

Application Note

An introduction to using the Touchpoint Pro PC Configuration Software



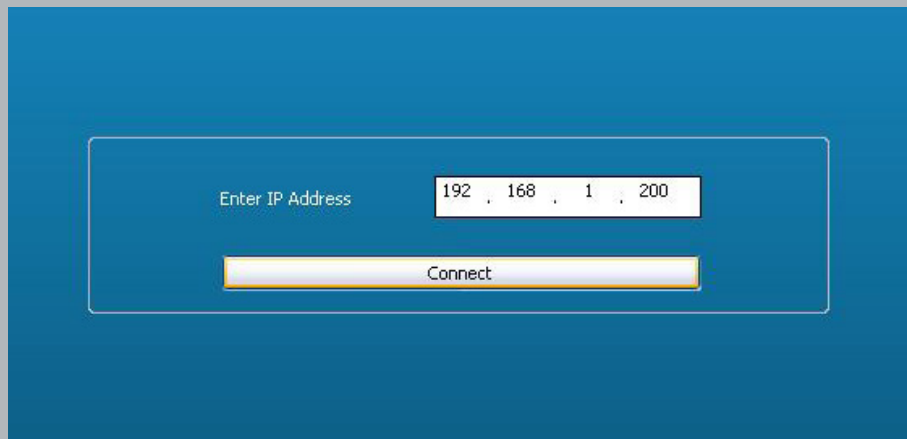
System configuration is simplified and time-effective with Touchpoint Pro' intelligent and flexible PC Configuration Software

Touchpoint Pro system channels can be configured by using the Touchpoint Pro' Controller's touch screen User Interface or the optional Touchpoint Pro PC Configuration Software.

The Touchpoint Pro PC Configuration Software is especially designed to simplify the configuration of individual channels and reduce the overall commissioning time for larger systems.

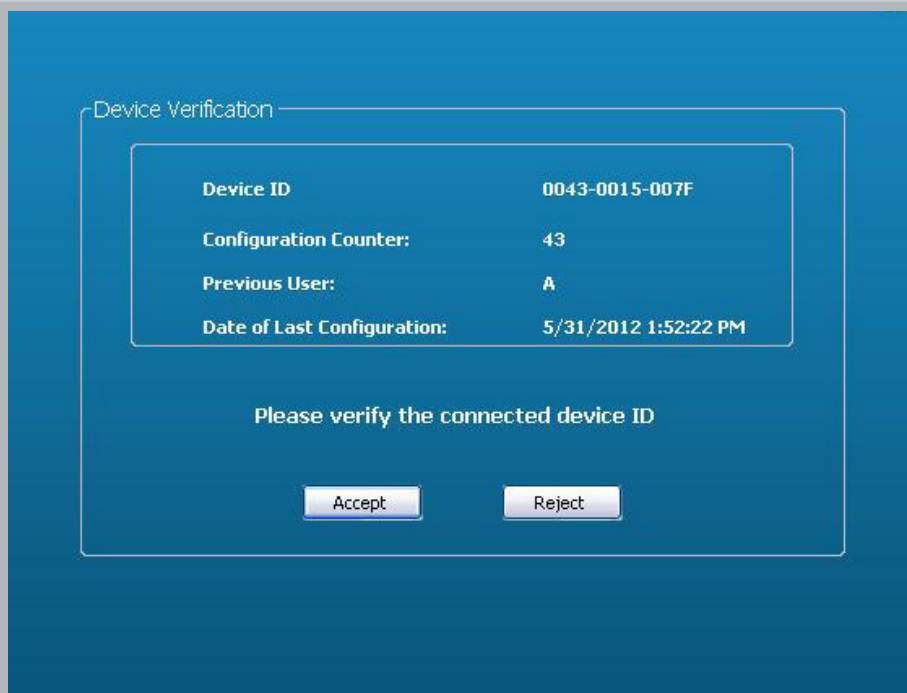
The PC Configuration Software is optimised for the larger screen of a PC monitor. Especially for configuration of larger systems, the PC provides better comfort and efficiency than using the touch screen. In the PC Configuration Software many of the configuration screens are combined, reducing the overall commissioning time of the channels.

Key configuration steps



1. IP Address and connection

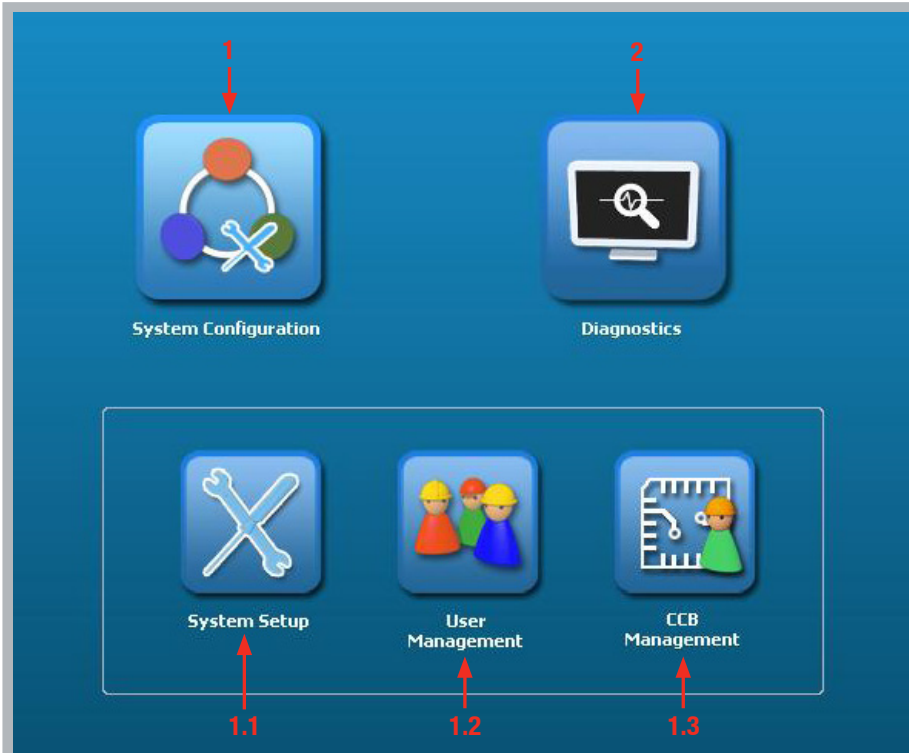
The IP address needs to be entered and confirmed with the **Connect** button. In the example screen shown, the IP address has been set to 192.168.1.200.



The **Device Verification Data Screen** will now be shown and the green tick shows that the connection status is OK. Press **Accept** and the **Tools Screen** will be shown.

Application Note

An introduction to using Touchpoint Pro PC Configuration Software continued...



2. Tools screen

The **Tools Screen** includes **System Configuration** (1) and **Diagnostics** (2).

2.1 How to configure a channel

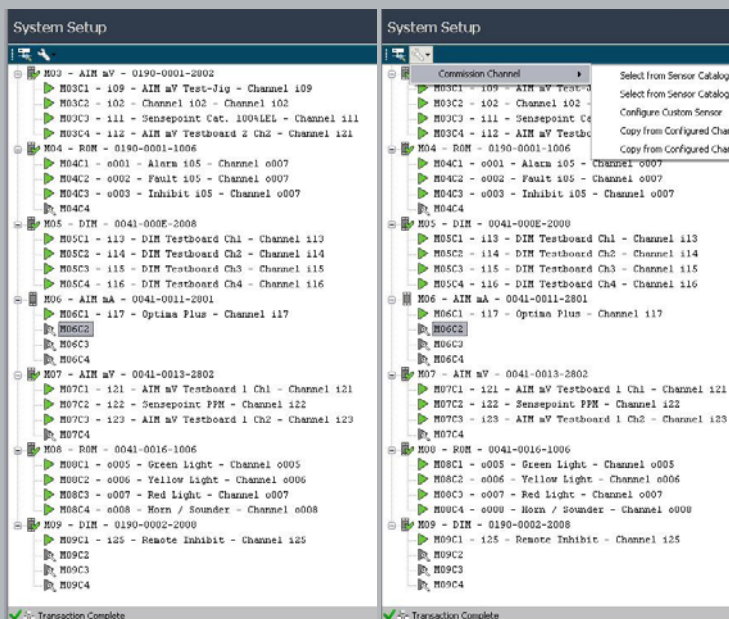
If you click the **System Configuration** button (1), the **System Setup** button (1.1), **User Management** button (1.2) and the **Control Centre Board (CCB) Management** button (1.3) will be displayed.

Next steps:

1. Click the **System Setup** button (1.1) to configure the channel.
2. A System Setup tree will be displayed.
3. Click on the **Channel** that you wish to configure and then click on the **Configure** button
4. A scroll down box will now open
5. Select the **Configuration** option

Individual channels can be configured in several ways:

- Using the built-in **Sensor Catalogue** (Analogue Input Modules only)
- By completing a full **Custom Configuration**
- By copying a previously configured channel



Application Note

An introduction to using Touchpoint Pro PC Configuration Software continued...



Module Type: AIM mA
 Module UDID: 0041 - 0011 - 2801

Channel ID
 Modified Value: i03
 Sent Value: i03

Channel Location Tag
 Modified Value: Gas House 25
 Sent Value: Gas House 25

Channel Custom ID
 Modified Value: Channel i03
 Sent Value: Channel i03

Buttons: Back, Send, **Accept**, Edit, Skip

2.2. Commissioning a channel using the Sensor Catalogue

When the Sensor Catalogue is used, only the Channel ID, the Channel Location Tag and the Channel Custom ID need to be programmed. The rest of the configuration is programmed automatically. This is the fastest and most efficient way to commission a channel. The steps involved in this process are detailed below:

1. Enter the Channel ID - use the default setting or select a parameter from the scroll down box
2. Enter the Channel Location Tag - use the default setting or change the parameter.
Up to 30 characters can be entered. *It is important to use a name that will help to identify the system location afterwards*
3. Enter the Channel Custom ID. *This parameter is only visible in the **Input Detail Screen** or in **Reports***
4. Click the **Send** button
5. Click the **Accept** button
6. Enter the Field Device Name. *All devices will be listed in the Sensor Catalogue scroll down box*


Field Device Name
 New Value: Sensepoint Toxic

Sensor Name
 New Value: CO,0-500ppm

Buttons: Back, Send, **Accept**, Edit, Skip

7. Enter the Sensor Name. *The scroll down box will list all available sensor names for the selected Field Device*
8. Click **Send** button
9. Click **Accept** button
10. A pop up will now show you that your configuration was successful. Click **OK**
11. The newly configured channel will now be shown in the **System Setup Tree**

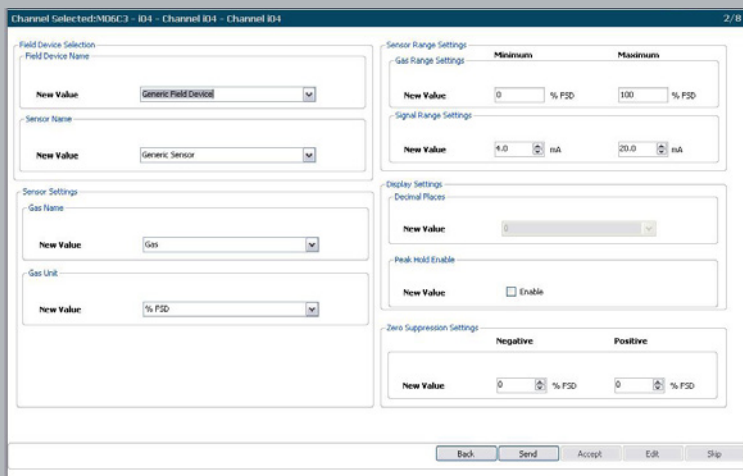
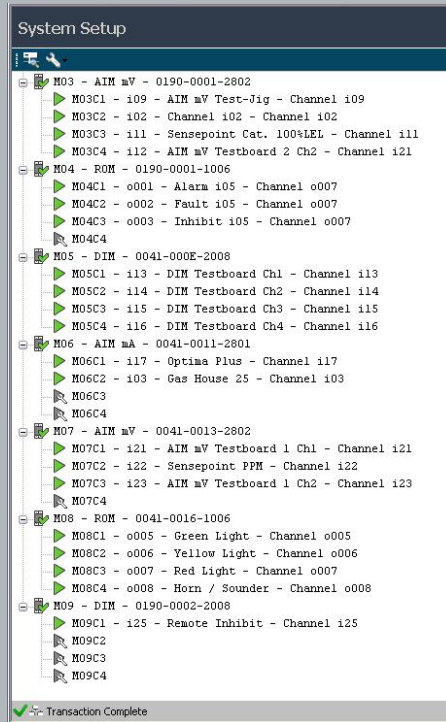
Please Note: Only the active buttons are highlighted.

 Configuration for Channel 'M06C2 - i03 - Gas House 25 - Channel i03' is successful, please proceed with calibration and/or testing.

OK

Application Note

An introduction to using Touchpoint Pro PC Configuration Software continued...



Example of one of the System Setup/Sensor and Display Setting screens

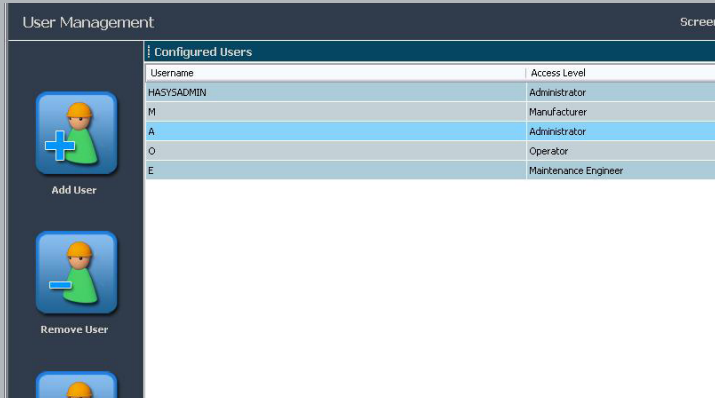
2.3 Commissioning a channel using the Custom Channel Configuration

This option enables the user to set parameters as required. The steps involved in this process are detailed below:

1. The first five steps are identical to those described in 2.1.
2. Now walk through the **Setting** screens and define the parameters as required
3. After each setting screen click the **Send** and **Accept** buttons
4. The **Back** button enables the user to go one step back and change parameters as desired
5. After setting all parameters click **OK** to confirm that the configuration was successful
6. The new configured channel will now be shown in the **System Setup Tree**

Application Note

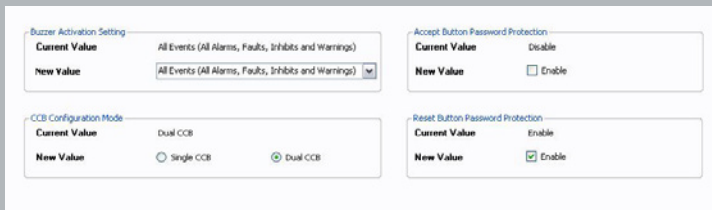
An introduction to using Touchpoint Pro PC Configuration Software continued...



Example of the User Management screen

2.4 User Management

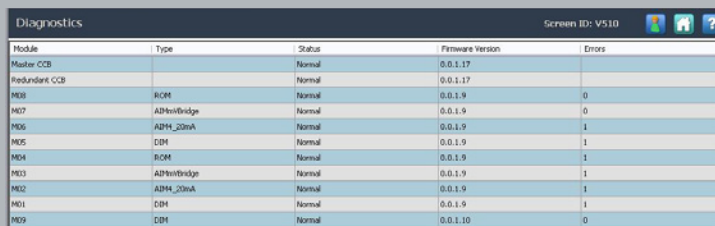
In the **User Management** section (1.2) the **Configured User** (User Name and Access Level) are displayed. This tool allows users to be added, removed and also passwords to be modified. Click the button as required.



Example of the CCB screen

2.5 CCB Management

The **CCB Management/CCB Configuration** section (1.3), allows access to buzzer activation settings, single or dual CCB modes and also password protection.



Example of the Diagnostic screen

3. Diagnostics

In the **Diagnostic** section the status, firmware version and number of errors in the configured Modules / Module types are displayed.

Honeywell Analytics Gas Detection



Honeywell Analytics is able to provide gas detection solutions to meet the requirements of all applications and industries. Contact us in the following ways:

Headquarters

Europe, Middle East, Africa

Life Safety Distribution AG
Javastrasse 2
8604 Hegnau
Switzerland
Tel: +41 (0)44 943 4300
Fax: +41 (0)44 943 4398
gasdetection@honeywell.com

Customer Service:

Tel: +800 333 222 44 (Freephone number)
Tel: +41 44 943 4380 (Alternative number)
Fax: +800 333 222 55
Middle East Tel: +971 4 450 5800 (Fixed Gas Detection)
Middle East Tel: +971 4 450 5852 (Portable Gas Detection)

Americas

Honeywell Analytics Distribution Inc.
405 Barclay Blvd.
Lincolnshire, IL 60069
USA
Tel: +1 847 955 8200
Toll free: +1 800 538 0363
Fax: +1 847 955 8210
detectgas@honeywell.com

Asia Pacific

Honeywell Analytics
Asia Pacific
#701 Kolon Science Valley (1)
43 Digital-Ro 34-Gil, Guro-Gu
Seoul 152-729
Korea
Tel: +82 (0) 2 6909 0300
Fax: +82 (0) 2 2025 0388
India Tel: +91 124 4752700
analytics.ap@honeywell.com

Technical Support Centres

Honeywell Analytics Ltd.
4 Stinsford Road
Nuffield Industrial Estate
Poole, Dorset, BH17 0RZ
United Kingdom
Tel: +44 (0) 1202 645 544
Fax: +44 (0) 1202 645 555

Honeywell Analytics
ZAC Athélia 4 - 375 avenue du Mistral
Bât B, Espace Mistral
13600 La Ciotat
France
Tel: +33 (0) 4 42 98 17 75
Fax: +33 (0) 4 42 71 97 05

Honeywell Analytics
Elsenheimerstrasse 43
80687 München
Germany
Tel: +49 89 791 92 20
Fax: +49 89 791 92 43

Honeywell Analytics
P.O. Box-45595
6th Street
Musaffah Industrial Area
Abu Dhabi
UAE
Tel: +971 2 554 6672
Fax: +971 2 554 6672

EMEA: HAexpert@honeywell.com
US: ha.us.service@honeywell.com
AP: ha.ap.service@honeywell.com

www.honeywellanalytics.com
www.raesystems.com

Honeywell Analytics
Experts in Gas Detection



Please Note:

While every effort has been made to ensure accuracy in this publication, no responsibility can be accepted for errors or omissions. Data may change, as well as legislation, and you are strongly advised to obtain copies of the most recently issued regulations, standards, and guidelines. This publication is not intended to form the basis of a contract.

13032_H_AppNote_TPPR PC Configuration Software
APN0086_V1_10-14_EMEA
© 2014 Honeywell Analytics

Honeywell