



# MILLER GLIDELOC VERTICAL RAIL SYSTEM

A New Generation of Guided-type Fall Arresters

---

Miller VR500 Fall Arrester

---

**Honeywell**  
**MILLER®**

# MILLER VR500 FALL ARRESTER

The latest generation of guided-type fall arresters provides greater safety and more comfortable climbing from improved design.

## Highest safety

- Quick arrest by allowing the catch nose to fully engage with mounting holes
- For inspection before use, there is a visual fall indicator to reveal whether the shock absorber has been deployed
- Locking pin prevents inserting the shuttle in the wrong direction

## Superior Comfort

- Optimized performance for smooth and uninterrupted sliding performance on all Miller GlideLoc systems
- Ergonomic, Compact and lightweight design for ease of handling
- Big and "easy-to-grip" carabiner for ease of opening and closing when wearing gloves
- Carabiner with swivel connection to allow freedom of movement and rotation in all directions

## Robust and durable

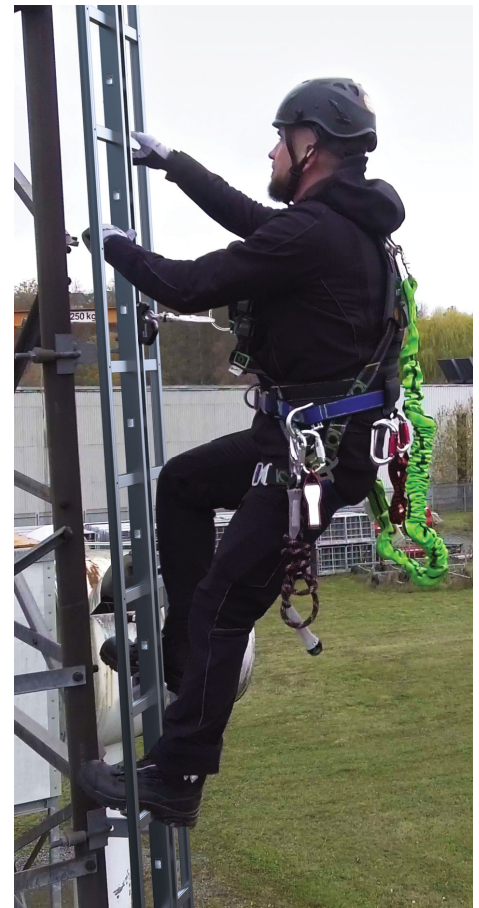
- Long lifetime with stainless steel shock absorber and internal parts together with high performance polymer wheels
- Housing fully covers the shock absorber to protect against accidental impact, extending the life of the fall arrester and reducing the need for maintenance
- Tri-lock carabiner to withstand up to 6744 lbs with the gate up to 3600 lbs

## Universally applicable

- Certified for workers weighing 88 lbs to 310 lbs
- Works with forward, backward and sideways inclined ladders and rails at angles up to 15°
- Tested for rails operating at temperatures ranging from -40°F to 122°F
- Certified according to OSHA 1910.29, ANSI 14.3 – 2008 and EN 353-1:2014+A1:2017

## AREAS OF USE

- Telecommunications
- Wind Turbines
- Utilities
- Industrial/Manufacturing Facilities
- Drilling Rigs/Platforms
- Shipbuilding
- Crane Installation
- Confined Spaces

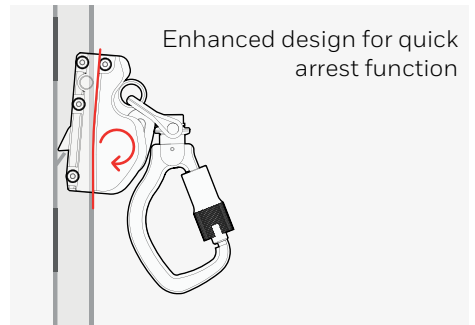
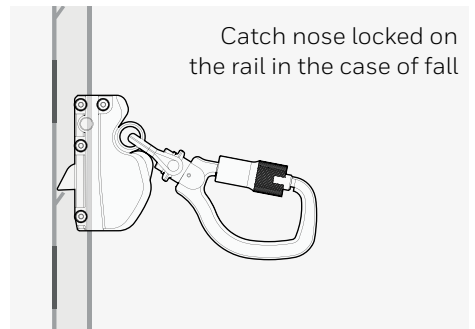
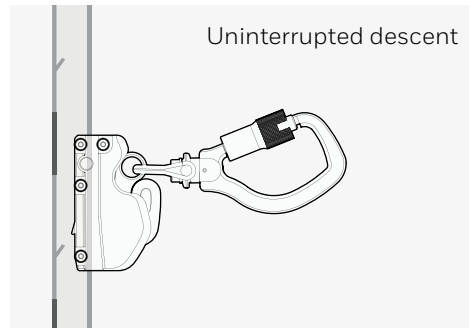
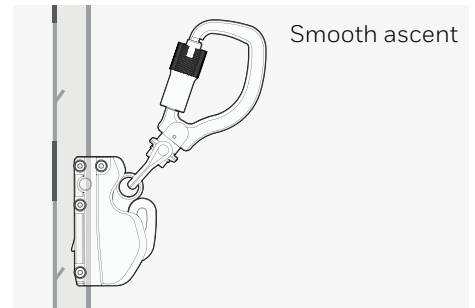


# MILLER VR500 PRODUCT FEATURES

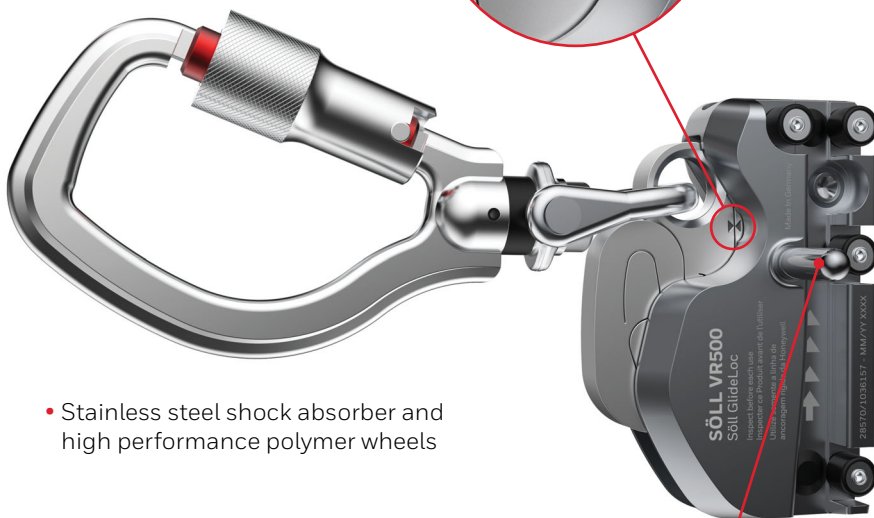
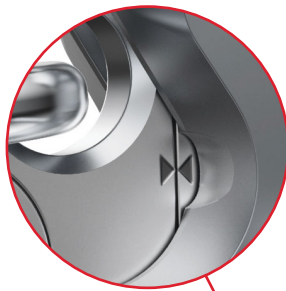
- Ergonomic, compact size, and lightweight for ease of handling
- Large tri-lock carabiner with swivel connection for ease of gripping when wearing gloves



<b>Weight:</b>	1.87 lbs
<b>Length:</b>	4.3 in
<b>Width:</b>	2.5 in
<b>Height:</b> (with carabiner)	3.0 in 9.3 in



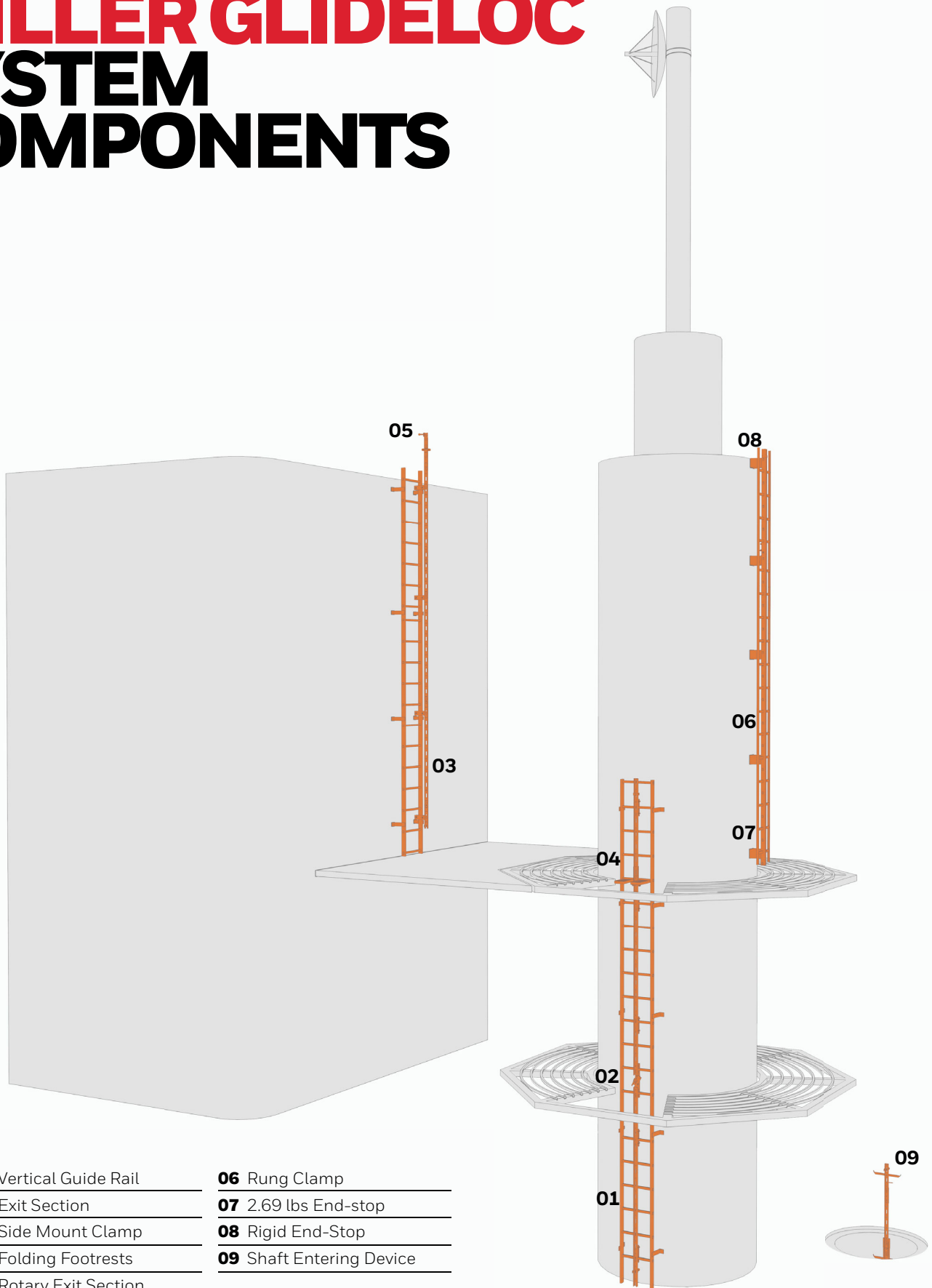
- Visual fall indicator for ease of inspection



- Stainless steel shock absorber and high performance polymer wheels

- Locking pin prevents incorrect insertion into the rail

# MILLER GLIDELOC SYSTEM COMPONENTS



# MILLER GLIDELoc SYSTEM COMPONENTS

14622  
Galvanized (Pictured)

15729  
Aluminium

16852  
Stainless Steel



## 01 - VERTICAL GUIDE RAIL

For applications where the rail needs to be assembled on existing ladders or step irons. Length of 10ft. 1in. (3.07m)

11317



## 02 - EXIT SECTION

Allows detaching and attaching the fall arrester from the rail.

19091



## 03 - SIDE MOUNT CLAMP

Enables mounting rail along the side of ladder. Galvanized steel construction.

23724



## 04 - FOLDING FOOTREST

Provides a rest platform that conveniently folds out of the way when not in use. Galvanized steel construction.

26087-H5



## 05 - ROTARY EXIT SECTION

Allows safe access to leave the top of the guide rail while standing on the upper platform.

10903



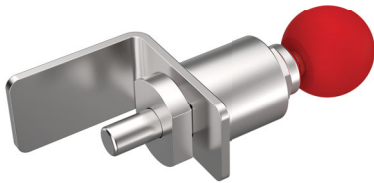
## 06 - RUNG CLAMP

Rung Clamp for diameters up to 1" (25.4mm). Galvanized steel construction.



# MILLER GLIDELoc SYSTEM COMPONENTS

26027



## 07 - END-STOP 2.69 LBS

For use on vertical rail applications. Allows for entering & exiting the system with GlideLoc fall arresters.

11634



## 08 - RIGID END-STOP

For use with vertical rail, prevents GlideLoc fall arresters from being removed from rail. Stainless steel construction.

17065



## 09 - SHAFT ENTERING DEVICE

Shaft Entering Device – allows safe entry of a shaft such as a manhole. The prongs slip into coupling device. Stainless steel construction.

50163730-001



## VR500 FALL ARRESTER

The latest generation of guided-type fall arresters that locks into the rail in the event of a fall. Stainless steel construction and aluminium housing.

25805-Z7/



## UNIVERSAL II FALL ARRESTER

Can be removed from the rail anywhere along the system enabling transfer onto platforms. Stainless steel construction.

# MILLER GLIDELOC SYSTEM KITS

Systems are available in easy-to-install kits or can be customized for your application with a range of additional components, including:

- Brackets for larger ladder rungs
- Brackets to attach to ladder side rails
- Foldable foot rests for long ladders
- Shaft entry device to provide easy access to manholes and roof hatches.

## GlideLoc Vertical Height Access Ladder System Kits

SKU	SKU	SKU	SYSTEM	SECTION OF	NUMBER OF LADDER
Galvanized	Aluminium	Stainless Steel	Length	10ft (3.0m) Rail	Attachment Brackets
GG0020	GA0020	GS0020	20ft. (6.1m)	2	2
GG0030	GA0030	GS0030	30 ft. (9.1m)	3	6
GG0040	GA0040	GS0040	40 ft. (12.2m)	4	7
GG0050	GA0050	GS0050	50 ft. (15.2m)	5	9
GG0060	GA0060	GS0060	60 ft. (18.3m)	6	10
GG0070	GA0070	GS0070	70 ft. (21.3m)	7	11
GG0080	GA0080	GS0080	80 ft. (24.4m)	8	13
GG0090	GA0090	GS0090	90 ft. (27.4m)	9	14
GG0100	GA0100	GS0100	100 ft. (30.5m)	10	16
GG0110	GA0110	GS0110	110 ft. (33.5m)	11	17
GG0120	GA0120	GS0120	120 ft. (36.6m)	12	19
GG0130	GA0130	GS0130	130 ft. (39.6m)	13	20
GG0140	GA0140	GS0140	140 ft. (42.7m)	14	21
GG0150	GA0150	GS0150	150 ft. (45.7m)	15	23
GG0160	GA0160	GS0160 </td <td>160 ft. (48.8m)</td> <td>16</td> <td>24</td>	160 ft. (48.8m)	16	24
GG0170	GA0170	GS0170	170 ft. (51.8m)	17	26
GG0180	GA0180	GS0180	180 ft. (54.9m)	18	27
GG0190	GA0190	GS0190	190 ft. (58.0m)	19	29
GG0200	GA0200	GS0200	200 ft. (61.0m)	20	30

\*Minimum four (4) rung clamps required for each system



TO WATCH THE  
VR500 PRODUCT VIDEO



## **CUSTOMER SERVICE CONTACT**

### **Americas**

Technical Service:

Tel: 800.873.5242

E-mail: [hsptechsupport@honeywell.com](mailto:hsptechsupport@honeywell.com)

### **Honeywell Personal Protective Equipment**

300 South Tryon Street  
Charlotte, NC 28202

US Customer Service

Tel. 800.430.5490

Fax. 800.322.1330

Canada Customer Service

Tel. 888.212.7233

Fax. 888.667.8477

[www.safety.honeywell.com](http://www.safety.honeywell.com)

HIS-FALL-VR500-BRO-NA-V2 | 12/20  
© 2020 Honeywell International Inc.

**Honeywell**  
**MILLER®**