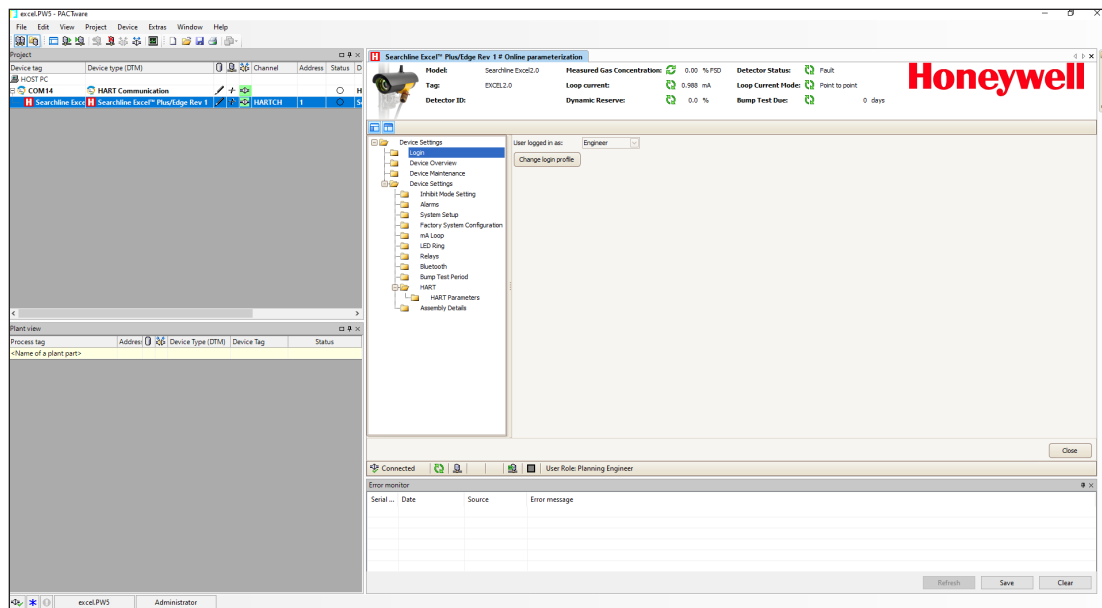


USER MANUAL

DEVICE TYPE MANAGER (DTM)

SEARCHLINE EXCEL™ PLUS
SEARCHLINE EXCEL™ EDGE



CONTENTS

CONTENTS.....	2
1 Introduction.....	3
2 Software Installation.....	4
2.1 Required software / software components.....	4
2.2 Downloads.....	4
2.2.1 PACTware.....	4
2.2.2 HART Communication DTM.....	4
2.2.3 Honeywell Analytics HART DTM Library.....	4
2.2.4 HART modem or multiplexer driver.....	4
2.3 System requirements.....	5
2.3.1 System resources.....	5
2.3.2 Operating systems.....	5
2.3.3 Hard disk space.....	5
2.4 Installing DTM setup.....	5
2.5 Installing Honeywell Analytics HART DTM Library.....	5
3 Operation.....	7
3.1 Establish connection with the device.....	7
3.2 Changing parameters.....	12
3.3 Switching to INHIBIT mode.....	13
3.4 Viewing Event History.....	14
3.5 Setting Gas Reading Units.....	15
3.6 Saving the Project.....	15

1 Introduction

The purpose of this document is to support the plant operators with commissioning, operation, configuration and diagnosis of the Searchline Excel Plus & Edge detector. The Searchline Excel Plus & Edge is an Open-Path Flammable Hydrocarbon Gas Detector (OPFHGD) certified for use in potentially explosive atmospheres. The advanced optical element design provides additional resistance to certain adverse effects of the operating environment, ensuring that your plant is compliant, your personnel are protected and your production process can deliver maximum uptime.

The Searchline Excel Plus & Edge device can be configured and operated by a Device Type Manager (DTM) that provides an easy-to-use user interface for accessing device variables, configuration parameters and diagnostic information.

The Searchline Excel Plus & Edge DTM offers the combination of FDT and EDDL technologies and a uniform user interface according to the FDT style guide. It is a full-featured DTM device that carries the standard EDD-Interpreter components to execute the EDD during runtime. Because it is using existing device descriptions, plant operators will experience a familiar operating concept in the DTM.

WARNING

For safety reasons this equipment must be operated by qualified personnel only. Read and understand the instruction manual completely before operating or servicing the equipment. For information regarding the Searchline Excel Plus & Edge device, check the Searchline Excel Plus & Edge Technical Manual.

Every effort has been made to ensure the accuracy of this document, however, Honeywell Analytics can assume no responsibility for any errors or omissions in this document or their consequences.

Honeywell Analytics would greatly appreciate being informed of any errors or omissions that may be found in the content of this document.

For information not covered in this document, or if there is a requirement to send comments/corrections about this document, contact Honeywell Analytics using the contact details given on the back page.

Honeywell Analytics reserve the right to change or revise the information supplied in this document without notice and without obligation to notify any person or organization of such revision or change. If information is required that does not appear in this document, contact the local distributor/agent or Honeywell Analytics.

2 Software Installation

2.1 Required software / software components

In order to be able to use the Searchline Excel Plus & Edge HART DTM and to go online with the device user needs the following components:

- FDT Frame application (PACTware or some other FDT application supporting FDT 1.2.x)
- HART Communication DTM (it represents the communication means needed for connecting the field devices to the automation software). There are multiple options available for download on the Internet.
- Honeywell Analytics HART DTM Library
- Microsoft .NET Framework (.NET 2.0)
- HART modem (RS232 or USB interfaces of the companies Endress+Hauser, Microflex or MACTek) or HART multiplexer

This user manual describes the case of using PACTware as FDT frame application and HART Communication DTM. Screen images captured from FDT frame application are of PACTware 5.0.

2.2 Downloads

2.2.1 PACTware

- Go to <http://www.pactware.com>, select English language
- Select Service > Download Area
- Select a free-of-charge PACTware download link
- Follow the link and download PACTware 5.X

2.2.2 HART Communication DTM

- Search on the Internet for an appropriate version of the software.

2.2.3 Honeywell Analytics HART DTM Library

- Go to the Honeywell Analytics website www.sps.honeywell.com
- Search for Searchline Excel Plus or Searchline Excel Edge and select as appropriate
- Scroll to the Software section, download Searchline Excel Plus & Edge™ DTM Toolkit

2.2.4 HART modem or multiplexer driver

- User needs HART modem driver
- User needs HART multiplexer DTM library
- Contact the manufacturer to get the driver or DTM library

2.3 System requirements

2.3.1 System resources

Proper execution of the DTMs requires a standard PC with at least following system resources:

- 1 GHz or faster 32-bit (x86) or 64-bit (x64) processor with at least 2 cores
- 1 GB RAM (32-bit) or 2 GB RAM (64-bit)
- Screen Resolution at least 1024x768 pixels

2.3.2 Operating systems

The DTM has been released under the following operating systems:

- Windows 10 (19-03)

2.3.3 Hard disk space

The Honeywell Analytics DTM Library HART requires approx. 50 MB hard disk space.

2.4 Installing DTM setup

1. Install the Frame Application PACTware (see §2.2.1)
2. Install the HART Communication DTM (see §2.2.2)

2.5 Installing Honeywell Analytics HART DTM Library

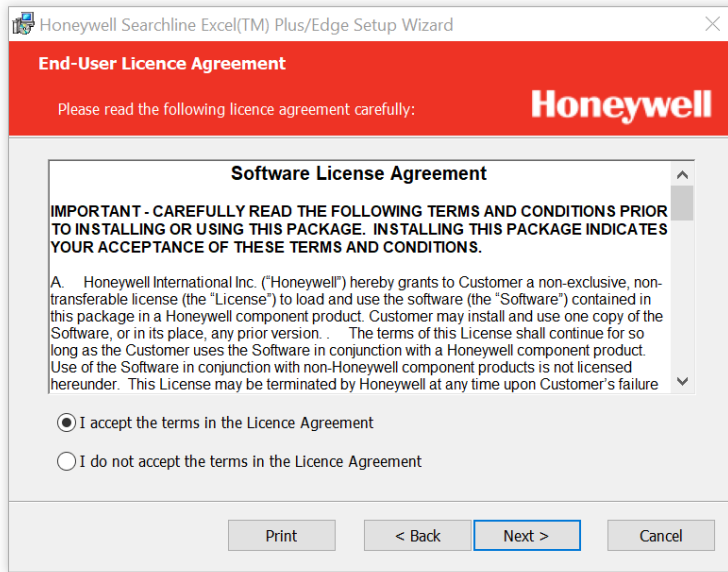
1. Launch **Setup.exe**.

Structure and files similar to the following example shall appear:

[Bootstrap]	<DIR>	16.08.2021
0009_1	mst	647 168 16.08.2021
Disk1	cab	33 333 16.08.2021
Disk10	cab	516 734 16.08.2021
Disk2	cab	8 300 256 16.08.2021
Disk3	cab	4 724 759 16.08.2021
Disk4	cab	1 687 915 16.08.2021
Disk5	cab	7 918 726 16.08.2021
Disk6	cab	2 580 717 16.08.2021
Disk7	cab	90 424 16.08.2021
Disk8	cab	721 108 16.08.2021
Disk9	cab	1 870 047 16.08.2021
Setup	exe	217 088 16.08.2021
Setup	msi	911 872 16.08.2021

2. On the Welcome Screen, click **Next**.

3. **Accept** the License Agreement and click **Next**:



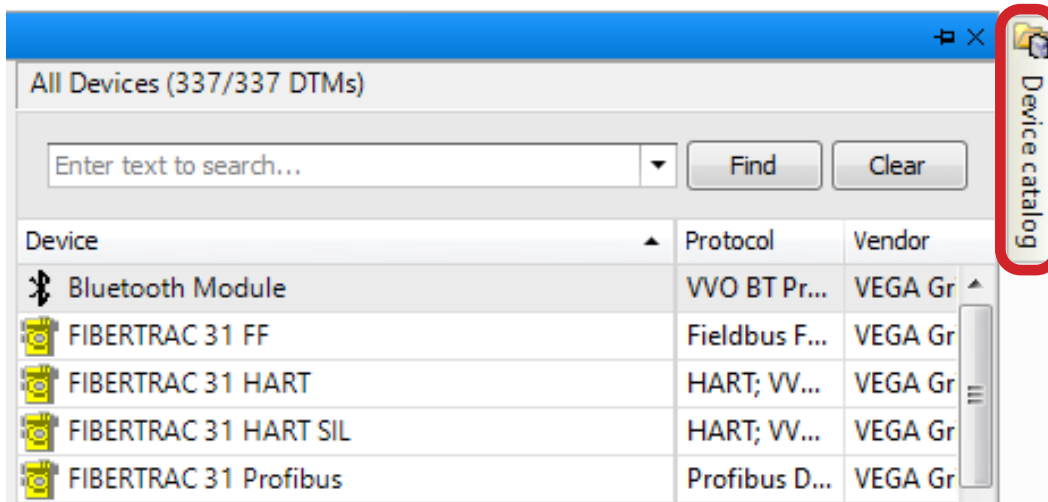
4. Adjust the installation path by clicking **Browse**.
5. Click on **Install**.
6. After the Setup Wizard finishes the installation, click on **Finish**.

3 Operation

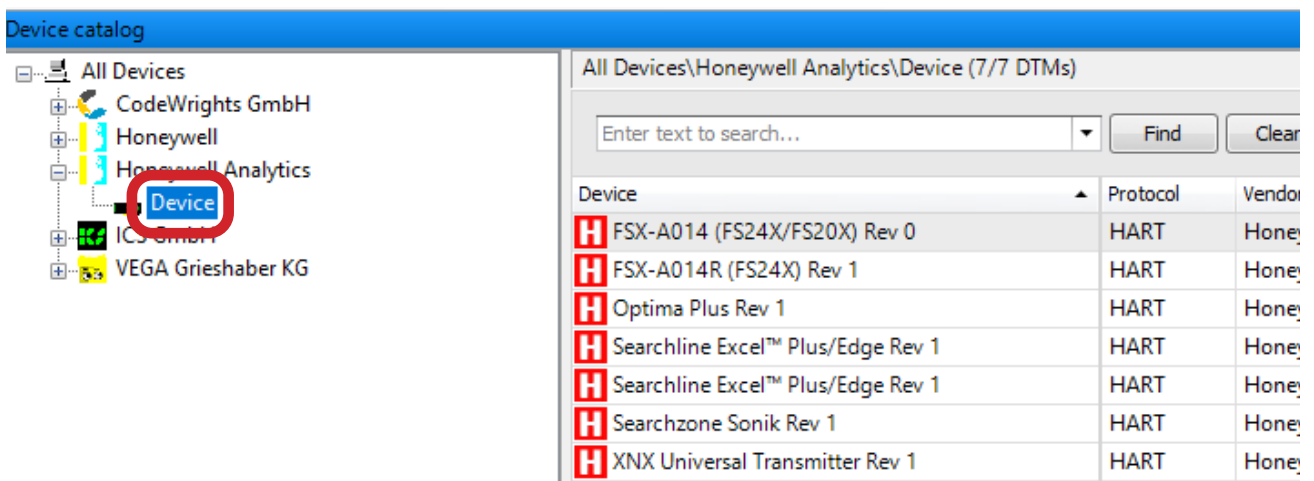
3.1 Establish connection with the device

For the electrical cabling and connections, refer to the Searchline Excel Plus & Edge Technical Manual. In order to use other HART interfaces such as HART Multiplexer, refer to the relevant manufacturer's manual. Follow the steps below for establishing the connection with the device using a serial HART modem and HART Communication DTM:

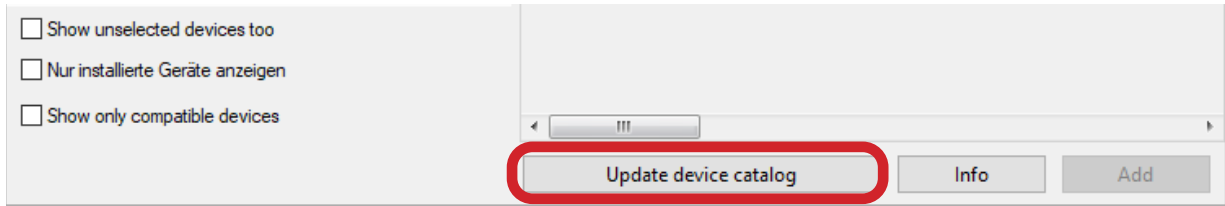
1. Connect the device and the serial HART modem as described in the Searchline Excel Plus & Edge Technical Manual (download at <https://sps.honeywell.com/us/en/products/safety/gas-and-flame-detection/industrial-fixed/searchline-excel-plus>).
2. Connect the modem connector to the PC COM port (serial modem) or USB port (USB Modem).
3. Open the PACTware frame application.
4. On the right side of the screen, click on **Device Catalog**.



5. Select **All Devices > Device**

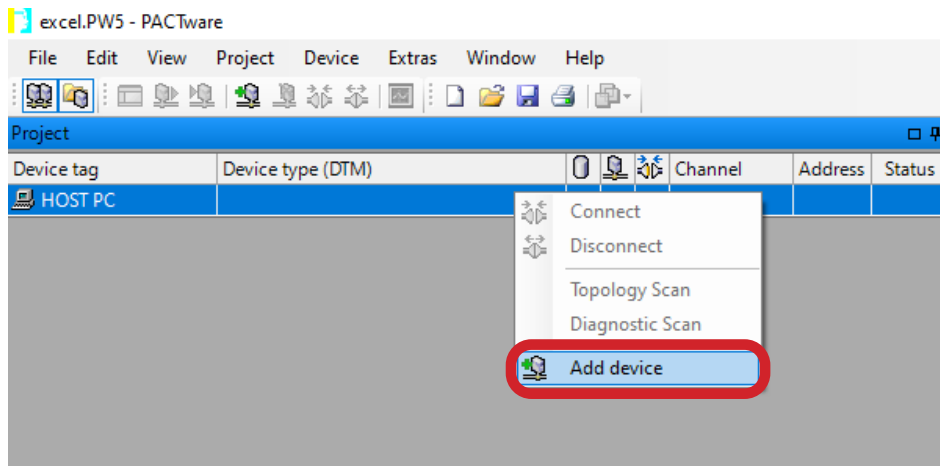


6. Select **Update device catalog**.



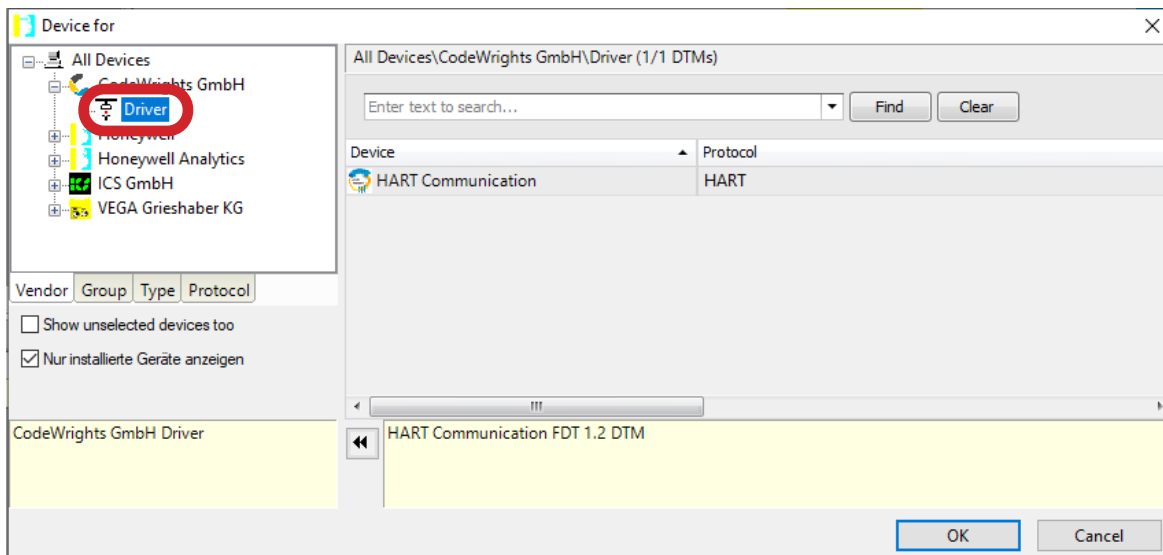
7. Right-click on **HOST PC**.

8. Select **Add device**.



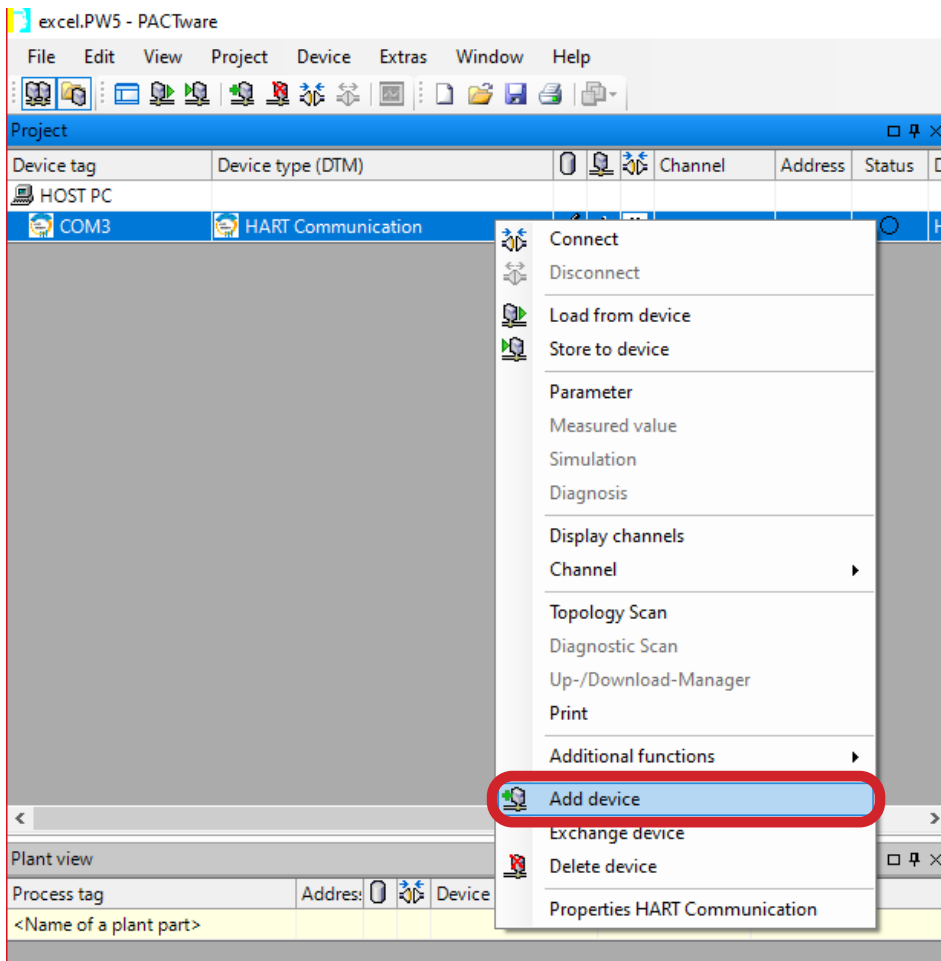
9. Select **Code Wrights GmbH > Driver**.

10. Click on **OK**.



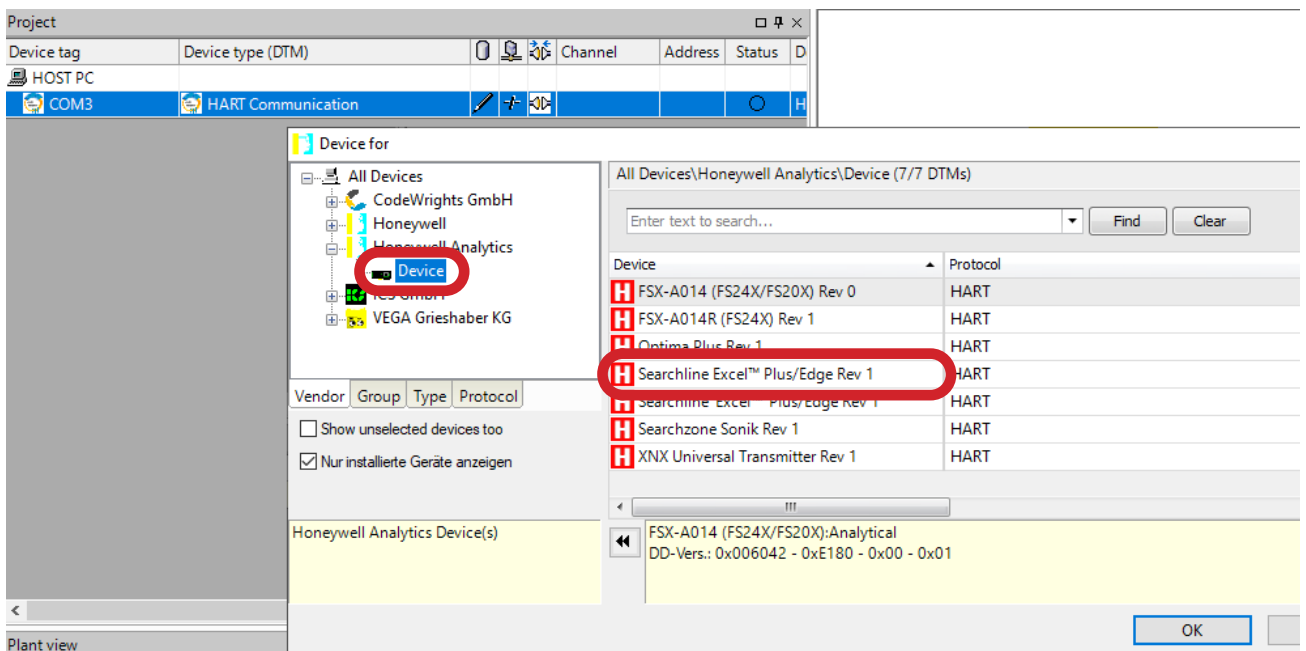
11. Right-click on **COM3 HART Communication**.

12. Select **Add device**.

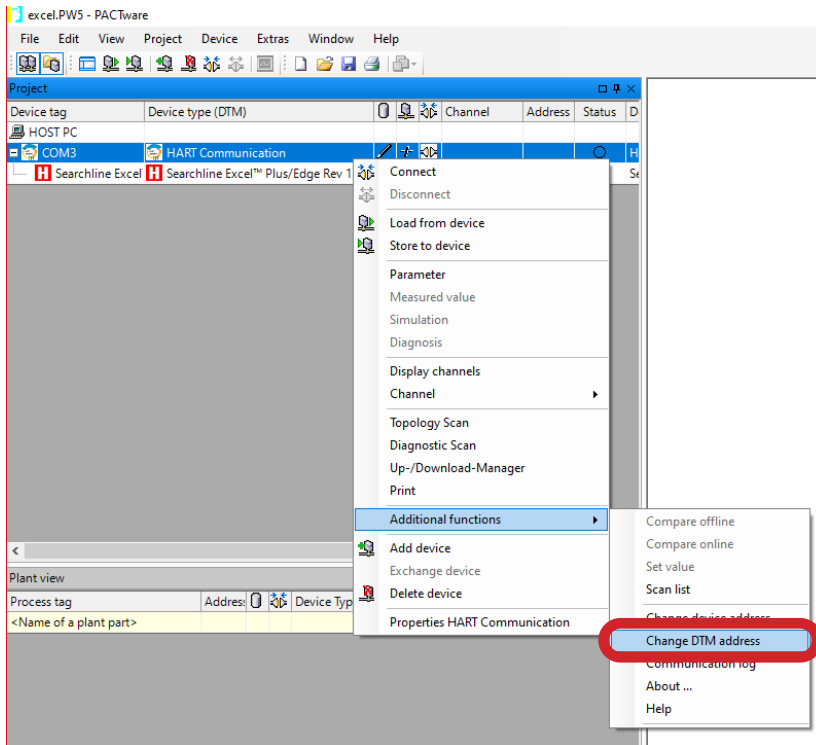


13. Select **Honeywell Analytics > Device**.

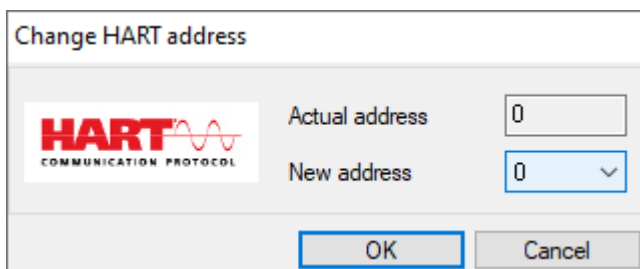
14. Select Searchline Excel.



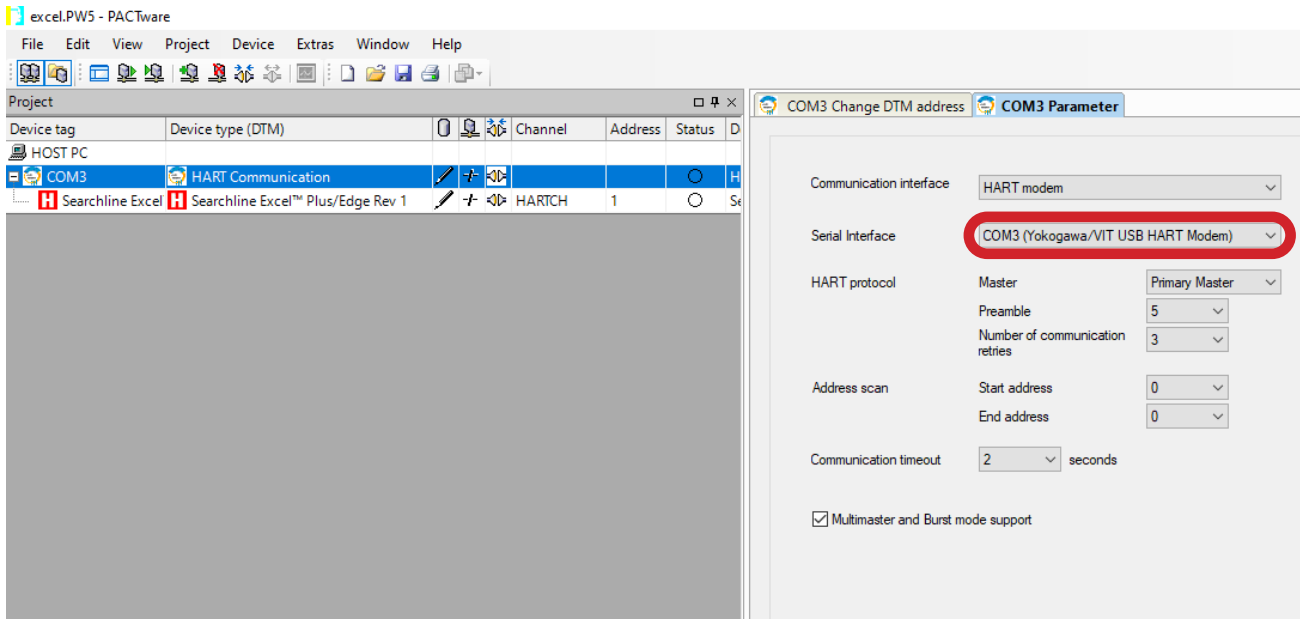
15. Right-click on **COM3 HART Communication**
16. Select **Additional functions**.
17. Select **Change DTM address**.



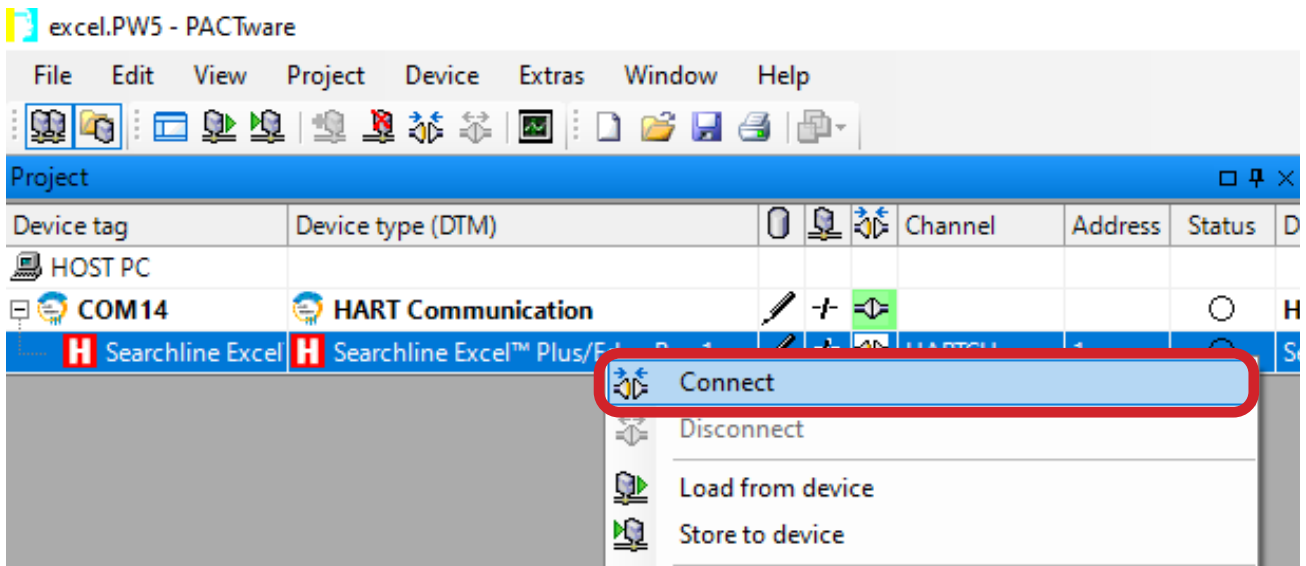
18. Set up the **New address** as needed and confirm.



19. Click on **COM 3 HART Communication**.
20. Select the **COM3 Parameter** tab.
21. Adjust **Serial Interface** as needed.

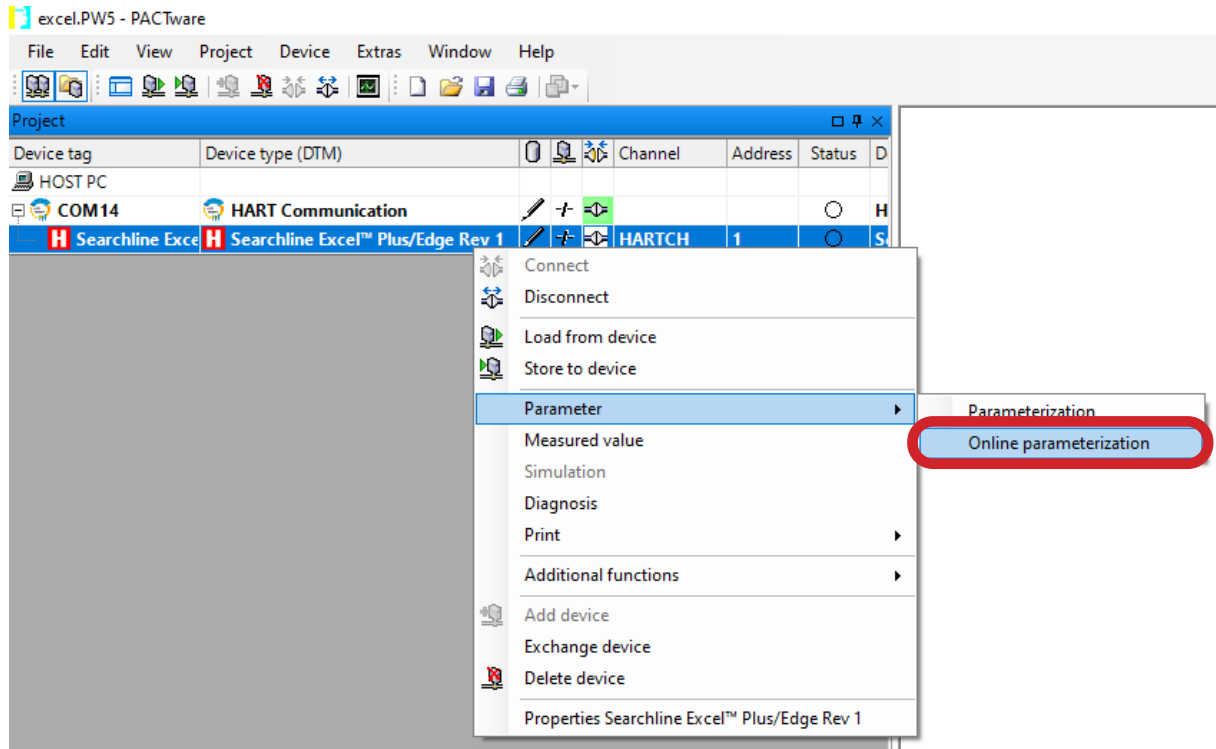


22. Right-click on **Searchline Excel™ Plus/Edge**.
23. Select **Connect**.

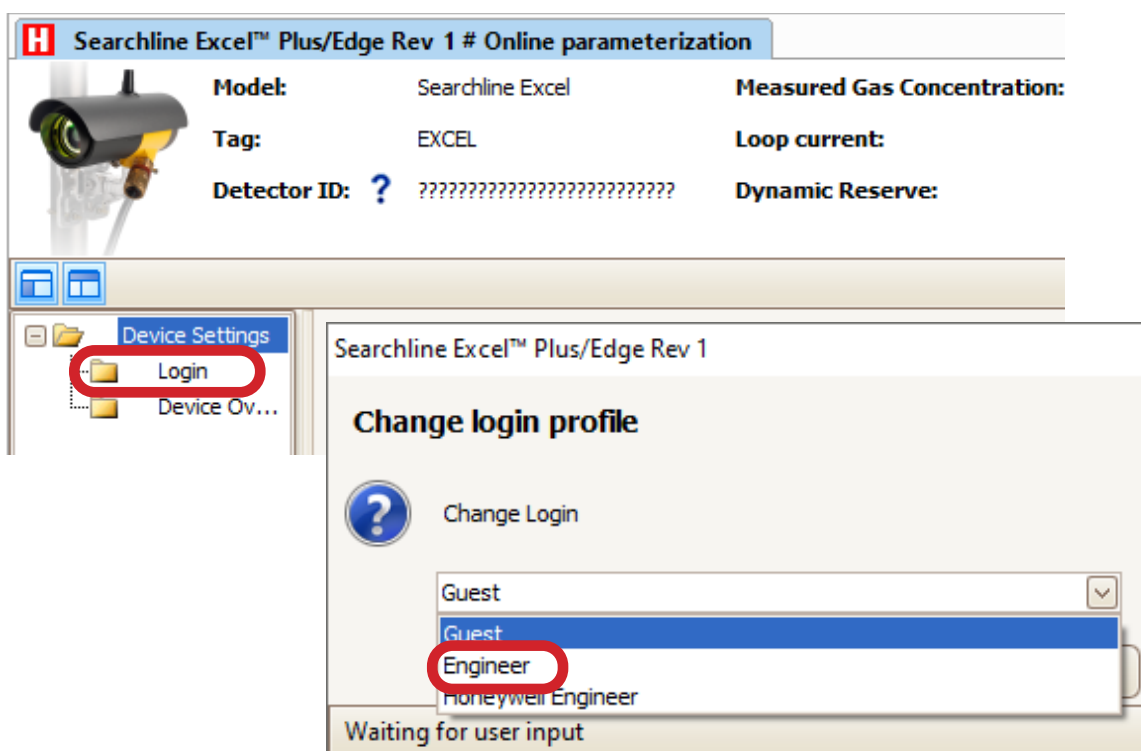


3.2 Changing parameters

1. Right-click on Searchline Excel™ Plus/Edge.
2. Select **Parameter**.
3. Select **Online parameterization**.



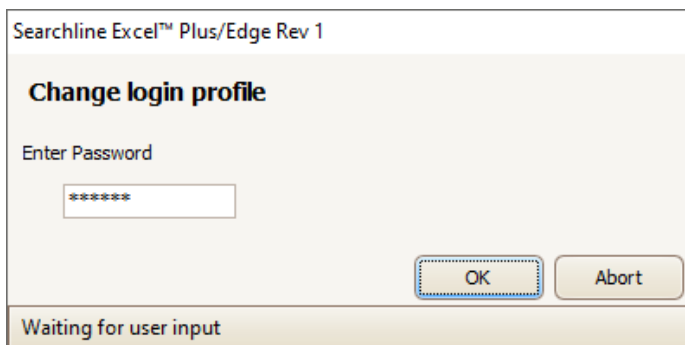
4. Select **Login**.
5. Change login profile to **Engineer**.



CAUTION

For product and data security, it is important that the password for 'Engineer' profile access is changed from the default setting. The password is 8 digit alphanumeric (case sensitive). A full 8 digit password should be used.

6. Change **Password**. (set to eight zeroes by default):

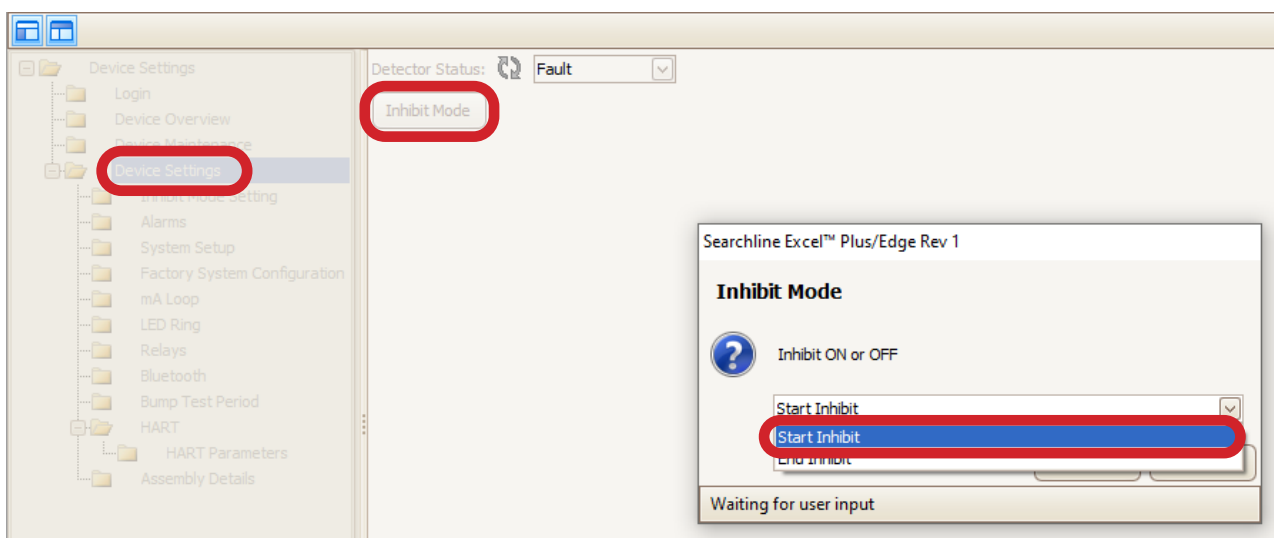


3.3 Switching to INHIBIT mode

CAUTION

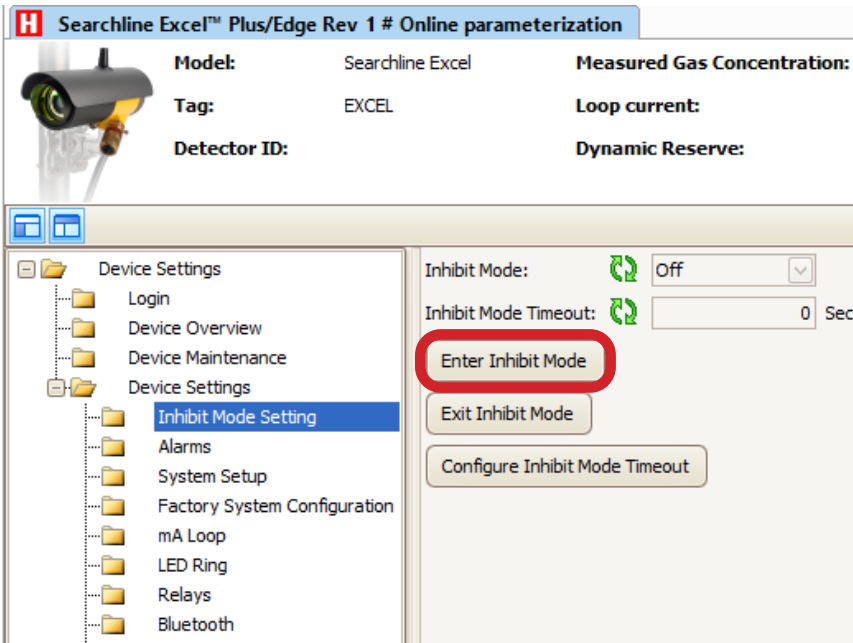
Switch the detector to INHIBIT MODE before adjusting parameters or performing maintenance.

1. Select **Device Settings**.
2. Select **Inhibit Mode**.
3. Select **Start Inhibit**.



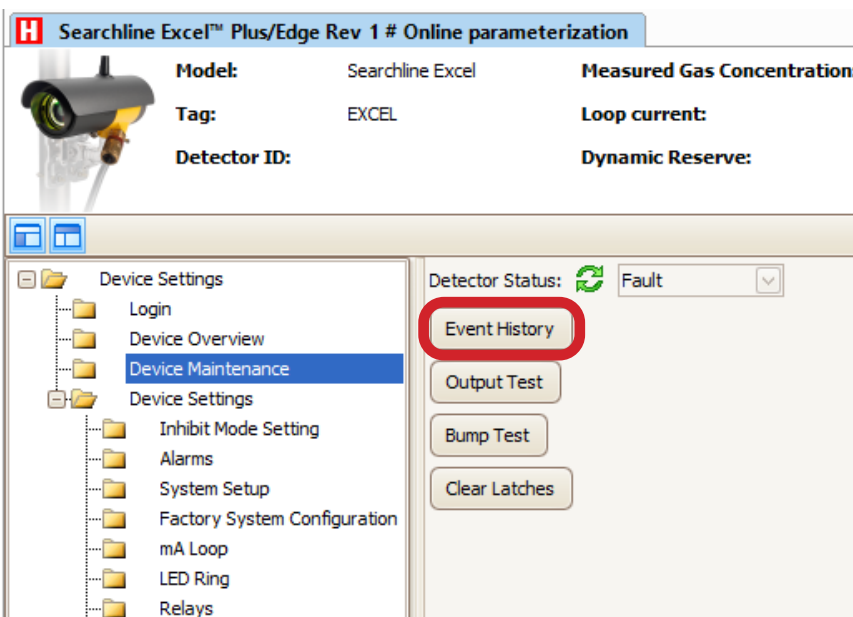
ALTERNATIVELY:

4. Select **Device Settings**.
5. Select **Inhibit Mode Setting**.
6. Select **Enter Inhibit Mode**.

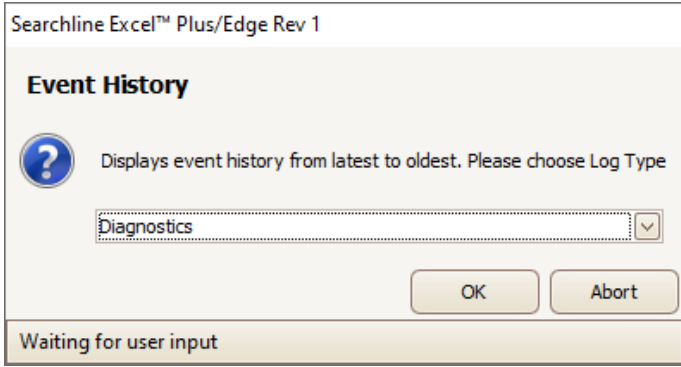


3.4 Viewing Event History

1. Select **Device Settings**.
2. Select **Device Maintenance**.
3. Select **Event History**.



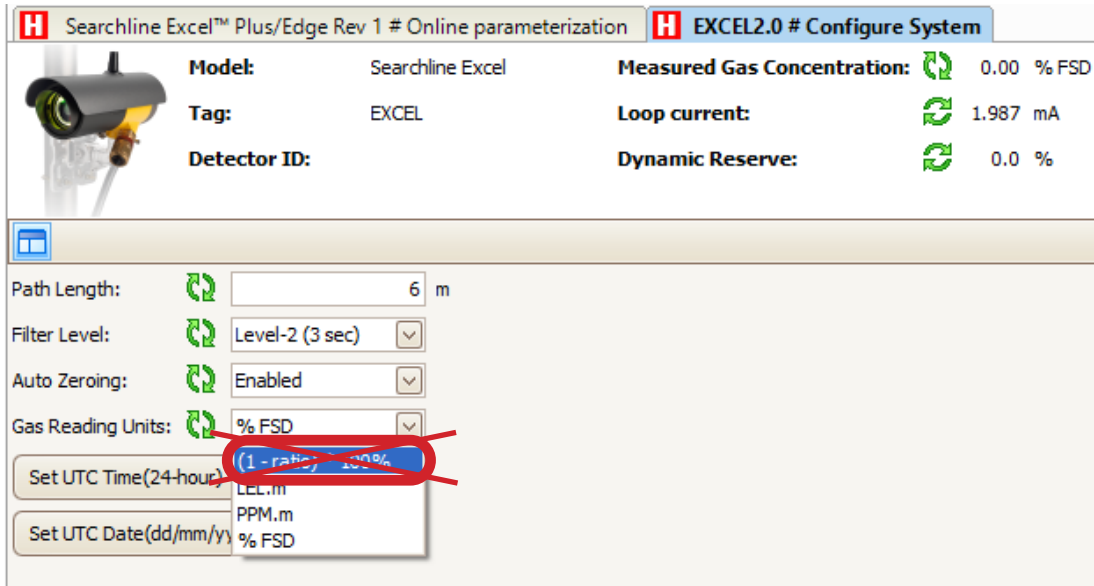
4. Select the **Log Type**.



3.5 Setting Gas Reading Units

CAUTION

Do NOT use the “(1-ratio)*100%” option.



3.6 Saving the Project

1. Click on **SAVE** button in the bottom right corner of the screen.

Find out more

www.sps.honeywell.com

Contact Honeywell Analytics:

Europe, Middle East, Africa

Life Safety Distribution GmbH

Tel: 00800 333 222 44 (Freephone no.)

Tel: +41 (0)44 943 4380 (Alternative no.)

Middle East Tel: +971 4 450 5800 (Fixed Gas Detection)

Middle East Tel: +971 4 450 5852 (Portable Gas Detection)

gasdetection@honeywell.com

Americas

Honeywell Analytics Inc.

Tel: +1 847 955 8200

Toll free: +1 800 538 0363

detectgas@honeywell.com

Asia Pacific

Honeywell Analytics Asia Pacific Co Ltd

Tel: +82 (0) 2 6909 0300

India Tel: +91 124 4752700

China Tel: +86 10 5885 8788-3000

analytics.ap@honeywell.com

Technical Services

EMEA: HAexpert@honeywell.com

US: ha.us.service@honeywell.com

AP: ha.ap.service@honeywell.com

www.sps.honeywell.com

Honeywell

Please Note:

While every effort has been made to ensure accuracy in this publication, no responsibility can be accepted for errors or omissions. Data may change, as well as legislation and you are strongly advised to obtain copies of the most recently issued regulations, standards and guidelines. This publication is not intended to form the basis of a contract.

08/2021

2017M1264 Issue 1 EN

© 2021 Honeywell Analytics