



**Honeywell**  
**MILLER**

**Miller DuraHoist™**  
Portable Safety Systems

## Miller DuraHoist Portable Confined Space System

Complete Four-Piece Hoist/Winch System .....	3
Adjustable Mast Options .....	4
Portable & Fixed Base Options .....	5
Vehicle Hitch Mounts .....	6
Winch & Hoist Mounting Brackets .....	7
Accessories .....	8

## Miller DuraHoist Portable Fall Arrest Post & Accessories

Portable Fall Arrest Post & Extension Post .....	8
Rescue/Material Handling Davit Arm .....	9
Miller TechLine™ Temporary Horizontal Lifeline Kits .....	9
Anchor Base & Anchor Plates .....	10
Winch & Hoist Mounting Brackets .....	11
Accessories .....	11

## Hoists/Winches

Miller ManHandler® Hoists .....	11
Miller MightEvac® Self-Retracting Lifelines (SRL) with Emergency Retrieval Hoist .....	12





## MILLER DURAHOIST PORTABLE CONFINED SPACE SYSTEM

### Complete Four-Piece Hoist / Winch System

Designed for manhole and confined space entry/retrieval and fall arrest applications. The modular design allows the use of components in various configurations and applications. Multiple winches and/or lifeline systems may be mounted as required. Lightweight, manageable components for easy storage, transport and set-up. No tools required for assembly.

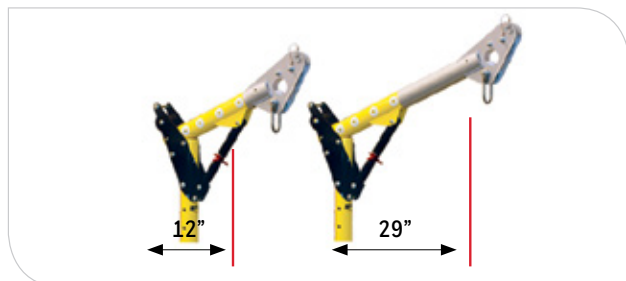
- Designed for manhole and confined space entry /retrieval and fall arrest applications
- System breaks down into four lightweight aluminum components for easy storage, transport and set-up. No tools required for assembly
- Modular design allows the use of various fixed and portable bases and an optional mast with extensions. Multiple winches and/or lifeline systems may be mounted as required

#### Suggested Applications:

- Public Utilities: Vault and manhole entry, pump/lift/valve stations, water treatment and wastewater industries
- General Industry (Food, Chemical, Pulp & Paper): Elevated manholes, storage tanks, platforms/mezzanines, underground vaults, clarifier tanks, pre-heaters

SKU	Description
DH-1/	Four-piece system with ManHandler hoist/winch w/65-ft. (20m) of 3/16-in. (4.76mm) galvanized steel cable
DH-2/	Four-piece system without ManHandler hoist/winch

Overall system height adjusts from 79-in. (2.01 m) to 100-in. (2.54m) Mast offset adjusts from 12-in. (0.30 m) to 29-in. (0.74 m)



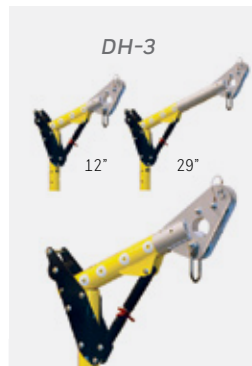
Four-piece system with ManHandler hoist/winch DH-1

## Adjustable Mast Options

- Designed for manhole and confined space entry/retrieval and fall arrest applications
- System breaks down into four lightweight aluminum components for easy storage, transport and set-up. No tools required for assembly.
- Modular design allows the use of various fixed and portable bases and an optional mast with extensions. Multiple winches and/or lifeline systems may be mounted as required.

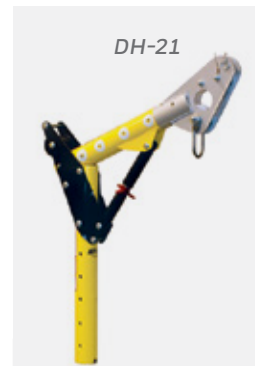
### Suggested Applications:

- Public Utilities: Vault and manhole entry, pump/lift/valve stations, water treatment and wastewater industries
- General Industry (Food, Chemical, Pulp & Paper): Elevated manholes, storage tanks, platforms/mezzanines, underground vaults, clarifier tanks, pre-heaters



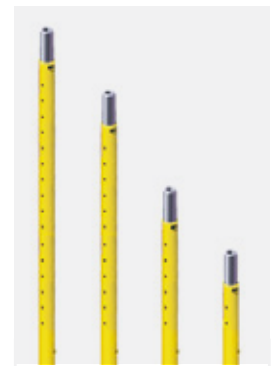
#### One-Piece Adjustable Mast

- Overall mast height adjusts from 74-in. (1.88m) to 89-in. (2.26m)
- Mast offset adjusts from 12-in. (0.30m) to 29-in. (0.74m)
- Compatible with any one Lower Mast Extension



#### Two-Piece Adjustable Mast

- Mast offset adjusts from 12-in. (0.30m) to 29-in. (0.74m)
- Compatible with any two Lower Mast Extensions, not exceeding a combined 90-in. (2.29m) in height for the DH-21/ or 78-in. (1.98 m) for the DH-23



#### Lower Mast Extensions

Extensions provide the flexibility to change overall mast height from 41-in. (1.04m) to 146-in. (3.71m)

- 57-in. (1.45m) Lower Mast Extension DH-22/57
- 45-in. (1.14m) Lower Mast Extension DH-22/45
- 33-in. (0.84m) Lower Mast Extension DH-22/33
- 21-in. (0.53m) Lower Mast Extension DH-22/21



SKU	DESCRIPTION	WEIGHT
DH-3	One-Piece Adjustable Mast	29 lbs. (13.2 kg)
DH-21	Upper Mast	23 lbs. (10.4 kg)
DH-23	30-in. (.76 m) to 48-in. (1.22 m) Adjustable Offset Upper Mast	29 lbs. (13.2 kg)
DH-22/21	21-in. (.53 m) Lower Mast Extension	14 lbs. (6.4 kg)
DH-22/33	33-in. (.84 m) Lower Mast Extension	17 lbs. (7.7 kg)
DH-22/45	45-in. (1.14 m) Lower Mast Extension	20 lbs. (9.1 kg)
DH-22/57	57-in. (1.45 m) Lower Mast Extension	23 lbs. (10.4 kg)

## Portable & Fixed Base Options

All of the following bases are compatible with all Adjustable Mast Options.  
All base options include PVC liner.



### Floor Mount Sleeve DH-7ZP & DH-7SS

Mounts to horizontal concrete or steel structures.



### Barrel Mount Sleeve w/3.5-in. (.09m) opening DH-5

Eight independent clamping screws allow temporary installations over edges of shoring cans, walls and other structures.



### Three-Piece Portable Base

Three lightweight aluminum components for easy transport. Features adjustable aluminum screws and a built-in level indicator for easy set-up on uneven surfaces. No tools required for assembly.

- DH-4/ – Maximum 29-in. (.74 m) offset
- DH-24 – Maximum 48-in. (1.22 m) offset



### Adjustable Barrel Mount Sleeve DH-6

Designed for shoring, wall and parapet applications where frequent set-up over varying wall thicknesses is required.

Accommodates wall thicknesses up to a max. of 24-in. (0.61 m).



### Wall Mount Sleeve DH-8ZP/ & DH-8SS/ DH-6

Designed for shoring, wall and parapet applications where frequent set-up over varying wall thicknesses is required.

Accommodates wall thicknesses up to a max. of 24-in. (0.61m).



### Flush Floor Mount Sleeve DH-20ZP/ & DH-20SS

Eliminates the potential trip hazard presented by other floor mount sleeves. Installs into a 4-in. (0.10m) diameter core hole in concrete or in an existing steel structure.



### Core Mount Sleeve DH-9ZP & DH-9SS

Designed for slip-in installation into a 4-in. (0.10m) diameter core hole in concrete or in an existing steel structure.



### Manhole Collar DH-11/

Designed for applications involving frequent set-ups over similarly-sized access openings. Simply slip collar into sewer manhole, tank hatch or other opening.



## Portable & Fixed Base Options

SKU	DESCRIPTION	WEIGHT
DH-4/	Three-Piece Portable Base, Lightweight Powder-coated Aluminum	61 lbs. (27.7 kg)
DH-5/	Barrel Mount Sleeve w/3.5-in. (0.09m) Opening, Zinc-plated, Mild Steel	36 lbs. (16.3 kg)
DH-6/	Adjustable Barrel Mount Sleeve, Anodized Welded Aluminum w/Zinc-plated Steel Hardware	56 lbs. (25.4 kg)
DH-7ZP/	Floor Mount Sleeve, Zinc-plated, Mild Steel	13 lbs. (5.9 kg)
DH-7SS/	Floor Mount Sleeve, 304 Stainless Steel	13.5 lbs. (6.1 kg)
DH-8ZP/	Wall Mount Sleeve, Zinc-plated, Mild Steel	12 lbs. (5.4 kg)
DH-8SS/	Wall Mount Sleeve, 304 Stainless Steel	13 lbs. (5.9 kg)
DH-9ZP/	Core Mount Sleeve, Zinc-plated, Mild Steel	8 lbs. (3.6 kg)
DH-9SS/	Core Mount Sleeve, 304 Stainless Steel	8 lbs. (3.6 kg)
DH-11/17.5	17.5-in. (.44m) Manhole Collar for use with 18-in. to 20-in. (.46m to .51m) diameter Manways, Lightweight, Powder-coated Aluminum	26 lbs. (11.8 kg)
DH-11/19.5	19.5-in. (.50m) Manhole Collar for use with 20-in. to 22-in. (.51m to .56m) diameter Manways, Lightweight, Powder-coated Aluminum	29.5 lbs. (13.4 kg)
DH-11/21.5	21.5-in. (.54m) Manhole Collar for use with 22-in. to 24-in. (.56m to .61m) diameter Manways, Lightweight, Powder-coated Aluminum	33.5 lbs. (15.2 kg)
DH-11/23.5	23.5-in. (.60m) Manhole Collar for use with 24-in. to 26-in. (.61m to .66m) diameter Manways, Lightweight, Powder-coated Aluminum	38 lbs. (17.2 kg)
DH-11/25.5	25.5-in. (.65m) Manhole Collar for use with 26-in. to 28-in. (.66m to .71m) diameter Manways, Lightweight, Powder-coated Aluminum	43 lbs. (19.5 kg)
DH-11/27.5	27.5-in. (.70m) Manhole Collar for use with 28-in. to 30-in. (.71m to .76m) diameter Manways, Lightweight, Powder-coated Aluminum	48 lbs. (21.8 kg)
DH-20ZP/	Flush Floor Mount Sleeve, Zinc-plated, Mild Steel	24 lbs. (10.9 kg)
DH-20SS/	Flush Floor Mount Sleeve, 304 Stainless Steel	25 lbs. (11.3 kg)
<b>Base Accessories</b>		
DH-10ZP/	Sleeve Cap that keeps dirt and debris from getting into the opening of various sleeve mounts, Zinc-plated, Mild Steel	1.2 lbs. (0.5 kg)
DH-10SS/	Sleeve Cap that keeps dirt and debris from getting into the opening of various sleeve mounts, 304 Stainless Steel	0.8 lbs. (0.4 kg)

## Vehicle Hitch Mounts

Designed to install into a 2-in. (.05 m) receiver on an attendant vehicle to provide a portable anchor point for confined space entry/retrieval, rescue and fall arrest applications.



**Vehicle Hitch Mount Sleeve**  
DH-12/



**2-ft. (.61m) Extension**  
DH-13/



**Multi-Directional Bumper Receiver**  
DH-14/

## Vehicle Hitch Mounts



*2-in. (.05 m)  
Ball Hitch Adapter  
DH-16/*



*Pintle Hitch Adapter  
DH-15/*



*Single Direction  
Bumper Receiver  
DH-17/*

SKU	DESCRIPTION	WEIGHT
DH-12/	Vehicle Hitch Mount Sleeve	49 lbs. (22.2 kg)
DH-13/	Vehicle Hitch Mount 2-ft. (.61 m) Extension, Zinc-plated	17 lbs. (7.7 kg)
DH-14/	Multi-Directional Bumper Receiver, Zinc-plated	8.5 lbs. (3.9 kg)
DH-15/	Pintle Hitch Adapter, Zinc-plated	13 lbs. (5.9 kg)
DH-16/	2-in. (.05 m) Ball Hitch Adapter, Zinc-plated	19 lbs. (8.6 kg)
DH-17/	Single Direction Bumper Receiver, Zinc-plated	7.6 lbs. (3.5 kg)

## Winch & Hoist Mounting Bracket

This bracket assembly is required to mount a Miller ManHandler® Hoist/Winch or a Miller MightEvac® SRL to the DuraHoist Portable Confined Space System.

(DH-19-MILLER is an assembly of the DH-19/ bracket & the DH-AB-MILLER/ bracket)



*Complete Mounting Bracket Assembly  
DH-19-MILLER/*

SKU	DESCRIPTION	WEIGHT
DH-19-MILLER/	Complete Mounting Bracket Assembly for Miller Manhandler Hoist/Winch or Miller MightEvac SRL	3.1 lbs. (1.4 kg)
DH-19/	Winch Mount Bracket	1.6 lbs.(0.73 kg)
DH-AB-MILLER/	Adapter Bracket for Miller MightEvac SRL (Requires a DH-19/ Bracket)	1.5 lbs.(0.68 kg)
DH-AP-8/	Flat Quick-Mount Bracket (Requires a DH-19/ Bracket)	2.5 lbs. (1.1kg)
DH-AB-DBI/	Adapter Bracket for DBI Winch or SRL	1.8 lbs.(0.82 kg)
DH-AB-DBI/30	Adapter Bracket for DBI Winch or SRL (30 degree incline) (Requires a DH-19/ Bracket)	2.6 lbs (1.2 kg)



*Adapter Bracket  
DH-AB-DBI/30*



*Quick-Mount Bracket  
DH-AP-8/*



*Winch Mount Bracket  
DH-19/*

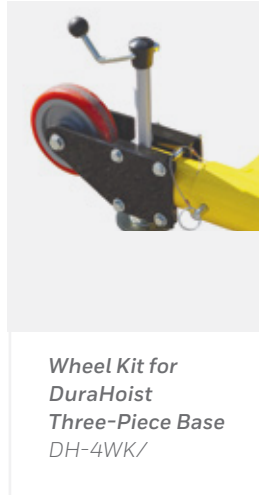
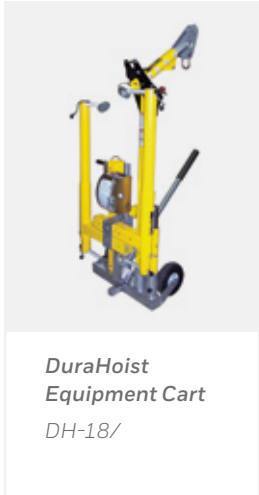


*Adapter Bracket  
DH-AB-DBI/*



*Adapter Bracket  
DH-AB MILLER/*

## Accessories



SKU	DESCRIPTION	WEIGHT
<b>DuraHoist Equipment Cart</b>		
DH-18/	Equipment Cart for DuraHoist Four-Piece Hoist System (DH-1/, DH-2/)	40 lbs. (18.1 kg)
DH-18DC/	Dust Cover for the DuraHoist Equipment Cart	2 lbs. (0.91 kg)
<b>Wheel Kit for Three-Piece Base</b>		
DH-4WK/	Wheel Kit (Two Wheels) for the DuraHoist Three-Piece Base (DH-4/)	30 lbs. (13.6 kg)
<b>Carrying Bags</b>		
DH-2BAG/	Set of two Carrying Bags for DuraHoist Four-Piece Hoist System (DH-2/)	6 lbs. (2.7 kg)
DH-3BAG/	Carrying Bag for One-Piece Adjustable Mast (DH-3/)	6 lbs. (2.7 kg)
DH-4BAG/	Carrying Bag for Three-Piece Base (DH-4/)	3.7 lbs. (1.7 kg)

## MILLER DURAHOIST PORTABLE FALL ARREST POST & ACCESSORIES

### Portable Fall Arrest Post & Extension Post

- Provides three independent swivel tie-off points for fall arrest anchorage (Three workers maximum in any configuration)
- Three-stage/four-position telescoping design and aluminum construction for easy transportation and set-up
- Leveling screws allow the system to be plumbed to vertical on inclines up to 15 degrees
- Portable and fixed bases allow for versatile usage

#### Suggested Applications:

- Electrical transformers
- Leading edge deck work
- Confined space and rescue
- Industrial presses
- Bridge cranes
- Large cranes
- Limited horizontal lifeline applications

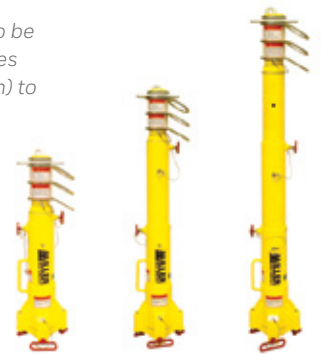


#### 14-in. (0.36m) Extension Post DH-AP-2/

*Provides option to tie-off one worker at an increased height of 68.5-in. (1.74 m)*

#### Portable Fall Arrest Post DH-AP-1/

*Telescoping design allows overall height to be adjusted in three stages from 32.75-in. (0.83 m) to 57.25-in. (1.45 m)*



SKU	DESCRIPTION	WEIGHT
DH-AP-1/	Portable Fall Arrest Post	38 lbs. (17.2 kg)
DH-AP-2/	14-in. (0.36m) Extension Post	4.5 lbs. (2.0 kg)



## Rescue / Material Handling Davit Arm

- Designed for rescue and material handling applications
- Quick-attach design assembles easily
- Lightweight aluminum construction makes davit arm easy to transport and set-up

SKU	DESCRIPTION	WEIGHT
DH-AP-3/	Rescue/Material Handling Davit Arm	20.5 lbs. (9.3 kg)



Rescue/Material Handling Davit Arm DH-AP-3/

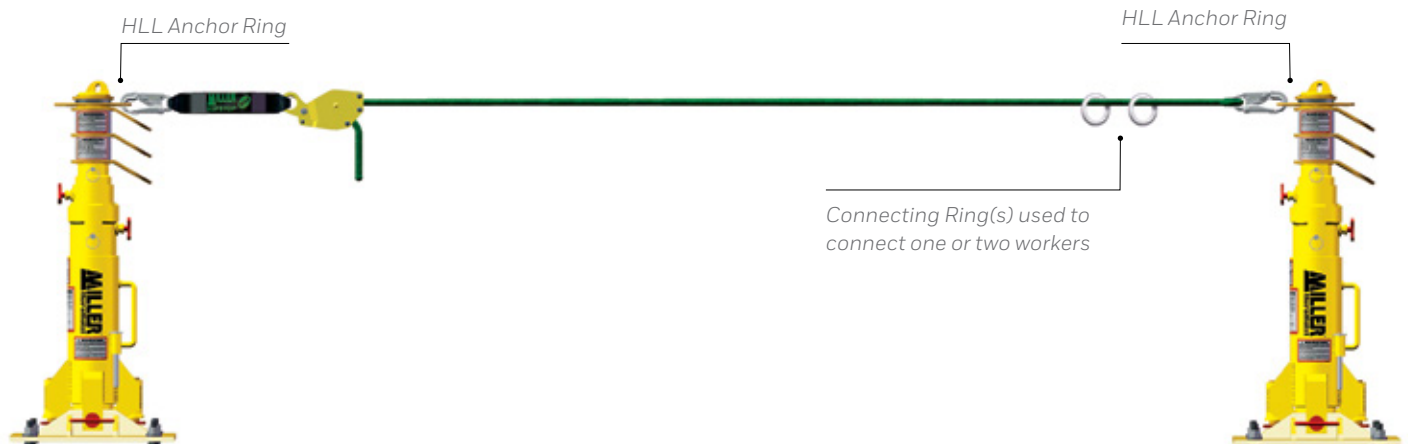
## Miller TechLine™ Temporary Horizontal Lifeline Kits

System offers continuous fall protection for the length of the lifeline when used in conjunction with DuraHoist Fall Arrest Posts (DH-AP-1/). Ideal for applications where an overhead anchorage does not exist.

- Kits include:
- 5/8-in. (.02m) polyester rope lifeline
- Line adjuster/tensioner
- Connecting ring(s)
- Snap hook
- In-line shock absorber (two worker kits only)

SKU	DESCRIPTION	WEIGHT
HLLR1-L/30FT	30-ft. (9.1 m)	1 worker
HLLR1-L/60FT	60-ft. (18.3 m)	1 worker
HLLR2-L/30FT	30-ft. (9.1 m)	2 workers
HLLR2-L/60FT	60-ft. (18.3 m)	2 workers

Additional Horizontal Lifeline products are available; contact Miller Technical Service 800-873-5242 (press 4 for Technical Service).



## Anchor Base & Anchor Plates

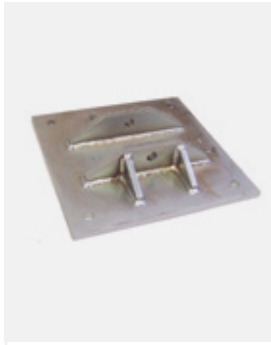
### Portable Anchor Base & Plate



#### Portable I-beam Anchor Base

Attaches to steel I-beams

DH-AP-9/



#### Bolt-on Anchor Plate

For use in concrete or steel applications (Portable or Permanent)

DH-AP-12/



SKU	DESCRIPTION	WEIGHT
<b>Portable Anchor Base</b>		
DH-AP-9/	Portable I-beam Anchor Base	56 lbs. (25.4 kg)
<b>Portable/Fixed Anchor Plate</b>		
DH-AP-12/	Bolt-on Anchor Plate	43 lbs. (19.5 kg)

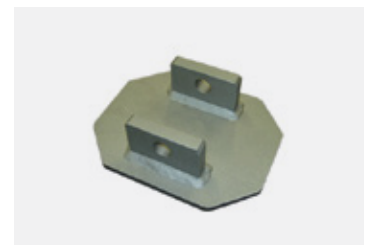
### Fixed Anchor Plates

Designed to be permanently welded to existing structures in locations of frequent work, or where the use of a portable base is impractical. Plates for inclined surfaces (DH-AP-6/, DH-AP-7/) can be customized to your specific incline requirements up to a maximum of 45 degrees.

SKU	DESCRIPTION	WEIGHT
DH-AP-4/	Plate with Tie-off Anchor	11.8 lbs. (5.4 kg)
DH-AP-5/	Standard Plate	11.6 lbs. (5.3 kg)
DH-AP-6/	Plate for Inclined Surfaces with Tie-off Anchor	24 lbs. (10.9 kg)
DH-AP-7/	Plate for Inclined Surfaces	23.4 lbs. (10.6 kg)



Plate w/Tie-off Anchor  
DH-AP-4/



Standard Plate  
DH-AP-5/

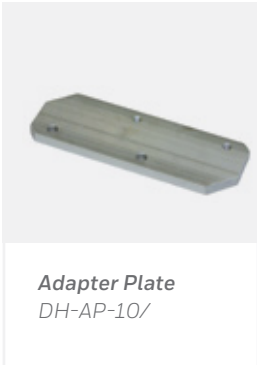


Plate for Inclined Surfaces w/Tie-off Anchor  
DH-AP-6/

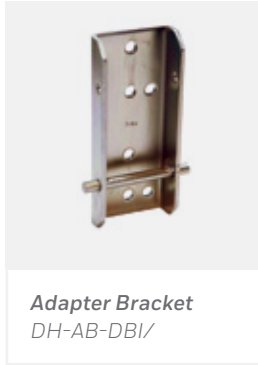


Plate for Inclined Surfaces  
DH-AP-7/

## Winch & Hoist Mounting Brackets



**Adapter Plate**  
DH-AP-10/



**Adapter Bracket**  
DH-AB-DBI/



**Quick-Mount Bracket**  
DH-AP-8/

Carrying Bag for Portable Fall Arrest Post or Rescue/ Material Handling Davit Arm (DH-AP-1/ or DH-AP-3/) DH-AP-1-3BAG/

Carrying Bag for 14-in. (.36m) Extension Post (DH-AP-2/) DH-AP-2BAG/

SKU	DESCRIPTION	WEIGHT
DH-AP-11/	Complete Assembly of Adapter Plate (DH-AP-10/) and Bracket (DH-AB-MILLER/*) for mounting ManHandler Hoist/Winch or MightEvac SRL	2.7 lbs. (1.2 kg)
DH-AP-10/	Adapter Plate for attaching Bracket (DH-AB-Miller/*) to Davit Arm (DH-AP-3/)	1.2 lbs. (0.5 kg)
DH-AP-8/	Flat Quick-Mount Bracket	2.5 lbs. (1.1 kg)
DH-AB-DBI/	Adapter Bracket for DBI Winch	1.8 lbs. (0.8 kg)



**Complete Adapter Plate with Bracket Assembly**  
DH-AP-11/

## Accessories

SKU	DESCRIPTION	WEIGHT
DH-AP-1-3BAG/	Carrying Bag	3 lbs. (1.4 kg)
DH-AP-2BAG/	Carrying Bag	1.5 lbs. (0.7 kg)

## HOISTS/WINCHES

### Miller ManHandler® Hoists

- The perfect solution for confined space entry, rescue, positioning and personnel/material handling. A secondary fall arrest system is recommended for fall protection.
- 350 lbs. (159 kg) working capacity
- Compact, durable steel construction
- Effortless lifting and lowering with 5:1 gear ratio. Anti-backlash crank handle braking system.
- Compatible with DuraHoist™ Portable Confined Space System & DuraHoist Rescue/Material Handling Davit Arm



SKU	DESCRIPTION	WEIGHT
8442-Z7/65FT	ManHandler personnel-rated hoist w/65-ft. (20m) of 3/16-in. (4.76mm) galvanized steel cable	40.1 lbs. (18.2 kg)
8442SS-Z7/65FT	ManHandler personnel-rated hoist w/65-ft. (20m) of 3/16-in. (4.76mm) stainless steel cable	37 lbs. (16.8 kg)
8442-Z7/100FT	ManHandler personnel-rated hoist w/100-ft. (30m) of 3/16-in. (4.76mm) galvanized steel cable	46 lbs. (20.9 kg)
8442SS-Z7/100FT	ManHandler personnel-rated hoist w/100-ft. (30m) of 3/16-in. (4.76mm) stainless steel cable	46 lbs. (20.9 kg)

NOTE: All products include connectors with 3,600-lb. gate-strength



## Miller MightEvac® Self-Retracting Lifelines (SRL) with Emergency Retrieval Hoist

- Combines the superior performance and reliability of the Miller MightyLite™ SRL with a quick-activating retrieval mechanism for emergency evacuation.
- No annual factory recertification required\*
  - Significant long-term savings/lower cost of ownership
- 310 lbs. (141 kg) weight capacity
- For emergency evacuation only
- Compatible with DuraHoist Portable Confined Space System & DuraHoist Rescue/Material Handling Davit Arm



\* Does not apply to Canada due to CSA Z259.2.2-98 requirements. Must be inspected by a Miller authorized service center if involved in a fall or it fails user visual or function inspection.

SKU	DESCRIPTION	WEIGHT
MR50GB-Z7/50FT	Miller MightEvac SRL w/50-ft. (15 m) of 3/16-in. (4.76 mm) galvanized wire rope, mounting bracket & carabiner	39 lbs. (17.7 kg)
MR50SB-Z7/50FT	Miller MightEvac SRL w/50-ft. (15 m) of 3/16-in. (4.76 mm) stainless steel wire rope, mounting bracket & carabiner	39 lbs. (17.7 kg)
MR100GB-Z7/100FT	Miller MightEvac SRL w/100-ft. (30 m) of 3/16-in. (4.76 mm) galvanized wire rope, mounting bracket & carabiner	59 lbs. (26.8 kg)
MR100SB-Z7/100FT	Miller MightEvac SRL w/100-ft. (30 m) of 3/16-in. (4.76 mm) stainless steel wire rope, mounting bracket & carabiner	59 lbs. (26.8 kg)
MR130GB-Z7/130FT	Miller MightEvac SRL w/130-ft. (40 m) of 3/16-in. (4.76 mm) galvanized wire rope, mounting bracket & carabiner	64 lbs. (29.0 kg)
MR130SB-Z7/130FT	Miller MightEvac SRL w/130-ft. (40 m) of 3/16-in. (4.76 mm) stainless steel wire rope, mounting bracket & carabiner	64 lbs. (29.0 kg)

NOTE: All products include connectors with 3,600-lb. gate-strength

### Limitless Possibilities. Ask the Expert.

Technical Service: 800.873.5242  
[www.millerfallprotection.com](http://www.millerfallprotection.com)

### Honeywell Industrial Safety

900 Douglas Pike  
 Smithfield, RI 02917  
 USA:  
 Phone: 800.430.5490  
 Fax: 800.322.1330  
[www.honeywell.com](http://www.honeywell.com)

Canada:  
 Phone: 888.212.7233  
 Fax: 888.667.8477

LMDCSS 04/2017  
 © 2017 Honeywell International Inc.

