



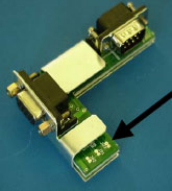
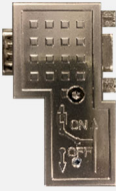
## Technical Note

### Vertex Replacement Profibus Card

1998-1037 Rev 2-1 4/22

The information contained within this Technical Note is intended for the personnel that has knowledge in setting up and maintaining a Profibus network.

With the replacement of the Vertex Profibus option per Bulletin number 2020091, the following instructions and files will be required for the replacement card to function properly.

Impacted Part Numbers	Replacement Part Numbers	Description
1295-0275		Profibus PLC card with Adaptor
0185-0077 	0185-0140 	Profibus PLC card only
1295A0372 	1295-0700 	Profibus Adaptor (right angle connector)

#### Required

Keyboard

USB memory stick

**\*Vertex Prosoft MVI46-PDPS Profibus Support** folder for Vertex Systems with Vertex software release 1.25.13 and older

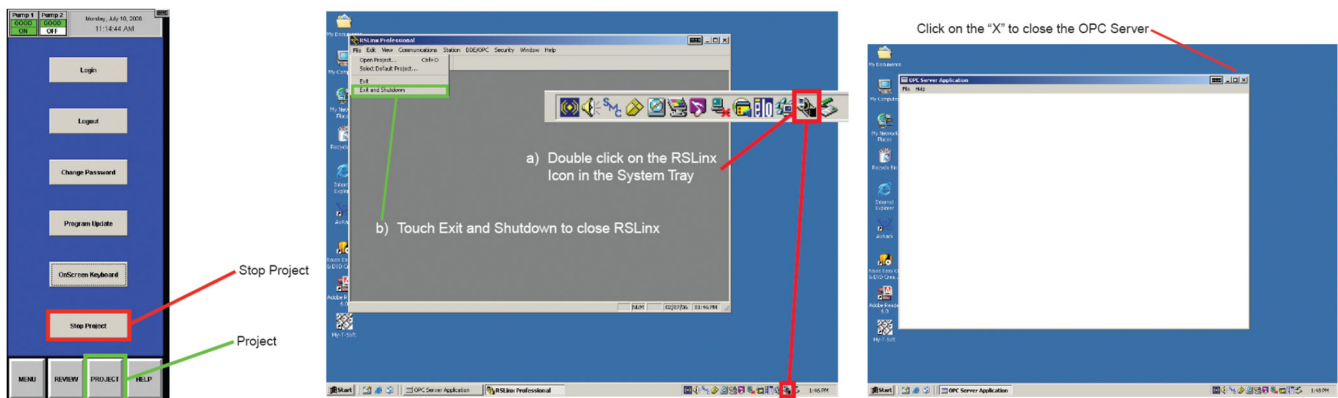
\*New RSS files

\*(Contact Technical Support for obtaining the RSS files, reference Article number: 000039134)

## Technical Note

---

1. Place zip file on to the USB memory stick and extract the files
2. Remove back panel from the Vertex rack
3. Close the project by Main Screen
4. Connect a keyboard to the Vertex computer – ports are located on back of the computer (models may vary on location)
5. Shutdown the Project (detailed instructions can be located in the manual)
  - a. Click “Project”
  - b. Click “Stop Project”
  - c. Close “RSLinx”
    - i. Double click icon in system tray
    - ii. Click “File”
    - iii. Select “Exit and Shutdown”
  - d. Click OPC Server and Click the “X”

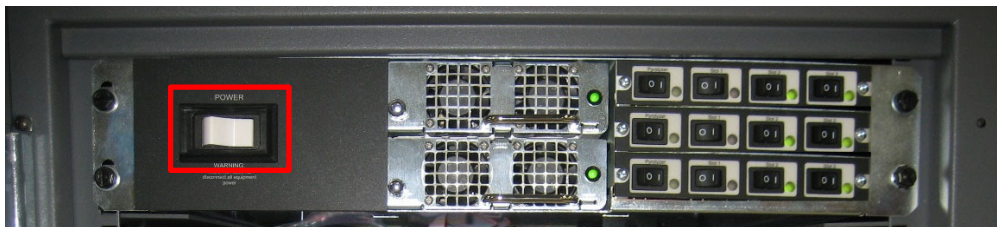


6. Open File Explorer

## Technical Note

---

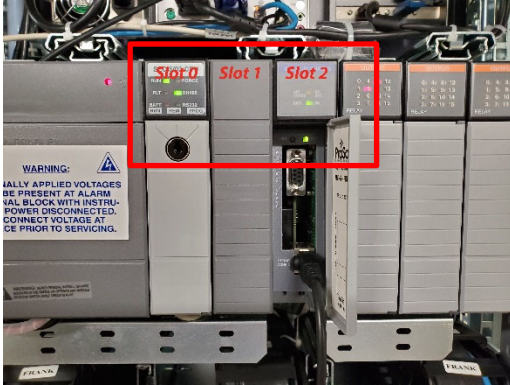
7. Navigate to USB memory stick “Vertex Prosoft MVI46-PDPS Profibus” folder, there should be folder three subfolders and one README.TXT file available:
  - a. PCB – Prosoft Configuration Builder, is used to configure the Prosoft fieldbus products, but should not be needed with the Vertex System
  - b. Prosoft Profibus – Prosoft Profibus card datasheet, manual, and General Station Description (GSD) file
  - c. Vertex – All files needed for the Vertex System to support the card
  - d. README.TXT – Information about the support folder
8. In the “Vertex” folder copy the folder “hmi” over the Vertex System’s application folder “C:\hmi”. This will update the with all necessary files to support the Prosoft Profibus card
9. In the “Vertex” folder copy the file “Prosoft Profi-Config” to the Windows desktop. This is a TeraTerm script for configuring the Prosoft Profibus card
10. Plug in provided diagnostic and configuraiton cable in Prosoft Profibus card and in COM port 2 on the Vertex System
11. Run the “Prosoft Profi-Config” script to configure the Prosoft Profibus card
12. The Prosoft Profibus card may also be configure manually, if unable to run the scrip
  - a. Open TeraTerm COM port to Prosoft Profibus card with 57500, 8-Bit, None, 1 Stop, No flow control
  - b. In the Profibus card diagnostic console, enter the commands “R”, then “Y”
  - c. Z-modem the file C:\ hmi\FieldbusFiles\Profibus\PDPS.CFG
13. The Prosoft Profibus Card is configured:
  - a. Slave Address – 3
  - b. Write Register Count – 122 words
  - c. Swap Input Bytes - Yes
14. Shut down the PC via the standard Windows Shut Down procedure
15. Turn off the Vertex Rack



## Technical Note

---

16. Remove old card (if applicable) and insert the new card into Vertex PLC Slot number 2

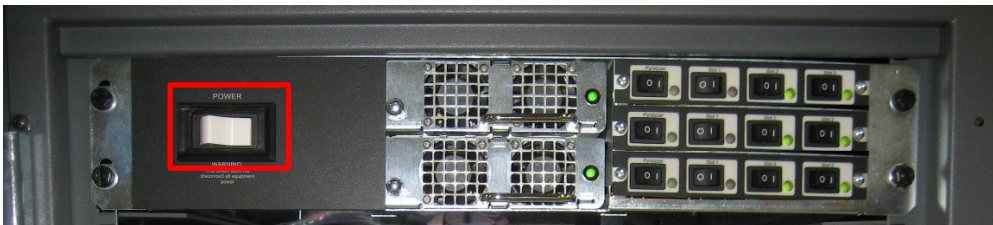


17. Attach the provided 90° profibus connector to the end of your profibus cable

18. Connect Profibus connector to the Profibus card and ensure switch is in the "On" position to terminate if at end of bus



19. Restore power to the Rack



## Technical Note

---

20. Determine the file to be used by reviewing the PLC hardware installed

ZAV\_(relay module type)\_(network module type)\_(number of PLC backplanes)\_22.rss

### Relay module type

- a. ZAV\_08R = 8 way relay (isolated)
- b. ZAV\_16R = 16 way relay (non-isolated)

Note: if no relays are installed, then choose either of the above and set the relay card count to "0" in the Configuration Utility.

### Network module type

- c. ZAV\_(relay module type)\_CNet = Control Net
- d. ZAV\_(relay module type)\_DNet = Device Net
- e. ZAV\_(relay module type)\_DF1 = DF1
- f. ZAV\_(relay module type)\_MBP1 = Modbus Plus
- g. ZAV\_(relay module type)\_Lon = LonWorks
- h. ZAV\_(relay module type)\_Prof = Profibus
- i. ZAV\_(relay module type)\_MVI46-PDPS\_Prof = Profibus (2nd gen card)
- j. ZAV\_(relay module type)\_0Net = no data output

### Number of PLC Backplanes

- k. ZAV\_(relay module type)\_(network module type)\_1Bp = 1 PLC backplane
- l. ZAV\_(relay module type)\_(network module type)\_2Bp = 2 PLC backplanes

### Heartbeat

- m. ZAV\_(relay module type)\_(network module type)\_(number of PLC backplanes)\_20 = No heartbeat bit on data output
- n. ZAV\_(relay module type)\_(network module type)\_(number of PLC backplanes)\_22 = with heartbeat bit on data output

## Technical Note

---

21. Click "Program Update"



22. In the PLC section, Press "Select PLC File".

23. Select the appropriate file as defined in step 15

Example: "ZAV\_16R\_MVI46-PDPS\_Prof\_2Bp\_22.rss" is equal to having the 16 contact relay modules (16R), Profibus (new version), and 2 PLC backplanes (2).

24. On the PLC CPU module.

a. Locate the key just to the left of the top PLC on a pull string connected to the system cabinet.

b. Switch the PLC CPU from the "REM" position to "PRGM", then back to the "REM" position.

25. Press "Download PLC Program".

26. Are you sure..., Press "Yes".

27. Do you want to go online? Press "No"

Note: This process will take a few minutes

28. Reset all active faults

Procedure is now complete and the Vertex can be returned to normal operation

## ***Technical Note***

---

### Profibus Master Support

From the “Vertex Prosoft MVI46-PDPS Prosoft support” folder, the folder “Prosoft Prosofibus” contains the GSD file needed for the Profibus Master to add the Prosoft MVI46-PDPS Profibus slave. The Profibus Master should add the slave with 122 words input.

The [Prosoft MVI46-PDPS](#) GSD file may also be download from the Prosoft web site.

## Technical Note

---

**Find out more:**

[www.honeywellanalytics.com](http://www.honeywellanalytics.com)

[www.raesystems.com](http://www.raesystems.com)

**Contact Honeywell Analytics:**

**Europe, Middle East, Africa**

Life Safety Distribution GmbH  
Javastrasse 2  
8604 Hegnau  
Switzerland  
Tel: +41 (0)44 943 4300  
Fax: +41 (0)44 943 4398  
gasdetection@honeywell.com

**Customer Service:**

Tel: 00800 333 222 44 (Freephone number)

Tel: +41 44 943 4380 (Alternative number)

Fax: 00800 333 222 55

Middle East Tel: +971 4 450 5800 (Fixed Gas Detection)

Middle East Tel: +971 4 450 5852 (Portable Gas Detection)

**Americas**

Honeywell Analytics Distribution Inc.  
405 Barclay Blvd.  
Lincolnshire, IL 60069  
USA  
Tel: +1 847 955 8200  
Toll free: +1 800 538 0363  
Fax: +1 847 955 8210  
detectgas@honeywell.com

RAE Systems by Honeywell

Phone: 408.952.8200

Toll Free: 1.888.723.4800

Fax: 408.952.8480

**Asia Pacific**

Honeywell Industrial Safety  
7F SangAm IT Tower,  
434, Worldcupbuk-ro, Mapo-gu,  
Seoul 03922,  
Korea

Tel: +82 (0) 2 6909 0300

Fax: +82 (0) 2 2025 0328

India Tel: +91 124 4752700

China Tel: +86 10 5885 8788 3000

[analytics.ap@honeywell.com](mailto:analytics.ap@honeywell.com)

**Technical Services**

EMEA: HAexpert@honeywell.com

US: ha.us.service@honeywell.com

AP: ha.ap.service@honeywell.com

**Technical Services**

[ha.us.service@honeywell.com](mailto:ha.us.service@honeywell.com)

[self-service support](#)

While every effort has been made to ensure accuracy in this publication, no responsibility can be accepted for errors or omissions. Data may change, as well as legislation, and you are strongly advised to obtain copies of the most recently issued regulations, standards and guidelines. This publication is not intended to form the basis of a contract and the company reserves the right to amend the design and specification without notice.