

# ToxiRAE Pro PID

## User's Guide



# ToxiRAE Pro PID User's Guide

## Contents

Read Before Operating .....	3
1. General Information.....	6
2. Specifications.....	7
3. Overview.....	8
4. User Interface.....	8
4.1. Display Overview .....	9
4.2. Status Indicator Icons.....	9
5. Charging The ToxiRAE Pro PID.....	10
5.1. Removing The ToxiRAE Pro PID From The Charging Cradle.....	11
5.2. Low Voltage Shutoff.....	11
6. Turning The ToxiRAE Pro PID On .....	12
7. Turning The ToxiRAE Pro PID Off .....	13
8. Testing The Alarms (Manually).....	13
9. Low Battery Warnings.....	14
10. Dead Battery Warning & Shutoff .....	14
11. Operating The ToxiRAE Pro PID.....	15
11.1. Overview.....	15
11.1.1. Normal Mode.....	15
11.1.2. Basic User Mode.....	16
11.1.3. Advanced User Mode .....	17
11.2. Navigation In Normal Mode.....	17
11.2.1. TWA, STEL, Peak .....	18
11.2.2. Date, Time, And Temperature .....	18
11.2.3. Wireless Settings.....	18
11.2.4. Calibration Gas, Measurement Gas, Correction Factor .....	18
11.2.5. Enter Communications and stop measurement? .....	19
11.3. Programming.....	19
11.4. Entering Programming Mode .....	19
11.4.1. Navigating Programming Menus.....	21
11.5. Programming Menus.....	21
11.5.1. Calibration.....	22
11.5.2. Measurement.....	23
11.5.3. Alarm Setting.....	24
11.5.4. Datalog.....	28
11.5.5. Monitor Setup .....	30
11.6. Exit (Exit Programming Mode) .....	35
12. Policy Enforcement.....	36
12.1. Setting Policy Enforcement .....	36
12.1.1. AutoRAE 2 Cradle.....	36
12.1.2. ToxiRAE Pro PID Desktop Cradle Or Travel Charger .....	40
12.2. Deactivating Policy Enforcement .....	42
12.2.1. AutoRAE 2 Cradle.....	42
12.2.2. ToxiRAE Pro PID Desktop Cradle Or Travel Charger .....	42
13. Bump Testing & Calibrating The ToxiRAE Pro PID.....	44
13.1. Bump Testing & Calibrating With An AutoRAE 2™.....	44
13.1.1. Bump (Functional) Testing.....	44

## ToxiRAE Pro PID User's Guide

13.2.	Calibration Adapter.....	44
13.2.1.	Connecting The Calibration Adapter.....	44
13.2.2.	Disconnecting The Calibration Adapter .....	45
13.3.	Zero Calibration.....	45
13.4.	Span Calibration.....	46
13.4.1.	Changing Span Gas Concentration .....	47
14.	Diagnostic Mode.....	48
14.1.	Entering Diagnostic Mode .....	48
14.2.	Navigating Diagnostic Mode .....	48
14.3.	Exiting Diagnostic Mode .....	48
15.	Alarm Signal Summary.....	49
16.	Downloading Datalogs And Performing PC-Based Instrument Configuration and Firmware Upgrades .....	50
17.	Maintenance.....	51
17.1.	Replacing the ToxiRAE Pro PID Li-Ion Battery.....	51
17.2.	Proper Battery Disposal .....	54
17.3.	Removing And Installing The Rubber Boot .....	55
17.4.	Filter Replacement .....	56
17.5.	Cleaning Or Replacing The PID .....	58
17.6.	Replacing The Fan .....	60
17.7.	Cleaning The Exterior.....	62
17.7.1.	Ordering Replacement Parts .....	62
18.	Troubleshooting.....	63
19.	RAE Systems Contact .....	64
20.	Appendix A: Regulatory Information .....	65

## ToxiRAE Pro PID User's Guide



### Read Before Operating

This manual must be carefully read by all individuals who have or will have the responsibility of using, maintaining, or servicing this product. The product will perform as designed only if it is used, maintained, and serviced in accordance with the manufacturer's instructions.

### CAUTION!

Never operate the monitor when the cover is removed. Remove the monitor top cap, rear cover, fan, or battery only in an area known to be non-hazardous.

### Product Registration

Register your product online by visiting:

<http://www.raesystems.com/support/product-registration>

By registering your product, you can:

- Receive notification of product upgrades or enhancements
- Be alerted to Training classes in your area
- Take advantage of RAE Systems special offers and promotions

## ToxiRAE Pro PID User's Guide



Use only RAE Systems lithium-ion battery part number G02-3004-000 (3.7V, 1,800mAh). This instrument has not been tested in an explosive gas/air atmosphere having an oxygen concentration greater than 21%. Substitution of components may impair suitability for intrinsic safety. Replace batteries only in non-hazardous locations.

**STATIC HAZARD:** Clean only with a damp cloth to avoid damage from electrostatic discharge.

For safety reasons this equipment must be operated and serviced by qualified personnel only. Read and understand this instruction manual completely before operating or servicing.

The monitor should be calibrated every time it does not pass a bump test, but no less frequently than every six months, depending on use and exposure to gas and contamination, and its operational mode.

- Calibration intervals and bump test procedures may vary due to national legislation.
- RAE Systems recommends using RAE calibration gas cylinders with one of the following:
  - Isobutylene, 34L, 100 ppm (balance air), PN 600-0002-000
  - Isobutylene, 100 ppm 103L steel cylinder, PN 600-0002-001
  - Isobutylene Calibration Gas, 100 ppm, 34L cylinder; constant-flow CGA-600 regulator with adapter, PN 002-3025-000
  - Isobutylene, 100 ppm (balance air), 34L cylinder, Dry Air, 0 ppm, 34L cylinder; Constant-flow DGA-600 regulator with adapter, PN 007-3001-000

## ToxiRAE Pro PID User's Guide



Utiliser seulement la batterie Lithium-ion RAE Systems référence G02-3004-000 (3.7V, 1,800mAh). Cet instrument n'a pas été testé dans une atmosphère de gaz/air explosive ayant une concentration d'oxygène plus élevée que 21%. La substitution de composants peut compromettre la sécurité intrinsèque. Ne changer les batteries que dans un emplacement désigné non dangereux.

**RISQUE D'ORIGINE ELECTROSTATIQUE:** Nettoyer uniquement avec un chiffon humide.

Pour des raisons de sécurité, cet équipement doit être utilisé et entretenu uniquement par un personnel qualifié. Étudier le manuel d'instructions en entier avant d'utiliser, ou d'entretenir l'équipement.

- Une vérification d'étalonnage est définie par une exposition du détecteur au gaz d'étalonnage qui doit déclencher le seuil d'alarmes bas.
- Les périodes de calibration peuvent varier suivant les législations locales. RAE Systems préconise d'utiliser les gaz de calibration suivants:
  - Isobutylene, 34L, 100 ppm (balance air), PN 600-0002-000
  - Isobutylene, 100 ppm 103L Cylindre acier, PN 600-0002-001
  - Isobutylene Calibration, 100 ppm, 34L cylindre; débit constant CGA-600 regulateur avec adaptateur, PN 002-3025-000
  - Isobutylene, 100 ppm (balance air), 34L cylindre, Air sec, 0 ppm, 34L cylindre; débit constant DGA-600 regulateur avec adaptateur, PN 007-3001-000

# ToxiRAE Pro PID User's Guide

## 1. General Information

**ToxiRAE Pro PID** is a personal wireless monitor for volatile organic compounds (VOCs), the world's smallest. Featuring RAE Systems' next-generation PID sensor, the ToxiRAE Pro PID can promptly detect and accurately monitor over 300 VOCs. With an onboard library of 190 correction factors, the ToxiRAE Pro PID can be programmed to automatically read in concentrations of the specified compound.

### Key Features

Wireless<sup>1</sup>. Personal. Proven

- Wireless access to real-time instrument readings and alarm status from any location
- Unmistakable five-way local and remote wireless notification of alarm conditions
- Cutting-edge PID with 190 built-in correction factors
- Largest display in its class
- Reliable, rugged, and intrinsically safe
- Continuous datalogging<sup>2</sup> capability
- Fully automated bump testing and calibration with AutoRAE 2<sup>3</sup>
- Easy to maintain with replaceable sensor, fan, and Lithium-ion battery
- Available in Industrial Hygiene (advanced) or Safety (basic)<sup>3</sup> configurations
- Wireless or non-wireless versions<sup>4</sup> are available

---

<sup>1</sup> Wireless functionality is currently offered in 2011 in North America and Europe. Contact RAE Systems for availability in other regions.

<sup>2</sup> Available with Industrial Hygiene configurations only.


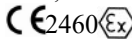
<sup>3</sup> Contact RAE Systems for availability.

<sup>4</sup> Wireless versions have a functioning wireless modem and are ready for wireless deployments. "Non-wireless" versions cannot be upgraded to wireless in the future. Additional equipment and/or software licenses may be required to enable remote wireless monitoring and alarm transmission.

# ToxiRAE Pro PID User's Guide

## 2. Specifications

### ToxiRAE Pro PID Specifications

<b>Dimensions</b>	118 mm x 60 mm x 30 mm (4.6" x 2.4" x 1.2")
<b>Weight</b>	235g (8.3 oz)
<b>Battery</b>	Internal rechargeable Li-ion
<b>Charging Time</b>	Less than 4 hours
<b>Operating Time</b>	More than 12 hours on full charge (normal operation)
<b>Charger</b>	Charging and PC communication cradle: AC / DC adapter with international prong kit (100 to 240V, 50/60 Hz AC to 12V DC)
<b>Alarms</b>	Multi-unit charging station for up to 5 units (data download from one): AC/DC adapter for the multi-unit charging station Audio alarm – 95 dB @ 30cm Visual alarm – 4 bright red LED lights Vibration alarm Activated display backlighting and on-screen indication of alarm conditions Wireless alarm notification sent to remote observers (wireless versions only)
<b>Display</b>	Monochrome dot-matrix graphical LCD display
<b>Display Backlight</b>	Manually and on alarm
<b>Keypad</b>	2 programming/operation keys
<b>Direct Readout</b>	Real-time reading of VOC concentrations in parts per million or mg/m <sup>3</sup> ; battery status; data logging on/off status; wireless reception quality; STEL, TWA, and peak values; calibration and measurement gases, correction factors
<b>Sampling Method</b>	Fan-assisted diffusion
<b>Datalogging</b>	Capacity: 3 months at 1-minute interval Datalog interval: user-configurable from 1 to 3,600 seconds
<b>Calibration</b>	Two-point field calibration of zero and standard reference gas Adjustable span value Maintains calibration date
<b>IP Rating</b>	IP-54
<b>Docking Station</b>	AutoRAE 2 Automatic Test and Calibration Station
<b>Protection:</b>	Password-protected calibration settings, alarm limits, and data
<b>Hazardous Location Approvals</b>	 Class I, Div. 1; Gr. A,B,C,D T4 Class I, Zone 0 A/Exia IIC T4 ATEX  II 1G, Ex ia IIC T4 Ga IECEX: Ex ia IIC T4 Ga China: Ex ia IIC T4
<b>CE Compliance (European Conformity)</b>	EMC directive: 2014/30/EU Radio equipment directive: 2014/53/EU ATEX directive: 2014/34/EU
<b>Operating Temperature</b>	-4° to 131° F (-20° to 55° C)
<b>Humidity</b>	0 to 95% relative humidity (non-condensing)
<b>Warranty</b>	Two years on non-consumable components (per RAE Systems Standard Warranty); one year on fan, sensor, battery, and other consumable components



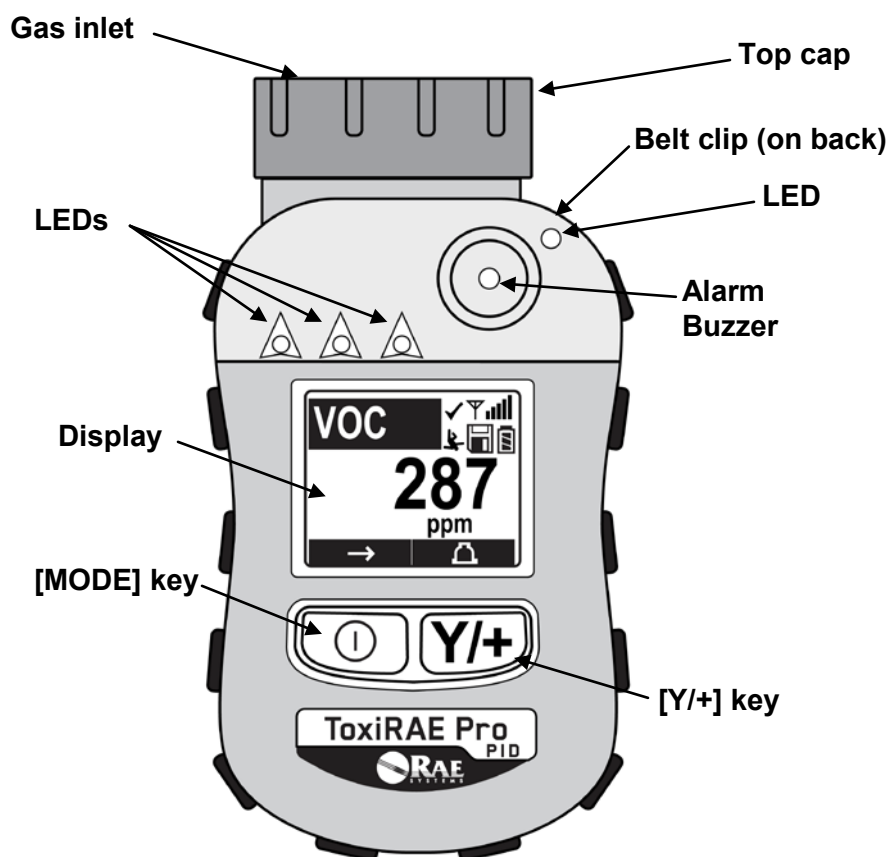
# ToxiRAE Pro PID User's Guide

## 3. Overview

The ToxiRAE Pro PID is a wireless, personal volatile organic compounds (VOC) monitor, the world's smallest. The ToxiRAE Pro PID takes worker protection to the next level by providing safety professionals wireless access to real-time instrument readings and alarm status from any location for better visibility and faster response. The ToxiRAE Pro PID features RAE Systems' next-generation PID sensor that delivers fast, reliable detection and accurate monitoring of a wide variety of VOCs in a broad range of temperature and humidity conditions.

## 4. User Interface

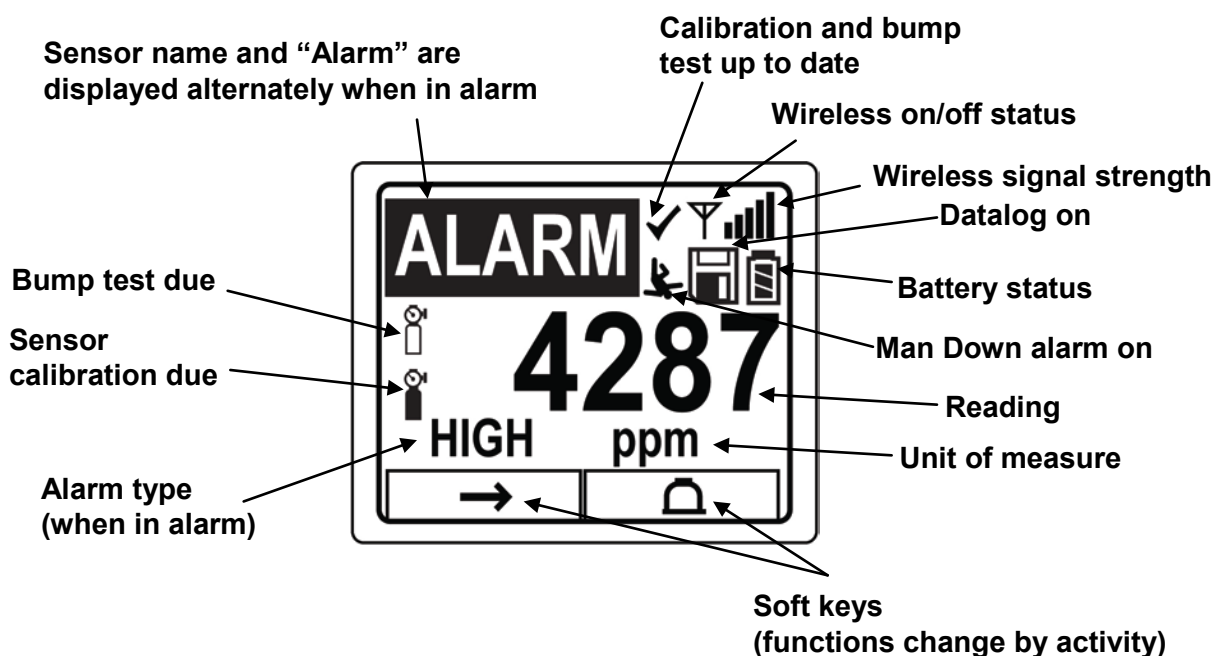
The ToxiRAE Pro PID's user interface consists of the display, four LEDs, an alarm buzzer, and two keys, [MODE] and [Y/+]. The LCD displays real-time reading in specified measurement units, sensor type, alarm type (when in alarm, including cal. overdue), battery status, datalog (if on), and radio and connection quality (if available).



# ToxiRAE Pro PID User's Guide










## 4.1. Display Overview

The LCD display provides visual feedback that includes the sensor types, readings, time, battery condition, and other functions.



## 4.2. Status Indicator Icons

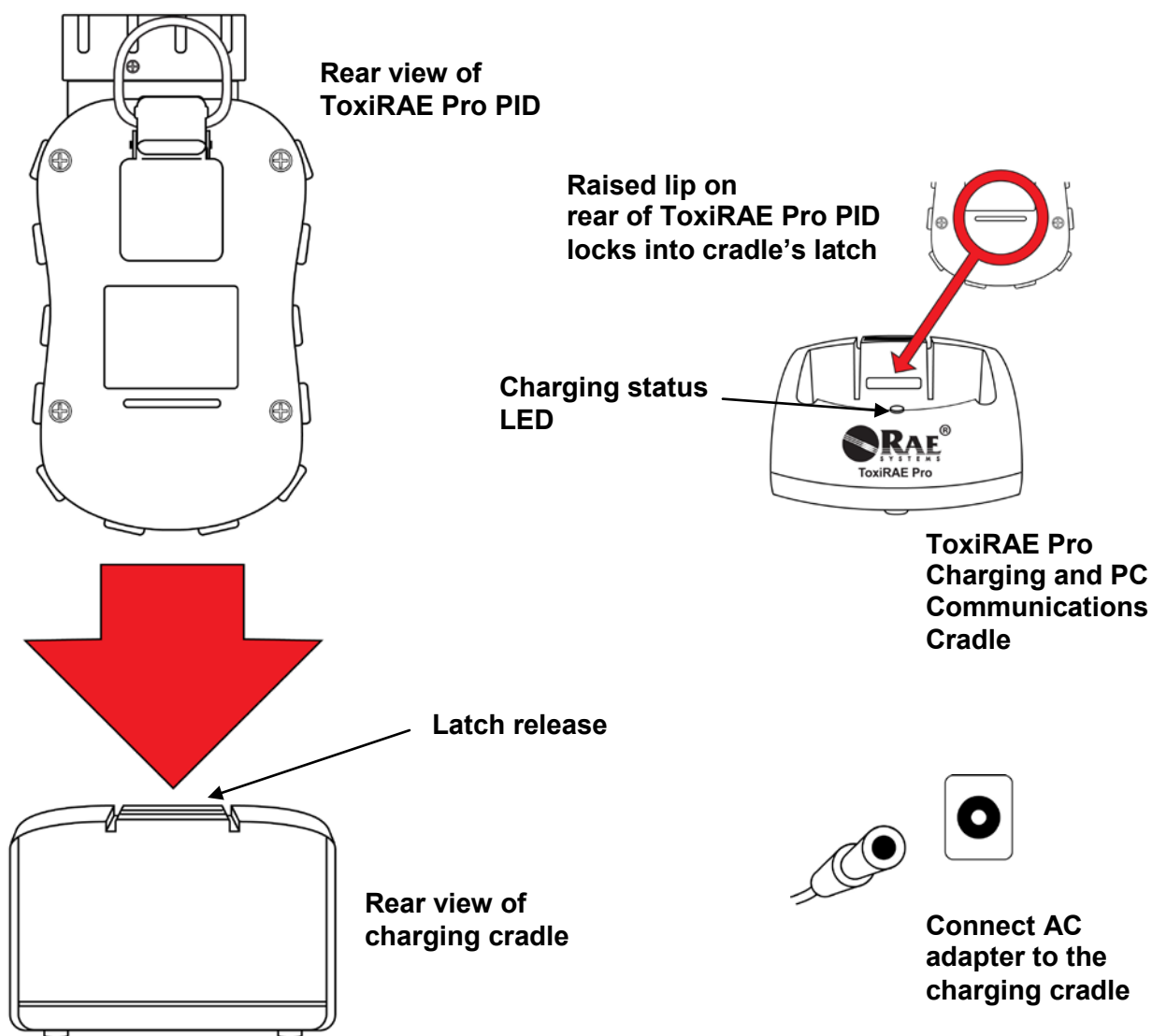
Along the top of most screens are status indicators that tell you whether a function is operating and/or its strength or level.

Icon	Function
	Wireless status: the radio is on
	Wireless status: the radio is off
	The instrument is not equipped with a radio (no icon)
	Wireless strength (0 to 5 bars), only when radio is turned on
	Datalogging status (shown when datalogging is on, blank when off)
	Battery status (three segments show battery charge level)
	Man Down alarm enabled
	Sensor calibration due
	Bump test due
	All sensors tested and calibrated tick mark (all sensors have been bump tested and calibrated; no sensor is overdue for a bump test or calibration according to the intervals configured on the instrument)

## ToxiRAE Pro PID User's Guide

### 5. Charging The ToxiRAE Pro PID

Always fully charge the battery before using the ToxiRAE Pro PID. The ToxiRAE Pro PID's Li-ion battery is charged by placing the ToxiRAE Pro PID in its cradle. Contacts on the bottom of the ToxiRAE Pro PID meet the cradle's contact pins, transferring power.



**Note:** Before setting the ToxiRAE Pro PID into its charging cradle, visually inspect the contacts to make sure they are clean. If they are not, wipe them with a soft, dry cloth. Do not use solvents or cleaners.

## ToxiRAE Pro PID User's Guide

Follow this procedure to charge the ToxiRAE Pro PID (the procedure is applicable to the instrument with or without the rubber boot installed):

1. Plug the AC/DC adapter into the ToxiRAE Pro PID's cradle.
2. Plug the AC/DC adapter into the wall outlet.
3. Place the ToxiRAE Pro PID into the cradle and press down until it is locked in place.

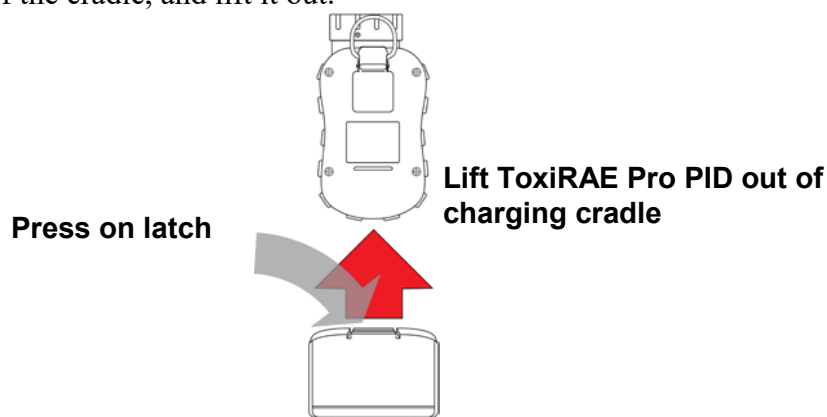
The ToxiRAE Pro PID begins charging automatically. The LED in the cradle should glow red to indicate charging. When charging is complete, the LED in the cradle glows green.

### **WARNING!**

**To reduce the risk of ignition of hazardous atmospheres, recharge the instrument only in areas known to be non-hazardous. Remove and replace batteries only in areas known to be non-hazardous.**

### **5.1. Removing The ToxiRAE Pro PID From The Charging Cradle**

To remove the ToxiRAE Pro PID from its charging cradle, press down on the latch release on the back of the charging cradle while slightly tilting the ToxiRAE Pro PID toward the front of the cradle, and lift it out.



### **5.2. Low Voltage Shutoff**

When the battery's charge falls below the shutoff voltage, the ToxiRAE Pro PID then turns itself off. Recharge the battery by placing the ToxiRAE Pro PID in its cradle (the cradle should be connected to the AC adapter).

## ToxiRAE Pro PID User's Guide

### 6. Turning The ToxiRAE Pro PID On

To turn the ToxiRAE Pro PID on, press and hold [MODE] for 3 seconds.

**Caution:** The alarm buzzer is very loud. During startup, you can mute most of the sound by holding a finger over the alarm buzzer port.

**Note:** Never put tape over the alarm buzzer port to permanently mute it or otherwise limit the loudness of the buzzer.

1. When the ToxiRAE Pro PID turns on, the buzzer, vibration alarm, and LEDs are tested. The firmware version is shown in the display (for example, “V1.00” indicates firmware version 1.00).
2. A battery test is performed. If the battery has sufficient charge, then the next step is a self test of the system.

**Note:** If the battery is almost fully discharged, the message “Battery too low! Needs charging. Powering off!” shows in the display and the ToxiRAE Pro PID shuts off. You must charge the battery before you can use the instrument.

3. Self-testing is performed by the ToxiRAE Pro PID.

**Note:** If one of the following error messages is displayed, shut off the ToxiRAE Pro PID by pressing [MODE]:

- Sensor error!
- Wrong sensor!

If any of the following error messages occurs, you can either shut off the instrument by pressing [MODE], or continue to the next startup test by pressing [Y/+]:

- No fan or fan error!
- Real time clock error!
- Memory error!
- Sensor changed!
- Failed to turn on lamp!

For any of these error types, try restarting the instrument. If the error message appears again after five more attempts to restart the instrument, consult the distributor from whom the instrument was purchased for technical support.

## ToxiRAE Pro PID User's Guide

4. After self-testing, two start-up options are available for the ToxiRAE Pro PID: Normal and Fast Start-up. The following information is displayed in sequence under Normal Start-up and skipped under Fast Start-up:
  - Sensor type
  - Sensor serial number
  - Date, time, and temperature
  - Calibration gas
  - Last calibration date
  - Measurement gas
  - Correction factor
  - User mode
  - Battery type, voltage, and shutoff voltage
  - Alarm mode
  - Buzzer enabled/disabled status
  - Light enabled/disabled status
  - Vibration alarm enabled/disabled status
  - Alarm settings for High, Low, STEL, and TWA
  - Datalog type and interval
5. Once the startup process is complete, a sensor warm-up screen is shown (with countdown, if necessary). Then the main measurement screen is shown. The type of monitored hazard is displayed, with current reading. The ToxiRAE Pro PID is now ready for use.

## 7. Turning The ToxiRAE Pro PID Off

Press and hold [MODE]. In 2 seconds, a 5-second countdown to shutoff begins, accompanied by one buzzer beep per second. You must hold your finger on the key for the entire shutoff process. If you remove your finger from the key during the countdown, the shutoff operation is canceled and the ToxiRAE Pro PID continues normal operation.

When you see "Unit Off," release your finger from the [MODE] key. The ToxiRAE Pro PID is now off.

## 8. Testing The Alarms (Manually)

Under normal non-alarm conditions, the buzzer, vibration alarm, and LEDs can be tested at any time by pressing and holding [Y/+].

**Important!** If any of the alarms does not respond to this test, check the Alarm Settings. It is possible that any or all of the alarms have been turned off. If all the alarms are turned on, but one or more of them (buzzer, LED lights, or vibration alarm) does not respond to this test, do not use the instrument; contact your RAE Systems distributor for technical support.

## ToxiRAE Pro PID User's Guide

### 9. Low Battery Warnings

If, during operation, the battery's charge is low, the battery icon in the display screen turns empty and blinks once every second. At the same time, the following notifications occur every minute: the buzzer beeps and LEDs blink once, followed by a vibration and a screen message "Battery low! Shut off in X minutes." The countdown to shutoff starts 10 minutes prior to automatic shutoff.

### 10. Dead Battery Warning & Shutoff

If you turn on the ToxiRAE Pro PID and the battery's charge is below its lowest threshold, the display shows this message:

Battery too low!  
Needs charging.  
Powering off!

It then automatically shuts off. You must charge the ToxiRAE Pro PID's battery before you can continue to use this instrument.

**Important!** Do not operate the ToxiRAE Pro PID again until its battery has been charged.

#### **WARNING!**

**To reduce the risk of ignition of hazardous atmospheres, charge the battery only in areas known to be non-hazardous.**

## 11. Operating The ToxiRAE Pro PID

### 11.1. Overview

The ToxiRAE Pro PID has two operational modes:

- **Normal** — see page 15 for detailed instructions.
- **Diagnostic** — see page 48 for detailed instructions.

**The following is an overview of the two modes:**

**Normal Mode** is the default mode. It is accessed when you turn on the ToxiRAE Pro PID. Two sub-modes are available: Basic User and Advanced User. In Basic User, some restrictions are applied, including password protection that guards against entering Programming Mode by unauthorized personnel. In Advanced, there are no such access restrictions (you do not need a password), and it provides the indications and data you need most for typical monitoring applications.

**Diagnostic Mode** is primarily intended for technicians to use during troubleshooting, although it also offers access to a few changeable parameters that you may rarely (if ever) need to change. A password is required to enter Diagnostic Mode (the password is the same as (and automatically kept in sync with) the one used to enter Programming Mode). The default password is 0000. To enter Diagnostic Mode, power the instrument off and then turn it back on by pressing and holding both the buttons. In Diagnostic Mode, ToxiRAE Pro PID displays readings in raw counts instead of units such as parts per million (ppm).

It is not possible to switch to Programming from Diagnostic Mode without turning off the instrument first and then restarting it in the desired mode.

#### 11.1.1. Normal Mode

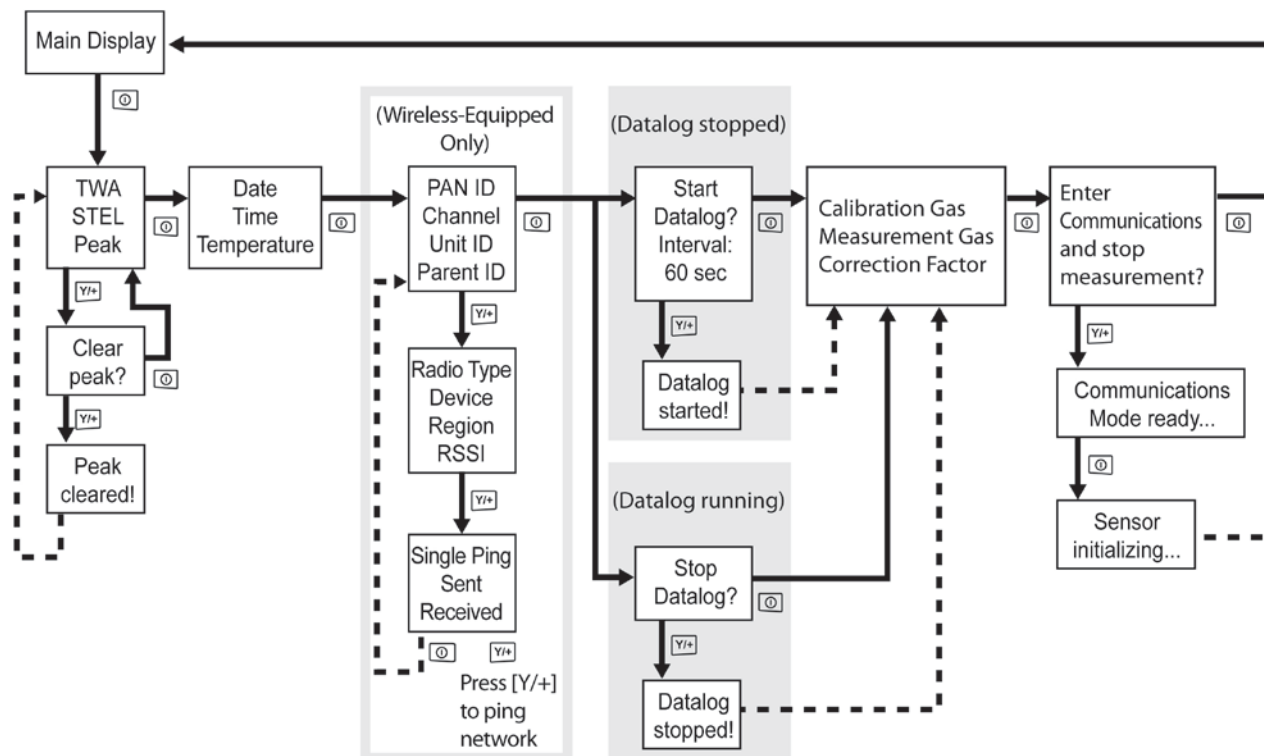
Normal Mode is the default mode of the ToxiRAE Pro PID when it is turned on. The selected sub-mode (Basic or Advanced) determines the number of screens that are accessible.



# ToxiRAE Pro PID User's Guide

## 11.1.2. Basic User Mode

When the ToxiRAE Pro PID is in Basic User Mode, pressing [MODE] allows you to step through the screens in the following fashion:



**Note:** The gray boxes indicate the datalog functions when datalogging is in Manual mode. When datalogging is in Automatic mode, these screens do not appear. Refer to page 28 for information on selecting Automatic or Manual datalogging.

# ToxiRAE Pro PID User's Guide

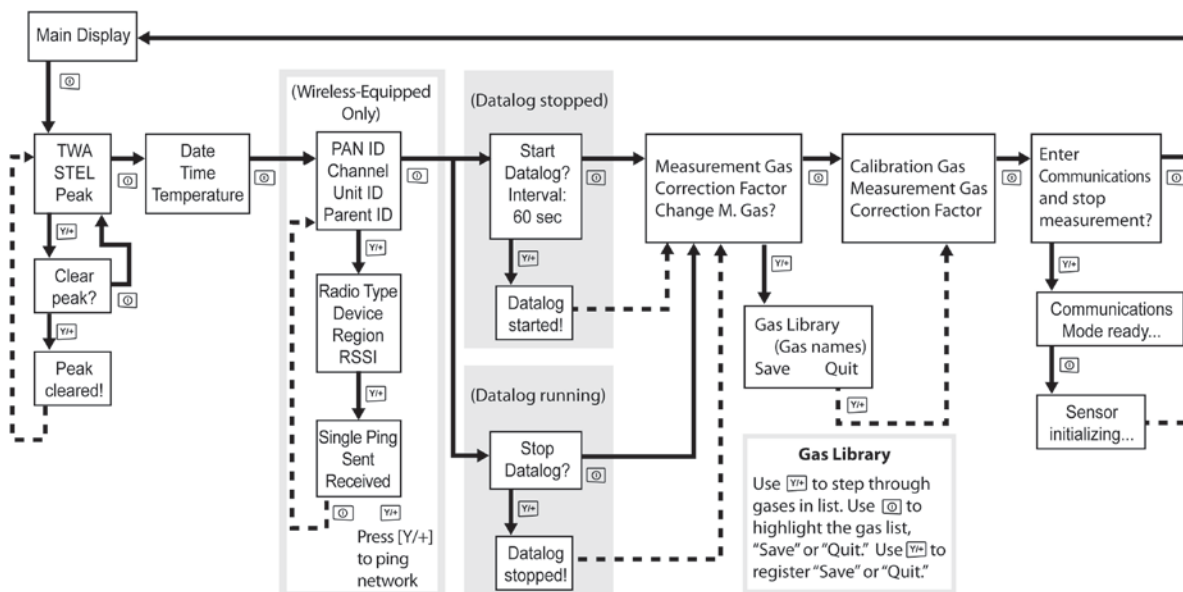
## 11.1.3. Advanced User Mode

**Note:** To enter Advanced User mode from Basic User mode, you must enter Programming mode on an instrument that is running in Basic User mode by simultaneously pressing and holding both the buttons for 3 seconds and supply a password.

To exit Programming Menu and return to the measurement screen (in Advanced User mode), press the [MODE] button repeatedly to highlight the Exit icon in Programming Menu and press Y to exit to the measurement screen.

When the ToxiRAE Pro PID is in Advanced User mode, pressing [MODE] steps through the same screens, but with the addition of a screen that allows for selection of different measurement gases from the internal library. Also, once in Advanced User mode, you may enter Programming without using a password.

**Note:** In Advanced User Mode, you may select different measurement gases from the internal library.



**Note:** The gray box indicates the datalog functions when datalogging is in Manual mode. When datalogging is in Automatic mode, these screens do not appear. Refer to page 28 for information on selecting Automatic or Manual datalogging.

## 11.2. Navigation In Normal Mode

Step through the screens in Normal Mode by pressing [MODE]. Some screens allow actions on your part, such as clearing the data. In these instances, pressing [Y/+] performs the action.

## ToxiRAE Pro PID User's Guide

### 11.2.1. TWA, STEL, Peak

The first screen includes a readout for TWA, STEL, and Peak readings.

**TWA** The TWA (time-weighted average) reading is the average reading of the gas concentration times that the monitor has been on, prorated to an 8-hour period.

**STEL** Short Term Exposure Limit (STEL) data based on 15-minute STEL values, expressed in ppm or mg/m<sup>3</sup>. A STEL value is only displayed after the ToxiRAE Pro PID has been on for 15 minutes or longer. After exiting PC Communications mode, the STEL is reset.

**Peak** The Peak value tells you the highest reading for the sensor since the ToxiRAE Pro PID was turned on. Press [Y/+] twice to clear the Peak value.

**Note:** If you do not press a key within 1 minute, the display reverts to the normal reading.

Press [MODE] to advance from screen to screen.

### 11.2.2. Date, Time, And Temperature

The current Date is expressed as Month/Day/Year, with two digits for month and day, and four digits for the year. Below the date is the time, which is expressed as Hours/Minutes/Seconds, with two digits for each. The time is in 24-hour (military) format. Below the time is the internal temperature, which can be in degrees Fahrenheit or Celsius (settable in Programming Mode).

### 11.2.3. Wireless Settings

The current wireless settings are shown here. These include the PAN ID, Channel, and Unit ID, which are helpful when creating or troubleshooting networks. Parent ID data does not apply.

### 11.2.4. Calibration Gas, Measurement Gas, Correction Factor

This screen shows calibration gas (Cal. Gas), measurement gas (Meas. Gas), and correction factor (CF).

# ToxiRAE Pro PID User's Guide

## 11.2.5. Enter Communications and stop measurement?

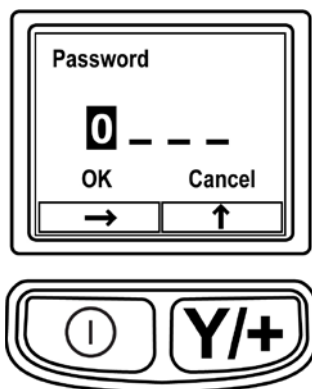
Before communicating with a PC running ProRAE Studio II Instrument Configuration and Data Management software (for downloading datalogs, configuring the instrument, or uploading new firmware), the ToxiRAE Pro PID must be set to communicate with the computer. Press [MODE] repeatedly until you reach the “Enter Communications and stop measurement?” screen. Then press [Y/+]. Measurement and datalogging are stopped, and the instrument is now ready to communicate with the PC.

## 11.3. Programming

You must provide a 4-digit password to enter Programming Mode, unless the ToxiRAE Pro PID is already running in Advanced User mode. The default password is 0000.

## 11.4. Entering Programming Mode

1. Press and hold [MODE] and [Y/+] simultaneously until the Password screen appears.



2. Input the 4-digit password:

- Press [Y/+] repeatedly to select a desired number. Numbers increase from 0 to 9. Once 9 is reached, pressing [Y/+] again "wraps" around back to 0.
- Step from digit to digit using [MODE].
- When you are done, continue pressing [MODE] until OK or Cancel is highlighted.
- Press [Y/+] to register the password (if OK is highlighted) or to exit without entering the password (if Cancel is selected).

If you make a mistake, you can cycle through the digits by pressing [MODE] repeatedly and then using [Y/+] to change the number in each position.

**Note:** The default password is 0000.

## ToxiRAE Pro PID User's Guide

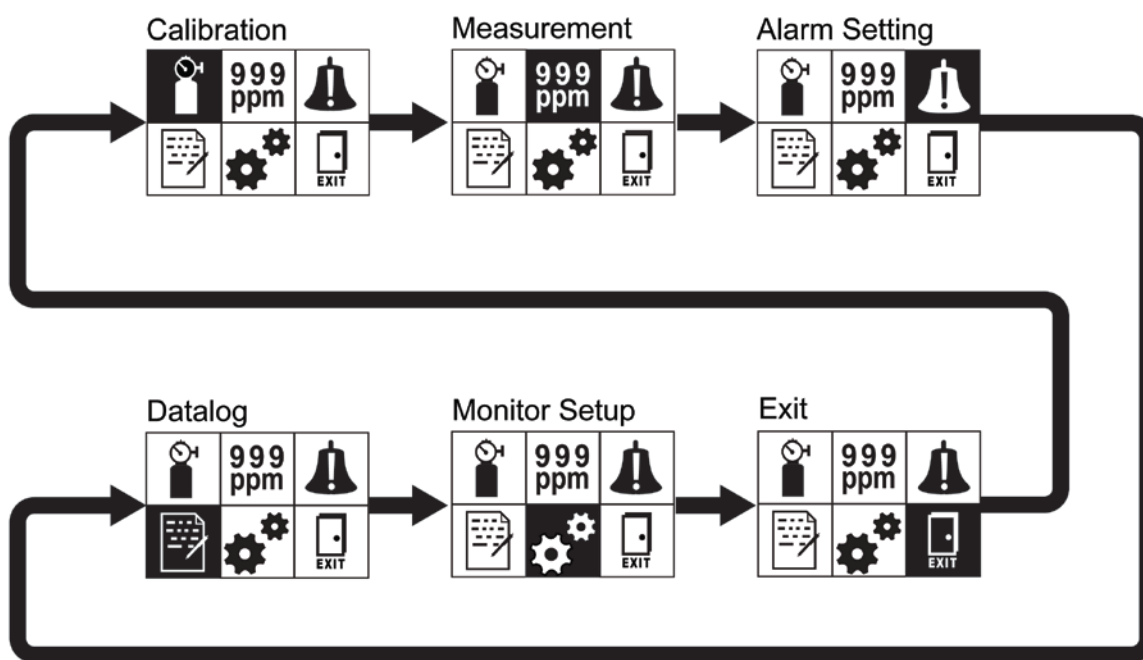
When you have successfully entered Programming Mode, the following screen appears:

### Calibration



**Note:** The password can only be changed by connecting the instrument to a PC running ProRAE Studio II software. Follow the instructions in ProRAE Studio II to change it.

The Calibration icon is highlighted first by default, but you can press [MODE] to step from one programming menu item to the next, with the name of the menu shown at the top of the display and the corresponding icon highlighted. As you repeatedly press [MODE], the selection moves from left to right, and the following screens appear in sequence:



**Note:** When you reach Exit and press [MODE], the menu cycles back to Calibration.

To exit the Programming Menu, highlight Exit by pressing the [MODE] button, and press the [Y/+] key.

## ToxiRAE Pro PID User's Guide

### 11.4.1. Navigating Programming Menus

Navigating through the Programming menus is easy and consistent, using a single interface format of a “forward arrow” and “Select,” controlled by the [MODE] key and [Y/+] key, respectively.


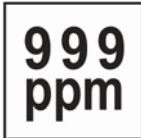



In the submenus, the functions of a “down arrow” and “Select” are controlled by the [MODE] key and [Y/+] key, respectively.

Also in submenus, the functions of the keys may correspond to the instruction directly above each key. Therefore, if it says “OK” above the [MODE] key, pressing [MODE] selects “OK.” When setting numerical data, the [MODE] key typically selects which digit is highlighted, while each press of [Y/+] increases the digit by 1.

### 11.5. Programming Menus

Programming allows anyone with the password to change the instrument's settings, calibrate the instrument, enter user information, etc. Programming has five menus. Each menu includes several submenus to perform additional programming functions.

This table shows the menus (and their icons) and submenus:

				
<b>Calibration</b>	<b>Measurement</b>	<b>Alarm Setting</b>	<b>Datalog</b>	<b>Monitor Setup</b>
Zero Calibration	Meas. Gas	High Alarm	Clear Datalog	Wireless
Span Calibration	Meas. Unit	Low Alarm	Interval	Site ID
		STEL Alarm	Data Selection	User ID
		TWA Alarm	Datalog Type	User Mode
		Alarm Mode		Date
		Buzzer & Light		Time
		Man Down Alarm		Temp. Unit
				Language
				Zero At Start
				LCD Contrast

**Note:** There is also an “Exit” icon. It has only one function. When you select it, the instrument exits Programming Mode, updates the settings, and returns to monitoring.

## **ToxiRAE Pro PID User's Guide**

Once you enter Programming, the LCD displays the first menu, Calibration. Each subsequent menu is accessed by pressing [MODE] repeatedly until the desired menu is displayed. To enter a submenu of a menu, press [Y/+].

### **11.5.1. Calibration**

Two types of calibration are available: Zero (fresh air) and Span.

In the Calibration submenu, select Zero or Span Calibration by pressing [MODE]. Once your choice is highlighted, press [Y/+].

#### **Zero Calib**

The procedure for performing a zero calibration is covered on page 36.

# ToxiRAE Pro PID User's Guide

## Span Calib

The procedure for performing a basic span calibration is covered on page 46.

## Exit

Press [Y/+] to exit. Calibration is exited, and Measurement is highlighted in the Programming Menu screen.

## 11.5.2. Measurement

The submenus for Measurement are Measurement Gas and Measurement Unit.

### Meas Gas

Measurement gases are organized in a list called Gas Library:

The Gas Library consists of 190 compounds found in RAE Systems' Technical Note TN-106 (available online at [www.raesystems.com](http://www.raesystems.com)).

1. Scroll through the Gas Library by pressing [Y/+] until you find the gas you want as your measurement gas.
2. When you are on the gas of your choice, press [MODE] to highlight "Save."
3. To save your choice, press [Y/+] . Otherwise, press [MODE] to highlight "Quit," followed by [Y/+] ; the newly selected gas will not be saved.

### Meas Unit

Standard available measurement units include:

Abbreviation	Unit
ppm	parts per million
mg/m3	milligrams per cubic meter

1. Choose between the two measurement units by pressing [MODE].
2. If you switch to a different measurement unit, press [Y/+] to select the new choice. Press [MODE] until "Exit" is highlighted.
3. Press [Y/+] to save your choice and exit.

## Exit

Press [Y/+] to exit. Measurement is exited, and Alarm Setting is highlighted in the Programming Menu screen.



# ToxiRAE Pro PID User's Guide

## 11.5.3. Alarm Setting

### High Alarm

Set the High Alarm as follows:

1. In the High Alarm submenu, press [Y/+] repeatedly to select a desired number. Numbers increase from 0 to 9. Once 9 is reached, pressing [Y/+] again “wraps” around back to 0.
2. Press [MODE] to move to the next digit.
3. When you are satisfied with the number, press [MODE] until “OK” is highlighted.
4. To save the new value, press [Y/+]. The value is saved, and the menu advances to Low Alarm.

To exit without saving the new value:

1. Press [MODE] to advance to Cancel.
2. Press [Y/+] to exit the High Alarm submenu and advance to the Low Alarm submenu.

### Low Alarm

Set the Low Alarm as follows:

1. In the Low Alarm submenu, press [Y/+] repeatedly to select a desired number. Numbers increase from 0 to 9. Once 9 is reached, pressing [Y/+] again “wraps” around back to 0.
2. Press [MODE] to move to the next digit.
3. When you are satisfied with the number, press [MODE] until “OK” is highlighted.
4. To save the new value, press [Y/+]. The value is saved, and the menu advances to STEL Alarm.

To exit without saving the new value:

1. Press [MODE] to advance to Cancel.
2. Press [Y/+] to exit the Low Alarm submenu and advance to STEL Alarm submenu.

### STEL Alarm

Set the STEL Alarm as follows:

1. In the STEL Alarm submenu, press [Y/+] repeatedly to select a desired number. Numbers increase from 0 to 9. Once 9 is reached, pressing [Y/+] again “wraps” around back to 0.
2. Press [MODE] to move to the next digit.
3. When you are satisfied with the number, press [MODE] several times until “OK” is highlighted.

## ToxiRAE Pro PID User's Guide

4. To save the new value, press [Y/+]. The value is saved, and the menu advances to TWA Alarm.

To exit without saving the new value:

1. Press [MODE] to advance to Cancel.
2. Press [Y/+] to exit the STEL Alarm submenu and advance to the TWA Alarm submenu.

### TWA

Set the TWA Alarm as follows:

1. In the TWA Alarm submenu, press [Y/+] repeatedly to select a desired number. Numbers increase from 0 to 9. Once 9 is reached, pressing [Y/+] again “wraps” around back to 0.
2. Press [MODE] to move to the next digit.
3. When you are satisfied with the number, press [MODE] until “OK” is highlighted.
4. To save the new value, press [Y/+]. The value is saved, and the menu advances to Alarm Mode.

To exit without saving the new value:

1. Press [MODE] to advance to Cancel.
2. Press [Y/+] to exit the TWA Alarm submenu and advance to the Alarm Mode submenu.

### Alarm Mode

There are two selectable alarm types:

**Auto Reset** When an alarm is triggered and after the alarm condition is no longer present, the alarm stops and resets by itself.

**Latch** When the alarm is triggered, it will not cease until you manually turn it off.

The latched setting only controls alarms for High Alarm and Low Alarm, not the STEL or TWA alarms.

**Note:** To clear an alarm when the instrument is set to “Latched,” press [Y/+] when the main (measurement) display is shown.

1. Press [MODE] to step from one alarm type to the other.
2. Press [Y/+] to select an alarm type.
3. When you have completed your selection, press [MODE] until “Exit” is highlighted. Then press [Y/+] to save the change and exit to “Buzzer and Light.”

# ToxiRAE Pro PID User's Guide

## Buzzer & Light

The buzzer, light, and vibration alarms can be programmed so that any combination, all, or none of them are activated when the ToxiRAE Pro PID goes into alarm.

**Important!** If you program the ToxiRAE Pro PID so that no alarms are activated in an alarm condition, you may put yourself or your workers at risk of being exposed to a hazardous atmosphere and being unaware of it, as the indication of a dangerous condition will be limited to the concentration shown in the display and the name of the type of alarm flashing on the display.

1. Choose an alarm combination setting by pressing [MODE] until your choice is highlighted.
2. Press [Y/+] to select it.
3. Press [MODE] repeatedly until "Exit" is highlighted.
4. Press [Y/+] to register your selection and exit.

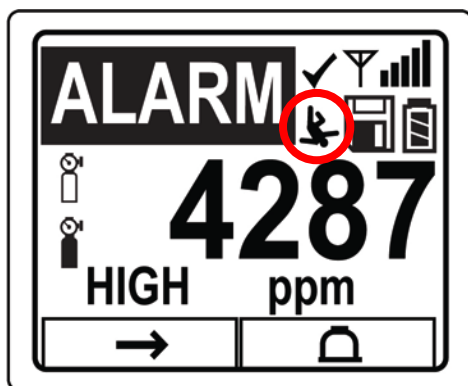
To exit without saving the new value:

1. Make sure your previous setting is selected.
2. Press [MODE] repeatedly to advance to Exit.
3. Press [Y/+] to exit.

## Man Down Alarm

The Man Down Alarm is a critical and potentially lifesaving safety feature of every ToxiRAE Pro PID. The Man Down Alarm is based on the premise that if the instrument is motionless when it is not supposed to be, something wrong may be happening to its user. If that is the case, the ToxiRAE Pro PID not only goes into alarm locally on the instrument, but also remotely, over the RAE Systems Dedicated Wireless Network, to notify people in the vicinity, as well as remote safety officers at a command center, that a person is down, so that help can be dispatched quickly.

Whenever the Man Down feature is on, the main screen displays a Man Down icon along the top to indicate it is active:



## ToxiRAE Pro PID User's Guide

When the Man Down feature is on and there is no gas alarm, the ToxiRAE Pro PID senses that it is motionless for the amount of time set in the “Motionless Time” parameter. If the instrument is not moved during that time, then a pre-alarm is activated to alert the user, and shows the “Are You OK?” screen. Pressing [Y/+] clears the alarm and returns the ToxiRAE Pro PID to its normal operation. Pressing [MODE] sets it into Man Down Alarm (and if wireless connectivity is enabled, a Man Down message is sent in real time to remote observers). If neither key is pressed, then after the countdown, it goes into Man Down Alarm (again sending a message to remote observers if wirelessly enabled).



Settings are available for:

- Off/On
- Motionless Time (time the instrument is motionless before initiating a pre-alarm)
- Sensitivity (set to low, medium, or high to compensate for ambient vibration or motion)
- Warning Time (countdown, in seconds, from pre-alarm to Man Down alarm)

When the Man Down alarm is activated, the buzzer sounds and LEDs flash continuously, and a countdown begins.

- If the ToxiRAE Pro PID's user presses [Y/+] for “Yes” in response to the “Are You OK?” question on the screen before the countdown reaches zero, the Man Down alarm stops and the main reading screen is displayed.
- If the person does not press [Y/+] for “Yes” in response to the “Are You OK?” question on the screen before the countdown reaches zero, the Man Down alarm is sounded and LEDs flash continuously.
- If the person presses [MODE] during the countdown, answering the “Are You OK?” question with “No,” the Man Down alarm starts.

If the ToxiRAE Pro PID's wireless connectivity is enabled, a Man Down message is also sent to remote observers.

### Exit (the Alarm Settings Submenu)

Press [Y/+] to exit the Alarm Settings submenu. Alarm Settings is exited, and Datalog is highlighted.

If you want to cycle through the Alarm Setting submenus, press [MODE] instead of [Y/+].

## ToxiRAE Pro PID User's Guide

### Exit (the Alarm Settings Submenu)

Press [Y/+] to exit the Alarm Settings submenu. Alarm Settings is exited, and Datalog is highlighted.

If you want to cycle through the Alarm Setting submenus, press [MODE] instead of [Y/+].

### 11.5.4. Datalog

#### Clear Datalog

This operation erases all data stored in the datalog.

**Note:** Once the datalog is cleared, the data cannot be recovered.

Press [Y/+] to clear the datalog. The display asks, “Are you sure?”

- Press [Y/+] if you want to clear the datalog. When it has been cleared, the display shows “Datalog Cleared!”
- Press [MODE] if you do not want to clear the datalog.

You are taken to the next submenu, Interval.

#### Interval

Intervals are shown in seconds. The default value is 60 seconds. The maximum interval is 3600 seconds, and the minimum is 1 second.

1. Press [Y/+] repeatedly to select a desired number. Numbers increase from 0 to 9. Once 9 is reached, pressing [Y/+] again “wraps” around back to 0.
2. Press [MODE] to advance to the next digit.
3. Repeat this process until the desired value is entered.

When you have completed your selections, press [MODE] repeatedly until “OK” is highlighted.

- To save the new value, press [Y/+].
- To cancel the changes and keep the settings as they were, press [MODE] to highlight “Cancel.” Then press [Y/+].

You are taken to the next submenu, Data Selection.

#### Data Selection

Data Selection allows you to select which types of data are recorded and made available when you download your datalog to a computer via ProRAE Studio II software.

You can choose any or all of four types of data (you must choose at least one):

## ToxiRAE Pro PID User's Guide

- Minimum
  - Average
  - Maximum
  - Real Time
1. Press [MODE] to step from one option to the next. The highlighter indicates your choice.
  2. Press [Y/+] to toggle your selection on or off (the check box indicates “on” with an “X”).
  3. When you have completed your selections, press [MODE] repeatedly until “Exit” is highlighted.
  4. Press [Y/+] to save the changes and exit.

### Datalog Type

The instrument has two datalog types:

<b>Auto</b>	Collects datalog information when the instrument is sampling until the datalog memory is full.
<b>Manual</b>	Datalogging occurs only when you manually initiate datalogging (see below for details).

1. Press [MODE] to step from one option to the next.
2. Press [Y/+] to make your selection (the dark circle in the “radio button” indicates that an option has been selected).
3. When you have completed your selection, press [MODE] until “Exit” is highlighted.
4. Press [Y/+] to save your selection and exit.

### About Manual Datalog

When the instrument is set to Manual Datalog, you can turn datalogging on and off from the main measurement display in the Normal Mode by pressing the [MODE] key three times.

- When you reach the screen that says “Start Datalog?” press [Y/+] to start it. You see “Datalog Started,” confirming that datalogging is now on.
- When you reach the screen that says “Stop Datalog?” press [Y/+] to stop it. You see “Datalog Stopped,” confirming that datalogging is now off.

### Exit (the Datalog Submenu)

Press [Y/+] to exit. Datalog is exited, and Monitor Setup is highlighted.

# ToxiRAE Pro PID User's Guide

## 11.5.5. Monitor Setup

### Wireless

There are seven Wireless parameters:

- Radio On/Off
- PAN ID
- Channel
- Join Network
- Interval
- Off Network Alarm
- Factory Reset

**Radio On/Off** This turns the wireless modem on or off.

**Note:** Turning the radio off does not change any of the settings. They are stored and ready for use the next time the wireless modem is turned on.

1. Choose an “On” or “Off” by pressing [MODE] until your choice is highlighted. (the dark circle in the “radio button” indicates that an option has been selected).
2. Press [Y/+] to select it.
3. Press [MODE] repeatedly until “Exit” is highlighted.
4. Press [Y/+] to register your selection and exit.

To exit without saving the new value:

1. Make sure your previous setting is selected.
2. Press [MODE] repeatedly to advance to Exit.
3. Press [Y/+] to exit.

**PAN ID** All units on a network must be programmed with the same Pan ID (Personal Network Identifier) to ensure communication compatibility.

**Important!** The allowed range for Pan ID numbers is 001 through 999.

Choose and enter a 3-digit PAN ID:

1. Press [Y/+] and the display shows the current PAN ID. Example: “866.” The left-most digit is highlighted.
2. Press [Y/+] repeatedly to select a desired number. Once 9 is reached, pressing [Y/+] again “wraps” around back to 0.
3. Press [MODE] to advance to the next digit.

Repeat this process until all eight characters of the new PAN ID are entered.

To save your new PAN ID and exit, press [MODE] repeatedly until “OK” is highlighted. Then press [Y/+] . It says, “Applying settings...” and then “Settings applied successfully!” to indicate they have been registered. The menu now advances automatically to “Channel.”

# ToxiRAE Pro PID User's Guide

**Channel** Every network operates on its own channel, between 01 and 10 (do not use 00). If you need to know the network's channel, check the EchoView Host's setting. **Note:** In Europe, only Channel 00 can be used, and it is preset (it cannot be changed).

Choose and enter a 2-digit Channel:

1. Press [Y/+] and the display shows the current Channel. Example: "10." The left-most digit is highlighted.
2. Press [Y/+] repeatedly to select a desired number. Once 9 is reached, pressing [Y/+] again "wraps" around back to 0.
3. Press [MODE] to advance to the next digit.

Repeat this process until all eight characters of the new Channel are entered.

To save your new Channel number and exit, press [MODE] repeatedly until "OK" is highlighted. Then press [Y/+]. It says, "Applying settings..." and then "Settings applied successfully!" to indicate they have been registered. The menu now advances automatically to "Join Network."

**Join Network** This screen is for joining an existing network. When you see this screen, press [Y/+] to join, or [MODE] to exit without joining.

While searching for the network, the message "Joining network..." is displayed.

If the network is found and successfully joined, then "Join network successful!" is displayed. Press [MODE] to acknowledge the connection and return to the Wireless menu.

If the network is not joined, the display shows: "Join network failed!" You have two options: Exit and Retry. If you want to retry, check that your network setting is correct (matches the EchoView Host) and that the EchoView Host is turned on and operating. Then press [Y/+] to retry.

**Interval** This sets the amount of time between data transmissions to the EchoView Host.

To change the Interval:

1. Press [MODE] to step from one option to the other. The highlighted option changes each time you press [MODE].
2. Press [Y/+] to make your selection (the dark circle in the "radio button" indicates the option has been selected).
3. When you have completed your selection, press [MODE] repeatedly until "Exit" is highlighted.
4. Press [Y/+] to save your selection, exit the Interval menu, and advance to "Off Netwk Alarm."

**Off Netwk Alarm** When this is enabled, the unit goes into alarm whenever an active network connection is lost. This informs you that connectivity has been broken between the ToxiRAE Pro and the EchoView Host.



## ToxiRAE Pro PID User's Guide

1. Choose “On” or “Off” by pressing [MODE] until your choice is highlighted. (the dark circle in the “radio button” indicates that an option has been selected).
2. Press [Y/+] to select it.
3. Press [MODE] repeatedly until “Exit” is highlighted.
4. Press [Y/+] to register your selection and exit.

To exit without saving the new value:

1. Make sure your previous setting is selected.
2. Press [MODE] repeatedly to advance to Exit.
3. Press [Y/+] to exit.

**Factory Reset**                      Selecting this resets the wireless settings to their original factory configurations.

**CAUTION!** A factory reset of the wireless settings deletes any customized settings and cannot be undone.

1. Press [Y/+] to select “Factory Reset.” You will see the message “Reset wireless settings?”
2. Press [Y/+] for “Yes” or [MODE] for “Exit.” If you select “Exit,” the ToxiRAE Pro exits without performing a factory reset.

### Exit (the Wireless Submenu)

Press [Y/+] to exit. Wireless is exited, and Monitor Setup is highlighted.

### Site ID

Choose and enter an 8-digit alphanumeric Site ID to uniquely identify the particular site where the instrument is to be used. This Site ID is included in the datalog report.

1. Press [Y/+] and the display shows the current Site ID. Example: “SITE0001.” The left-most digit is highlighted.
2. Press [Y/+] repeatedly to select a desired character. Letters increase from current value to Z followed by digits from 0 to 9. Once 9 is reached, pressing [Y/+] again “wraps” around to the letter A. For the last four characters that must be numerical, numbers increase from 0 to 9. Once 9 is reached, pressing [Y/+] again “wraps” around back to 0.

**Note:** The last four characters must be numerals.

3. Press [MODE] to advance to the next character.

Repeat this process until all eight characters of the new Site ID are entered.

To save your new Site ID and exit, press [MODE] repeatedly until “OK” is highlighted. Then press [Y/+].

### User ID

Enter an 8-digit alphanumeric User ID to uniquely identify a user. This User ID is included in the datalog report.

## ToxiRAE Pro PID User's Guide

1. Press [Y/+] and the display shows the current User ID. Example: "USER0000." The left-most character is highlighted.
2. Press [Y/+] repeatedly to select a desired character. Letters increase from current value to Z followed by digits from 0 to 9. Once 9 is reached, pressing [Y/+] again "wraps" around to the letter A.
3. Press [MODE] to advance to the next character.

Repeat this process until all eight characters of the new User ID are entered.

To save your new User ID and exit, press [MODE] repeatedly until "OK" is highlighted. Then press [Y/+].

### User Mode

The ToxiRAE Pro PID has two user modes:

**Basic** Basic users can only see and use a basic set of functions.

**Advanced** Advanced users can see all screens and take advantage of all available functions.

**Note:** The default value for User Mode is Basic.

To change the User Mode:

1. Press [MODE] to step from one option to the other. The highlighting changes each time you press [MODE].
2. Press [Y/+] to make your selection (the dark circle in the "radio button" indicates the option has been selected).
3. When you have completed your selection, press [MODE] repeatedly until "Exit" is highlighted.
4. Press [Y/+] to register your selection, exit the User Mode submenu and advance to Date.

### Date

The Date is expressed as Month/Day/Year, with two digits for each (MM/DD/YY).

The left-most digit is highlighted to indicate it is selected when you enter the Date submenu.

1. Press [Y/+] repeatedly to select a desired number. Numbers increase from 0 to 9. Once 9 is reached, pressing [Y/+] again "wraps" around back to 0.
2. Press [MODE] to advance to the next digit.  
Repeat this process until all six digits of the new date are entered.
3. Press [MODE] repeatedly until "OK" is highlighted.

## ToxiRAE Pro PID User's Guide

4. Press [Y/+] to save your selection and advance to Time.

**Note:** If you do not want to save the change, press [MODE] repeatedly until “Cancel” is highlighted. Press [Y/+] to exit to Time without saving the changes.

### Time

The Time is expressed as Hours/Minutes/Seconds, with two digits for each. The time is in 24-hour (military) format of HH:MM:SS.

The left-most digit is highlighted to indicate it is selected.

1. Press [Y/+] repeatedly to select a desired number. Numbers increase from 0 to 9. Once 9 is reached, pressing [Y/+] again “wraps” around back to 0.
2. Press [MODE] to advance to the next digit.  
Repeat this process until all six digits of the new time are entered.
3. Press [MODE] repeatedly until “OK” is highlighted.
4. Press [Y/+] to save your selection, exit the Time submenu and advance to Temp. Unit.

**Note:** If you do not want to save the change, press [MODE] until “Cancel” is highlighted. Press [Y/+] to exit to Temp. Unit without saving the changes.

### Temp. Unit

The display unit of the internal temperature sensor can be switched between Fahrenheit and Celsius.

To change the Temp. Unit:

1. Press [MODE] to step from one option to the other. The highlighted option changes each time you press [MODE].
2. Press [Y/+] to make your selection (the dark circle in the “radio button” indicates the option has been selected).
3. When you have completed your selection, press [MODE] repeatedly until “Exit” is highlighted.
4. Press [Y/+] to save your selection, exit the Temp. Unit menu, and advance to Language.

### Language

English is the default language, but other languages can also be selected for the instrument.

1. Press [MODE] to step from one option to the next. The highlighted option changes each time you press [MODE].
2. Press [Y/+] to make your selection (the dark circle in the “radio button” indicates this option has been selected).

## ToxiRAE Pro PID User's Guide

3. When you have completed your selection, press [MODE] repeatedly until “Exit” is highlighted.
4. Press [Y/+] to save your selection, exit the Language submenu, and advance to Zero At Start.

### Zero At Start

When Zero At Start is turned on, the instrument starts with a zero calibration every time it is turned on.

1. Press [MODE] to choose between “Off” and “On.”
2. Press [Y/+] to make your selection (the dark circle in the “radio button” indicates your selection).
3. When you have completed your selection, press [MODE] repeatedly until “Exit” is highlighted.
4. Press [Y/+] to save your selection, exit the Zero At Start submenu, and advance to LCD Contrast.

### LCD Contrast

The display's contrast can be increased or decreased from its default setting. You may not need to ever change the default setting, but sometimes you can optimize the display to suit extreme temperature and ambient brightness/darkness conditions.

1. Press and hold [Y/+] to select a desired level of contrast. The range is 1 to 100. Once 100 is reached, pressing [Y/+] again "wraps" around back to 1.
2. When you have completed your selection, press [MODE] repeatedly until “OK” is highlighted.
3. Press [Y/+] to save your selection, and exit the LCD Contrast.

**Note:** If you do not want to save the change, press [MODE] repeatedly until “Cancel” is highlighted. Press [Y/+] to exit without saving the changes.

### Exit (Monitor Setup Submenu)

Press [Y/+] to exit. Monitor Setup is exited. Exit (to exit Programming Mode) is highlighted.

### 11.6. Exit (Exit Programming Mode)

To exit Programming Mode and return to normal operation, press [MODE] until the Exit icon is highlighted. Press [Y/+] to exit. You will see “Updating Settings...” as changes are registered and the mode changes to normal operation.

# ToxiRAE Pro PID User's Guide

## 12. Policy Enforcement

The ToxiRAE Pro PID can be configured to enforce a facility/company's requirements that calibration and/or bump testing be performed at specified intervals, and to warn the user that calibration/bump testing is required. In addition, it can require calibration or bump testing and not allow normal operation of the instrument unless calibration or bump testing is performed.

If Policy Enforcement is enabled and if the instrument has been bump tested and calibrated in compliance with the policy settings, a check-mark icon is included along the top of the ToxiRAE Pro PID screen:



If Policy Enforcement is enabled, then after startup the ToxiRAE Pro PID displays a screen that informs the user that the instrument requires either a bump test or a calibration. If both are required, then they are shown in sequence.

### 12.1. Setting Policy Enforcement

You must use ProRAE Studio II to make changes to Policy Enforcement settings. The procedure differs, depending on whether you are using an AutoRAE 2 Cradle, a ToxiRAE Pro PID Travel Charger, or a ToxiRAE Pro PID Desktop Cradle.

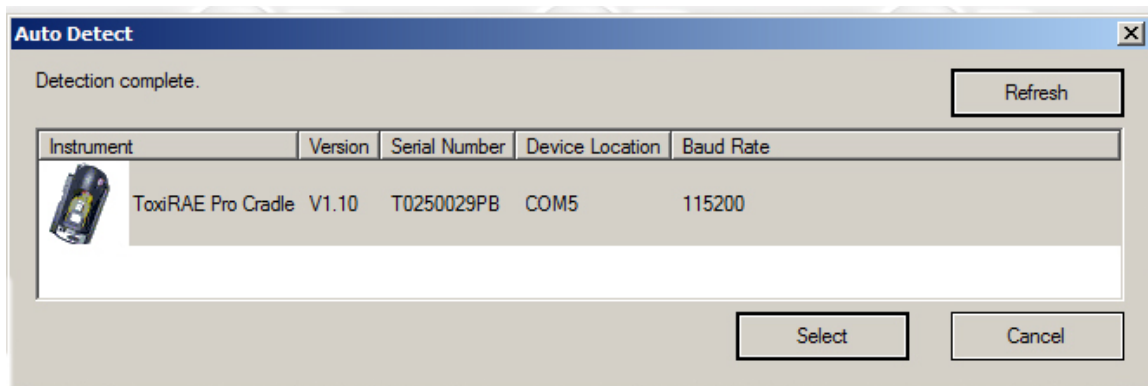
#### 12.1.1. AutoRAE 2 Cradle

**Note:** This procedure only works with a single AutoRAE 2 Cradle. It will not work with an AutoRAE 2 Controller.

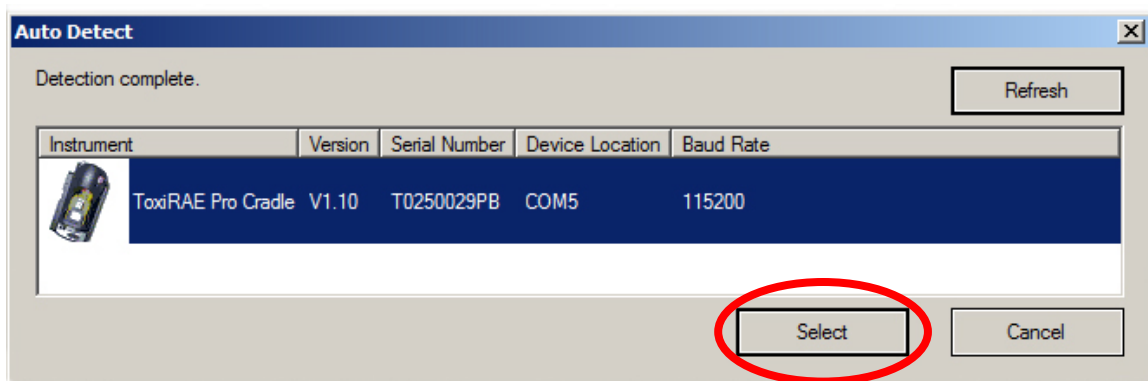
To program a ToxiRAE Pro PID via an AutoRAE 2 Cradle, you need ProRAE Studio II Instrument Configuration and Data Management Software, the AutoRAE 2 Cradle connected to a power source, and a USB PC communications cable.

1. Connect a USB cable between a PC with ProRAE Studio II and the AutoRAE 2 Cradle.
2. Apply power to the AutoRAE 2 Cradle.
3. Turn off the ToxiRAE Pro PID (or put the ToxiRAE Pro PID into PC Communications Mode) and set it in the cradle.
4. Start ProRAE Studio II software on the PC.
5. Select "Administrator" and input the password (the default is "rae").
6. Click "Detect the instruments automatically" (the magnifying glass icon with the letter "A" in it). After a few seconds, the AutoRAE 2 Cradle is found and it is shown, along with its serial number:

## ToxiRAE Pro PID User's Guide

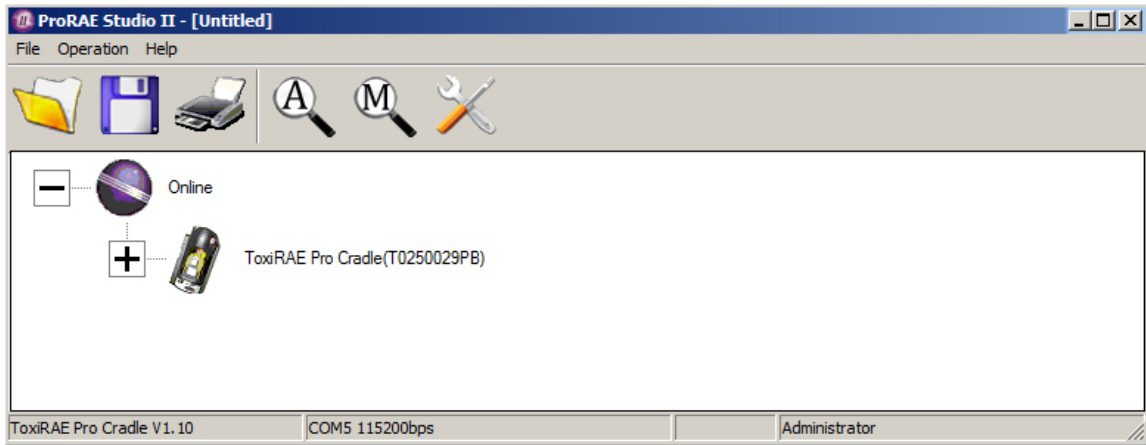


7. Click on the icon to highlight it, and then click "Select."

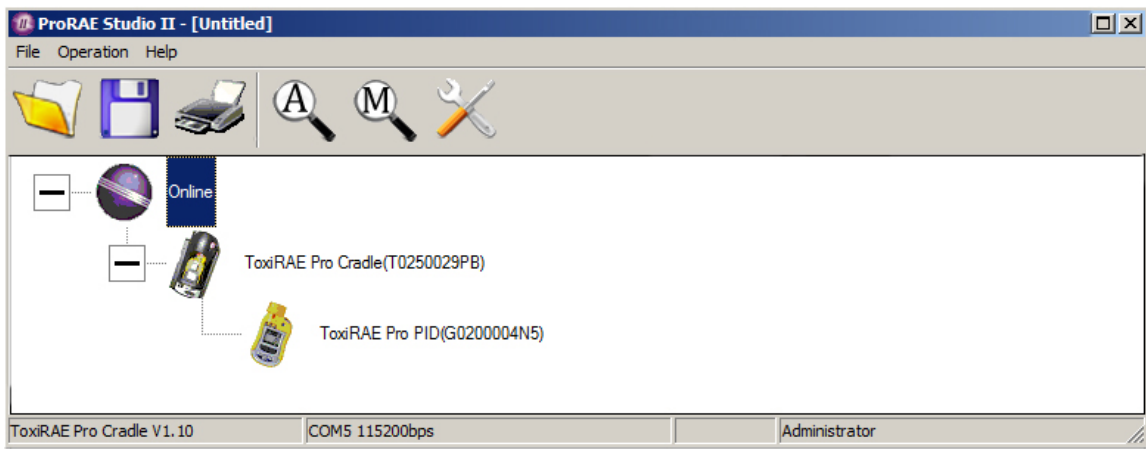


## ToxiRAE Pro PID User's Guide

8. In ProRAE Studio II, the AutoRAE 2 Cradle is shown, including its Serial Number, under “Online”:

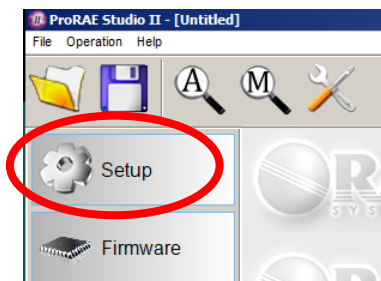


9. Expand the view to show the ToxiRAE Pro PID in the AutoRAE 2 Cradle by clicking the “+” to the left of the image of the AutoRAE 2 Cradle:



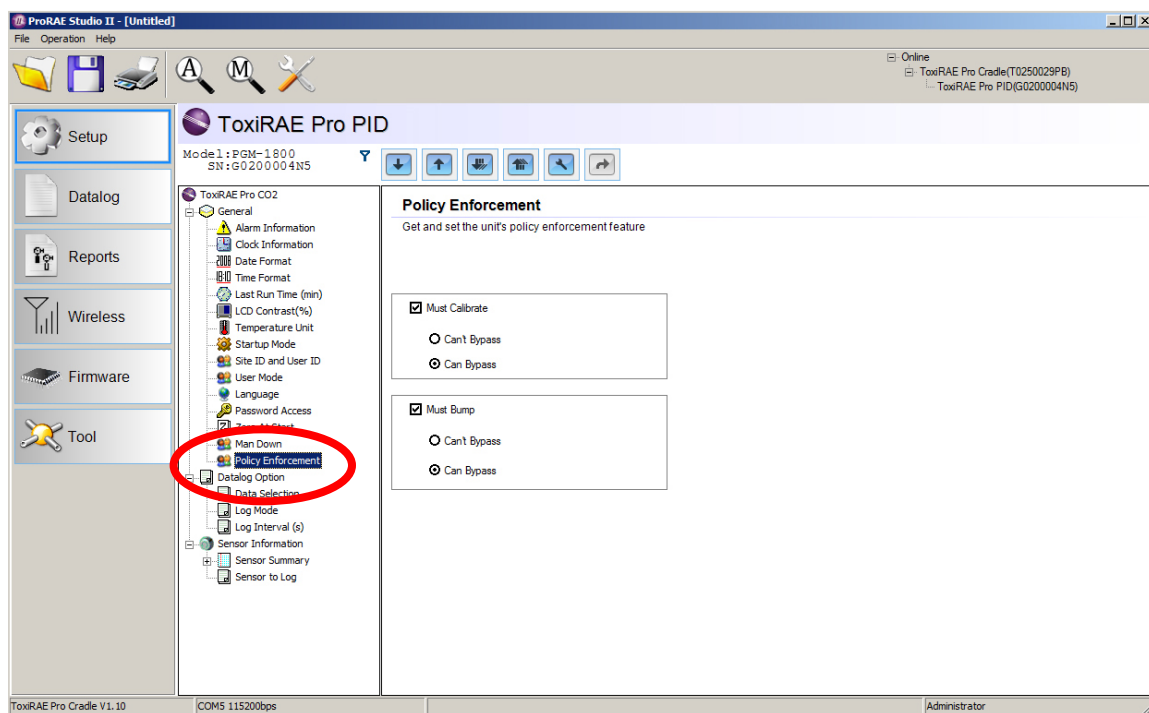
10. Double-click on the icon representing the ToxiRAE Pro PID.

11. Click “Setup.”



## ToxiRAE Pro PID User's Guide

12. In the menu that now appears on the left side, click “Policy Enforcement.” It is highlighted, and the Policy Enforcement pane is shown:



For “Must Calibrate” and “Must Bump,” you have the options of no enforcement or enforcement (including “Can’t Bypass,” and “Can Bypass”).

**Must Calibrate.** The user is prompted to calibrate the instrument when calibration is due (as set by the calibration interval). There are two programmable options:

- **Can’t Bypass.** Unless calibration is performed, the instrument cannot be used, and the only option is to turn off the instrument.
- **Can Bypass.** If calibration is due but the user does not want to perform a calibration, the instrument can still be used.

### Must Bump

- **Can’t Bypass.** Unless a bump test is performed, the instrument cannot be used, and the only option is to turn off the instrument.
- **Can Bypass.** If a bump test is due but the user does not want to perform one, the instrument can still be used.

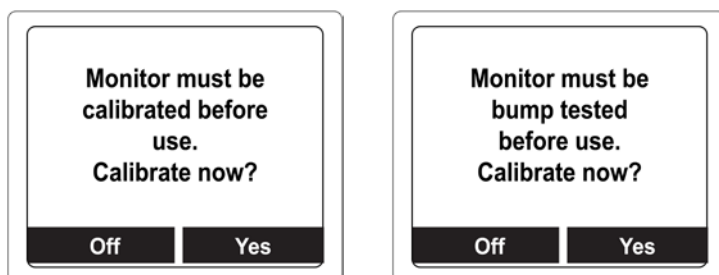


## ToxiRAE Pro PID User's Guide

These are the screens that are shown on a ToxiRAE Pro PID after startup if “Can Bypass” is selected:



If “Can’t Bypass” is selected, the display looks like this, and only allows the options of performing the test or shutting down:



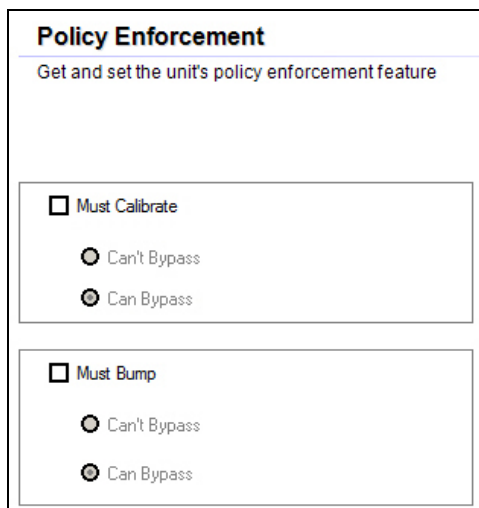
### 12.1.2. ToxiRAE Pro PID Desktop Cradle Or Travel Charger

Make sure the AC adapter is connected and that a USB cable is connected to a computer running ProRAE Studio II.

1. Turn on the ToxiRAE Pro PID.
2. Hold down [MODE] and [Y/+] to enter Programming Mode.
3. Provide the password.
4. Press [MODE] until “Enter Communications Mode?” is displayed.
5. Press [Y/+] . The screen shows that it is ready by saying “Communications Mode ready...” It is now ready to communicate with the computer running ProRAE Studio II. If you want to exit, press [MODE].
6. Start ProRAE Studio II.
7. Select “Administrator.”
8. Input the password (the default is “rae”).
9. Click “OK.”
10. Click “A” (detects instruments automatically).
11. Click on the instrument’s icon when it appears to highlight it.
12. Click “Select.”
13. Click “Setup.”
14. Click “Policy Enforcement.”

## ToxiRAE Pro PID User's Guide

The Policy Enforcement pane is shown:



**Policy Enforcement**  
Get and set the unit's policy enforcement feature

☐ Must Calibrate

- ☐ Can't Bypass
- ☒ Can Bypass

☐ Must Bump

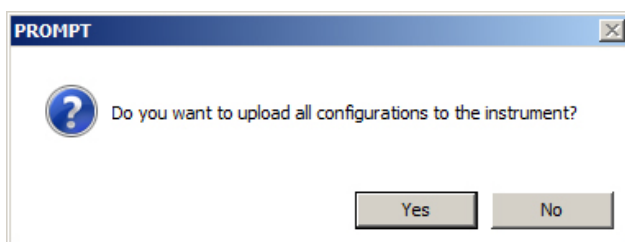
- ☐ Can't Bypass
- ☒ Can Bypass

You can select “Must Calibrate” and/or “Must Bump” and then set whether the user must perform the selected operation in order to use the instrument.

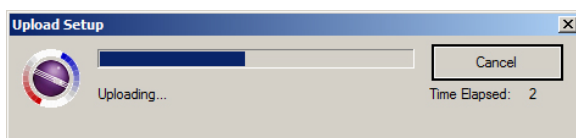
15. Once you have made your selections in ProRAE Studio II, you must upload the changes to the instrument. Click the icon labeled “Upload all settings to the instrument.”



16. A confirmation screen is shown. Click “Yes” to perform the upload, or “No” to abort.



Uploading takes a few seconds, and this progress bar is shown. You can abort the upload by clicking “Cancel.”



## ToxiRAE Pro PID User's Guide

17. Exit ProRAE Studio II.
18. Press [Y/+] on the ToxiRAE Pro PID to exit Communication Mode.

### 12.2. Deactivating Policy Enforcement

#### 12.2.1. AutoRAE 2 Cradle

To deactivate Policy Enforcement when using an AutoRAE 2 Cradle, follow the procedure for changing settings. See page 36 for details.

#### 12.2.2. ToxiRAE Pro PID Desktop Cradle Or Travel Charger

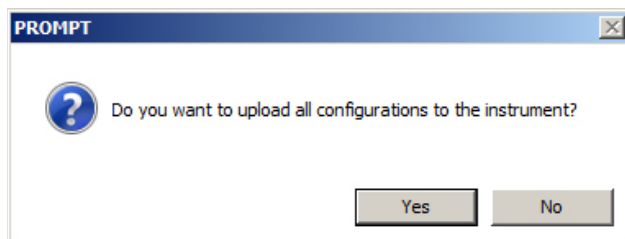
If the ToxiRAE Pro PID screen displays the message that it must be bump tested or calibrated, and if the option to bypass bump testing or calibration is not available, you should shut off the instrument and follow the procedure outlined here if you want to change the Policy Enforcement settings:

1. Use a USB cable to connect the ToxiRAE Pro PID in its Travel Charger or Desktop Cradle to a computer running ProRAE Studio II.
2. Enter Diagnostic Mode on the ToxiRAE Pro PID (with the instrument turned off, press and hold [Y/+] and [MODE] until it starts up).
3. After startup, enter the password when prompted (default is “0000”) and press [MODE].
4. Press [MODE] repeatedly until you see the “Enter Communications Mode?” screen.
5. Press [Y/+] to enter Communications Mode.
6. Start ProRAE Studio II.
7. Select “Administrator.”
8. Input the password (the default is “rae”).
9. Click “OK.”
10. Click “A” (detect instruments automatically).
11. Click on the instrument's icon when it appears.
12. Click “Select.”
13. Click “Setup.”
14. Click “Policy Enforcement.” The Policy Enforcement pane is shown.
15. Deselect Policy Enforcement features you do not wish to use.
16. Click “Upload all settings to the instrument.”

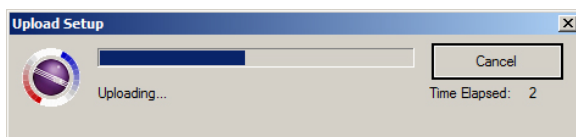


## ToxiRAE Pro PID User's Guide

17. When you see this confirmation. Click “Yes.”



Uploading will take a few seconds, and this progress bar is shown:



18. When the upload is done, exit ProRAE Studio II.

19. Press [Y/+] on the ToxiRAE Pro PID to exit Communication Mode.

## ToxiRAE Pro PID User's Guide

### 13. Bump Testing & Calibrating The ToxiRAE Pro PID

**Note:** Calibration intervals and bump test procedures may vary due to national legislation.

#### 13.1. Bump Testing & Calibrating With An AutoRAE 2™

Bump testing and calibrating a ToxiRAE Pro PID can be done with an AutoRAE 2 Automatic Test And Calibration Station. Follow all instructions in the AutoRAE 2 User's Guide for successful bump testing or calibration.

##### 13.1.1. Bump (Functional) Testing

With the ToxiRAE Pro PID in Normal Mode:

1. Connect the calibration gas cylinder, flow regulator, and calibration adapter to the ToxiRAE Pro PID and start the gas flow.
2. Make sure the unit goes into alarm and that the buzzer produces at least two beeps per second, the LED lights flash on and off, and the vibration alarm functions. The display backlight should illuminate and an alarm message should be shown in the display.
3. Turn off the gas flow.
4. Remove the calibration adapter.

**Note:** Bump testing and calibration can also be performed by using the RAE Systems AutoRAE 2 Automatic Test And Calibration Station. Refer to the AutoRAE 2 User's Guide for instructions.

#### 13.2. Calibration Adapter

The ToxiRAE Pro PID must be calibrated using a fixed-flow regulator with a flow rate between 0.5 and 1.0 liters per minute. The ToxiRAE Pro PID is supplied with a special calibration adapter that covers the gas fan inlet. If the local air has impurities that might interfere with zero (fresh air) calibration, the calibration adapter and a cylinder of clean zero air should be used.

##### 13.2.1. Connecting The Calibration Adapter

1. Place the Calibration Adapter on the top cap of the ToxiRAE Pro PID by pressing it into place.
2. Attach the hose from the regulator/calibration gas cylinder to the Calibration Adapter's inlet.

## ToxiRAE Pro PID User's Guide

**Caution!** After calibration is complete, remove the Calibration Adapter. When monitoring, never operate the ToxiRAE Pro PID with the Calibration Adapter attached. If the Calibration Adapter is attached during normal operation, inconsistent and lower-than-normal readings will occur because of decreased concentration of the gas being monitored.

### 13.2.2. Disconnecting The Calibration Adapter

After calibrating the ToxiRAE Pro PID, you must remove the Calibration Adapter by lifting it off the ToxiRAE Pro PID.

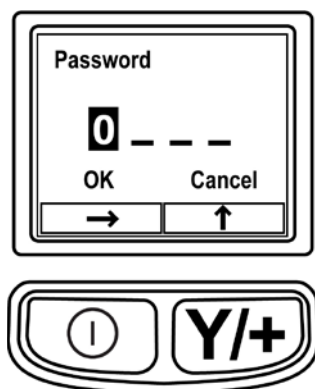
### 13.3. Zero Calibration

This operation sets the zero point of the sensor calibration curve for clean air. Expose the ToxiRAE Pro PID to a clean air source with 20.9% oxygen and without any organic, toxic, or combustible gas impurities. This “Zero Air” can come from a cylinder or clean ambient air.

**Note:** If you use a zero air cylinder, you must use the ToxiRAE Pro PID Calibration Adapter. Using a calibration adapter is not necessary for calibration in fresh air.

Turn on the ToxiRAE Pro PID. Once it has been through its startup, enter Programming Mode:

1. Press and hold [MODE] and [Y/+] until you see the Password screen.



2. Input the 4-digit password:

- Press [Y/+] repeatedly to select a desired number. Numbers increase from 0 to 9. Once 9 is reached, pressing [Y/+] again “wraps” around back to 0.
- Step from digit to digit using [MODE].
- When you are done, press [MODE] until OK or Cancel is highlighted.
- Press [Y/+] to register the password (if OK is highlighted) or to exit without entering the password (if Cancel is selected).

## ToxiRAE Pro PID User's Guide

If you make a mistake, you can cycle through the digits by pressing [MODE] and then using [Y/+] to change the number in each position.

**Note:** The default password is 0000.

If you do not know the password, do not enter anything. Just press [MODE] repeatedly to highlight OK, and then press [Y/+].

**Note:** If the ToxiRAE Pro PID is in Programming Mode and you do not press a key within 60 seconds, it exits Programming Mode and re-enters Normal Mode.

1. At the Calibration screen, press [Y/+].
2. "Zero Calib" is highlighted. Make sure the ToxiRAE Pro PID is in clean air. Otherwise attach a cylinder of zero gas to the Calibration Adapter installed on the instrument.
3. Press [Y/+]. The message "Apply zero gas..." is displayed.
4. Start the flow of the zero gas (if used) and press [Y/+] to start the zero calibration.
5. There is a 60-second countdown, during which time the screen shows the word "Zeroing..." and the countdown.
6. Upon completion, it says "Zeroing is done! Reading = 0.0ppm" along with the reading (it should be 0.0 ppm or very close to it).
7. "Span Calib" is highlighted.

**Note:** You can abort the zero calibration during its countdown by pressing the [MODE] key.

**Important!** If you used the Calibration Adapter and a zero air cylinder, you must remove the Calibration Adapter from the ToxiRAE Pro PID. If the Calibration Adapter is attached during normal operation, inconsistent and lower-than-normal readings will occur because of decreased concentration of the gas being monitored.

### 13.4. Span Calibration

This procedure determines the second point of the sensor calibration curve for the sensor.

To begin calibration, connect the calibration gas cylinder, flow regulator, and calibration adapter to the ToxiRAE Pro PID.

With the ToxiRAE Pro PID in Programming Mode, and with Span Calib highlighted, follow this procedure:

1. Press [Y/+]. The screen displays the current (or default) calibration gas and its concentration. For example:

Cal. Gas: Isobutylene  
Span=100ppm  
Change?

- Press [MODE] if you do not want to change it.

## ToxiRAE Pro PID User's Guide

- Press [Y/+] if you want to change it.

If you entered the Calibration Menu without supplying the correct password, or supplied the correct password but chose not to change the Cal.Gas, you will see a message like this:

Cal.Gas: Isobutylene  
Span=100ppm  
Apply gas...

2. Press [Y/+] to start calibration.
3. Press [MODE] if you want to quit without calibrating.

During calibration, the calibration gas name, its concentration, and the countdown are displayed. Depending upon the device alarm settings, the monitor may go into low and then high alarm once span calibration is complete, which is expected in response to the test gas.

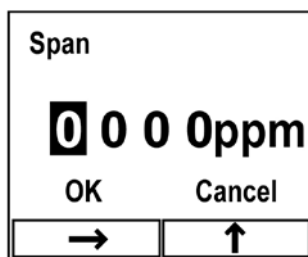
**Note:** You can abort span calibration during its countdown by pressing [MODE].

Upon completion, the screen “Span is done!” appears along with the reading (it should be within 10% of the span gas concentration).

**Important!** After calibration is complete, you must remove the Calibration Adapter from the ToxiRAE Pro PID. If the Calibration Adapter is attached during normal operation, inconsistent and lower-than-normal readings will occur because of decreased concentration of the gas being monitored.

### 13.4.1. Changing Span Gas Concentration

If you selected “Change” for span gas concentration, the following screen appears:



1. Press [Y/+] repeatedly to select a desired number. Numbers increase from 0 to 9. Once 9 is reached, pressing [Y/+] again “wraps” around back to 0.
2. Step from one digit to the next by pressing [MODE].
3. When you are done, press [MODE] until either “OK” or “Cancel” is selected. Press [Y/+] to register your selection (if “OK” is highlighted) or to exit without registering it (if “Cancel” is selected).



# ToxiRAE Pro PID User's Guide

## 14. Diagnostic Mode

In Diagnostic Mode, the ToxiRAE Pro PID provides raw counts for sensor, battery, and other readings. Most of these screens are useful only to service technicians. Therefore, if you require information on Diagnostic Mode, refer to the ToxiRAE Pro PID Service Guide.

The ToxiRAE Pro PID's Diagnostic Mode can only be accessed at startup time. In Diagnostic Mode, ToxiRAE Pro PID displays readings in raw counts instead of units such as parts per million (ppm).

### 14.1. Entering Diagnostic Mode

1. With the ToxiRAE Pro PID turned off, press and hold both [MODE] and [Y/+].
2. When the display turns on and the password screen appears, release the keys.
3. Enter the 4-digit password (the password is the same as the one for the Programming Mode):
  - Step from one position in the four-character string to the other by pressing [MODE].
  - Press [Y/+] repeatedly to select a desired number. Numbers increase from 0 to 9.
  - Once 9 is reached, pressing [Y/+] again “wraps” around back to 0.
4. When you are done, press [MODE] until either OK or Cancel is selected. Press [Y/+] to register the password (if “OK” is highlighted) or to exit without entering the password (if “Cancel” is selected).

### 14.2. Navigating Diagnostic Mode

Step through Diagnostic Mode by pressing [MODE].

### 14.3. Exiting Diagnostic Mode

1. Turn off the ToxiRAE Pro PID by pressing and holding [MODE]. There will be a standard shutoff countdown.
2. When the instrument shuts off, you will be alerted. Release your finger.

**Note:** The next time you start ToxiRAE Pro PID, hold only [MODE], and it will automatically start in Normal Mode.

## ToxiRAE Pro PID User's Guide

### 15. Alarm Signal Summary

Alarm types include:

Alarm Message/ Priority	Condition	Alarm Signal
	Super Alarm	4 beeps/flashes per second
(Man Down)	Man Down Alarm	3 beeps/flashes per second
(Man Down Warning)	Man Down Warning	2 beeps/flashes per second
LAMP	Lamp failure	3 beeps/flashes per second
MAX	Gas exceeds electronics' maximum range	3 beeps/flashes per second
OVER	Gas exceeds measurement range	3 beeps/flashes per second
HIGH	Gas exceeds "High Alarm" limit	3 beeps/flashes per second
LOW	Gas exceeds "Low Alarm" limit	2 beeps/flashes per second
NEG	Gas reading measures less than zero	1 beep/flash per second
STEL*	Gas exceeds "STEL" limit	1 Beep/flash per second
TWA*	Gas exceeds "TWA" limit	1 Beep/flash per second
CAL	Calibration failed, or needs calibration	1 beep/flash per second
Offline	Offline from network communications	1 beep/flash per second
Bat	Low battery	1 flash, 1 beep per minute plus battery icon flashes on display

The alarm priority is as follows (in the event of multiple simultaneous alarms):

Super Alarm > Man Down Alarm > Man Down Warning > Lamp > Fan > Max > Over > High > Low > Neg > STEL > TWA > Cal Failed > Bump Failed > Cal Required > Bump Required > Offline > Bat

### 16. Downloading Datalogs And Performing PC-Based Instrument Configuration and Firmware Upgrades

The ToxiRAE Pro PID communicates with a PC running ProRAE Studio II Instrument Configuration and Data Management software (version 1.03 or higher) to download datalogs, configure the instrument, or upload new firmware.

The ToxiRAE Pro PID must be connected to a PC through the supplied Charging / PC Communications Cradle and must be in the PC communications mode.

1. Make sure the Charging/PC Communications Cradle has power from its AC adapter (the LED on the front of the cradle should be illuminated).
2. Use the supplied PC Communications Cable (USB to mini-USB cable) to connect the Cradle to a PC.
3. Turn on the ToxiRAE Pro PID. Make sure it is running in Normal mode (with the main measurement screen with VOC reading showing).
4. Insert the ToxiRAE Pro PID in the cradle.
5. Activate the PC communications mode on the ToxiRAE Pro PID by pressing [MODE] repeatedly, starting from the main measurement screen until you reach the "Enter Communications Mode and stop measurement?" screen.
6. Press [Y/+]. Measurement and datalogging stop, and the instrument is now ready to communicate with the PC. The display now says "PC comm ready..."
7. Start up the ProRAE Studio II software, enter a password, and detect the instrument following the directions provided in the ProRAE Studio II User's Manual.
8. Follow the instructions in the ProRAE Studio II User's Manual to download the datalog, configure the instrument settings, or update the ToxiRAE Pro PID's firmware.
9. When you are done, press [MODE] to exit the PC communications mode on the ToxiRAE Pro PID. The screen displays "Sensor initializing," after which the instrument returns to operating in Normal mode.

# ToxiRAE Pro PID User's Guide

## 17. Maintenance



**Maintenance should be performed only by a qualified person who has proper training and fully understands the contents of this manual.**

**The following guidelines should be followed when changing the battery:**

1. Turn off the unit before changing the battery.
2. When replacing the battery, take note of its orientation. The connectors on the circuit board should go into the matching slots in the battery.

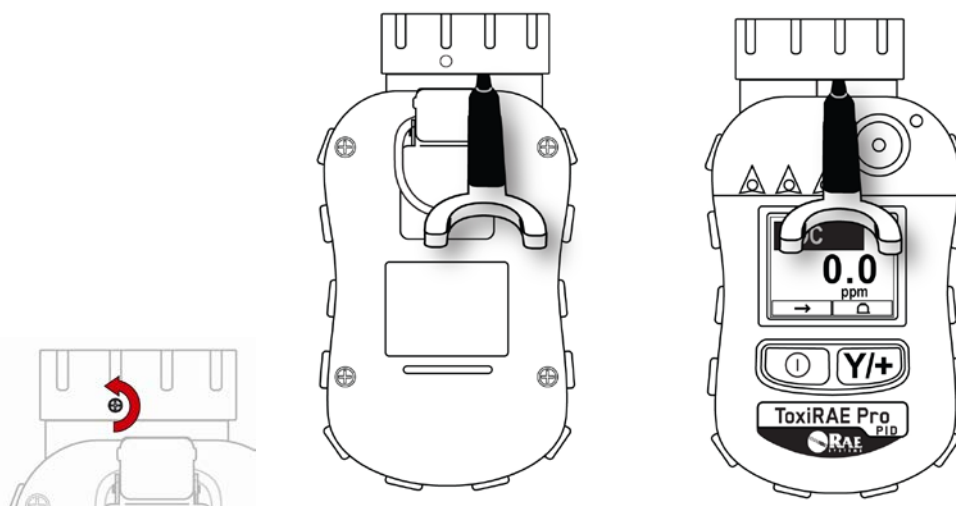
### **WARNING**

**To reduce the risk of ignition of hazardous atmospheres, replace the battery only in areas known to be non-hazardous.**

### 17.1. Replacing the ToxiRAE Pro PID Li-Ion Battery

**Caution:** Turn off the ToxiRAE Pro PID before removing or replacing the battery.

1. If the rubber boot is on the ToxiRAE Pro PID, remove it (refer to page 55 for details).
2. Place the ToxiRAE Pro PID face-down on a soft surface.
3. Use a Philips screwdriver to loosen the screw holding the top cap in place, and then carefully use the provided tool to pry up the top cap from the middle in the front and back and use your fingers to remove the top cap.

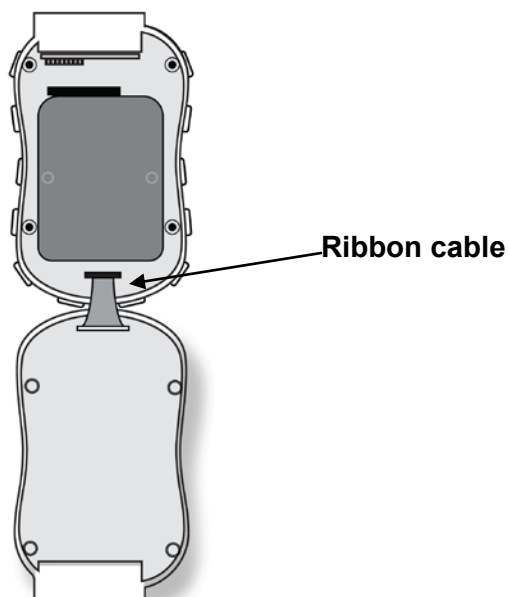


## ToxiRAE Pro PID User's Guide

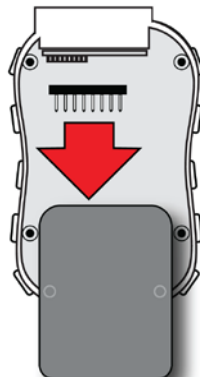
4. Remove the four screws on the back of the instrument by turning them counterclockwise.



5. Hold the ToxiRAE Pro PID down and separate the rear cover from the front by pulling from the top and tilting it open without disconnecting the ribbon cable connecting the two halves.

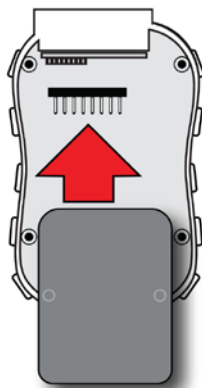


6. Carefully disconnect the battery from the battery connectors on the circuit board by pulling it toward the bottom of the instrument. Be careful not to damage the ribbon cable.

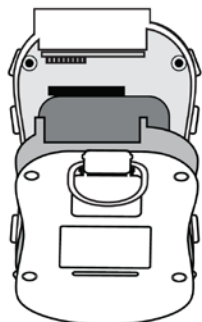


## ToxiRAE Pro PID User's Guide

7. Before installing a new battery, visually inspect the contact pins on the ToxiRAE Pro PID circuit board to make sure they are not bent. If they are, carefully straighten them before installing the battery. Install the new battery (part number G02-3004-000), making sure it is inserted fully. Make sure the battery connectors on the circuit board go all the way into the connector slots in the battery.

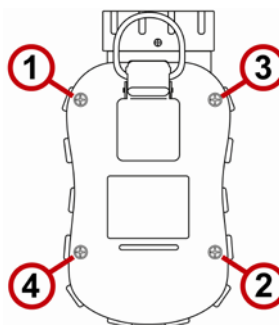
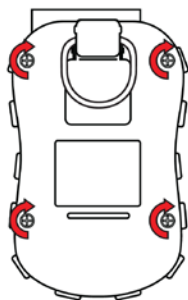


8. Inspect to make sure the ribbon connector is still connected, and plug it back in if it has come unplugged.
9. Place the cover over the compartment by tilting it up and then fitting it in place.



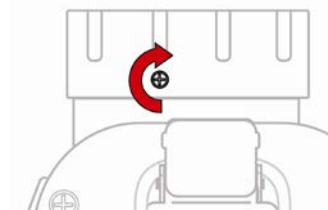
10. Tighten all four screws by turning them clockwise with a torque-limiting screwdriver (preferably an electric one). Tighten them in the numerical order shown here, to a torque rating of 3.54 to 4.43 lbf-in (4.08 to 5.10 kgf-cm).

**Note:** Incorrectly tightening the screws may compromise the instrument's IP rating.



## ToxiRAE Pro PID User's Guide

11. Replace the top cap and tighten the Philips screw.



**Important!** Charge the battery completely before using the ToxiRAE Pro PID, and check the calibration before placing the instrument in service.

### 17.2. Proper Battery Disposal



The Waste Electrical and Electronic Equipment (WEEE) directive (2002/96/EC) is intended to promote recycling of electrical and electronic equipment and their components at end of life. This symbol (crossed-out wheeled bin) indicates separate collection of waste electrical and electronic equipment in the EU countries. This product may contain one or more Nickel-metal hydride (NiMH), Lithium-ion, or Alkaline batteries. Specific battery information is given in this user guide. Batteries must be recycled or disposed of properly.

At the end of its life, this product must undergo separate collection and recycling from general or household waste. Please use the return and collection system available in your country for the disposal of this product.

### Sensor Specifications, Cross-Sensitivities, And Calibration Information

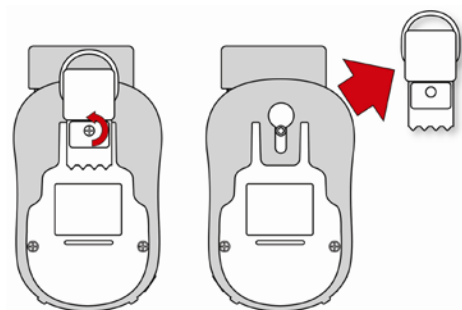
For information on sensor specifications, cross-sensitivities, and calibration information, refer to RAE Systems Technical Note TN-114: Sensor Specifications And Cross-Sensitivities (available for free download from [www.raesystems.com](http://www.raesystems.com)). All specifications presented in this Technical Note reflect the performance of standalone sensors. Actual sensor characteristics may differ when the sensor is installed in different instruments. As sensor performance may change over time, specifications provided are for brand-new sensors.

## ToxiRAE Pro PID User's Guide

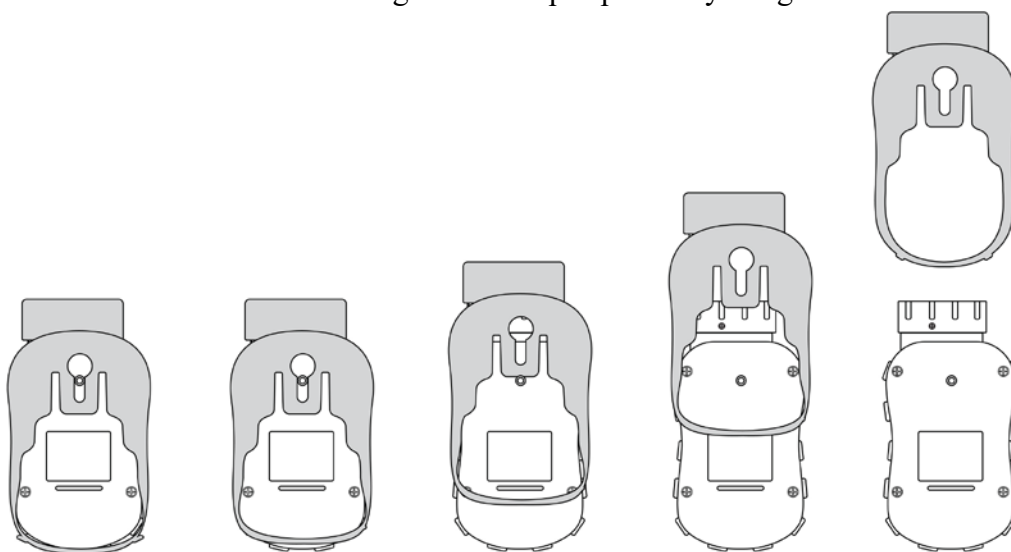
### 17.3. Removing And Installing The Rubber Boot

The protective rubber boot on the ToxiRAE Pro PID must be removed before the sensor top cap or back of the instrument can be removed. When removing the boot, follow these steps outlined here.

1. Flip up the tab on the belt clip on the rear of the instrument.
2. Remove the Philips screw that holds the clip in place.



3. Stretch the bottom corners of the boot and gently slide the bottom of the boot over the rear of the ToxiRAE Pro PID.
4. Slide the boot up until it comes off of the instrument. Make sure that you do not force it to move if it sticks against the top cap. Gently nudge it.



5. Inspect the rubber boot for damage, and replace it if it is cracked or torn.

When replacing the boot, simply reverse the procedure, sliding the boot onto the instrument and then carefully stretching it over the bottom portion of the instrument. Do not forget to replace the belt clip.



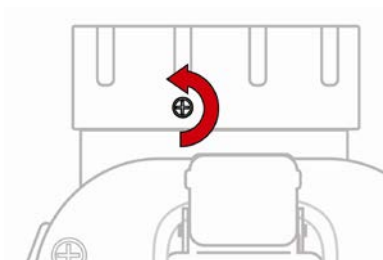
## ToxiRAE Pro PID User's Guide

### 17.4. Filter Replacement

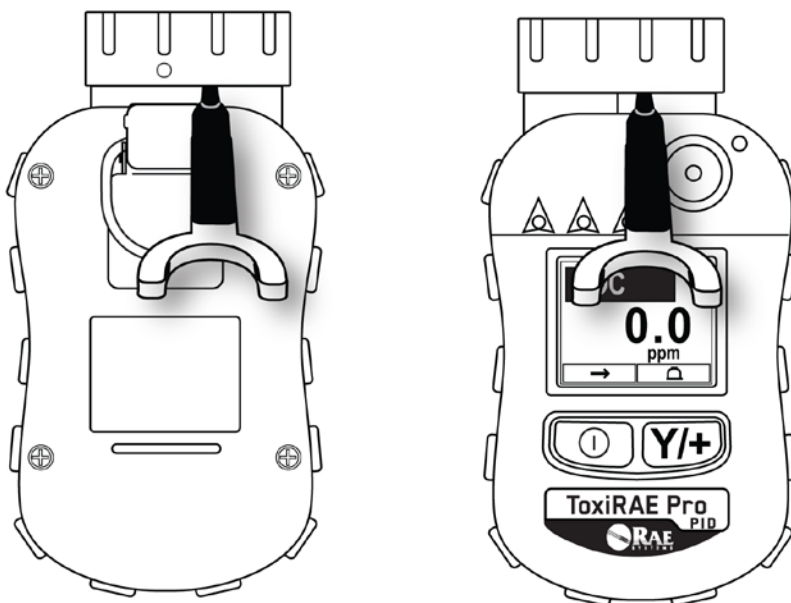
A filter is permanently attached inside the ToxiRAE Pro's top cap, which helps to keep debris and moisture out. This filter should be inspected periodically, and the cap and rubber insert should be inspected for damage. If the filter is dirty or the cap or rubber insert shows signs of damage, replace the entire instrument cap assembly, including the cap, screw, filter, and the rubber insert (part number G02-0305-003, package of three).

To replace the cap assembly:

1. Remove the top cap. First remove the small Phillips screw on the back side:

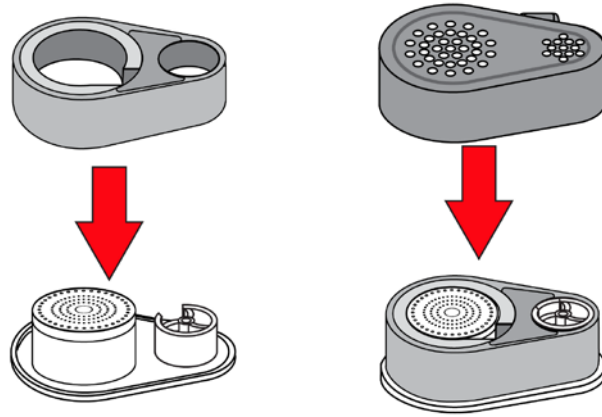


2. Then use the special tool (part number G02-0306-003, package of three) and apply leverage at the middle of the instrument to push the top cap loose, and then remove it with your fingers.

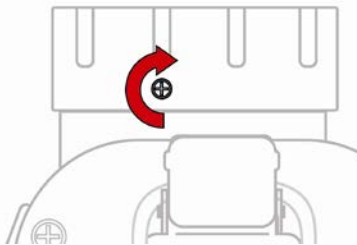


## ToxiRAE Pro PID User's Guide

3. Once the top cap is removed, install the new top cap assembly.
4. Place the new rubber insert onto the ToxiRAE Pro PID, being careful to align the insert correctly and that it is not distorted. Also, make sure that you do not press on the fan.



5. Press the new top cap onto the ToxiRAE Pro until it is fully seated. Check to see that the pin on the front side of the cap went into the corresponding groove on the front side of the instrument housing. Then tighten the Phillips screw.

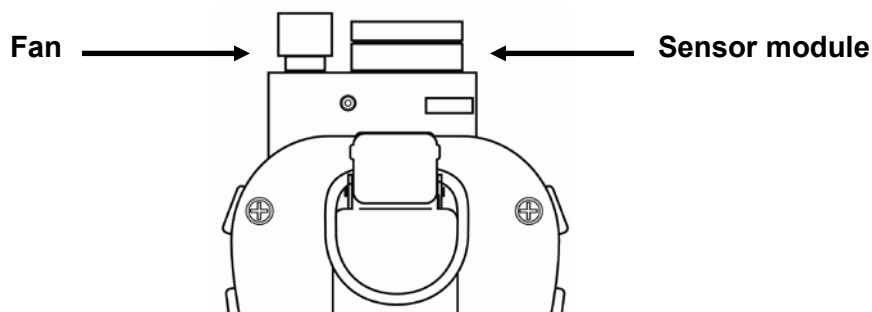


## ToxiRAE Pro PID User's Guide

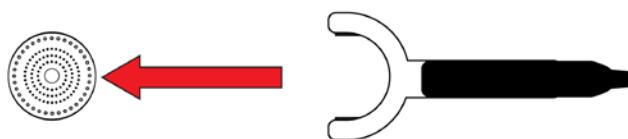
### 17.5. Cleaning Or Replacing The PID

Follow the instructions for removing the top cap in the previous section.

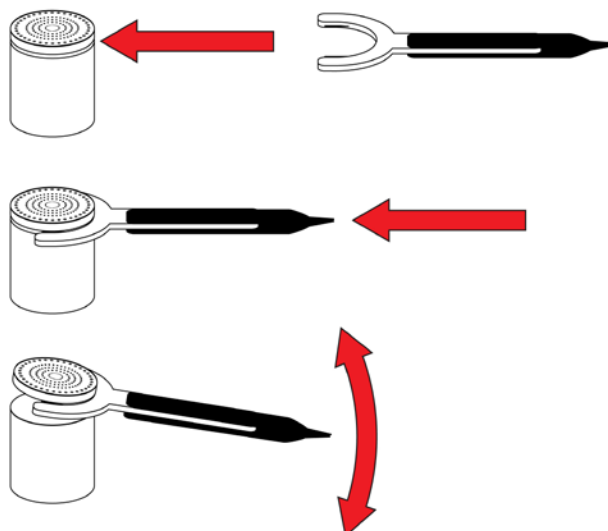
1. Gently lift out the PID module with your fingers, being careful not to damage the fan:



2. If the module requires replacement (because the lamp does not illuminate, or the module has been used past its expiration date), place a new module into the slot, being careful to match the indexing keys. The sensor can only go into its slot one way. Refer to step 11 for alignment information.
3. If you want to open the sensor module to inspect and clean the lamp and sensor electrode panel, you must use the special tool. The special tool's "C"-shaped end has small "teeth" inside. Slide the tool so that the teeth slip into the notch between the module's cap and body:

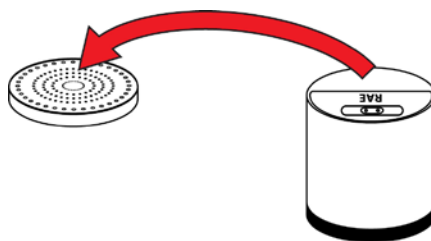


4. Gently pry up the cap using a rocking motion:

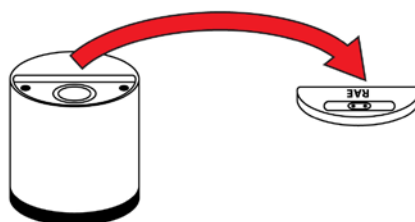


## ToxiRAE Pro PID User's Guide

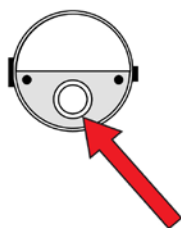
5. Once the cap is removed, set it aside.



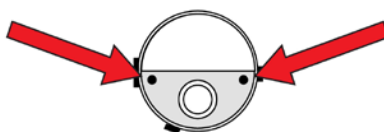
6. Now lift the sensor electrode panel from the module:



7. Clean the sensor electrode panel in a solution of methanol lamp cleaner (included, along with cleaning swabs, in a PID Lamp Cleaning Kit, part number 500-0014-010, package of 10), and allow it to dry.
8. Clean the lamp's window with a cleaning swab dipped in methanol lamp cleaner, and allow it to dry. Do not touch the lamp window with your fingers, as the residual oils will shorten its life.

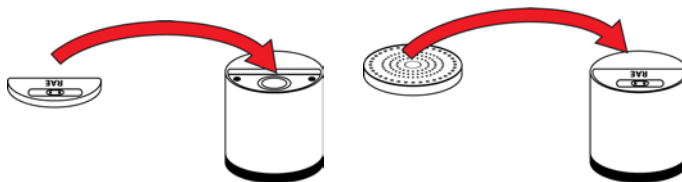


9. Inspect the electrical contacts. Clean them with a swab dipped in lamp cleaner if they appear to need cleaning:

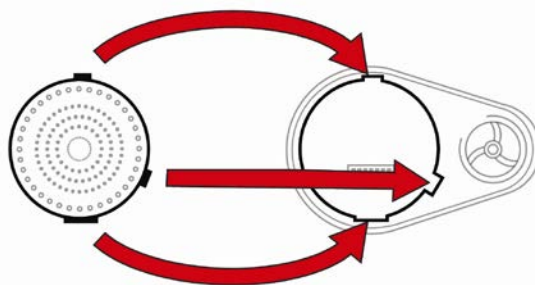


## ToxiRAE Pro PID User's Guide

10. Reassemble the sensor module by placing the sensor electrode panel back in place and firmly pressing the cap back onto the top.



11. Place the sensor module back into the ToxiRAE Pro PID. Make sure the index points are aligned (it can only go in one way).



**Match index points on sensor module with ToxiRAE Pro PID**

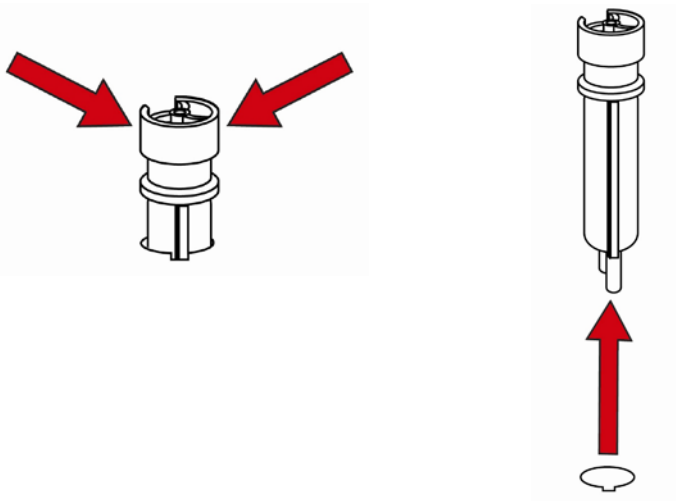
12. Carefully place the cap back onto the ToxiRAE Pro PID and tighten the screw.

**Note:** Always calibrate the ToxiRAE Pro PID after replacing the sensor module.

### 17.6. Replacing The Fan

If the fan stops working or is damaged, it can be replaced (part number G02-3006-000). Before replacing the fan, make sure the instrument is turned off.

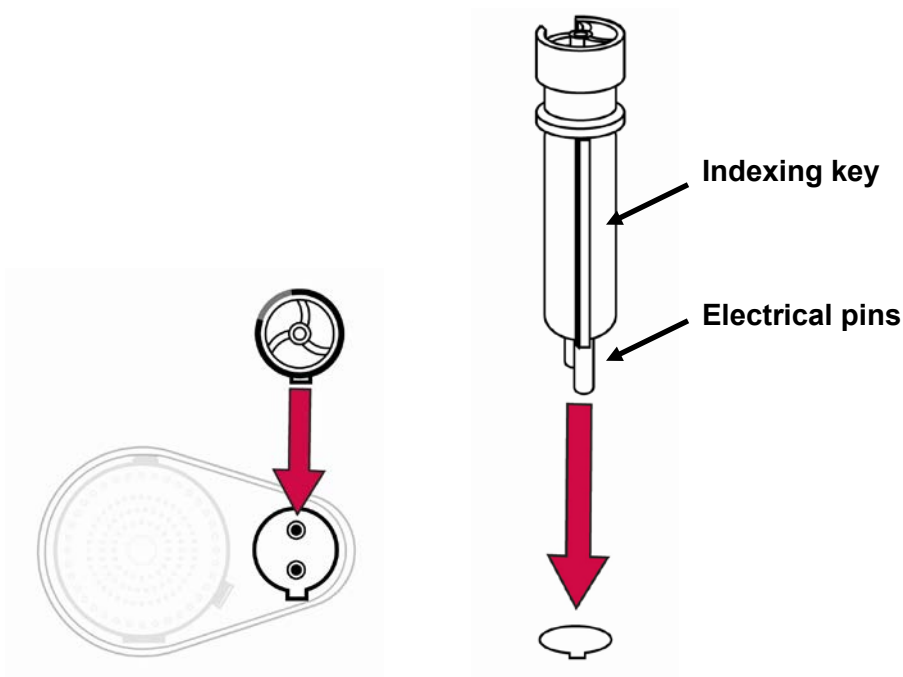
1. Remove the top cap as shown in Section 15.2 (page 56).
2. Grip the fan with two fingers and pull up.



## ToxiRAE Pro PID User's Guide

3. Inspect the new fan and make sure its two electrical pins are straight.
4. Align the fan so that the indexing key (the raised rectangular portion) on its body matches with the keyway in the slot and the electrical pins and carefully slide into the contact points at the bottom of the slot.

**Important!** If you encounter resistance while pressing the new fan into the slot, remove it and check that the electrical pins are not bent and that all alignment is correct before inserting the fan again.



5. Gently press the fan into place to make sure it is completely seated.
6. Replace the top cap.
7. Turn the instrument on and test it.

## **ToxiRAE Pro PID User's Guide**

### **17.7. Cleaning The Exterior**

Occasional external cleaning of the instrument with a soft cloth is recommended. Do not use detergents or chemicals. If necessary, you can use a damp cloth (water only). It is a good idea to install the Calibration Adapter before cleaning the ToxiRAE Pro PID's housing, to keep dirt, dust, or moisture away from the sensor openings and to keep the filter clean.

Visually inspect the contacts at the base of the ToxiRAE Pro PID and on the charging cradle to make sure they are clean. If they are not, wipe them with a soft, dry cloth. Never use solvents or cleaners.

#### **17.7.1. Ordering Replacement Parts**

If you need replacement parts, contact your local RAE Systems distributor. A list of authorized distributors is available online:

<http://www.raesystems.com>

## ToxiRAE Pro PID User's Guide

### 18. Troubleshooting

Problem	Possible Reasons & Solutions
Cannot turn on power	<p><b>Reasons:</b> Depleted battery. Defective battery.</p> <p><b>Solutions:</b> Replace battery.</p>
Lost password	<p><b>Solutions:</b> Use ProRAE Studio II software to change the password.</p> <p>Call Technical Support at +1 408-752-0723 or toll-free at +1 888-723-4800</p>
Reading abnormally Low	<p><b>Reasons:</b> Calibration Adapter is attached. Incorrect calibration.</p> <p><b>Solutions:</b> Remove Calibration Adapter. Calibrate the ToxiRAE Pro PID.</p>
Buzzer, LEDs, or vibration alarm Inoperative	<p><b>Reasons:</b> Alarms may be turned off. Blocked alarm port. Bad buzzer, LEDs, or vibration alarm.</p> <p><b>Solutions:</b> Enable alarms in the Buzzer &amp; Light section of the Alarm Settings sub-menu in the Programming menu. Unblock alarm port. Call authorized service center.</p>



### **19. RAE Systems Contact**

For contact information:

[www.raesystems.com](http://www.raesystems.com)

# ToxiRAE Pro PID User's Guide

## 21. Appendix A: Regulatory Information

### SAFETY INSTRUCTIONS

#### Read Before Operating

This manual must be carefully read by all individuals who have or will have the responsibility of using, maintaining, or servicing this product. The product will perform as designed only if it is used, maintained, and serviced in accordance with the manufacturer's instructions. The user should understand how to set the correct parameters and interpret the obtained results.

### CAUTION!




Only use RAE Systems battery pack P/N: G02-3004-000  
Do only charge the battery pack using RAE Systems charger outside hazardous area.  
Use of non-RAE Systems components will void the warranty and can compromise the safe performance of this product.  
Warning: Substitution of components may impair intrinsic safety.

### ToxiRAE Pro Marking

The ToxiRAE Pro is certified according to the IECEx scheme, ATEX and CSA for US and Canada as protected by intrinsic safety.

The ToxiRAE Pro is marked with the following information:

RAE SYSTEMS  
1349 Moffett Park Drive  
Sunnyvale CA 94089, USA  
ToxiRAE Pro  
Type PGM-1800.  
Serial No/barcode: XXXX-XXXX-XX

IECEx SIR 10.0096X Ex ia IIC T4 Ga	 2460  II 1G SIRA 10 ATEX 2189X Ex ia IIC T4 Ga	 2010 2360054 I.S. for Cl.I Dv 1, Grps A,B,C,D T- Code T4. Class I, Zone 0 A/Exia IIC T4 Only as to intrinsic safety for use in hazardous loc. Intrinsically safe/ Securite Intrinseque/Exia
--	---	--

-20° C < Tamb < +55° C;

Um: 20V

Battery pack: G02-3004-000

**Warning:** Read User's Manual for Intrinsic Safety Precautions

**Warning:** Substitution of components may impact intrinsically safety

# **ToxiRAE Pro PID User's Guide**

## **Operation Area and Conditions**

### **Hazardous Areas classified by Zones**

ToxiRAE Pro PID (PGM1800) are intended to be used in hazardous areas classified zone 0, zone 1 or zone 2, where gases of explosion groups IIA, IIB or IIC and T4 may be present.

For North America and Canada the equipment can further be used in Class I, Zone 0.

### **Hazardous Areas classified by Divisions**

ToxiRAE Pro is intended to be used in hazardous areas classified for Class I Div. 1 or 2, within the temperature range of -20° C to +55° C, where gases of explosion groups A, B, C or D and temperature code T4 may be present.

## **Instruction For Safe Use**

Strictly follow the instructions for safe use. Application of the ToxiRAE Pro requires full understanding and strict observation of the instructions.

Only use RAE Systems battery pack P/N: G02-3004-000

Do only charge the battery pack using RAE Systems charger outside hazardous area (Um: 20V).

## **Use In Hazardous Areas**

Equipment which is intended for use in explosive atmospheres and which has been assessed and certified according to international regulations may be used only under specified conditions. The components may not be modified in any way.

The appropriate regulations for service and repair must be properly observed during such activities.