

DESIGNED WITH YOU IN MIND.

Hearing Protection Mini Guide



Honeywell
HOWARD
LIGHT

EARPLUGS



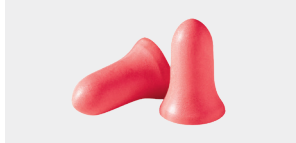
PLUG IN TO SAFETY

The Honeywell Howard Leight™ commitment to hearing loss prevention means considering all the features that make one earplug different from another: material, shape, fit, and NRR.

We make it easy to compare products and ensure that all your employees receive the right fit and protection.

DISPOSABLE

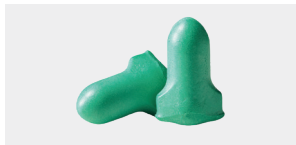
An economical and convenient choice for work situations that demand a high degree of comfort, or where hygiene presents a problem for reuse. Formable foam is also the material of choice when highest attenuation is required.



MAXIMUM

Highest NRR in disposable.

NRR 33	MXM-1	MXM-30
CAN A(L)	Uncorded	Corded



MAXIMUM LITE

Low pressure foam for maximum comfort.

NRR 30	LPF-1	LPF-30
CAN A(L)	Uncorded	Corded



LASER LITE®

Highly visible protection.

NRR 32	LL-1	LL-30
CAN A(L)	Uncorded	Corded



X-TREME®

Tapered design for comfort.

NRR 32	XTR-1	XTR-30
CAN A(L)	Uncorded	Corded



FIRMFIT®

Firm foam reinvented.

NRR 30	FF-1	FF-30
CAN A(L)	Uncorded	Corded

FOR DISPOSABLE FOAM EARPLUGS

Inspect: Prior to fitting, examine your earplugs.

Discard: Discard disposable earplugs after each use, or if earplugs are compromised.

Hygiene: To maintain hygiene standards, disposable earplugs should be discarded at the end of every shift.

*Uncorded Plugs are also available in LS-500 Refills, HL400 Cannisters, and Zip Top Bag Refills

PUSH-IN FOAM

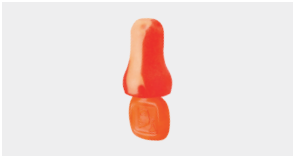
Designed so they're easy to fully insert and remove without picking up dirt from workers' fingers, and comfortable to wear during the work day. Give workers confidence – with TrustFit® push-in foam earplugs.



TRUSTFIT® POD

Reusable, no-roll down, push-in foam, pod-shaped earplug.

NRR 28	TRUSTFITPOD-1	TRUSTFITPOD-30
CAN A(L)	Uncorded	Corded



TRUSTFIT® PLUS

Reusable, no-roll down, push-in foam, bell-shaped earplug.

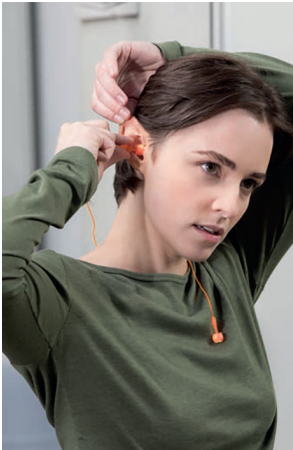
NRR 31	TF-PLUS-1	TF-PLUS-30
CAN A(L)	Uncorded	Corded



TRUSTFIT® TRAK

Reusable, no-roll down, push-in foam, pod-shaped metal detectable earplug.

NRR 29	TFT-POD-30
	Corded



IT'S ALL ABOUT CHOICE FOR PUSH-IN FOAM EARPLUGS

Inspect: Prior to fitting, examine earplugs for dirt, damage or hardness – discard immediately if compromised.

Clean: Earplugs should be cleaned between each use and prior to re-insertion. To wash use mild soap and warm water, pat dry then store in protected area when not in use.

Chemicals, disinfectants, and solutions should not be used on foam earplugs.

Hygiene: Earplugs can be used a full work-week. Replace after 5 days or if foam tip is damaged or hardened.

REUSABLE

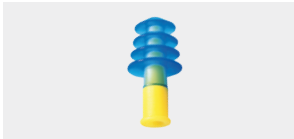
Ideal for environments where employees can retain and store earplugs for reuse over time, reducing waste and saving money.



QUIET™

Easy handling, better fit.

NRR 26	QD-1	QD-1-DS	QD-30	QD30-RC
CAN A(L)	Uncorded	LS500 Refill	Corded	Reusable Case



FUSION™

All-day comfort, easy handling.

NRR 27	FUS30-HP
CAN A(L)	Corded



FUSION™ SMALL

For smaller ear canals.

NRR 27	FUS30S-HP
CAN A(L)	Corded



SMARTFIT™

Personalized fit.

NRR 25	SMF-30	SMF-30W-P	SMF-30BU
CAN A(L)	Detachable cord	Cotton Cord/ Paper Bag	Corded/ Blue Nylon



AIRSOFT™

Optimized for comfort.

NRR 27	DPAS-1	DPAS-30R
CAN A(L)	Uncorded	Corded/Red Polycord

FOR ALL MOLDED REUSABLE EARPLUGS

Inspect: Prior to fitting, examine your earplugs for dirt, damage, deformation or extreme hardness – discard immediately if compromised.

Clean: Wash reusable earplugs with mild soap and warmwater only. Pat dry with a towel and store when not in use. Do not treat with any other substances, as the earplugs may degrade and compromise effectiveness.

Hygiene: With proper maintenance, reusable earplugs can be used daily for 2-4 weeks.

*Airsoft also available in White Nylon Cord & Reusable Case

DETECTABLE

Specially created for environments where contamination from foreign objects is unacceptable. Available in both disposable and reuseable options. Detectable features (metal, visual, optical, x-ray).



LASER TRAK™

Disposable, visual and metal detectable features.

NRR 33	LT-30
CAN A(L)	Corded



TRUSTFIT™ TRAK

Reusable, metal detectable push-in foam earplug.

NRR 29	TFT-POD-30
CAN A(L)	Corded



SMARTFIT™ DETECTABLE

Personalized fit and detectability.

NRR 25	SDT-30
CAN A(L)	Corded



FUSION™ DETECTABLE

All-day comfort, easy handling and detectability.

NRR 25	FDT-30
CAN A(L)	Corded



FUSION™ DETECTABLE SMALL

All-day comfort for smaller ear canals and detectability.

NRR 25	FDT-30-SM
CAN A(L)	Corded

BANDED



An alternative for those who work in intermittent noise or for managers and visitors who move in and out of noisy areas.

QB1® HYG

Inner-aural protection

NRR 27	QB1HYG
CAN A(L)	

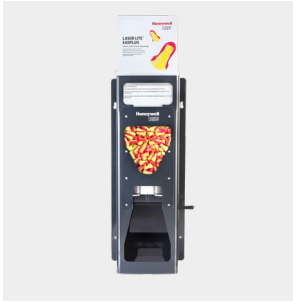
FOR ALL BANDED EARPLUGS

Inspect: Inspect band and earpods prior to fitting. Replace earpods if they are dirty, damaged, hard or stiff. Replace the band if it becomes brittle or deformed.

Clean: Clean the band and earpods with mild soap and warmwater only, and dry thoroughly. Use of cleaners other than mild soap and water may damage the materials.

Replace: Replace pods every 2-4 weeks to ensure optimal protection and performance.

DISPENSERS



LEIGHT® SOURCE 500

Hygienic and economical source for earplugs

The Leight Source 500 earplug dispenser provides a highly visible, user-friendly, permanent hearing protection center. Built with heavy-duty anodized aluminum and designed for wall installation, the Leight Source 500 dispenses earplugs with a simple turn of the handle, providing a hygienic and economical source for earplugs.



HL400-AM DISPENSERS FOR EARPLUGS

Hearing protection – hygienically dispensed

Introducing Honeywell's HL400-AM Earplug Dispenser – with built-in antimicrobial properties to protect the dispenser against stains, discoloration and odors caused by mold, mildew and bacteria.



HYGIENIC AND ECONOMICAL SOURCE FOR CORDED EARPLUGS

Quick and convenient dispensing of your favorite corded earplugs is now a reality. New easy-refill lid allows for quick dump and go of bagged earplugs. Plus, 400 pair capacity means less time spent on resupplying.



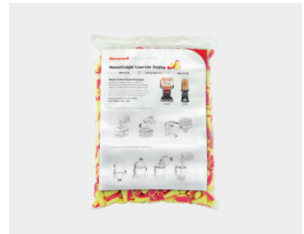
GET STARTED

Dispensers with prefilled canisters.



PLUG'N PLAY

Refill canister.

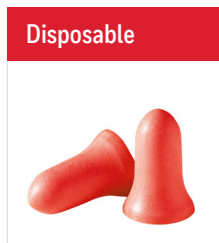


EASY REFILL

Refill bag.

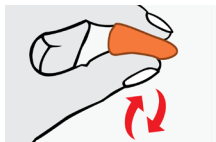
PROPER FIT CRITICAL

Everyone's ear canals are unique, and that makes fitting an earplug a very personal experience. The only hearing protector that works is one that fits comfortably and gets worn.



Disposable

**Roll-Down Foam
MAXIMUM**



With clean hands, roll the entire earplug into narrowest possible crease-free cylinder.



Reach over your head with a free hand, pull your ear up and back, and insert the earplug well inside your ear canal.



Hold for 30 – 40 seconds, until the earplug fully expands in your ear canal. If properly fitted, the end of the earplugs should not be visible to someone looking at you from the front.



Reusable

**Push-In Foam
Trust Fit™**



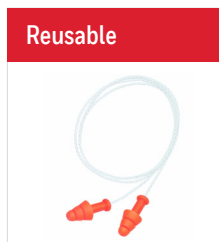
While holding the stem, reach a hand over your head and gently pull the top of your ear up and back.



Insert earplug so foam tip is well inside the ear canal. Use a gentle rocking motion while pushing earplug into ear canal to ensure a deep fit.



If properly fitted, the tip of the earplug stem may be visible to someone looking at you from the front.



Reusable

**Pre-Molded Push-In
Smart Fit®**



While holding the stem, reach a hand over your head and gently pull top of your ear up and back.



Insert the earplug so all flanges are well inside your ear canal.



If properly fitted, the tip of the earplug stem may be visible to someone looking at you from the front.

For more information on proper fit, contact your Honeywell seller to learn about VeriPRO Fit Testing.

EARMUFFS



ROBUST PROTECTION. TOP PERFORMANCE.

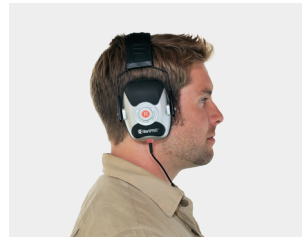
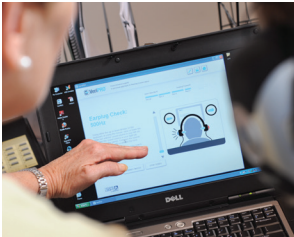
Every day, employees count on Honeywell Howard Leight™ earmuffs to block noise and manage sound in some of the world's most acoustically-challenging environments.

Utilizing our patented technologies, we offer a range of earmuffs with varying product features and attenuation levels targeted to fulfill the needs and meet the demands of different users and work situations.

VERIPRO[®] FIT-TESTING SYSTEM

TEST REAL EARPLUGS. GET REAL RESULTS.

VeriPRO[®]'s three-step process checks the effectiveness of an employee's earplug fit in each ear, using either Quick Check or Complete Check mode. This information is then captured in individual reports, accessible by the safety manager.



SOFTWARE

The software for VeriPRO was created to be easy to use — as simple as an ATM or an airport ticketing kiosk. It's easy to install on any PC, easy to get started and easy to operate. Its straightforward interface is readily understandable, even for people who aren't regular computer users.

AUDIO PROCESSOR

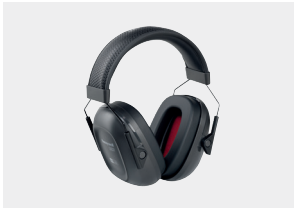
Converts digital signal from the VeriPRO software, calibrates it to the headphones and amplifies the sound. The Audio Processor ensures accurate delivery of VeriPRO signals and increases test reliability.

HEADPHONES

The VeriPRO headphones are not your typical listening gear. These patented high-output headphones were designed specifically for VeriPRO. They are audiometrically optimized and calibrated to the signals used in the VeriPRO test, and can be used to test any earplug including earplugs that haven't even been invented yet.

PASSIVE VERISHIELD™ FAMILY

Lightweight construction with steel-wire and padded headband. Comfortably adjusts to a wide range of head sizes with precision micro-adjustments. Air Flow Control technology allows higher attenuation with smaller earcups. Patented sound stabilizer design ensures optimum noise attenuation across all frequencies. Wide cup openings with snap-in replaceable memory-foam cushions for greater comfort.



VERISHIELD™ HEADBAND

Maximum protection and durable padded metal headband.

VS110	NRR 24	CAN A	1035100-VS (Shown)
VS120	NRR 26	CAN A	1035104-VS
VS130	NRR 30	CAN A(L)	1035108-VS
VS130 HV	NRR 30	CAN A(L)	1035110-VS (HI-VIS)



VERISHIELD™ CAP-MOUNTED

For use with a wide range of hard hats, with full brim option.

VS110H	NRR 21	CAN B	1035118-VS
VS120H	NRR 24	CAN A	1035121-VS (Shown)
VS130H	NRR 27	CAN A(L)	1035124-VS
VS130HHV	NRR 27	CAN A(L)	1035127-VS (HI-VIS)



VERISHIELD™ NECKBAND

Sleek, anatomical behind-the-neck design.

VS110N	NRR 22	CAN B	1035112-VS
VS120N	NRR 25	CAN A(L)	1035114-VS
VS130N	NRR 28	CAN A(L)	1035116-VS (Shown)



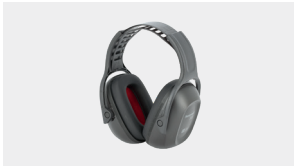
VERISHIELD™ FOLDING

Convenient folding design for easy storage.

VS110F	NRR 24	CAN A	1035102-VS
VS120FHV	NRR 27	CAN A(L)	1035106-VS (HI-VIS, Shown)

PASSIVE VERISHIELD™ DIELECTRIC FAMILY

Lightweight robust non-deforming plastic with dielectric construction. ABS (Acrylonitrile Butadiene Styrene) molded and hot stamped surface finished cup withstands oily, heavy-work environments and frequent cleaning. Comfortably adjusts to a wide range of head sizes with precision micro-adjustments. Air Flow Control technology allows higher attenuation with smaller earcups. Patented sound stabilizer design ensures optimum noise attenuation across all frequencies. Wide cup openings with snap-in replaceable memory-foam cushions for greater comfort.



VERISHIELD™ HEADBAND

Uniform headband pressure for all head sizes.

VS110D	NRR 23	CAN A	1035190-VS
VS120D	NRR 26	CAN A	1035192-VS (Shown)
VS130D	NRR 29	CAN A(L)	1035195-VS



VERISHIELD™ CAP-MOUNTED

For use with a wide range of hard hats.
Folds back for easy storage.

VS110DH	NRR 23	CAN A	1035200-VS
VS120DH	NRR 25	CAN A	1035201-VS
VS130DH	NRR 27	CAN A(L)	1035202-VS (Shown)



VERISHIELD™ FOLDING

Convenient folding design for easy storage.

VS110DF	NR 25	CAN A	1035198-VS (Shown)
---------	-------	-------	--------------------

FOR ALL EARMUFF TYPES

Inspect: Regularly examine earcups and ear cushions for cracks and leaks — discard if earcups are visibly damaged or compromised. Replace ear cushions if damaged.

Clean: Wash earcups and ear cushions regularly with mild soap and water. They should not be dipped into water. Do not treat with any other substances as the ear cushions may degrade and compromise effectiveness.

Replace: As ear cushions and foam inserts can degrade over time, replace these every 6-8 months under normal wear, or every 3-4 months with heavy use or in humid/extreme climates.

PASSIVE VERISHIELD™ DIELECTRIC

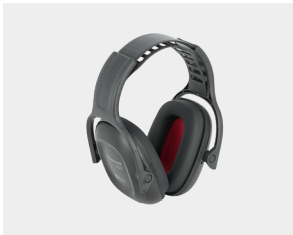
Economical choice for dielectric designs with adjustable headbands for your hearing protection needs.



VERISHIELD™ DIELECTRIC MULTI-POSITION

Inner-ventilated headband.

VS120M	NRR 25	CAN A	1035186-VS (Shown)
VS130M	NRR 30	CAN A(L)	1035187-VS

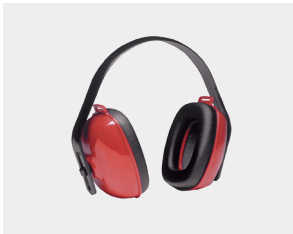


SOUND MANAGEMENT TECHNOLOGY

SMT Earmuff protects hearing while allowing speech frequency to be heard more naturally.

VS100D	NRR 20	1035197-VS (Shown)
--------	--------	--------------------

PASSIVE VALUE



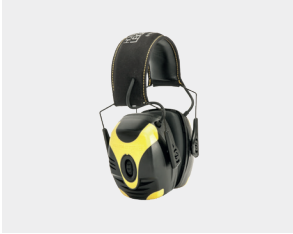
QM24+™ MULTI-POSITION HEADBAND

Ultra-lightweight design.

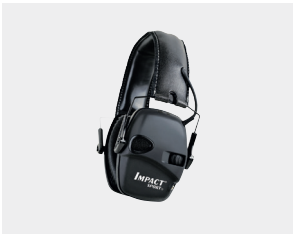
QM24+	NRR 25	QM24PLUS
CAN B		

ELECTRONIC IMPACT[®] FAMILY

Electronic sound amplification allows wearers to hear important communication – alarms / warning signals, co-worker’s voice.



IMPACT PRO INDUSTRIAL		
Highest passive NRR in electronic earmuffs.		
NRR 30	CAN A(L)	1030943



IMPACT SPORT		
Amplifies ambient sound while protecting hearing.		
NRR 22	CAN B(L)	R-01526 (Hunter green)
		R-02528 (MultiCam Alpine)
		R-02530 (USA Honor Collection)
NRR 22	CAN B	1030942 (Tactical black shown)

*Contact your Honeywell Sales Representative for additional color patterns.

ELECTRONIC SYNC[®] FAMILY

Combine hearing protection, high-fidelity sound, and the ability for individuals to listen to the radio or personal listening devices safely at work and at home.

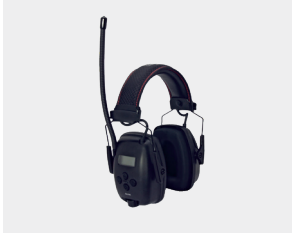


SYNC[®] WIRELESS BLUETOOTH[™]

Easy push-button connectivity to any Bluetooth[®] device.

NRR 25	1030945
--------	---------

CAN A(L)



SYNC[®] RADIO

AM/FM reception. Built for outdoor work environments.

NRR 25	1030331
--------	---------

CAN A(L)



SYNC[®] RADIO HI-VIS

High visibility earmuffs and reflective headband for visibility.

NRR 25	1030390
--------	---------

CAN A(L)

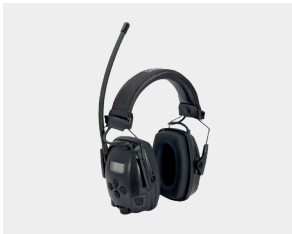


SYNC[®] STEREO

Stereo earmuff that easily connects to MP3 players.

NRR 25	1030110
--------	---------

CAN (L)



SYNC[®] ELECTO

Combines high-quality FM radio with electronic sound amplification.

NRR 25	1030333
--------	---------

CAN (L)



SYNC[®] ELECTO HI CAP-MOUNTED

Sync Electro in cap-mounted style to fit a variety of hard hats.

NRR 24	1030334-H5
--------	------------

CAN B(L)

For more information

sps.honeywell.com

**Honeywell Safety
Products USA, Inc.**

855 S Mint St
Charlotte, NC 28202
www.honeywell.com

HL Mini Guide | 07/23
©2023 Honeywell International Inc.

