



# **Xenon™ Ultra 1960x Series**

---

**Corded Area-Imaging Scanner**

Scanner Models: 1960h, 1960g, 1960li

## **Quick Start Guide**

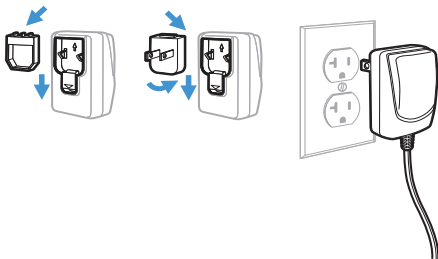
## Agency Model: 1960

**Note:** Refer to your User Guide for information about cleaning your device.

## Get Started

Turn off computer's power before connecting the scanner, then power up the computer once the scanner is fully connected.

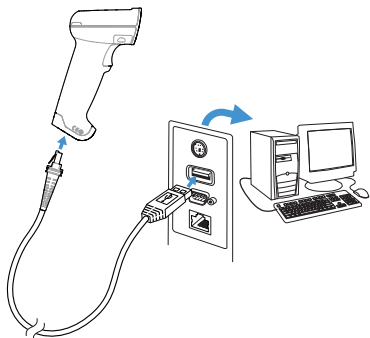
## Power Supply Assembly (if included)



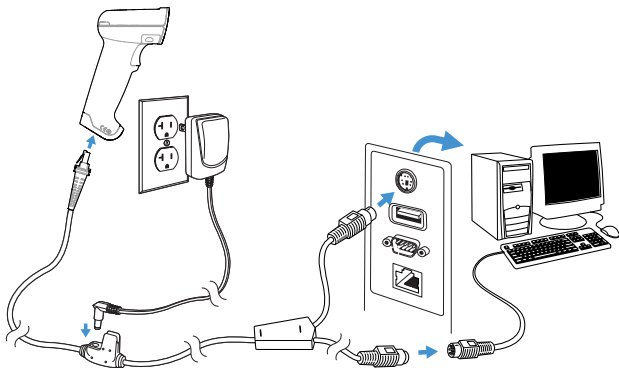
**Note:** The power supply must be ordered separately, if needed.

## Connect the Scanner

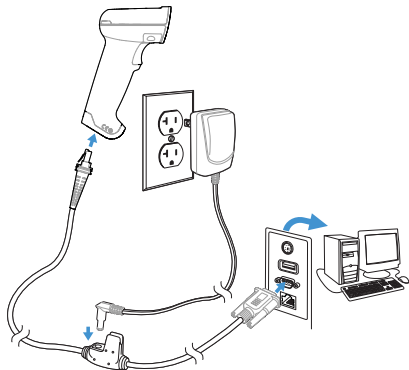
### USB:



## Keyboard Wedge:



## RS232 Serial Port:



## Reading Techniques

The view finder projects an aiming beam that should be centered over the bar code, but it can be positioned in any direction for a good read.



## Standard Product Defaults

The following bar code resets all standard product default settings.



Standard Product Defaults

## USB Serial

Scan the following code to program the scanner to emulate a regular RS232-based COM Port. If you are using a Microsoft® Windows® PC, you will need to download a driver from the Honeywell website ([sps.honeywell.com](https://sps.honeywell.com)). The driver will use the next available COM Port number. Apple® Macintosh computers recognize the scanner as a USB CDC class device and automatically use a class driver.



USB Serial

**Note:** *No extra configuration (e.g., baud rate) is necessary.*

## USB PC Keyboard

Scan the following code to program the scanner for a USB PC Keyboard.



USB PC Keyboard

## Keyboard Country

Scan the appropriate country code below to program the keyboard layout for your country or language. By default, national character replacements are used for the following characters: # \$ @ [ \ ] ^ ' { } ~ Refer to the ISO 646 Character Replacements chart in your User Guide to view the character replacements for each country.



USA (Default)



Belgium



Denmark



Finland



France



Germany/Austria



Great Britain



Italy



Norway



Spain



Switzerland

**Note:** For a complete list of country codes, see the User Guide for your product.

## Trigger

The following bar codes will allow you to use the scanner in **Manual Trigger - Normal Mode** (need to press the trigger to read) or **Presentation mode** (the scanner is activated when it “sees” a bar code).



Manual Trigger - Normal  
(Default)



Presentation Mode



## Streaming Presentation™

When in Streaming Presentation mode, the scanner leaves the scan illumination on all the time and continuously searches for bar codes.



Streaming Presentation Mode

## Suffix

If you want a carriage return after the bar code, scan the **Add CR Suffix** bar code. To add a tab after the bar code, scan the **Add Tab Suffix** bar code. Otherwise, scan the **Remove Suffix** bar code to remove the suffixes.



Add CR Suffix



Add Tab Suffix



Remove Suffix

## Add Code ID Prefix to all Symbologies

Scan the following bar code if you wish to add a Code ID prefix to all symbologies at once.



Add Code ID Prefix To All Symbologies  
(Temporary)

*Note: For a complete list of Code IDs, see the User Guide for your product.*

## Function Code Transmit

When this selection is enabled and function codes are contained within the scanned data, the scanner transmits the function code to the terminal. Charts of these function codes are provided in your User Guide. When the scanner is in keyboard wedge mode, the scan code is converted to a key code before it is transmitted.



Enable  
(Default)



Disable

## Healthcare

**Note:** *The following settings are only supported on 1960h models.*

## Epic

Scan the following bar code to configure your device to communicate with an Epic software application.



EMR Application

## Meditech®

Scan the following bar code to configure your device to communicate with a Meditech software application.



Meditech Application

## Quiet Operations

The following codes configure the scanner for quiet modes that do not disturb resting patients.

## Silent Mode with Flashing LED

Scan the following bar code to completely silence the scanner. When a bar code is scanned, the LED and aimer flash 5 times. Green indicates a good scan, red indicates a bad scan.



Silent Mode with Flashing LED

## Silent Mode with Long LED

Scan the following bar code to completely silence the scanner. When a bar code is scanned, the LED and aimer remain solidly lit for 1 second. Green indicates a good scan, red indicates a bad scan.



Silent Mode with Long LED

## Very Low Beeper (Nighttime Mode)

The following bar code programs the scanner for a very low beep. When a bar code is scanned, the scanner emits a very soft beep.



Nighttime Mode

## Low Beeper (Daytime Mode)

The following bar code programs the scanner for a low volume. When a bar code is scanned, the scanner emits a low beep.



Daytime Mode

## Support

To search our knowledge base for a solution or to log into the Technical Support portal and report a problem, go to [honeywell.com/PSStechnicalsupport](http://honeywell.com/PSStechnicalsupport).

## Product Documentation

Product documentation is available at [sps.honeywell.com](http://sps.honeywell.com).

## Limited Warranty

For warranty information, go to [sps.honeywell.com](http://sps.honeywell.com) and click **Support > Warranties**.

## Patents

For patent information, see [www.hsmpats.com](http://www.hsmpats.com).

## Disclaimer

Honeywell International Inc. (“HII”) reserves the right to make changes in specifications and other information contained in this document without prior notice, and the reader should in all

cases consult HII to determine whether any such changes have been made. HII makes no representation or warranties regarding the information provided in this publication.

HII shall not be liable for technical or editorial errors or omissions contained herein; nor for incidental or consequential damages resulting from the furnishing, performance, or use of this material. HII disclaims all responsibility for the selection and use of software and/or hardware to achieve intended results.

This document contains proprietary information that is protected by copyright. All rights are reserved. No part of this document may be photocopied, reproduced, or translated into another language without the prior written consent of HII.

Copyright © 2023 Honeywell Group of Companies. All rights reserved.