



RP2, RP4 Series

RP2B/RP2D/RP4B/RP4D*

Mobile Printers

Quick Start Guide

**For China, models RP2B-C, RP2D-C, RP4B, RP4D-C*

**For Thailand models RP2B, RP2D-T, RP4B, RP4D-T*

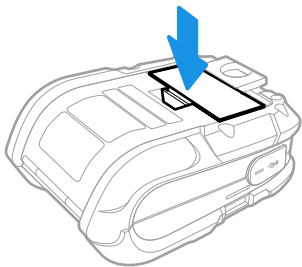
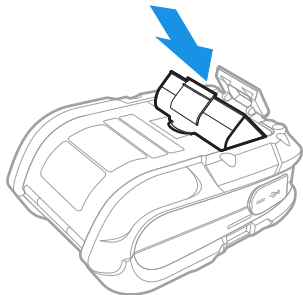
**For India models RP2B, RP2D, RP4B-I, RP4D-I*

RP234-EN-QS Rev E

10/21

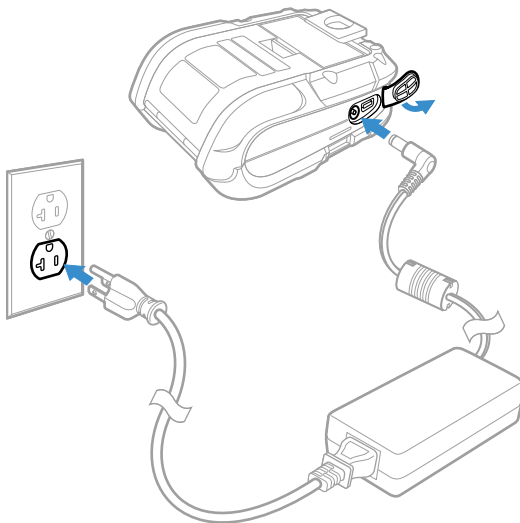
Get Started

1. Install the battery in the printer. Align the release tab with the same side as the charge contacts and lock the battery into position. The latch clicks into place when properly seated.



2. Connect the power supply to printer's power jack.

3. Connect the AC power cord to the power supply and plug into an outlet.

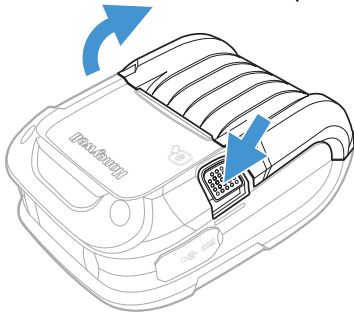


Note: *Operating the printer while it is connected to the AC power supply can shorten the life of the battery and is not recommended.*

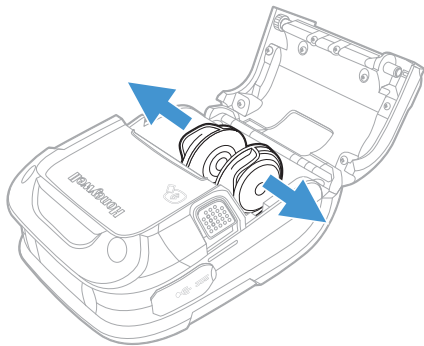
Load Labels or Paper

Load labels or paper into the printer as follows:

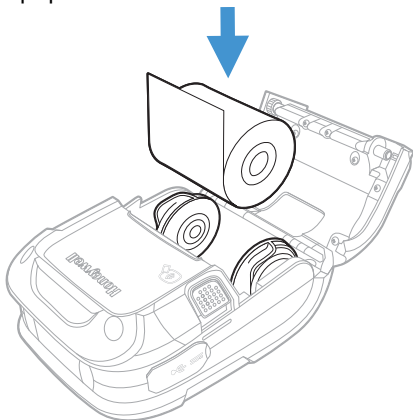
1. Press down on the latch lock and lift up the printer's cover.




2. Slide and hold open the supply hubs.



3. Orient the paper as shown and insert into the printer.



4. Allow the supply hubs to retract onto the paper roll, then press the cover down until it latches.
5. Press the media button  2 or 3 times to normalize tracking. Each button press advances the paper to the start of the next label.

Download Required Software

Download and install the NETira[®] CT Printer Configuration Utility and Windows Printer Drivers software from the Technical Support Downloads Portal at [honeywell.com/PSSsoftware-downloads](https://www.honeywell.com/PSSsoftware-downloads).

NETira® CT Printer Configuration Utility

1. In the Technical Support Downloads Portal, go to **Software > Printers > Printer Software and Drivers > Printer Configuration Tools > NETira CT** and click on **Download**.
2. When prompted, click on **Open Honeywell Software Downloader** and download the file to a local directory on your computer.
3. Extract the file and then double-click the extracted installation file. Follow the prompts to install the software.

Windows Printer Drivers

1. In the Technical Support Downloads Portal, go to **Software > Printers > Printer Software and Drivers > Printer Drivers > Windows Print Drivers > Current** and click on **Download**.
2. When prompted, click on **Open Honeywell Software Downloader** and download the file to a local directory on your computer.
3. Extract the file and then double-click the extracted installation file. Follow the prompts to install the driver installation files in a local directory on your computer.
4. Install the drivers by following the installation instructions that are located in the installation directory.

Add the Printer to Your Host System

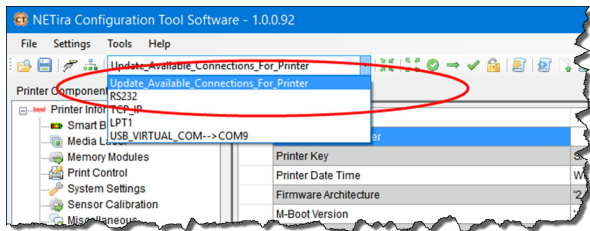
The default USB class is CDC Composite. On some systems (e.g., handheld devices), you will have to change this USB class in order to connect. See your User Guide for further information.

1. Connect the USB cable to the printer and to the USB port on the host system.
2. Power up your printer.
3. Your host computer should recognize the printer and begin adding the device driver. If the setup operation does not start, locate the **Devices and Printers** section in the Control Panel and select **Add a Printer**.
4. Select the appropriate RP printer model and follow the prompts to finish installation.

Configure the Printer

1. Turn the printer on and connect it to the computer using the USB cable.
2. Open the NETira™ CT Printer Configuration Utility Tool.
3. Query the printer by selecting **Update_Available_Connections_For_Printer** from the

dropdown menu. This option will look for the USB Virtual COM Port.



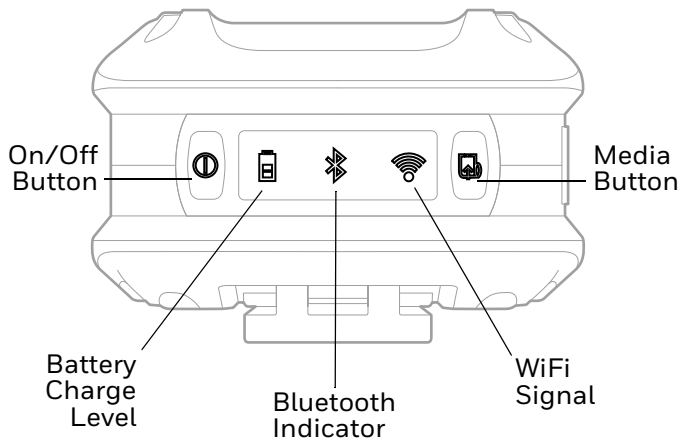
4. After the utility updates the connections, select the **USB_Virtual_COM** port from the dropdown menu.

Note: Make sure this port is not in use by the printer driver when you add it to the host system.

5. Press **CTRL-q** to display the printer's configuration.

See your User Guide for detailed information about changing the printer's settings.




Front Panel



On/Off Button ⓘ

| Button Press | Result |
|--------------------------------------|---------------------------|
| Any length press when printer is off | Turn printer on |
| Short press (less than 5 seconds) | Enter or exit sleep mode |
| Medium press (5 - 10 seconds) | Print configuration label |
| Long press (more than 10 seconds) | Turn printer off |

LED Display

| Icon | Indication |
|--|---|
|  Battery charge level | When not charging: Off = Battery is midway to fully charged Solid orange = Battery charge is 10-30% Blinking red = Battery charge is 10% or less When charging: Solid green = Battery charge is 90% or more Solid red = Battery charge is less than 90% |
|  Bluetooth indicator | Off = Bluetooth radio is off, disabled, not associated with a mobile device, or printer is off Blinking = Data transmission Solid blue = Bluetooth is enabled and connected |
|  WiFi signal | Off = WiFi radio is off, disabled, not associated with a mobile device or network, or printer is off White = WiFi is enabled and connected |

Media Button

The media button advances the paper through the printer. When there is no paper in the printer, the button blinks red.

| Button Press | Result |
|--|--|
| Short press | Feeds label or paper length |
| Press and hold (when configured for continuous form receipt paper) | Media feeds continuously to the maximum label length |

Audible Indicators

| Beeps | Indication |
|-------------------------------|---------------------------|
| 1 long beep | Power supply disconnected |
| 2 short beeps every 5 seconds | No media |
| 2 long beeps | Power supply connected |
| 3 short beeps | Battery charge is low |
| 5 short beeps | Printer door open |

Support

Go to sps.honeywell.com and then select **Support > Productivity** to find a host of options to help you quickly find the support you need and/or who to contact.

Limited Warranty

For warranty information, go to sps.honeywell.com and then select **Support > Warranties**.

Patents

For patent information, see www.hsmpats.com.

Disclaimer

Honeywell International Inc. (“HII”) reserves the right to make changes in specifications and other information contained in this document without prior notice, and the reader should in all cases consult HII to determine whether any such changes have been made. The information in this publication does not represent a commitment on the part of HII.

HII shall not be liable for technical or editorial errors or omissions contained herein; nor for incidental or consequential damages resulting from the furnishing, performance, or use of this material. HII disclaims all responsibility for the selection and use of software and/or hardware to achieve intended results.

This document contains proprietary information that is protected by copyright. All rights are reserved. No part of this document may be photocopied, reproduced, or translated into another language without the prior written consent of HII.

Copyright © 2017-2021 Honeywell International Inc. All rights reserved.