



Voyager™ XP 1472g Series

Cordless Area-Imaging Scanner

Quick Start Guide

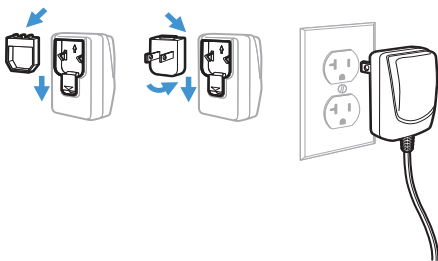
Note: Refer to your user's guide for information about cleaning your device.

For localized language versions of this document, go to www.honeywellaidc.com.

Getting Started

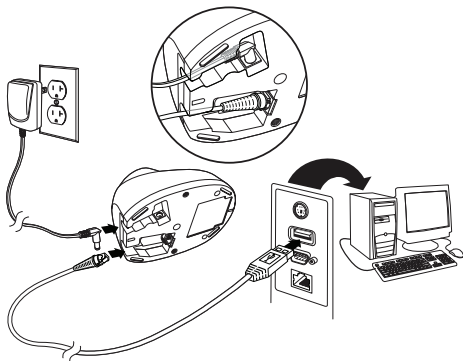
Turn off the computer's power before connecting the base, then power up the computer once the base is fully connected. When the base is connected and powered up, put the scanner in the base to establish a link. The green LED on the base flashes to indicate the scanner's battery is charging.

Power Supply Assembly (if included)

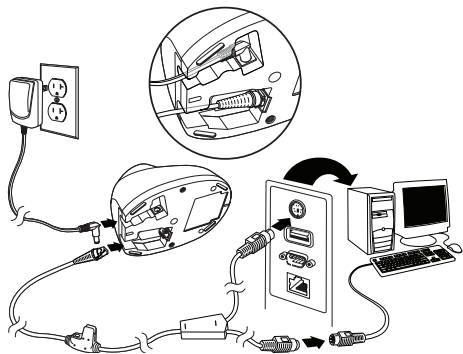


Note: The power supply must be ordered separately, if needed.

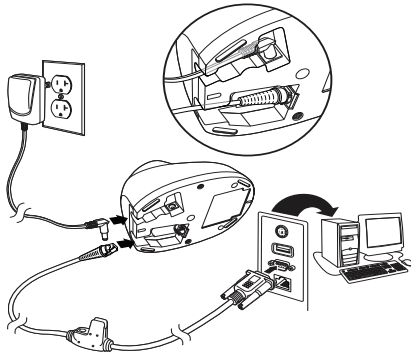
USB Connection:



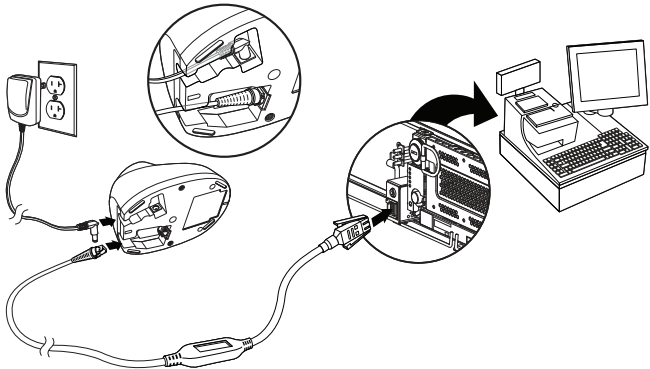
Keyboard Wedge Connection:



RS232 Serial Port Connection:



RS485 Connection:



Reading Techniques

The view finder projects an aiming dot that should be centered over the bar code, but it can be positioned in any direction for a good read.

Hold the scanner over the bar code, pull the trigger, and center the aiming dot on the bar code.

The aiming dot is smaller when the scanner is closer to the code and larger when it is farther from the code. Hold the scanner close to smaller bar codes, and farther away from large bar codes to get a proper read.

If the bar code is highly reflective (e.g., laminated), you may need to tilt the scanner at an angle so the bar code can be scanned.

Note: *If the scanner razzes when scanning a bar code, the link has not been established. If the scanner beeps once, the link has been established.*



Standard Product Defaults

The following bar code resets all standard product default settings.



Standard Product

Note: *PDF and 2D bar codes can only be read by Voyager model 1472g2D and cannot be read by model 1472g1D.*

RS485 Interface

The RS485 interface defaults to port 5B. If you have an IBM POS terminal using port 9B, scan the appropriate code below to program the terminal, then power cycle the cash register.



IBM Port 9B HHBCR-1
Interface



IBM Port 9B HHBCR-2
Interface

Note: For additional RS485 interface selections, see the User's Guide for your product.

USB Serial

Scan the following code to program the scanner to emulate a regular RS232-based COM Port. If you are using a Microsoft® Windows® PC, you will need to download a driver from the Honeywell website (www.honeywellaidc.com). The driver will use the next available COM Port number. Apple® Macintosh computers recognize the scanner as a USB CDC class device and automatically use a class driver.



USB Serial

Note: No extra configuration (e.g., baud rate) is necessary.

USB PC Keyboard

Scan the following code to program the scanner for a USB PC Keyboard.



USB PC Keyboard

Keyboard Country

Scan the appropriate country code that follows to program the keyboard layout for your country or language. By default, national character replacements are used for the following characters: # \$ @ [\] ^ ' { | } ~ Refer to the ISO 646 Character Replacements chart in your User Guide to view the character replacements for each country.



USA (Default)



Belgium



Denmark



Finland



France



Germany/Austria



Great Britain



Italy



Norway



Spain



Switzerland

Note: *For a complete list of country codes, see the User's Guide for your product.*

Locked Link

If you link a scanner to a base using the Locked Link Mode, other scanners are blocked from being linked if they are inadvertently placed into the base. If you do place a different scanner into the base, it will charge the scanner, but the scanner will not be linked.



Locked Link Mode
(Single Scanner)

To use a different scanner, you need to unlink the original scanner by scanning the Unlink Scanner bar code.

Override Locked Scanner

If you need to replace a broken or lost scanner that is linked to a base, scan the Override Locked Scanner bar code with a new scanner, and place that scanner in the base. The locked link will be overridden; the broken or lost scanner's link with the base will be removed, and the new scanner will be linked.



Override Locked Scanner

Unlinking the Scanner

If the base has a scanner linked to it, that scanner must be unlinked before a new scanner can be linked. Once the previous scanner is unlinked, it will no longer communicate with the base. Scan the Unlink Scanner bar code to unlink a scanner.



Unlink Scanner

Trigger

The following bar codes will allow you to use the scanner in **Manual Trigger - Normal Mode** (need to press the trigger to read) or **Presentation mode** (the scanner is activated when it “sees” a bar code).



Manual Trigger - Normal
(Default)



Presentation Mode

Suffix

If you want a carriage return after the bar code, scan the **Add CR Suffix** bar code. To add a tab after the bar code, scan the **Add Tab Suffix** bar code. Otherwise, scan the **Remove Suffix** bar code to remove the suffixes.



Add CR Suffix



Add Tab Suffix



Remove Suffix

Add Code ID Prefix to all Symbologies

Scan the following bar code if you wish to add a Code ID prefix to all symbologies at once.



Add Code ID Prefix To All Symbologies
(Temporary)

Note: For a complete list of Code IDs, see the *User's Guide for your product*.

Function Code Transmit

When this selection is enabled and function codes are contained within the scanned data, the scanner transmits the function code to the terminal. Charts of these function codes are provided in your *User's Guide*. When the scanner is in keyboard wedge mode, the scan code is converted to a key code before it is transmitted.



Enable
(Default)



Disable

Data Format Editor Instructions

The following are abbreviated instructions for entering a data format. For complete instructions refer to your *User's Guide*.

- Step 1. Scan the **Enter Data Format** symbol.
- Step 2. Primary/Alternate Format: scan **0** for Primary Format
- Step 3. Terminal Type: scan **099** for any terminal type
- Step 4. Code I.D.: scan **99** for any bar code type
- Step 5. Length: scan **9999** for any length bar code.
- Step 6. Editor commands: use the Programming Chart that follows.
- Step 7. Scan **Save** to save your entries.



Enter Data Format



Clear All Data Formats



Save

Programming Chart



0



1



2



3



4



5



6



7



8



9



A



B



C



D



E



F



Save

EZConfig-Scanning

To access additional features for the scanner, use EZConfig-Scanning, an online configuration software tool, available from our website.

Support

To search our knowledge base for a solution or to log into the Technical Support portal and report a problem, go to www.hsmcontactsupport.com.

Documentation

Product documentation is available at www.honeywellaidc.com.

Limited Warranty

For warranty information, go to www.honeywellaidc.com and click **Get Resources > Product Warranty**.

Patents

For patent information, see www.hsmpats.com.

Disclaimer

Honeywell International Inc. (“HII”) reserves the right to make changes in specifications and other information contained in this document without prior notice, and the reader should in all cases consult HII to determine whether any such changes have been made. The information in this publication does not represent a commitment on the part of HII.

HII shall not be liable for technical or editorial errors or omissions contained herein; nor for incidental or consequential damages resulting from the furnishing, performance, or use of this material. HII disclaims all responsibility for the selection and use of software and/or hardware to achieve intended results.

This document contains proprietary information that is protected by copyright. All rights are reserved. No part of this document may be photocopied, reproduced, or translated into another language without the prior written consent of HII.

Copyright © 2019 Honeywell International Inc. All rights reserved.