



Solaris 7980g/7990g

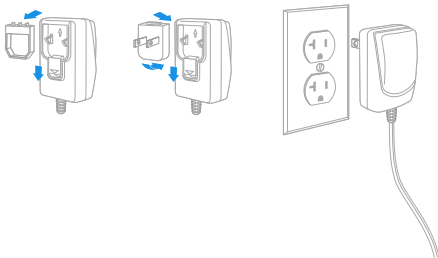
Presentation Area Imager

Quick Start Guide

Getting Started

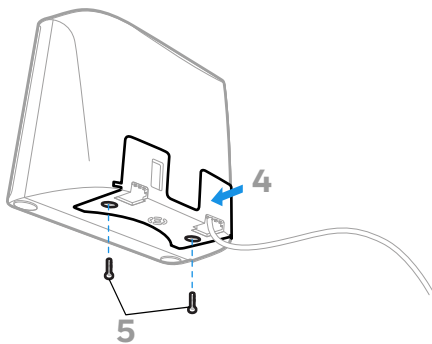
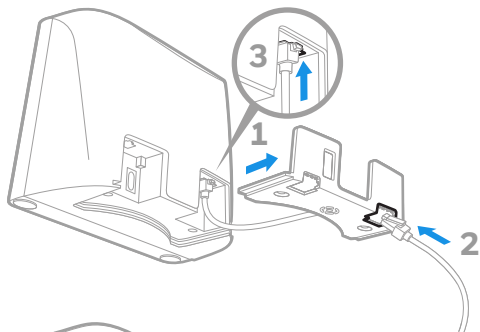
Turn off computer's power before connecting the scanner, then power up the computer once the scanner is fully connected.

Power Supply Assembly (if included)

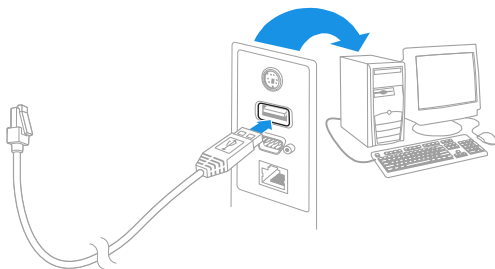


Note: *The power supply must be ordered separately, if needed.*

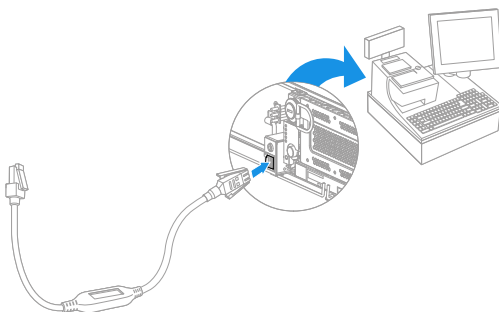
Connecting the Scanner (USB and RS485)



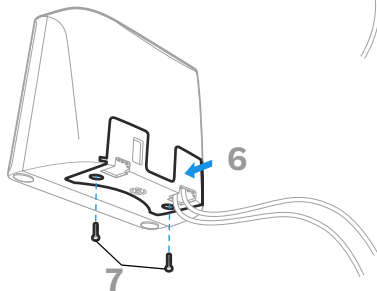
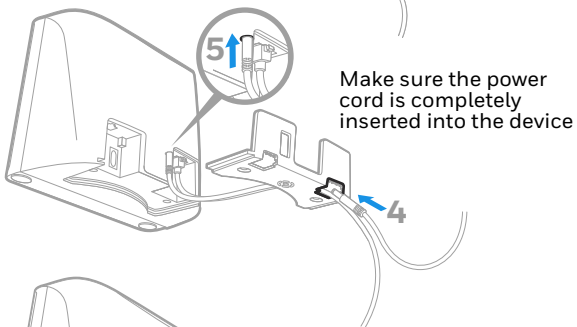
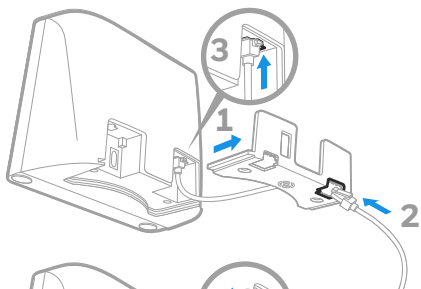
USB



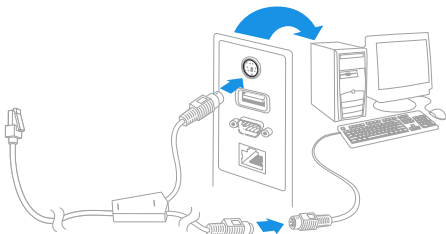
RS485



Connecting the Scanner (Keyboard Wedge and RS232 Serial Port)

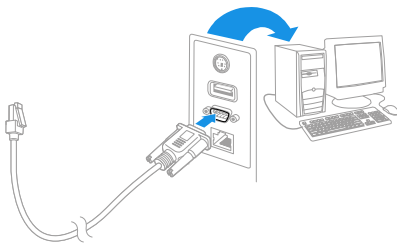


Keyboard Wedge



Note: For Keyboard Wedge, you must use the power supply.

RS232 Serial Port



Note: For RS232, you must use the power supply.

Reading Techniques

Present the barcode to the scanner. The aimer turns on and the LEDs turn up to read the code. If the light level in the room is not high enough, the code may not be read.

Standard Product Defaults

The following barcode resets all standard product default settings.



Standard Product Defaults

USB PC Keyboard

Scan the following code to program the scanner for a USB PC Keyboard.



USB PC Keyboard

RS485 Interface

The RS485 interface defaults to port 5B. If you have an IBM POS terminal using port 9B, scan the appropriate code below to program the terminal, then power cycle the cash register. If you have an IBM POS terminal using port 17, scan IBM Port 17 Interface barcode below.



IBM Port 9B HHBCR-1
Interface



IBM Port 9B HHBCR-2
Interface



IBM Port 17 Interface

Note: For additional RS485 interface selections, see the User Guide for your product at our website, sps.honeywell.com.

USB Serial



If you are using a Microsoft® Windows® PC, you must download a driver from the Honeywell website (honeywell.com/PSSsoftware-downloads). The driver will use the next available COM Port number.

Scan the following code to program the scanner to emulate a regular RS232-based COM Port. Apple® Macintosh computers recognize the scanner as a USB CDC class device and automatically use a class driver.



USB Serial

Note: No extra configuration (e.g., baud rate) is necessary.

Function Code Transmit

When this selection is enabled and function codes are contained within the scanned data, the scanner transmits the function code to the terminal. Charts of these function codes are provided in your User Guide. When the scanner is in keyboard wedge mode, the scan code is converted to a key code before it is transmitted.



Enable
(Default)



Disable

Keyboard Country

If your interface is USB Keyboard or Keyboard Wedge, your keyboard layout default is a US keyboard. To change this layout, refer to the chart below for your keyboard country. Scan the **Program Keyboard Country** barcode below, then scan the numeric barcode(s) for the appropriate Country Code from [page 13](#), then scan the **Save** barcode.

By default, national character replacements are used for the following characters: # \$ @ [\] ^ { | } ~ Refer to the ISO 646 Character Replacements chart in your User Guide to view the character replacements for each country.



Program Keyboard Country

Country Code	Scan	Country Code	Scan
Belgium	1	Italy	5
Denmark	8	Norway	9
Finland	2	Spain	10
France	3	Switzerland	6
Germany/ Austria	4	USA (Default)	0
Great Britain	7		



Save

Note: For a complete list of country codes, see the User Guide for your product at our website, sps.honeywell.com.

Turbo Mode

This selection is a keyboard modifier, so it may only be used when your interface is USB Keyboard or Keyboard Wedge. The scanner sends characters to a terminal faster using Turbo Mode. If the terminal drops characters, do not use Turbo Mode.



Turbo Mode On



Turbo Mode Off

Scan Modes

When in Presentation mode, the scanner is activated when it “sees” a barcode.

When in Streaming Presentation mode, the scanner leaves the scan illumination on all the time and continuously searches for barcodes.

When in Presentation - Mobile Phone mode, your scanner is optimized to read barcodes from mobile phone or other LED displays.



Presentation Mode



Streaming Presentation Mode



Presentation - Mobile Phone

Note: For additional scan modes, see the User Guide for your product at our website, sps.honeywell.com.

Suffix

If you want a carriage return after the barcode, scan the **Add CR Suffix** barcode. To add a tab after the barcode, scan the **Add Tab Suffix** barcode. Otherwise, scan the **Remove Suffix** barcode to remove the suffixes.



Add CR Suffix



Add Tab Suffix



Remove Suffix

Add Code ID Prefix to all Symbologies

Scan the following barcode if you wish to add a Code ID prefix to all symbologies at once.



Add Code ID Prefix To All Symbologies

Note: For a complete list of Code IDs, see the User Guide for your product at our website, sps.honeywell.com.

Poor Quality PDF Codes

This setting improves the scanner's ability to read damaged or badly printed PDF codes by combining information from multiple images. When **Poor Quality PDF On** is scanned, poor quality PDF code reading is improved, but the scanner's snappiness is decreased, making it less aggressive when reading good quality barcodes. This setting does not affect 1D barcode reading.



Poor Quality PDF Reading On



Poor Quality PDF Reading Off

Data Format Editor Instructions

The following are abbreviated instructions for entering a data format. For complete instructions refer to your User Guide, available at our website, sps.honeywell.com.

1. Scan the **Enter Data Format** symbol.
2. Primary/Alternate Format: scan **0** for Primary Format.
3. Terminal Type: scan **099** for any terminal type.
4. Code I.D.: scan **99** for any barcode type.
5. Length: scan **9999** for any length barcode.
6. Editor commands: use the Programming Chart that follows.
7. Scan **Save** to save your entries.



Enter Data Format



Clear All Data Formats



Save

Programming Chart



0



2



4



6



8



1



3



5



7



9



A



B



C



D



E



F



Save

Support

To search our knowledge base for a solution or to log into the Technical Support portal and report a problem, go to honeywell.com/PSStechnicalsupport.

Limited Warranty

For warranty information, go to sps.honeywell.com and click **Support > Productivity > Warranties**.

Patents

For patent information, see www.hsmpats.com.

User Documentation

For the user guide and other documentation, go to sps.honeywell.com.

Trademarks

Other product names or marks mentioned in this document may be trademarks or registered trademarks of other companies and are property of their respective owners.

Disclaimer

Honeywell International Inc. (“HII”) reserves the right to make changes in specifications and other information contained in this document without prior notice, and the reader should in all cases consult HII to determine whether any such changes have been made. HII makes no representation or warranties regarding the information provided in this publication.

HII shall not be liable for technical or editorial errors or omissions contained herein; nor for incidental or consequential damages resulting from the furnishing, performance, or use of this material.

This document contains proprietary information that is protected by copyright. All rights are reserved. No part of this document may be photocopied, reproduced, or translated into another language without the prior written consent of HII.

Copyright ©2023 Honeywell Group of Companies. All rights reserved.