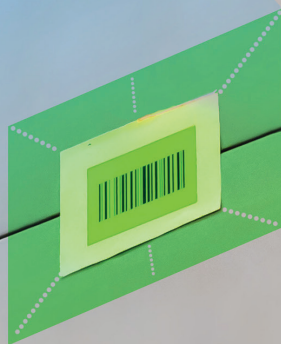


# WORK SMARTER WITH HONEYWELL LOGISTICS SENSING



**Honeywell**



## A PARTNER YOU CAN TRUST

As a global leader with over 40 years of scanning innovation, Honeywell serve customers in almost every industry. We have taken a lead role in designing, engineering and manufacturing vision solutions including optical scan engines, all-in-one modules and decoder boards. Our vision hardware and software solutions capture data and information at the edge, helping you make smarter decisions. By integrating Honeywell technology into your designs, you can improve operational productivity and performance, whilst delivering the best user experience and the highest levels of customer satisfaction.

## CONTENTS

Making contactless environments possible.....	3
Technology focused on your goals .....	4
Decoded and undecoded scan engines.....	5
Plug-and-play modules.....	6
SwiftDecoder™ software solutions.....	7
Why Honeywell.....	8

# MAKING CONTACTLESS ENVIRONMENTS POSSIBLE

Contactless technology, self-service applications and automation are transforming the way we live and work. As the world continues to change, Honeywell is constantly adapting and developing the latest vision solutions to support a wide range of industries and applications. Honeywell vision solutions can help you help you boost productivity and improve accuracy in your applications.



## ACCESS CONTROL

Make contactless entry possible in airports, parking garages, buildings, stadiums, arenas and other leisure venues.



## RETAIL

Increase efficiency across kiosks, smart lockers, reverse vending machines and mobile point-of-sale solutions.



## HEALTHCARE

Manage patient information to help reduce errors, prioritise safety and deliver the best care.



## TRANSPORTATION AND LOGISTICS

Track products, speed up procedures, and streamline operations – anytime, anywhere.



## WAREHOUSE AND DISTRIBUTION

Connect workers to enhance performance, optimise workflows, and improve productivity.



## HOSPITALITY AND EVENTS

Look after customers in a more personal way, and deliver the best possible experience.



## TECHNOLOGY FOCUSED ON YOUR GOALS

The Honeywell portfolio includes a wide range of vision solutions, from optical engines, to all-in-one modules, decoder boards and vision software. With decades of experience in scanning and decoding, our experts will work with your design engineers to understand your needs and solve any technical challenges. They will select the right products from entry and general level to more premium and specialized products for your specific applications, including bespoke designs and custom firmware to meet your exact requirements.

All our products are designed for easy integration and faster time to market with expert engineering support, tools and documentation. Together, this makes things easier for your team, and helps lower your total integration cost.

# DECODED & UNDECODED SCAN ENGINES

Honeywell scan engines work across fixed and mobile applications to scan quickly and accurately, even in the most challenging environments. Honeywell offers fully decoded engines as well as undecoded engines with the option of either a host decode or decoder board solution.

Our patented technology can read low quality barcodes due to damage, distortion, poor contrast or challenging package shapes and materials. With near and far reading ranges, compact dimensions, enhanced motion tolerance, a wide temperature range and power efficiency baked in, our high performance ultra-slim series is perfect for mobile designs. Whatever your application requirements, we have a product to help.



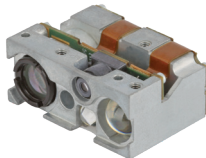
**DECODED**  
**N4680 Series**



**ULTRA SLIM**  
**FlexRange™ N6803 Series**



**COMPACT**  
**N4603 Series**



**EXTRA LONG RANGE**  
**Extended FlexRange™ Series**

Our engines provide high performance and reliability, increased scanning speeds and simple integration.

**For details on our full portfolio visit:**

[sps.honeywell.com/visionsolutions](https://sps.honeywell.com/visionsolutions)



# PLUG-AND-PLAY MODULES

With user experience in mind, our modules are ready-to-integrate solutions for fixed mount designs. We support a wide range of applications, including payment, healthcare, retail, self-service kiosk, lottery, access control, point of sale and industrial solutions.

Honeywell all-in-one modules come with standard interfaces, a housing and an exit window, fastening the integration into your design.



**CM Series**



**CF Series**



**HF Series**

Our self-contained module design simplifies installation and deployment, and offers many differentiating features that enhance your application performance.

***For details on our full portfolio visit:***

[sps.honeywell.com/visionsolutions](https://sps.honeywell.com/visionsolutions)



# SWIFTDECODER™ SOFTWARE SOLUTIONS

Honeywell's vision solutions powered by SwiftDecoder™ are used by some of the world's largest companies to scan millions of barcodes every day. Our vision software delivers the speed, range and accuracy to help boost performance. SwiftDecoder™ offers beyond barcode capabilities, including augmented reality, optical character recognition (OCR), and reading of boarding passes, passports and motor vehicle documents.

We support a wide range of camera-enabled devices including smartphones, tablets, PCs, payment terminals, drones, robotics, industrial and purpose-built devices. The SwiftDecoder™ solution is also compatible with major operating systems including iOS®, Android™, Windows® and Linux™, and wrappers like Xamarin™, Cordova™ and React Native™.

SwiftDecoder™ can also be coupled with Honeywell's C2100 Series camera module, an easy to integrate, enhanced performance device which fits into sleeker designs and supports beyond barcode capabilities.

SwiftDecoder™ is the perfect choice for developers, Independent Software Vendors (ISVs) and other OEMs who are looking to create barcode scanning applications or custom vision solutions.



## GET STARTED

**Request a free  
SwiftDecoder™ trial to  
get your project started.**



# WHY HONEYWELL?

- As a leading supplier for scan engines and modules – you can rely on us
  - With over 1,000 scanning and decoder patents – we bring innovation to your designs
  - We support all 1D and 2D barcodes approved by GS1 standards
  - All our products are manufactured in-house – providing the flexibility to adapt and respond quickly to market changes
  - Global reach with regional sales and technical support – for the best level of service
- You can count on Honeywell for powerful optical scan engines, all-in-one modules and vision software for use in a variety of industries and applications.
- Get in touch to discover the potential of Honeywell vision solutions. Contact a Honeywell Solutions Expert today:  
**[sps.honeywell.com/visionsolutions](https://sps.honeywell.com/visionsolutions)**

## WARRANTY/REMEDY

Honeywell warrants goods of its manufacture as being free of defective materials and faulty workmanship during the applicable warranty period. Honeywell's standard product warranty applies unless agreed to otherwise by Honeywell in writing; please refer to your order acknowledgment or consult your local sales office for specific warranty details. If warranted goods are returned to Honeywell during the period of coverage, Honeywell will repair or replace, at its option, without charge those items that Honeywell, in its sole discretion, finds defective. **The foregoing is buyer's sole remedy and is in lieu of all other warranties, expressed or implied, including those of merchantability and fitness for a particular purpose.** In no event shall Honeywell be liable for consequential, special, or indirect damages. While Honeywell may provide application assistance personally, through our literature and the Honeywell web site, it is buyer's sole responsibility to determine the suitability of the product in the application. Specifications may change without notice. The information we supply is believed to be accurate and reliable as of this writing. However, Honeywell assumes no responsibility for its use.

## FOR MORE INFORMATION

Honeywell Sensing and Safety Technologies services its customers through a worldwide network of sales offices and distributors. For application assistance, current specifications, pricing or the nearest Authorized Distributor, visit [our website](#) or call:

USA/Canada	+1 302 613 4491
Latin America	+1 305 805 8188
Europe	+44 1344 238258
Japan	+81 (0) 3-6730-7152
Singapore	+65 6355 2828
Greater China	+86 4006396841

iOS® is a trademark or registered trademark of Cisco in the U.S. and other countries.

Android™ is a trademark or registered trademark of Google LLC in the U.S. and other countries.

Windows® and Xamarin™ are trademarks or registered trademarks of Microsoft Corporation in the U.S. and other countries.

Linux® is a trademark or registered trademark of The Linux Foundation in the U.S. and other countries.

Cordova™ is a trademark or registered trademark of Shirley Fabrics Corporation in the U.S. and other countries.

React Native™ is a trademark or registered trademark of Facebook Inc. in the U.S. and other countries.

SwiftDecoder™ is a trademark of Honeywell International Inc.

All rights reserved. Honeywell and its product names are among the trademarks and/or servicemarks owned by Honeywell International Inc., or its subsidiaries. All other trademarks are property of their respective owners.

### Honeywell Sensing and Safety Technologies

830 East Arapaho Road  
Richardson, TX 75081  
[www.honeywell.com](http://www.honeywell.com)

007641-2-EN | 2 | 11/22  
© 2022 Honeywell International Inc.

**Honeywell**