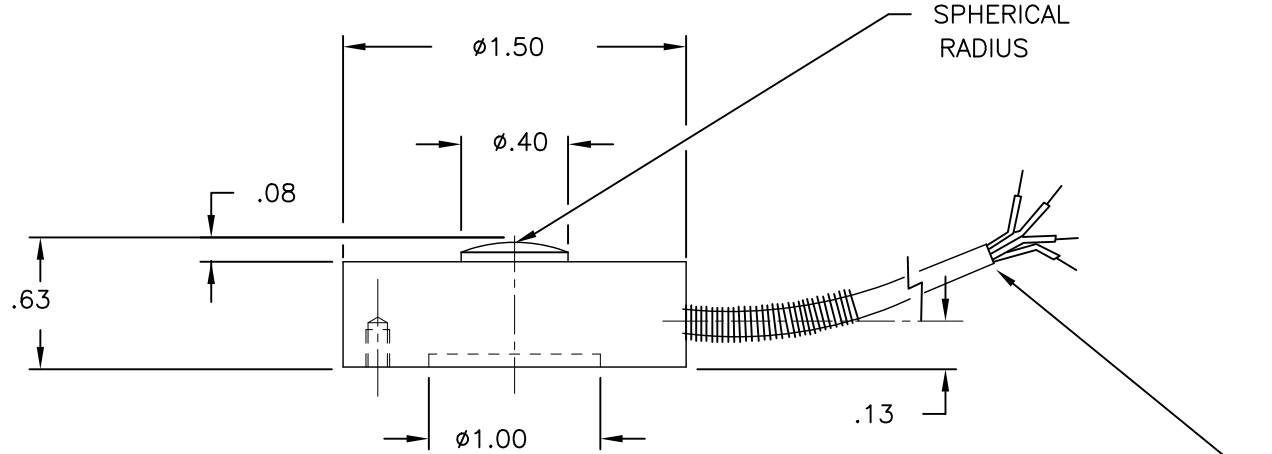


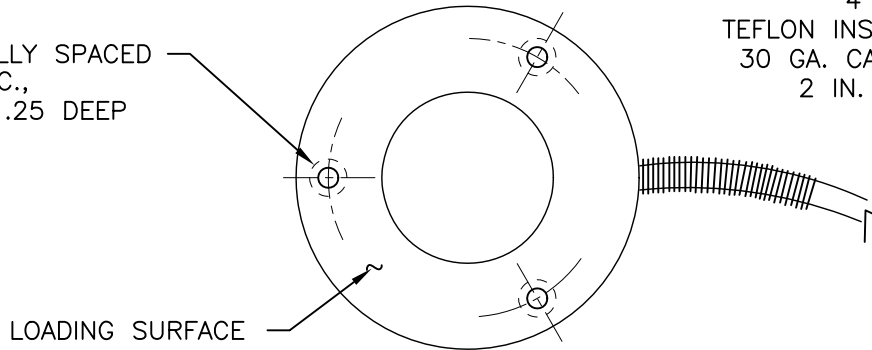
HONEYWELL PART NUMBER
-

REV	DOCUMENT	CHANGED BY	CHECK
E	42228	JDS 10/05/09	-



3 HOLES EQUALLY SPACED  
ON A ø1.25 B.C.,  
#6-32 UNC X .25 DEEP

4 CONDUCTOR, SHIELDED,  
TEFLON INSULATED, COLOR CODED,  
30 GA. CABLE: 5 FT. LONG,  
WITH 2 IN. SPRING STRAIN RELIEF,  
(ø.14 SPRING).



WIRING CODE

4 cond. cable, no amp	
RED	+EXCITATION
BLACK	-EXCITATION
GREEN	-OUTPUT
WHITE	+OUTPUT

DESIGN UNITS: INCH

TOLERANCES UNLESS NOTED:

NO PLACES	X	±	-
ONE PLACE	.X	±	.1
TWO PLACE	.XX	±	.01
THREE PLACE	.XXX	±	.005
ANGLES	X	±	.5°

THIRD ANGLE PROJECTION

DRAWN	JB	02/07/78
CHECK	-	-
THIS DRAWING COVERS A PROPRIETARY ITEM AND IS THE PROPERTY OF HONEYWELL. THIS DRAWING IS NOT TO BE COPIED OR USED WITHOUT THE PERMISSION OF HONEYWELL.		
INTERPRET PER ASME Y14.5M-1994 OTHER HONEYWELL ENGINEERING STANDARDS MAY APPLY		
AUTOCAD		

<b>Honeywell</b>				
TITLE MODEL 53 LOAD CELL 0-3000 LB THRU 0-12,500 LB STD. PROD.				
SIZE	TYPE	CAGE CODE	DRAWING NAME	REV
A	E	51518	000-0153-00	E
SCALE	-	SHEET		1 OF 1