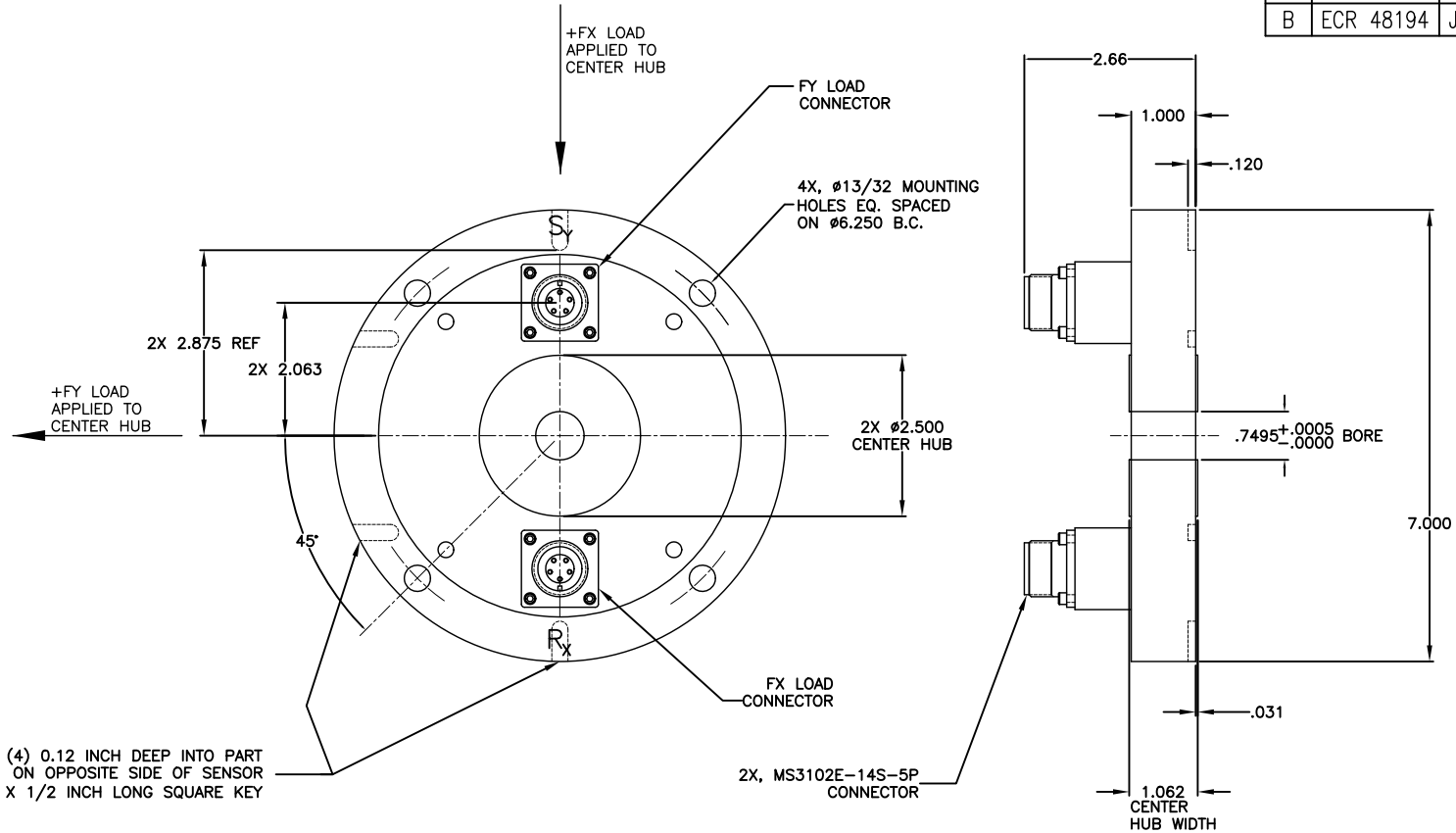


HONEYWELL
PART NUMBER

-

REV	DOCUMENT	CHANGED BY	CHECK
B	ECR 48194	JDS 06/22/2010	AJK



1/4 INCH KEYWAYS (4) 0.12 INCH DEEP INTO PART
ON OPPOSITE SIDE OF SENSOR
FOR 1/4 X 1/4 X 1/2 INCH LONG SQUARE KEY

SPECIFICATIONS

EXCITATION:	20 V MAX
OUTPUT:	2.0 mV/V +/- 0.25%
NONLINEARITY:	±.10% F.S.
HYSTERESIS:	±.10% F.S.
COMPENSATED TEMPERATURE RANGE:	+70°F TO +170°F
USABLE TEMPERATURE RANGE:	-65°F TO +200°F
TEMPERATURE EFFECT ON ZERO:	.002% F.S./°F
TEMPERATURE EFFECT ON SPAN:	.002% F.S./°F
BRIDGE RESISTANCE:	350 OHMS
MATERIAL:	4340 STEEL, NICKEL PLATED
CROSS TALK:	≤ 1% F.S.
SAFE OVERLOAD:	150%

UNAMP (NS) 5-PIN, 4-COND

PIN	DESIGNATION
A	(-) OUTPUT
B	(+) EXCITATION
C	(-) EXCITATION
D	(+) OUTPUT
E	N/C

DESIGN UNITS: INCH

TOLERANCES UNLESS NOTED:

NO PLACES	X	±	-
ONE PLACE	.X	±	.1
TWO PLACE	.XX	±	.01
THREE PLACE	.XXX	±	.005
ANGLES	X	±	.5°

THIRD ANGLE PROJECTION



DRAWN MORRIS 08/10/2007

CHECK AJK 08/22/2007

THIS DRAWING COVERS A PROPRIETARY ITEM AND IS THE PROPERTY OF HONEYWELL. THIS DRAWING IS NOT TO BE COPIED OR USED WITHOUT THE PERMISSION OF HONEYWELL.

INTERPRET PER ASME Y14.5M-1994 OTHER HONEYWELL ENGINEERING STANDARDS MAY APPLY

AUTOCAD

Honeywell

TITLE 6443 X-Y FORCE SENSOR
7" STANDARD, 0.750 BEARING BORE

SIZE	TYPE	CAGE CODE	DRAWING NAME	REV
B	E	51518	000-LW6443	B

SCALE - SHEET 1 of 1

SPECIFICATIONS

SPECIFICATIONS	STANDARD CAPACITIES				
	2K/1K	2K/500	1.5K/500	1000/500	
RADIAL (X-AXIS) LOAD CAPACITY:	2000 LB	2000 LB	1500 LB	1000 LB	
SIDE (Y-AXIS) LOAD CAPACITY:	1000 LB	500 LB	500 LB	500 LB	