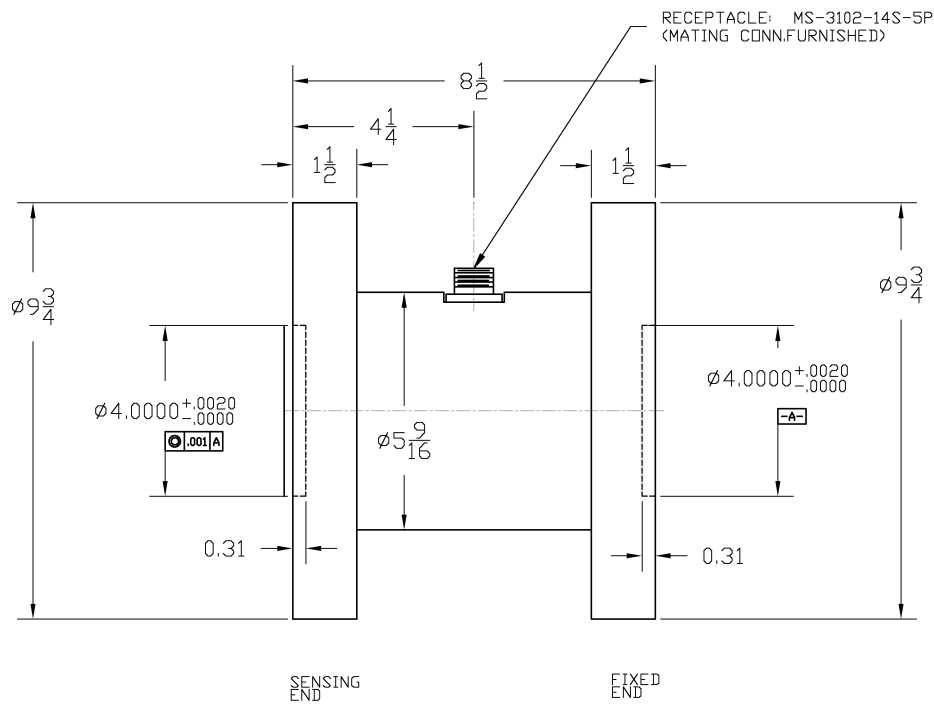
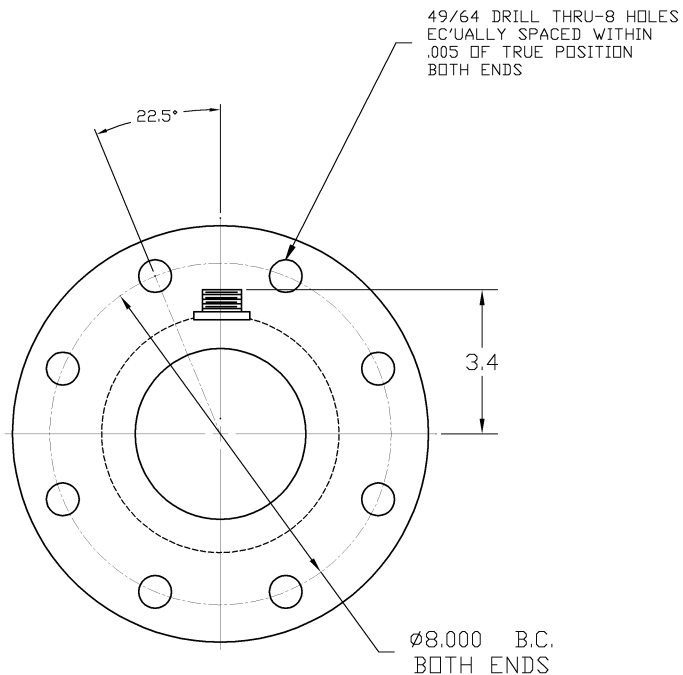


"NOTICE TO PERSONS RECEIVING THIS DRAWING AND/OR TECHNICAL INFORMATION"
 Lebow Products does hereby reserve the right to the extent decided hereon. This drawing and/or technical information is issued in confidence for engineering information only and may not be reproduced or used to manufacture anything shown or referred to hereon without direct written permission from Lebow Products to the user. This drawing and/or technical information is the property of Lebow Products and is loaned for mutual assistance, to be returned when its purpose has been served.

| | | |
|--|------------------------|--------|
| DO NOT SCALE DRAWING | C-2113-D | D REV. |
| ALL CHANGES TO DRAWING MUST BE DONE ON CAD | THIRD ANGLE PROJECTION | |



| DET. NO. | PART NO. | DESCRIPTION | REV'D. |
|--|------------------------------|--|-------------------------|
| | | Lebow Products Lebow Products Troy, Michigan | |
| UNLESS OTHERWISE SPECIFIED | | | |
| LINEAR DIMENSIONS ARE IN INCHES | | REMOVE ALL BURRS & SHARP EDGES | |
| ANGULAR DIMENSIONS ARE IN DEGREES | | SURFACE FINISH 125 ✓ | |
| DIMENSION LIMITS HELD AFTER PLATING | | | |
| TOLERANCES | | | DR. BY: ENGR. |
| SALLY | | | DATE: DATE: |
| DRILLED HOLES - .001 + .007 | TWO PLACE DECIMALS ± .005 | THREE PLACE DECIMALS ± .001 | ANGLES ± 0° 30' |
| SCALE: FULL | REF. DWG. C-12882 | FRACTIONAL DIMENSIONS ± 1/64 | MATL. ~ |
| DATE: 12/04/03 | | | MODEL: 2113 |
| TITLE: FLANGED TORQUE SENSOR NON ROTATING | | | DRAWING NO. C-2113-D |
| D REDRAW ON CAD 12/04/03 | | | REV. D |
| SYM. REVISIONS DATE | | | |

UNAMP#1,4-COND,CBL

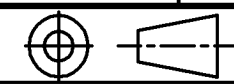
| COLOR | DESIGNATION |
|-------|---------------|
| RED | (+)EXCITATION |
| BLACK | (-)EXCITATION |
| GREEN | (-)OUTPUT |
| WHITE | (+)OUTPUT |

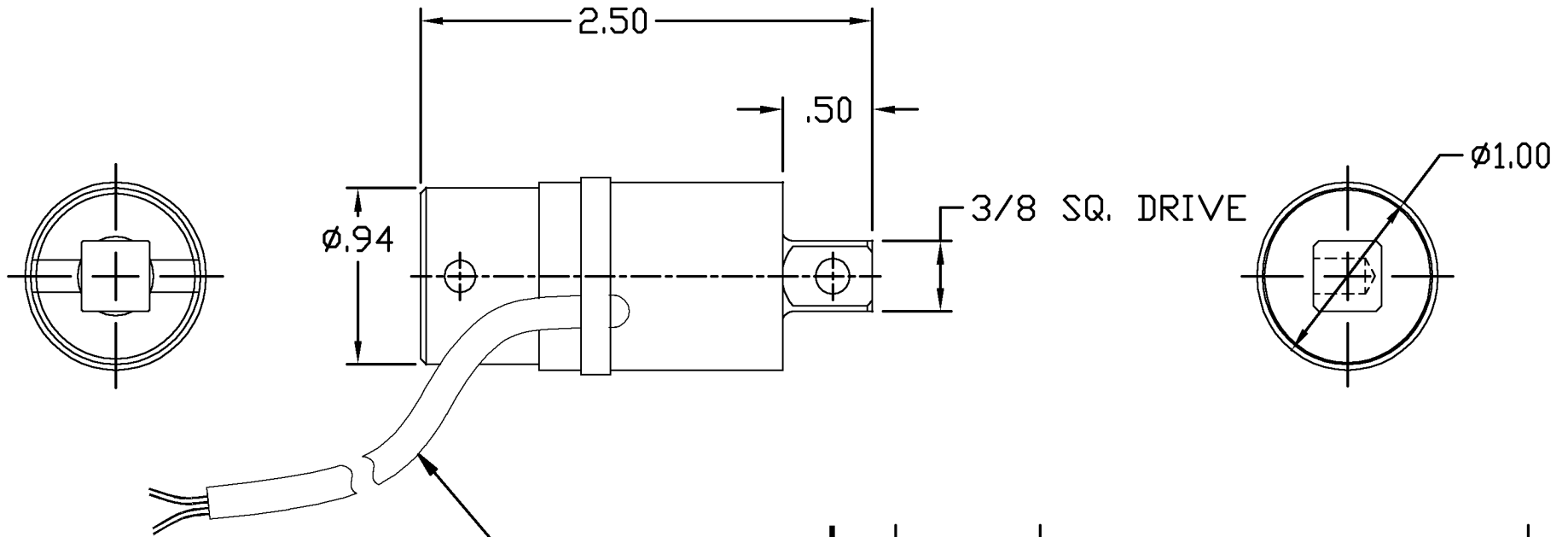
001-0333-01

UNAMP#2,4-COND,6-PIN

| PIN | DESIGNATION |
|------------|----------------------|
| A | (+)EXCITATION |
| B | (+)EXCITATION |
| C | (-)EXCITATION |
| D | (-)EXCITATION |
| E | (-)OUTPUT |
| F | (+)OUTPUT |

001-0333-02

| | | |
|--|---|------|
| DO NOT SCALE DRAWING | A-36086 | REV. |
| ALL CHANGES TO DRAWING MUST BE DONE ON CAD |  THIRD ANGLE PROJECTION | |



4 CONDUCTOR SHIELDED CABLE

NOTICE TO PERSONS RECEIVING THIS DRAWING AND/OR TECHNICAL INFORMATION
 Lebow Products claims proprietary rights to the material disclosed hereon. This drawing and/or technical information is issued in confidence for engineering information only and may not be reproduced or used to manufacture anything shown or referred to hereon without direct written permission from Lebow Products to the user. This drawing and/or technical information is the property of Lebow Products and is loaned for mutual assistance, to be returned when its purpose has been served.

| DET. NO. | PART NO. | DESCRIPTION | REQ'D. |
|---|---------------------------------|--|-------------------|
| | | Lebow Products Lebow Products Troy, Michigan | |
| UNLESS OTHERWISE SPECIFIED LINEAR DIMENSIONS ARE IN INCHES ANGULAR DIMENSIONS ARE IN DEGREES DIMENSION LIMITS HELD AFTER PLATING | | | |
| REMOVE ALL BURRS & SHARP EDGES SURFACE FINISH 125 | | | |
| TOLERANCES | | DR. BY: KJB | ENGR. BG |
| DRILLED HOLES -0.00 +0.07 | TWO PLACE DECIMALS ± 0.00 | THREE PLACE DECIMALS ± 0.005 | ANGLES ± 0 30' |
| DATE: 5/9/02 | DATE: 5/22/02 | DATE: | DATE: |
| SCALE: NONE | REF. DWG. B-36083 | FRACTIONAL DIMENSIONS ± 1/64 | MAT'L. NOTED |
| MODEL: 2133-302 | | MODEL: | |
| TITLE: □□ | | DRAWING NO. A-36086 | REV. |

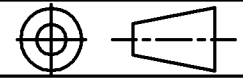
DESCRIPTION
 REVISIONS
 DATE
 APPV'D.
 CHG'D.
 ECN NO.
 SYM.

DO NOT SCALE
DRAWING

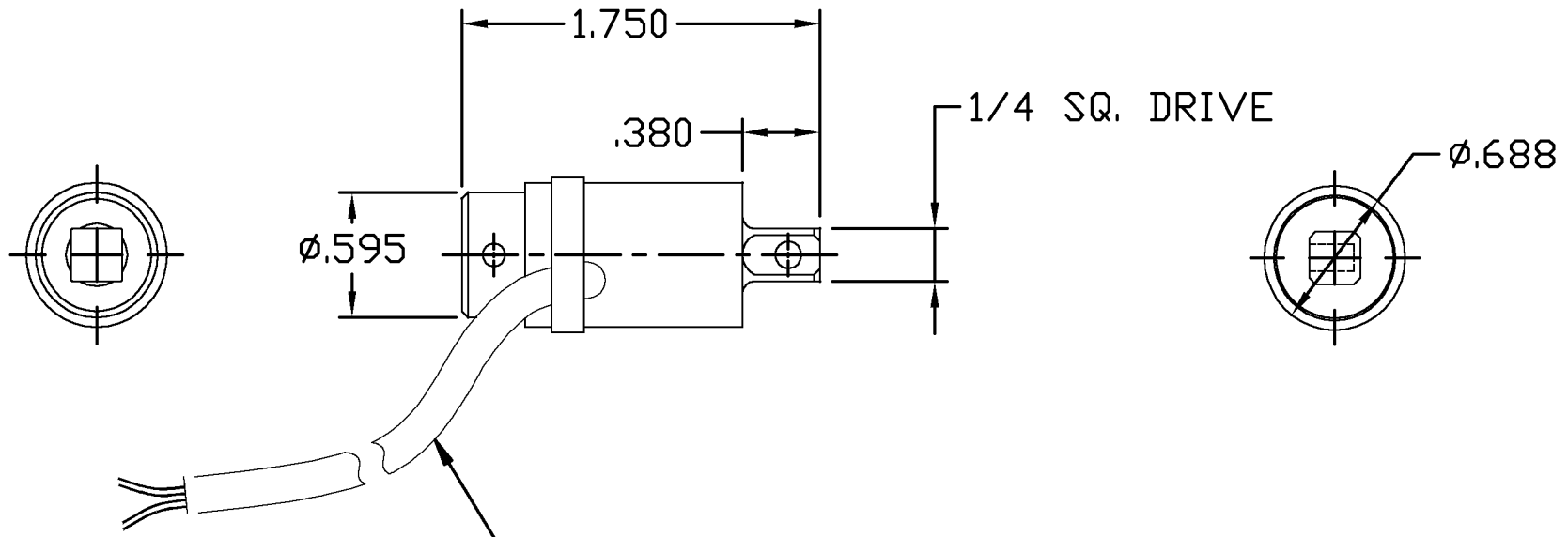
A-36085

REV.

ALL CHANGES TO
DRAWING MUST BE
DONE ON CAD



THIRD ANGLE PROJECTION

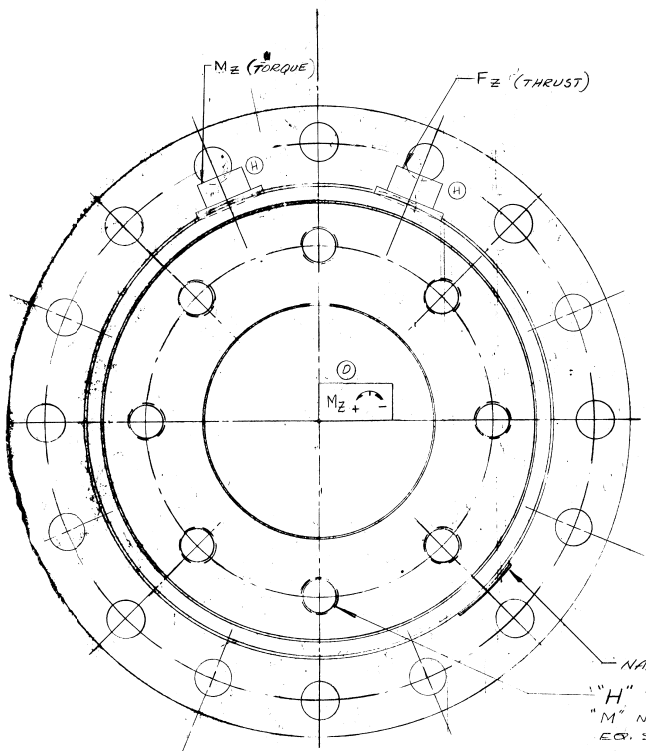


4 CONDUCTOR SHIELDED CABLE

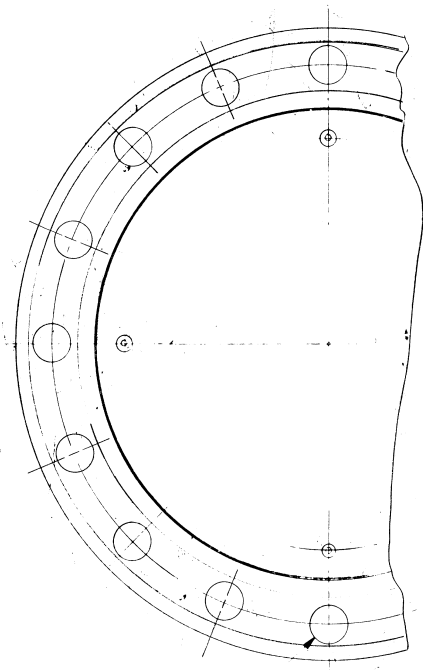
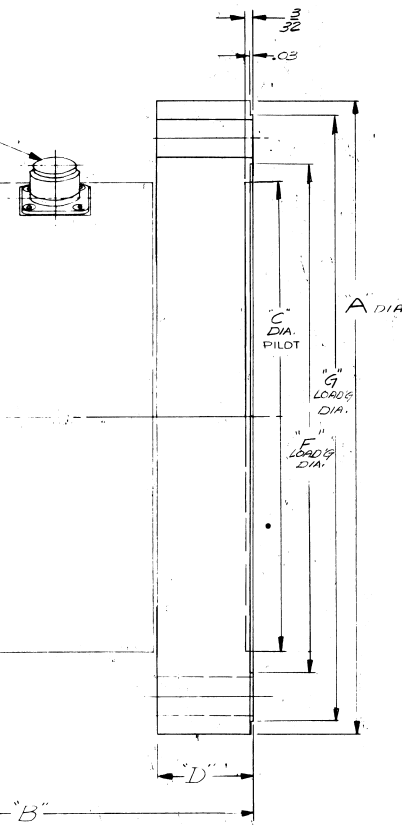
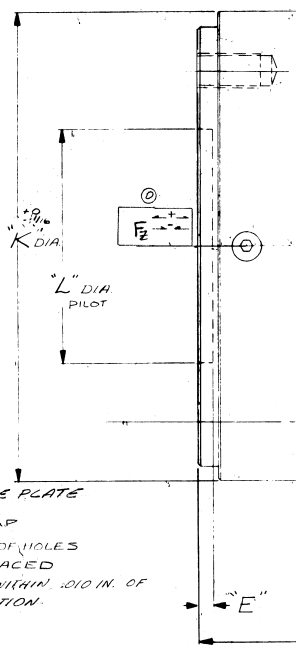
| DET. NO. | PART NO. | DESCRIPTION | REQ'D. |
|---|---------------------------------|------------------------------------|---------------------------------|
| | | Lebow Products Troy, Michigan | |
| UNLESS OTHERWISE SPECIFIED LINEAR DIMENSIONS ARE IN INCHES ANGULAR DIMENSIONS ARE IN DEGREES DIMENSION LIMITS HELD AFTER PLATING | | | |
| TOLERANCES | | | DR. BY: KJB CHK'D. BY: ENGR. |
| DRILLED HOLES ±0.007 | TWO PLACE DECIMALS ±0.010 | THREE PLACE DECIMALS ±0.005 | ANGLES ± 0 30' |
| SCALE: NONE | REF. DWG. B-36083 | FRACTIONAL DIMENSIONS ± 1/64 | MAT'L. NOTED |
| DATE | APPV'D. | CHG'D. | ECN NO. |
| | | | SYM. |
| TITLE: O.D. | | DRAWING NO. A-36085 | REV. |

**"NOTICE TO PERSONS RECEIVING THIS
DRAWING AND/OR TECHNICAL INFORMATION"**
Lebow Products claims proprietary rights to the material disclosed hereon. This drawing and/or technical information is issued in confidence for engineering information only and may not be reproduced or used to manufacture anything shown or referred to hereon without direct written permission from Lebow Products to the user. This drawing and/or technical information is the property of Lebow Products and is loaned for mutual assistance, to be returned when its purpose has been served.

| | | | |
|---|------------|---------|---------|
| N | ADDED -123 | 7-1-92 | D-17358 |
| P | ADDED -126 | 3/22/92 | |
| R | ADDED 124 | 8/2/99 | |



RECEPT *MS-3102A-MS-5P
(MATING CONN. FURN) 2 PLACES



NAME PLATE
"H" TAP
"M" NO. OF HOLES
EQ. SPACED
LOCATION WITHIN .010 IN. OF
TRUE POSITION.

"N"
LOCATION WITHIN .010 IN. OF TRUE POSITION

| MODEL NR | A | B | C | D | E | F | G | H | J | K | L | M | N | P | Q | R |
|----------|--------|--------|----------------|-------|-----|--------|---------|------------------------------------|--------|--------|-------------|----|--|------------------------|---------------------|-----|
| 6467-124 | 7 3/8 | 5.25 | 5.246 5.248 | 1 3/4 | 1/4 | 5 7/8 | 7 1/8 | 1/2-13 UNC-.38 ON B.C. 3/4 DEEP | 22 1/2 | 5 7/16 | 2.500/2.502 | 4 | 27/64 DIA. 16 HOLES ON A 6.500 B.C. EQ SPACED | 2,500 | 5,000 | (R) |
| 6467-126 | 7 3/8 | 5.25 | 5.246 5.248 | 1 3/4 | 1/4 | 5 7/8 | 7 1/8 | 1/2-13 UNC-.38 ON B.C. 3/4 DEEP | 22 1/2 | 5 7/16 | 2.500/2.502 | 4 | 27/64 DIA. 16 HOLES ON A 6.500 B.C. EQ SPACED | 1,000 | 10,000 | (P) |
| 6467-123 | 7 3/8 | 5.25 | 5.246 5.248 | 2 3/4 | 1/4 | 5 7/8 | 7 1/8 | 1/2-13 UNC-.38 ON B.C. 3/4 DEEP | 22 1/2 | 5 7/16 | 2.500/2.502 | 4 | 27/64 DIA. 16 HOLES ON A 6.500 B.C. EQ SPACED | 50 N.M. (442.5 IN-LB) | 20 K.N (4494 LBS) | (N) |
| 6467-122 | 7 3/8 | 5.25 | 5.246 5.248 | 2 3/4 | 1/4 | 5 7/8 | 7 1/8 | 1/2-13 UNC-.38 ON B.C. 3/4 DEEP | 22 1/2 | 5 7/16 | 2.500/2.502 | 4 | 27/64 DIA. 16 HOLES ON A 6.500 B.C. EQ SPACED | 500 N.M. (4225 IN-LB) | 63 K.N (14,163 LBS) | (M) |
| 6467-121 | 7 3/8 | 5.25 | 5.246 5.248 | 2 3/4 | 1/4 | 5 7/8 | 7 1/8 | 1/2-13 UNC-.38 ON B.C. 3/4 DEEP | 22 1/2 | 5 7/16 | 2.500/2.502 | 4 | 27/64 DIA. 16 HOLES ON A 6.500 B.C. EQ SPACED | 200 N.M. (1,770 IN-LB) | 63 K.N (14,163 LBS) | (L) |
| 6467-116 | 7 3/8 | 5.25 | 5.246 5.248 | 2 3/4 | 1/4 | 5 7/8 | 7 1/8 | 1/2-13 UNC-.38 ON B.C. 3/4 DEEP | 22 1/2 | 5 7/16 | 2.500/2.502 | 4 | 27/64 DIA. 16 HOLES ON A 6.500 B.C. EQ SPACED | 2,200/5000 | 22000/25000 | (K) |
| 6468-111 | 10 3/4 | 8.500 | 7.996 7.998 | 2 3/4 | 3/8 | 8 1/2 | 10 3/8 | 1/2-13 UNC-.38 ON B.C. 3/4 DEEP | 11 1/4 | 8.0 | 4.000/4.004 | 8 | 1/2 DIA. 16 HOLES ON A 6.500 B.C. EQ SPACED | 20,000 | 20,000 | (J) |
| 6467-105 | 7 3/8 | 5.25 | 5.246 5.248 | 1 3/4 | 1/4 | 5 7/8 | 7 1/8 | 1/2-13 UNC-.38 ON B.C. 3/4 DEEP | 22 1/2 | 5 7/16 | 2.500/2.502 | 4 | 27/64 DIA. 16 HOLES ON A 6.500 B.C. EQ SPACED | 17K | 2.5K 3K 5K 6K | (I) |
| 6468-107 | 10 3/4 | 8.500 | 7.996 7.998 | 2 3/4 | 1/4 | 8 1/2 | 10 3/8 | 1/2-13 UNC-.38 ON B.C. 3/4 DEEP | 11 1/4 | 8.0 | 4.000/4.004 | 8 | 1/2 DIA. 16 HOLES ON A 6.500 B.C. EQ SPACED | 20,000 | 25,000 | (H) |
| 6470 | 10 3/4 | 11.000 | 7.996 7.998 | 3 3/4 | 1/4 | 13.0 | 15 1/2 | 1/2-13 UNC-.38 ON B.C. 3/4 DEEP | 11 1/4 | 12" | 5.000/5.004 | 12 | 1/2 DIA. 16 HOLES ON A 6.500 B.C. EQ SPACED | 100,000 | 200,000 | (G) |
| 6469 | 10 3/4 | 10.000 | 7.996 7.998 | 3.0 | 1/4 | 8 3/16 | 10 7/16 | 1/2-13 UNC-.38 ON B.C. 3/4 DEEP | 11 1/4 | 8" | 4.000/4.004 | 8 | 1/2 DIA. 16 HOLES ON A 6.500 B.C. EQ SPACED | 50,000 | 100,000 | (F) |
| 6468 | 10 3/4 | 8.500 | 7.996 7.998 | 2 3/4 | 1/4 | 8 1/16 | 10 3/8 | 1/2-13 UNC-.38 ON B.C. 3/4 DEEP | 11 1/4 | 8" | 4.000/4.004 | 8 | 1/2 DIA. 16 HOLES ON A 6.500 B.C. EQ SPACED | 10,000 | 25,000 | (E) |
| 6467 | 7 3/8 | 5.25 | 5.246 5.248 | 1 3/4 | 1/4 | 5 7/8 | 7 1/8 | 1/2-13 UNC-.38 ON B.C. 3/4 DEEP | 22 1/2 | 5 7/16 | 2.500/2.502 | 4 | 27/64 DIA. 16 HOLES ON A 6.500 B.C. EQ SPACED | 5,000 | 10,000 | (D) |
| MODEL NR | A | B | C | D | E | F | G | H | J | K | L | M | N | P | Q | R |

SPECIFICATIONS
OUTPUT @ RATED FATIGUE CAPACITY
1.5 MV/VOLT NOM. (1 MV/VOLT FOR -123) (N)
BRIDGE RESISTANCE 700Ω

| REV. | NO. | DATE | DESCRIPTION |
|------|-------------------|----------|-------------|
| M | ADDED -122 | 5-22-92 | |
| L | ADDED -121 | 4-14-92 | |
| K | ADDED NEW SENSOR | 3-21-88 | |
| J | ADDED 6467-116 | 5-28-88 | |
| H | ECN 3117 | 7-27-87 | |
| G | ECN 3095 | 11-22-86 | |
| F | MODIFIED 6468-111 | 6-21-86 | |
| E | ADDED 6467-105 | 6-26-85 | |
| D | ECN 3455, 110 | 11-23-79 | |
| C | ECN 2875 | 11-23-79 | |
| B | ECN 2852 | 7-23-79 | |
| A | ECN 2145 | 5-23-79 | |
| M | DESCRIPTION | DATE | |

INSTALLATION

TORQUE & THRUST SENSORS

LOW ASSOCIATED, INC. D-17358

| CHG. | REMARKS | DATE |
|------|-----------------------|----------------|
| | CORRECTED VIEWS | 5/2/64 |
| A | WAS TOOL - ADDED NOTE | 3/9/64 |
| B | WAS TO | 6/10/60 |
| C | ADDED FLANGE DISCONT. | 3/16/76 |
| D | ADDED 9K CAPACITY | 6/25/82 |
| E | ADDED 24K & 48K | 8-14-87 TMW |

C-2320-D

NOTICE TO PERSONS RECEIVING THIS DRAWING AND/OR TECHNICAL INFORMATION
 Eaton Corporation does not warrant fitness to the material described herein. This drawing and its technical information is issued in confidence for the exclusive use of the user and may not be reproduced or used for any other purpose without the written consent of Eaton Corporation. The drawing and/or technical information is the property of Eaton Corporation and is loaned for mutual assistance, to be returned when no longer has been needed.

SCANNED
 8/14/87

RECEPTACLE
 M5-3102A-145-5P

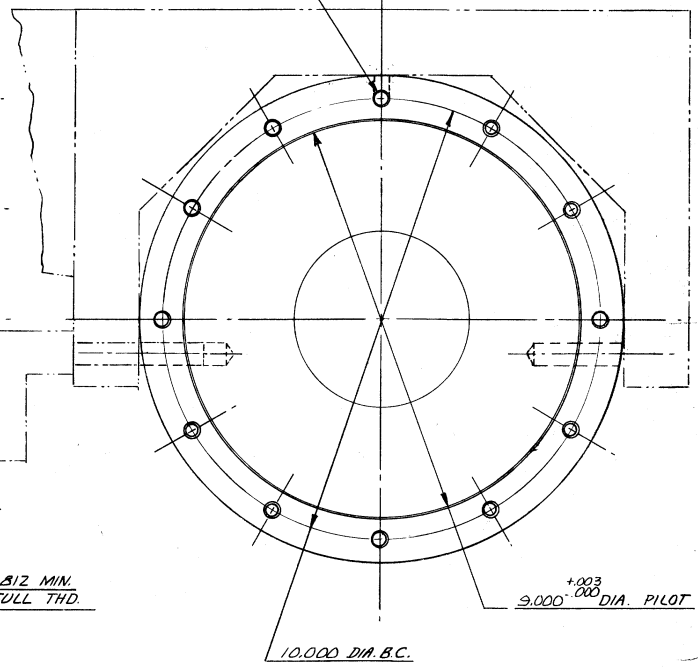
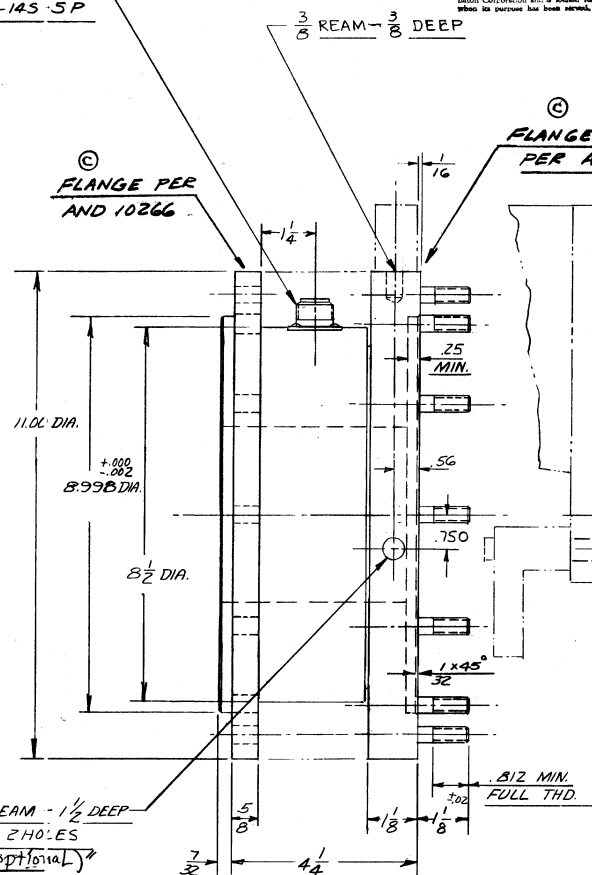
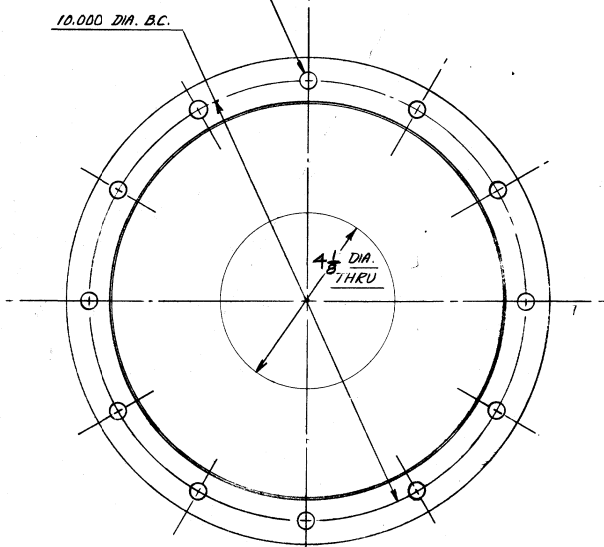
$\frac{13}{32}$ DIA HOLE - THRU
 12 HOLES EQUALLY SPACED
 WITHIN .007 OF TRUE POSITION

FLANGE PER
 AND 10266

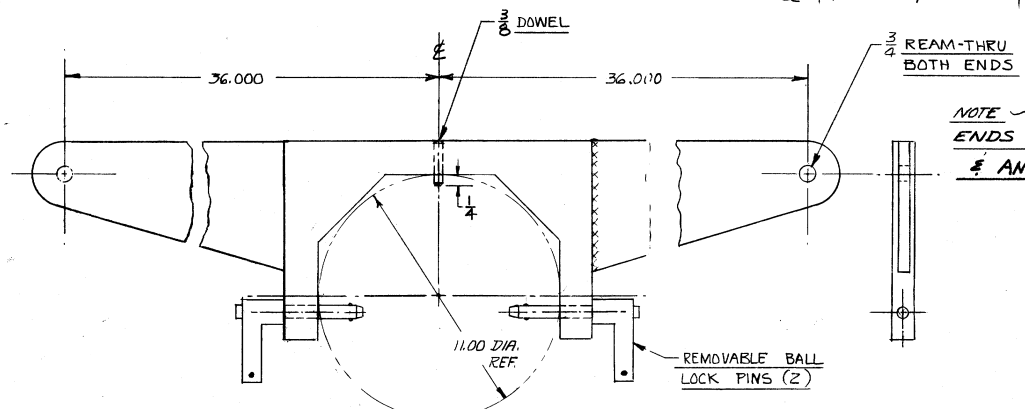
FLANGE & STUDS
 PER AND 20006

$\frac{3}{8}$ - 24 UNF-3A - 12 STUDS EQUALLY SPACED
 WITHIN .007 OF TRUE POSITION

VERTICAL & FOR
 MOUNTING



CALIBRATION ARM (optional)



NOTE -
 ENDS PER AND 20006 STD.
 & AND 10266 AS SHOWN

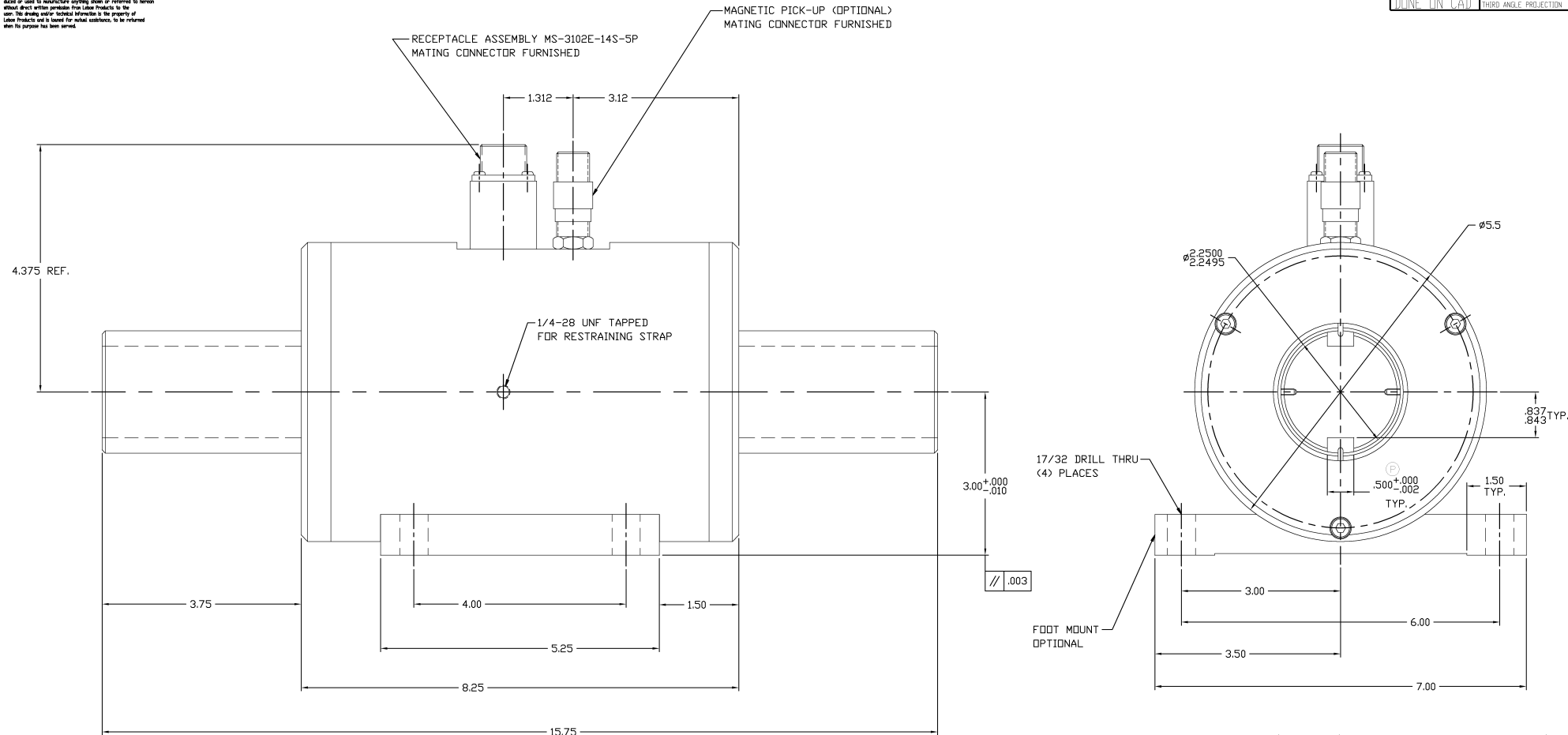
(E) CAPACITIES AVAILABLE: 9K, 12K, 24K, 36K, 48K IN LBS
 OUTPUT — 1.5 MV/VOLT @ RATED CAP
 BRIDGE — 350 OHMS

SPECIFICATIONS

| DET. NO. | PART NO. | DESCRIPTION | REQ'D. |
|--|-------------------|--|------------------------------|
| | | OUTSIDE MOUNTING DIMENSIONS OF MODEL *2320 CO-AXIAL T.R.U. | |
| SCALE: HALF | DRAWN BY: F. ZINK | REV. DWD: 11751 | MATL: |
| DATE: 11-20-63 | CHK'D BY: | MODEL: 2320 | JOB NO: |
| UNLESS OTHERWISE SPECIFIED: | | | |
| TWO PLACE DECIMALS | : .010 | TOLERANCES ON DRILL HOLES PER LEBOW SPEC / MG-101 | |
| THREE PLACE DECIMALS | : .005 | REMOVE ALL BURRS & SHARP EDGES | |
| ANGLES: 0° - 30° | | DIMENSION LIMITS HELD AFTER PLATING | |
| | | SURFACE FINISH 125 | |
| LEBOW ASSOCIATES, INC. TROY, MICHIGAN | | | DRAWING NO. C-2320-D REV. |

NOTICE TO PERSONS RECEIVING THIS DRAWING AND/OR TECHNICAL INFORMATION:
 Lebow Products shall retain all rights in the material disclosed herein. The drawing and/or technical information is issued in confidence for engineering information only and may not be reproduced or used by manufacturer, supplier, dealer or person without direct written permission from Lebow Products to the contrary. The drawing and/or technical information is the property of Lebow Products and is loaned for actual assistance, to be returned when the purpose has been served.

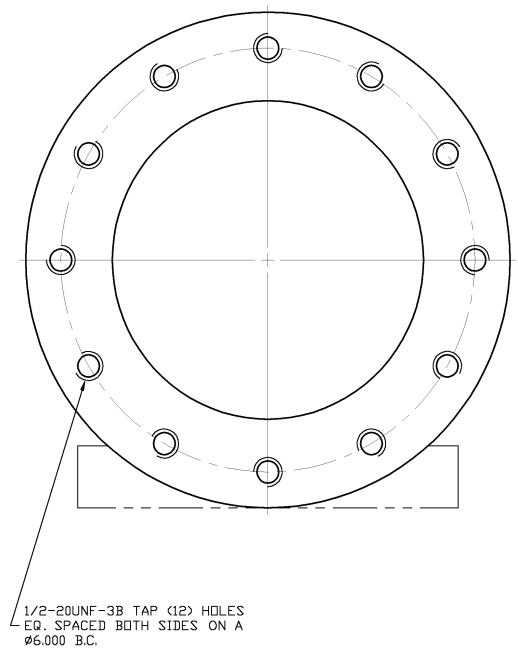
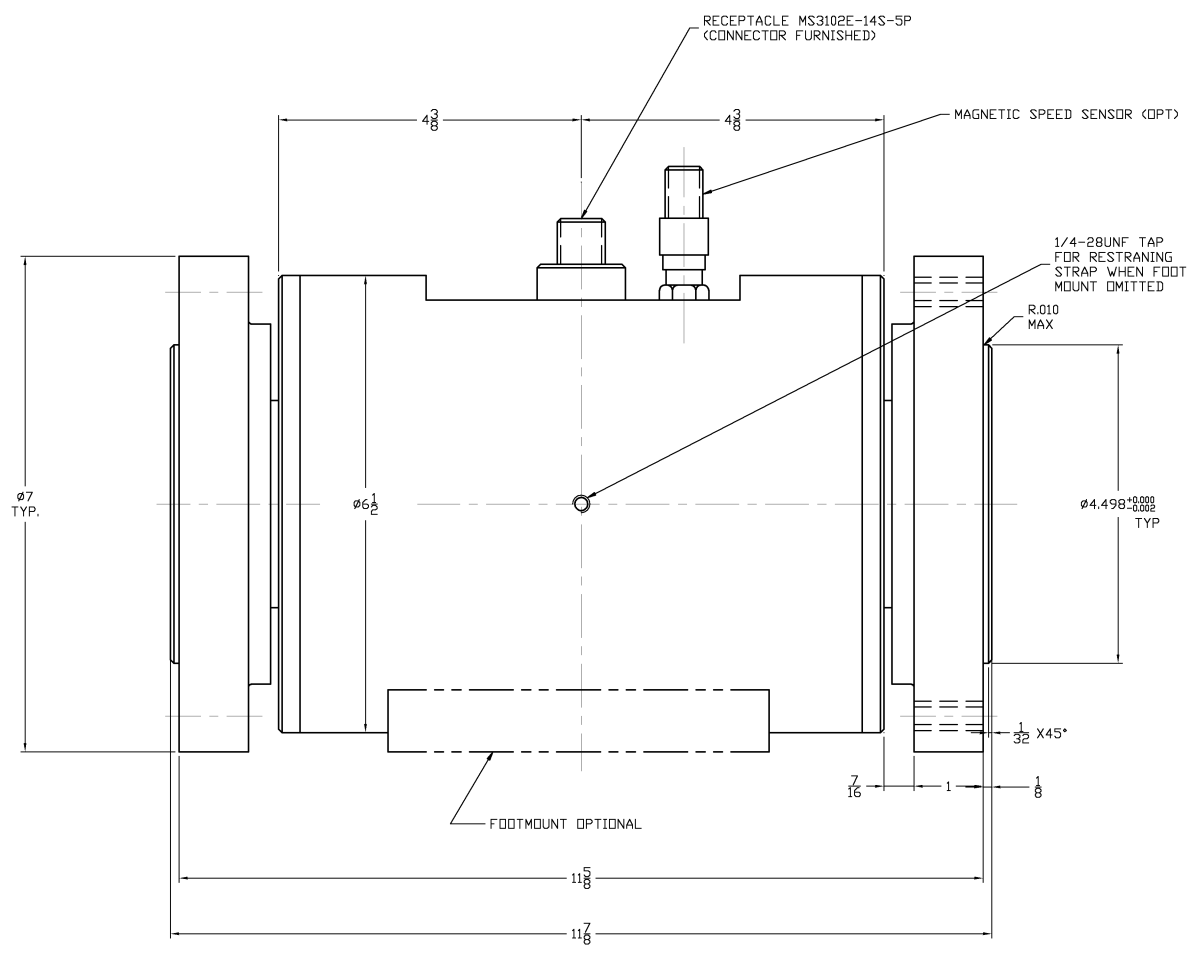
| | | |
|---|------------------------|-----|
| DO NOT SCALE DRAWING | D-1606-D | REV |
| ALL CHANGES TO DRAWING MUST BE DONE IN C.A.D. | THIRD ANGLE PROJECTION | |



| | | |
|----------|-----------------|---------------|
| 1606-20K | 20,000 L.B. IN. | 300% |
| 1606-10K | 10,000 L.B. IN. | 300% |
| 1606-5K | 5,000 L.B. IN. | 300% |
| MODEL | CAPACITY | OVERLOAD CAP. |

| | | | |
|---|--------------------------------|--|-------------------|
| REV. NO. | PART NO. | DESCRIPTION | QTY. |
| | | Lebow Products Lebow Products Troy, Michigan | |
| UNLESS OTHERWISE SPECIFIED LINEAR DIMENSIONS ARE IN INCHES REMOVE ALL BURRS & ANGULAR DIMENSIONS ARE IN DEGREES SHARP EDGES DIMENSION LIMITS HELD AFTER PLATING SURFACE FINISH 125 ✓ | | | |
| TOLERANCES | | | |
| DRILLED HOLES H9 | TWO PLACE DECIMALS ± .01 | THREE PLACE DECIMALS ± .005 | ANGLES ± 0.30° |
| DATE | DATE | DATE | DATE |
| 4/20/79 | | | |
| SCALE | REF. DIMS | FRACTIONAL DIMENSIONS 1/64 | MATL. 1606 |
| NONE | D-27623 | | |
| TITLE | DRAWING NO. | | REV. |
| O.D. DRAWING | D-1606-D | | |

NOTICE TO PERSONS RECEIVING THIS DRAWING AND/OR TECHNICAL INFORMATION
 Lebow Products claims proprietary rights to the material disclosed herein. This drawing and/or technical information is issued in confidence for engineering information only and may not be reproduced or used to manufacture anything shown or referred to herein without direct written permission from Lebow Products to the user. This drawing and/or technical information is the property of Lebow Products and is loaned for mutual assistance, to be returned when its purpose has been served.



| | | |
|------|--------------------------|----------|
| G | ADDED OPTIONAL FOOTMOUNT | 9/10/04 |
| F | REDRAW ON CAD | 12/04/03 |
| SYM. | REVISION | DATE |

| | | | |
|---|---------------------------------|------------------------------------|---------------------|
| DET. NO. | PART NO. | DESCRIPTION | REV'D. |
| Lebow Products | | Lebow Products Troy, Michigan | |
| UNLESS OTHERWISE SPECIFIED LINEAR DIMENSIONS ARE IN INCHES ANGULAR DIMENSIONS ARE IN DEGREES DIMENSION LIMITS HELD AFTER PLATING REMOVE ALL BURRS & SHARP EDGES SURFACE FINISH 125 ✓ | | | |
| TOLERANCES | | DR. BY: SALLY | CHK'D. BY: ENGR. |
| DRILLED HOLES - .000 + .007 | TWO PLACE DECIMALS ± .005 | THREE PLACE DECIMALS ± .002 | ANGLES ± 0 30' |
| SCALE: FULL | REF. DWG. D-22586 | FRACTIONAL DIMENSIONS ± 1/64 | MAT'L ~ |
| DATE: 12/04/03 | | DATE: | DATE: |
| MODEL: 1641 | | DRAWING NO. D-1641-D | |
| TITLE: INSTALLATION~ ROTARY TRANSFORMER TORQUE SENSOR | | | REV. |

| MODEL NO | TORQUE CAP | "A" DIA | OVERLAP CAPACITY | C-1102-D |
|-----------|------------|---------|------------------|----------|
| 1102-50 | 50 IN OZ | .375 | 150 IN OZ | |
| 1102-100 | 100 IN OZ | .375 | 300 IN OZ | |
| 1102-200 | 200 IN OZ | " | 600 IN OZ | |
| 1102-500 | 500 IN OZ | " | 1000 IN OZ | |
| 1102-1000 | 1000 IN OZ | " | 1500 IN OZ | |

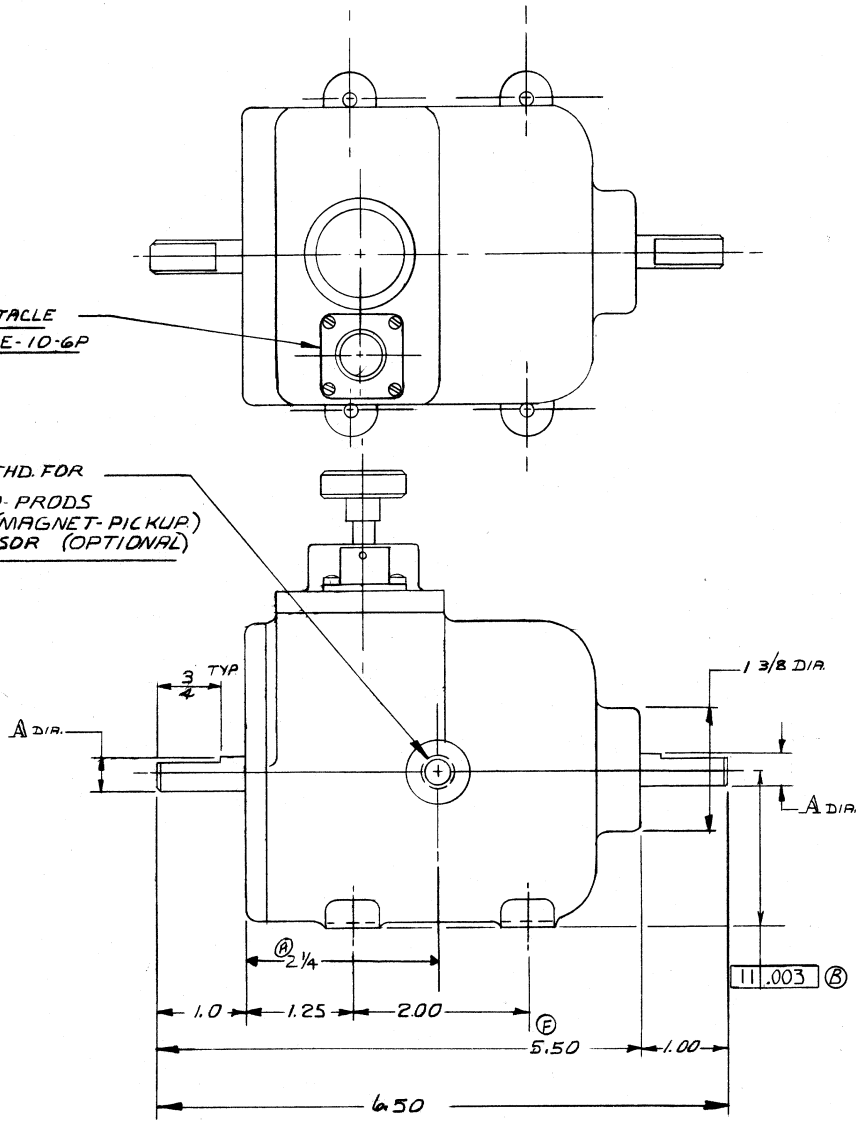
.250 DIA. SHAFT
OPTIONAL

SPECIFICATIONS S-1102 (D)

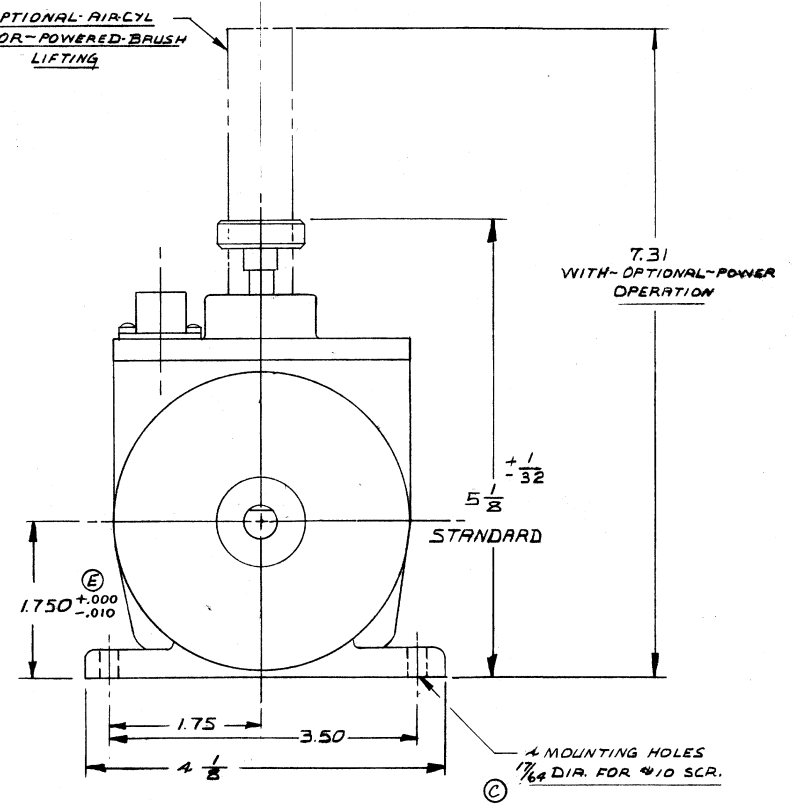
CAPACITY ~ SEE CHART.
OVERLOAD ~ MECH. OVERLOAD PROTECTION
SPEED ~ 20,000 RPM.
BRIDGE RESISTANCE ~ 350 OHMS
MAX. BRIDGE VOLTAGE - 20 VOLTS.
OUTPUT ~ VOLTAGE ~ 2 MV/VOLTS. NOMINAL.

RECEPTACLE
PT02E-10-6P

$\frac{3}{8}$ - 24 NF THD. FOR
ELECTRO. PRODS
A-17934 (MAGNET PICKUP)
SPEED-SENDR (OPTIONAL)



OPTIONAL AIR CYL
FOR POWERED BRUSH
LIFTING



| DET. No | PART No | DESCRIPTION | REQ'D |
|---------|------------|--------------------------|-------|
| F | | DIM. WAS 4.50 ECN 204110 | |
| E | | ADDED TOLERANCE DEN 5131 | |
| D | | ADDED PERF. SPEC. | |
| C | | WAS .20 ECN 3328 | |
| B | ECN 2702 | GH 5476 | |
| A | ADDED DIM. | M.L. 8/24/77 | |
| Z | REDRAWN | H.S.S. 1/14/77 | |
| SYM. | REVISION | DATE | |

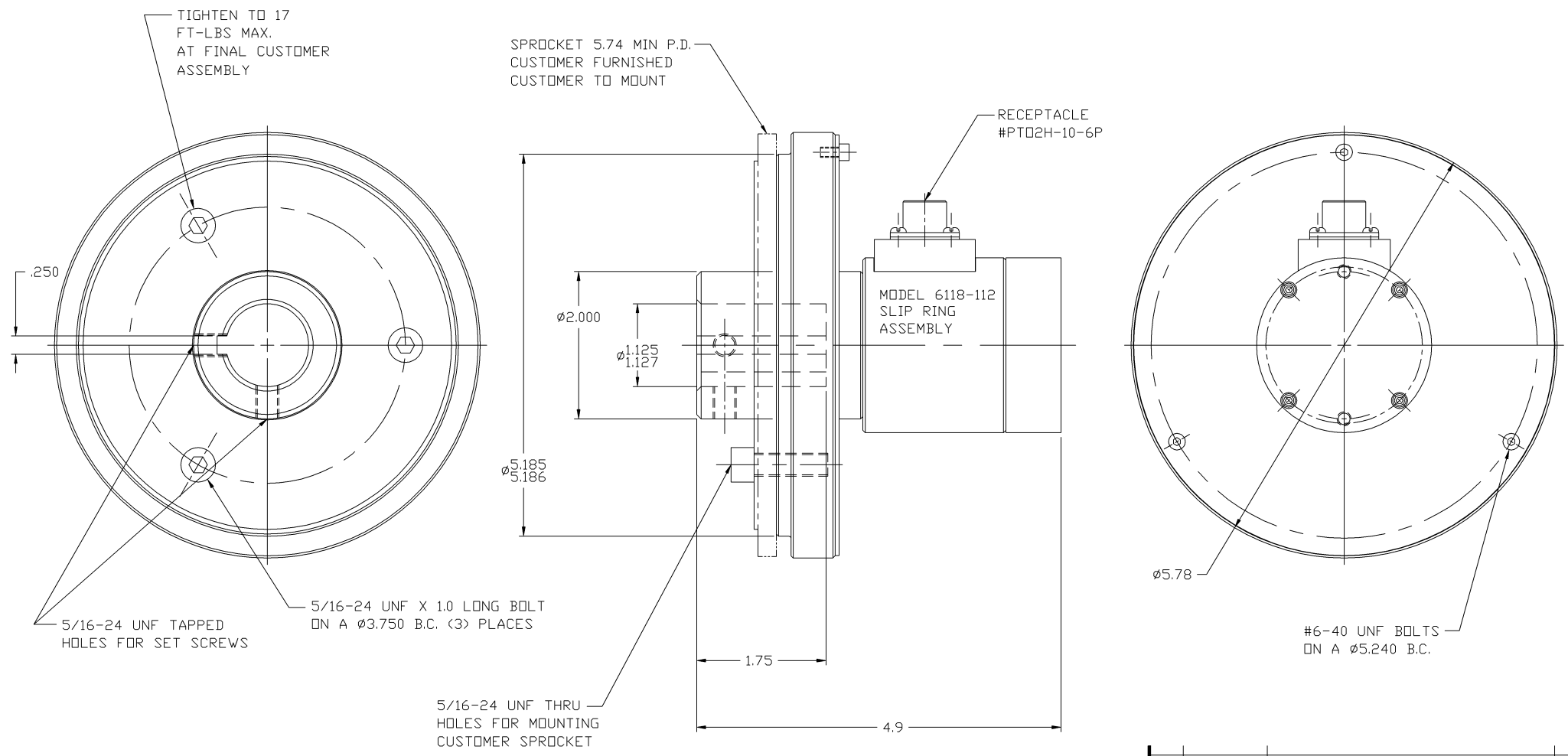
| SCALE: | DRAWN BY: | CHK'D BY: | DATE: | MODEL: | JOB NO.: |
|--------|-----------|-----------|--------|--------|----------|
| FULL | D. HAYMAN | | A-2-60 | 1102 | |

| UNLESS OTHERWISE SPECIFIED: | |
|-------------------------------|-------------------------------------|
| TOLERANCE ON FRACTIONS ± 1/64 | TOLERANCE ON DRILLED HOLES ± .002 |
| TWO PLACE DECIMALS ± .010 | REMOVE ALL BURRS & SHARP EDGES |
| THREE PLACE DECIMALS ± .005 | DIMENSION LIMITS HELD AFTER PLATING |
| ANGLES ± 0°30' | SURFACE FINISH 125/7 |

LEBOW ASSOCIATES, INC.
TROY, MICHIGAN

DRAWING NO. **C-1102-D**

R.S.P.M.

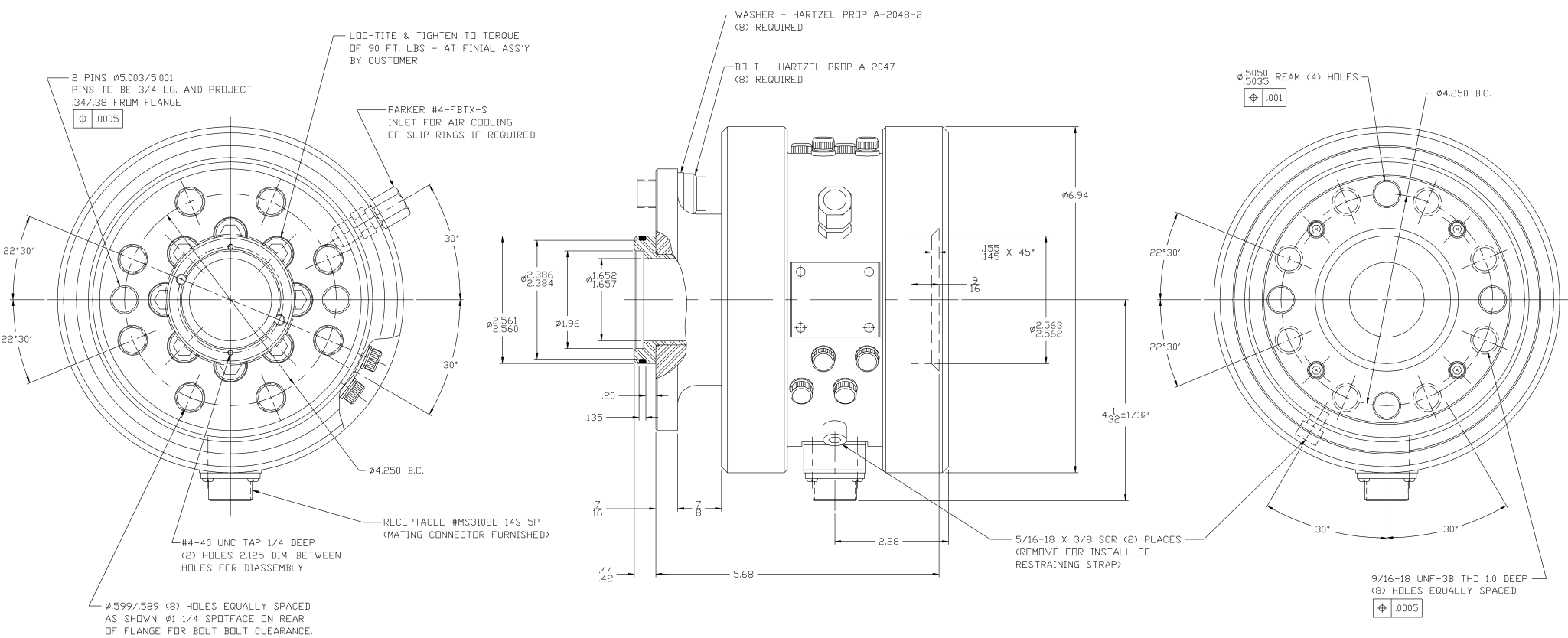


"NOTICE TO PERSONS RECEIVING THIS DRAWING AND/OR TECHNICAL INFORMATION"
 Lebow Products claims proprietary rights to the material disclosed herein. This drawing and/or technical information is issued in confidence for engineering information only and may not be reproduced or used to manufacture anything shown or referred to herein without direct written permission from Lebow Products to the user. This drawing and/or technical information is the property of Lebow Products and is loaned for mutual assistance, to be returned when its purpose has been served.

| DET. NO. | PART NO. | DESCRIPTION | REV'D. |
|---|------------------------------|--|--------------------|
| | | Lebow Products Lebow Products Troy, Michigan | |
| UNLESS OTHERWISE SPECIFIED LINEAR DIMENSIONS ARE IN INCHES REMOVE ALL BURRS & ANGULAR DIMENSIONS ARE IN DEGREES SHARP EDGES DIMENSION LIMITS HELD AFTER PLATING SURFACE FINISH 125 ✓ | | | |
| TOLERANCES | | | |
| DRILLED HOLES - .000 + .007 | TWO PLACE DECIMALS ± .005 | THREE PLACE DECIMALS ± .002 | ANGLES ± 0° 30' |
| SCALE: NONE | REF. DWG. C-30029 | FRACTIONAL DIMENSIONS 1/164 | MATL. - |
| TITLE: SPROCKET SENSOR O.D. | | DR. BY: CW | ENGR. GPH |
| ECN NO. | | CHK'D. BY: GPH | ENGR. GPH |
| SYM. | | DATE: 9/7/82 | DATE: 9/22/82 |
| G F | | DATE: 9/22/82 | DATE: 9/22/82 |
| G F | | MODEL: 1388 | REV. - |
| G F | | DRAWING NO. C-30028 | REV. - |

| | |
|-----------|------------------|
| REVISIONS | DESCRIPTION |
| 1 | ISSUE |
| 2 | REPAIRMAN ON CAD |
| 3 | WAS R-30346 |
| 4 | DATE |
| 5 | APPV'D. |
| 6 | CHK'D. |
| 7 | ECN NO. |
| 8 | SYM. |

"NOTICE TO PERSONS RECEIVING THIS DRAWING AND/OR TECHNICAL INFORMATION"
 Lebow Products Corp. proprietary rights to the technical details herein, the drawing and/or technical information, shall be confidence for engineering information only and may not be reproduced or used for manufacture, copying, printing or otherwise without direct written permission from Lebow Products to the user. The drawing and/or technical information is the property of Lebow Products and is loaned for mutual assistance to be returned when its purpose has been served.

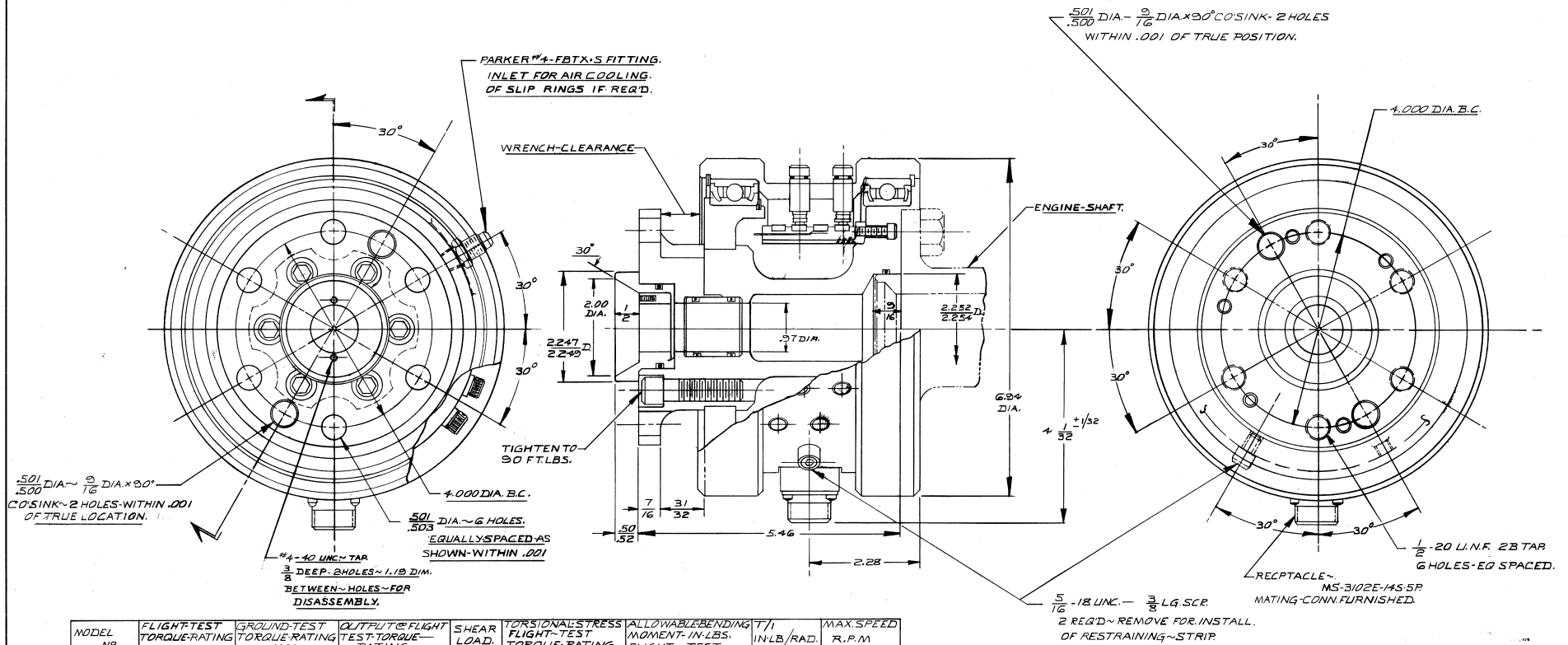


NOTES:
 1.) GROUND TEST ONLY
 2.) GROUND RATED

SPECIFICATIONS:
 OUTPUT: 15 MV.V NOM.
 SPEED: 3500 R.P.M. MAX.

Ⓟ

| | | | |
|---|--------------------|----------------------------------|------------------------|
| REV. NO. | PART NO. | DESCRIPTION | REV. |
| VSR A-27473 | | Lebow Products Troy, Michigan | |
| UNLESS OTHERWISE SPECIFIED LINEAR DIMENSIONS ARE IN INCHES REMOVE ALL BURRS & ANGULAR DIMENSIONS ARE IN DEGREES SHARP EDGES DIMENSION LIMITS HELD AFTER PLATING SURFACE FINISH 125 ✓ | | | |
| TOLERANCES | | | |
| DRILL HOLES | TWO PLACE DECIMALS | THREE PLACE DECIMALS | ANGLES |
| ±.001 | ±.0005 | ±.0002 | +0.30° |
| DATE | APP'D. | CHK'D. | ECN NO. |
| 3/15/79 | | | |
| TITLE: INSTALLATION-TURBO-PROP TORQUE PICK-UP | | | DRAWING NO. D-27473 |



| MODEL NO | FLIGHT TEST TORQUE-RATING IN LBS. | GROUND TEST TORQUE-RATING IN LBS. | OUTPUT @ FLIGHT TEST TORQUE - RATING | SHEAR LOAD. | TORSIONAL STRESS FLIGHT TEST TORQUE-RATING | ALLOWABLE BENDING MOMENT - IN LBS. FLIGHT TEST. | T/I IN LB/RAD. | MAX. SPEED R.P.M. |
|----------|-----------------------------------|-----------------------------------|--------------------------------------|-------------|--|---|------------------------|-------------------|
| 1308-10K | 10,000 | 15,000 | 1.0 MV/V | 3,000 | 12,000 | 11,500 | 3.54 x 10 ⁶ | 3500 |
| 1308-13K | 13,000 | 20,000 | 1.0 MV/V | 4,000 | 16,000 | 14,500 | 4.10 x 10 ⁶ | 3500 |
| 1308-16K | 16,000 | 24,000 | 1.0 MV/V | 4,500 | 17,000 | 16,000 | 4.33 x 10 ⁶ | 3500 |
| 1308-20K | 20,000 | 30,000 | 1.0 MV/V | 5,000 | 18,000 | 18,000 | 4.74 x 10 ⁶ | 3500 |

© FLIGHT TESTED

| | | | |
|--|---------------------|-------------|---------|
| DEV. NO. | PART NO. | DESCRIPTION | REQ'D |
| OUTSIDE DIMENSIONS OF PROP. SHAFT - TORQUE - PICK UP | | | |
| RECALL TO BUREAU OF AERONAUTICS | | | |
| DATE | CHK'D BY | WORK NO. | JOB NO. |
| 9/25/50 | | 308 | |
| L | ADD'D FLIGHT TESTED | 6.74 | |
| K | ECN 2802 | 7.74 | |
| J | REDRAWN HAS | 7.15 | |
| SYL | REVISION | DATE | |

UNLESS OTHERWISE SPECIFIED:
 TOLERANCE ON FRACTIONS ± .001
 TOLERANCE ON DRILLED HOLES ± .001
 REMOVE ALL BURR & SHARP EDGES
 THREE PLACE DECIMALS
 DIMENSION LINES HELD AFTER FLATTING
 SURFACE FINISH 125/

LEBOW ASSOCIATES, INC.
 TROY, MICHIGAN

D-1308-D