

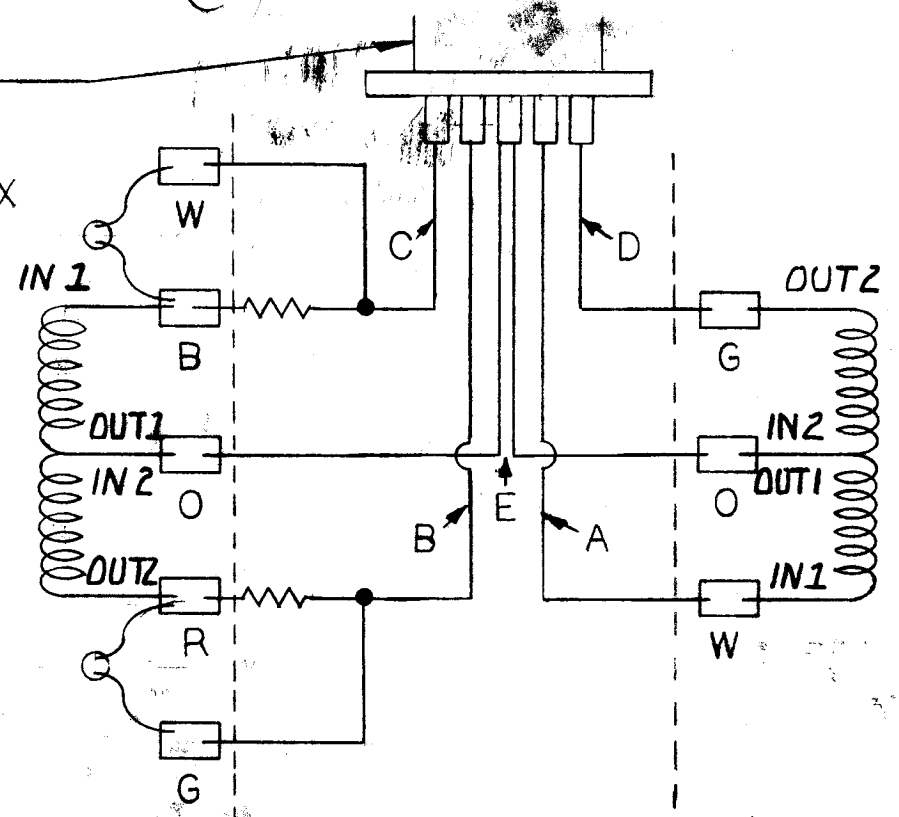
R-150

RECEPTACLE
MS-3102E-14S-5P

MATING CABLE IS 7200-81-XXX

SCANNED
APR 29 1996

(B) RESISTORS ARE BONDED ON P.C. BOARD (A) WHICH WILL BE SOLDERED TO RECEPTACLE PINS



"NOTICE TO PERSONS RECEIVING THIS DRAWING AND/OR TECHNICAL INFORMATION:"

Eaton Corporation claims necessary rights to the material disclosed herein. This drawing and/or technical information is issued in confidence for engineering information only and may not be reproduced or used to manufacture anything shown or referred to herein without direct written permission from Eaton Corporation to the user. This drawing and/or technical information is the property of Eaton Corporation and is loaned for mutual assistance, to be returned when its purpose has been served.

EXC. STATOR | RECEPTACLE | SIG. STATOR

DET. NO.	PART NO.	DESCRIPTION	REQ'D.
		EATON Lebow Products	Eaton Corporation Electronic Instrumentation Division Troy, Michigan
UNLESS OTHERWISE SPECIFIED			
LINEAR DIMENSIONS ARE IN INCHES		REMOVE ALL BURRS & SHARP EDGES	
ANGULAR DIMENSIONS ARE IN DEGREES		DIMENSION LIMITS HELD AFTER PLATING	
		SURFACE FINISH 125 ✓	
TOLERANCES			DR. BY: <i>CPH</i> BY: <i>ENGR. CPM</i>
DRILLED HOLES	TWO PLACE DECIMALS ±.010	THREE PLACE DECIMALS ±.005	ANGLES ±0° 30'
SPEC. MG-101			DATE: <i>6/7/03</i> 83
SCALE: <i>1/16"</i>	REF. DWG: <i>D-25263</i>	JOB NO.: <i>R12-0011</i>	MAT'L: <i>1800</i>
TITLE: CIRCUIT SCHEMATIC			DRAWING NO.: R-150
			REV. (A)

DESCRIPTION	DATE	APPV'D.	CHG'D.	ECN NO.	SYM.
A-27045 WAS SPEC'D FOR R.C. BOARD, NO. 1800 IN TITLE BOX, R-110021. RESISTOR NOTE SPEC'D USE 2.56 OHM RESIST. MATING CABLE W/ 7260-57-XXX	<i>1/2/03</i>	<i>[Signature]</i>	<i>[Signature]</i>	<i>[Signature]</i>	<i>[Signature]</i>