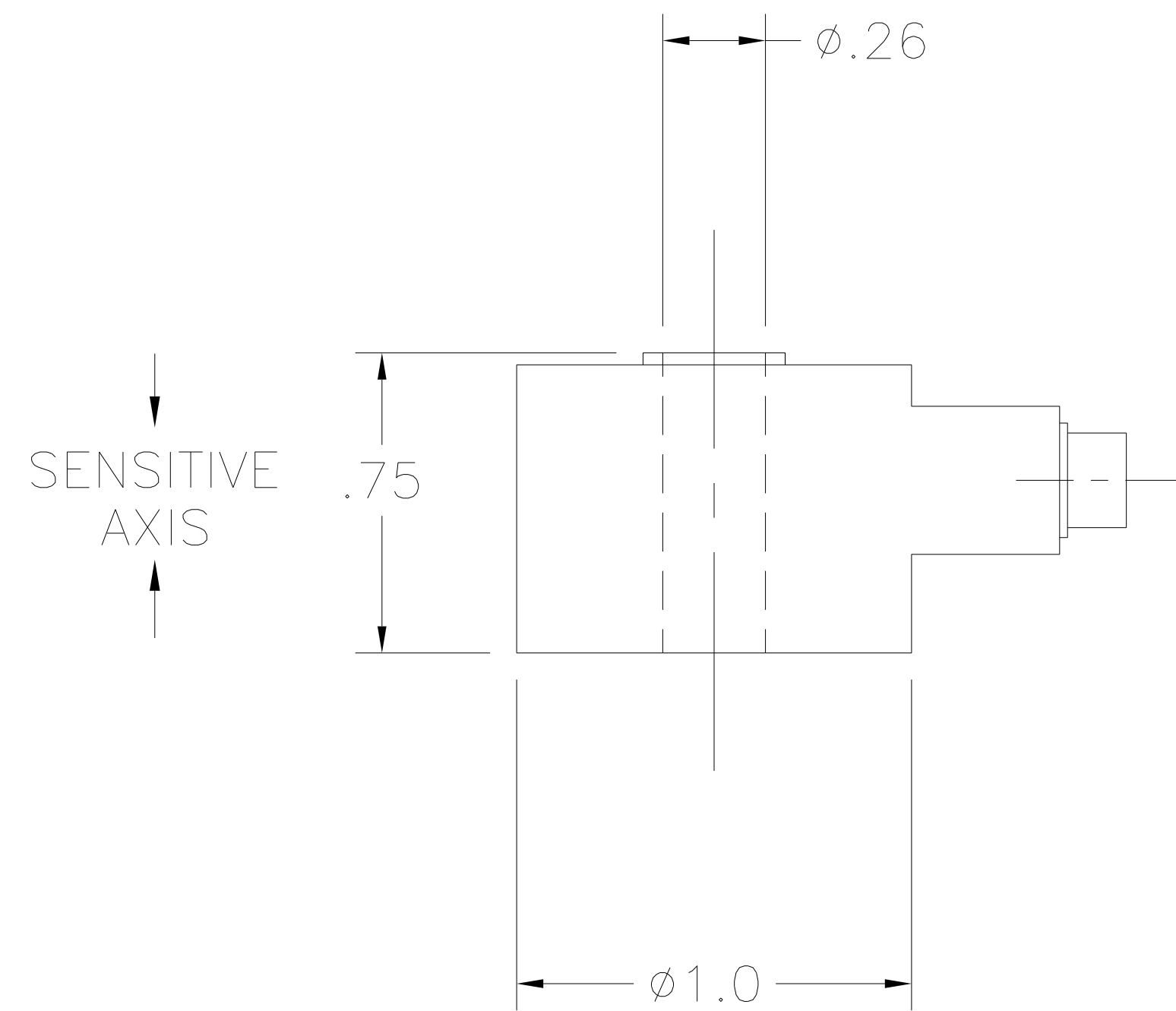


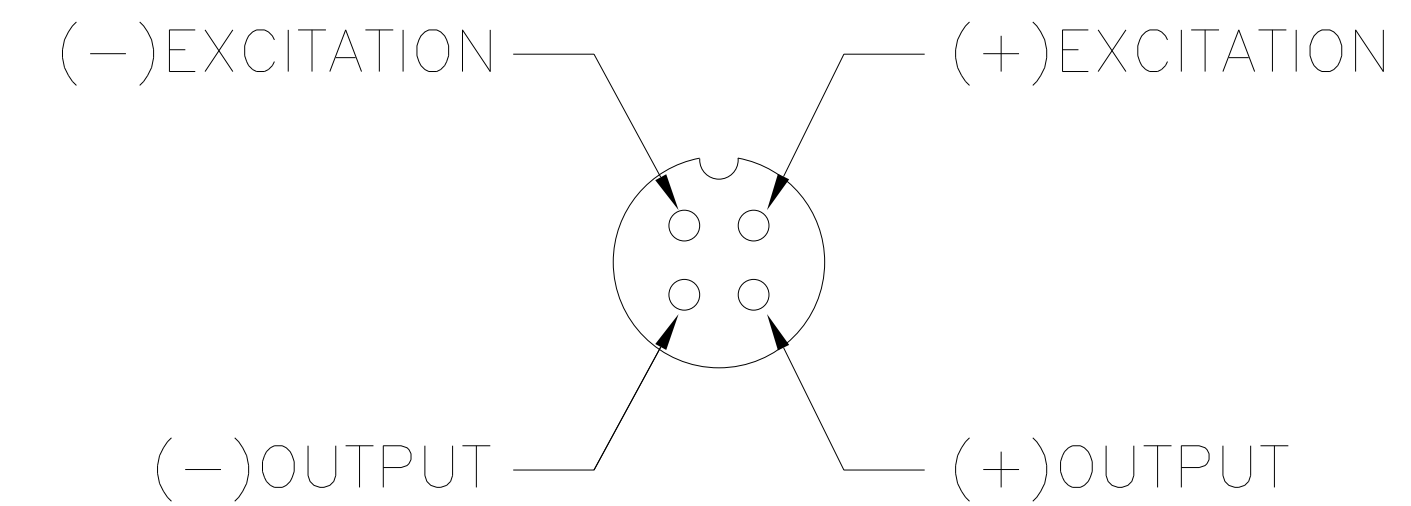
SPECIFICATIONS

Ranges (in Peak g):	+/-50 to 500
Excitation Voltage:	5 VDC NOM, 10 VDC MAX *
Non-linearity & Hysteresis:	+/-1% F.S.
Frequency Response (%):	+/-10%**
Transverse sensitivity:	3% max.
Resolution:	Infinite
Operating Temperature:	-40 to +250 deg F
Compensated Temperature:	70 to 200 deg F
Temperature Effect on:	
- Zero (max):	±2% F.S.
- Sensitivity (max):	±10% F.S.
Strain Gage Type:	Silicon piezoresistive
Bridge Resistance:	4.0k ohms, nominal
Insulation Resistance:	5000 Mohms
Safe Overload:	20x F.S. or 2000g whichever is less.
Case Material:	316 SS



*Output voltage is proportional to input voltage.
 **Within usable frequency range (see table)

WIRING CODE



-	INITIAL RELEASE TO PRODUCTION	-	-	-
REV	DESCRIPTION	REVISED BY	APPROVED BY	
DRW: RWM	CHK: RAF	MFG:	ENG: NCG	11-2-00
5/12/2000	11/02/00			

SCALE: NONE	SENSOTEC INC. 2080 ARLINGATE LANE, COLUMBUS, OHIO 43228 © SENSOTEC, INC. ALL RIGHTS RESERVED
.X ±.1	
.XX ±.01	
.XXX ±.005	BOLT MOUNT ACCELEROMETER ± 50g THRU ±500g
±1/2"	DOCUMENT NUMBER 000-F842-00

-04	±500G	.1 mV/g	0.06/0.15 mV/g	0-2000	5000 Hz
-03	±200G	.2 mV/g	0.15/0.3 mV/g	0-2000	4000 Hz
-02	±100G	.5 mV/g	0.3/0.6 mV/g	0-800	3000 Hz
060-F842-01	±50G	1 mV/g	0.6/1.5 mV/g	0-600	2000 Hz
PART NUMBER	RANGE	SENSITIVITY (NOMINAL)	SENSITIVITY (MIN/MAX)	USABLE FREQUENCY RANGE (Hz)	MOUNTED RESONANT FREQUENCY (Hz)

REV	ECN	USED ON