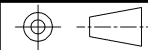
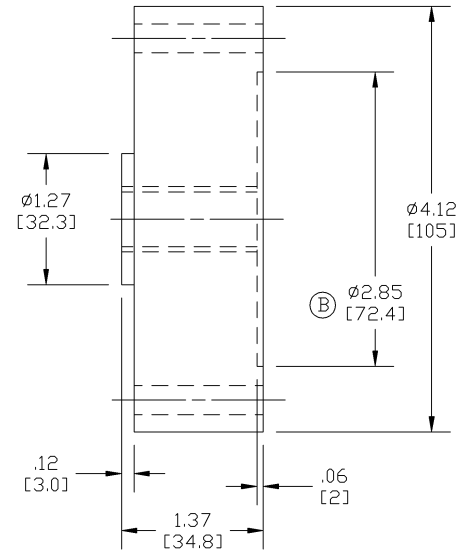
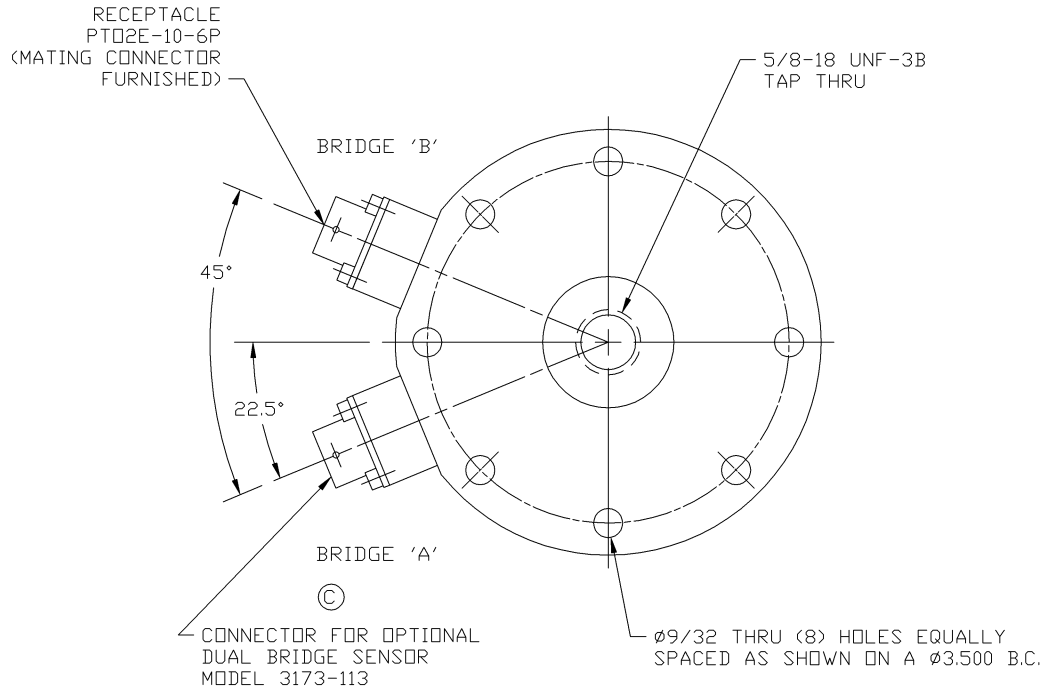


"NOTICE TO PERSONS RECEIVING THIS DRAWING AND/OR TECHNICAL INFORMATION"
 Lebow Products claims proprietary rights to the material disclosed hereon. This drawing and/or technical information is issued in confidence for engineering information only and may not be reproduced or used to manufacture anything shown or referred to hereon without direct written permission from Lebow Products to the user. This drawing and/or technical information is the property of Lebow Products and is loaned for mutual assistance, to be returned when its purpose has been served.

DO NOT SCALE DRAWING	C-30860	REV.
ALL CHANGES TO DRAWING MUST BE DONE ON CAD	 THIRD ANGLE PROJECTION	



NOTES:

- 1.) DIMS. IN PARENTHESES ARE IN M.M.
 - 2.) INSTALLATION INSTRUCTION PER AP-102.
 - 3.) PERFORMANCE SPECIFICATIONS PER S-3173.
 - 4.) CAPACITY: ENGLISH 200, 500, 1K, 2K, 3K LBS.
 - 5.) 1/4-28 HEX HD. SCRS. X 1 1/2 IN. LONG GRADE 8 RECOMMENDED FOR INSTALLATION TORQUE SCREWS TO 200 IN. LBS.
- Ⓐ TORQUE SCREWS TO 100 IN. LBS. FOR MODEL 3173-149

DET. NO.	PART NO.	DESCRIPTION	REV'D.
		Lebow Products	Lebow Products Troy, Michigan
UNLESS OTHERWISE SPECIFIED			
LINEAR DIMENSIONS ARE IN INCHES		REMOVE ALL BURRS & SHARP EDGES	
ANGULAR DIMENSIONS ARE IN DEGREES		SURFACE FINISH 125	
DIMENSION LIMITS HELD AFTER PLATING			
TOLERANCES			
DR. BY:	CHK'D. BY:	ENGR.	
CMR			
DATE:	DATE:	DATE:	
8-6-85			
SCALE:	REF. DWG.	FRACTIONAL DIMENSIONS	MAT'L.
NONE	B-30225	± 1/64	NOTED
TITLE:		MODEL:	DRAWING NO.
LOW PROFILE LOAD CELL		3173-STD	C-30860
		REV.	

REV.	DATE	DESCRIPTION
1		PERF. SPEC. WAS A-30418
2		Ø2.850/2.853 WAS Ø2.850
3		ADDED PHANTOM RECEPTACLE
4		ADDED TORQUE SPEC. FOR 3173-149
5		REBORN ON CAD

REVISIONS