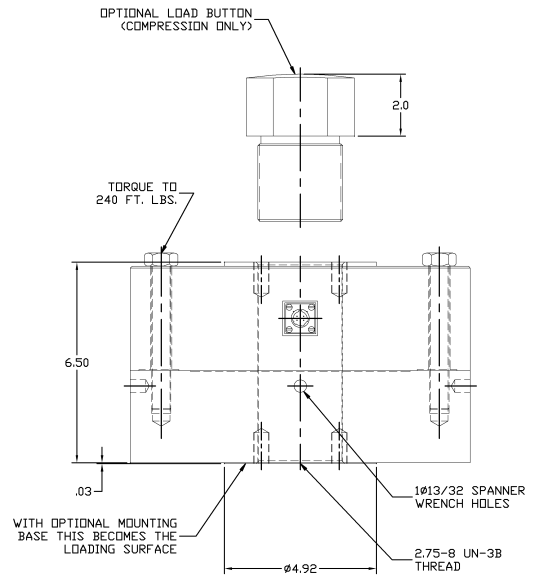
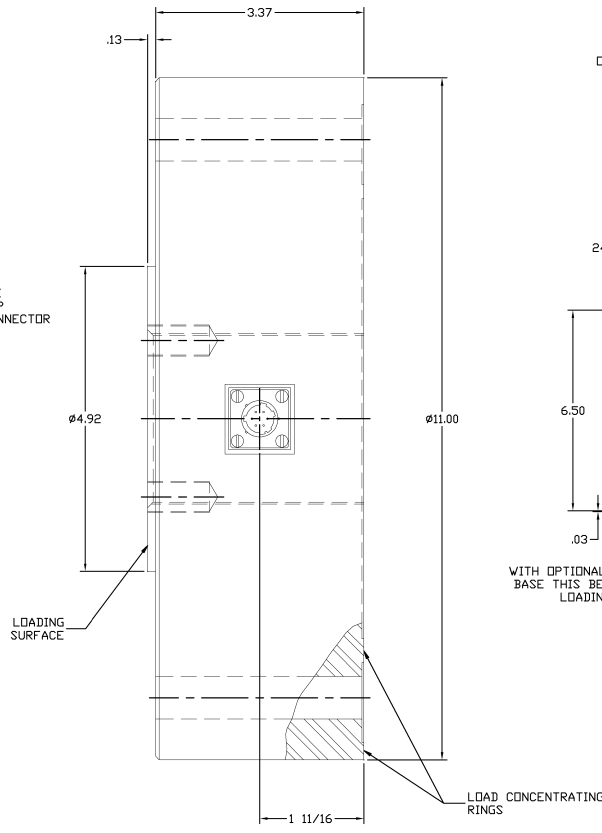
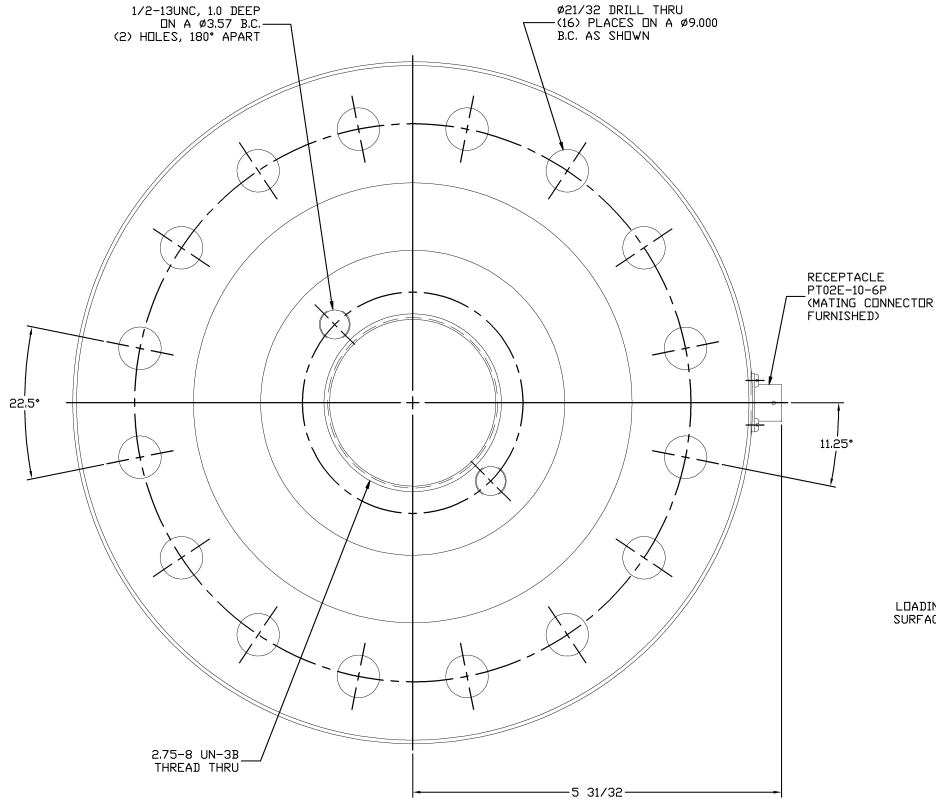


NOTICE TO PERSONS RECEIVING THIS DRAWING AND/OR TECHNICAL INFORMATION: Lebow Products claims proprietary rights in the material disclosed herein. The drawing and/or technical information is hereby confirmed for engineering information only and may not be reproduced or used in manufacture, marketing or otherwise in whole or in part without the written consent of Lebow Products. In the event the drawing and/or technical information is the property of Lebow Products, it is loaned for your assistance, to be returned when no purpose has been served.

DO NOT SCALE DRAWING	D-31501
ALL DIMENSIONS IN INCHES UNLESS OTHERWISE NOTED	THIRD ANGLE PROJECTION



1/2 SCALE

UNIT IS SHOWN WITH OPTIONAL LOAD BUTTON AND MOUNTING BASE. WHEN BASE IS ORDERED UNIT IS SHIPPED FACTORY ASSEMBLED WITH (16) 5/8-18 GRADE 8 HEX HEAD BOLTS.

FOR ADDITIONAL INFORMATION SEE
LEBOW SPECIFICATION SHEET S-3175

USE OF TENSION BASE IS RECOMMENDED
FOR ALL APPLICATIONS. WHEN MOUNTING
LOAD CELL WITHOUT TENSION BASE
ATTENTION MUST BE GIVEN TO THE MATING
SURFACE WITH REGARD TO FLATNESS, HARDNESS,
AND STIFFNESS

3177	200 LBS	200K LBS
3176	100K LBS	150K LBS
MODEL NO.	CAPACITY	OVERLOAD CAPACITY

REV. NO.	PART NO.	DESCRIPTION	REV.
Lebow Products		Lebow Products Troy, Michigan	
UNLESS OTHERWISE SPECIFIED LINEAR DIMENSIONS ARE IN INCHES REMOVE ALL BURRS & ANGULAR DIMENSIONS ARE IN DEGREES SHARP EDGES DIMENSION LIMITS: WELD AFTER PLATING SURFACE FINISH: L28 ✓			
TOLERANCES			
DRILLED HOLES	TWO PLACE DECIMALS	THREE PLACE DECIMALS	ANGLES
±.015	±.005	±.001	± 0.3°
DATE	REV. DATE	FRACTIONAL DECIMALS	WELD
12/16/87	D-31498	±.005	-----
APPROV. DATE	DATE	DATE	DATE
MJM	12/16/87	3176/3177	
CHK			
ENCL. NO.			
B.A. SYM.			
TITLE:		DRAWING NO.	REV.
O.D. LOAD CELL		D-31501	