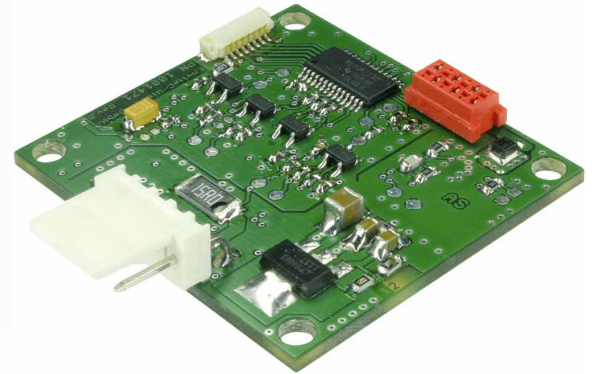


OEM Flow Module SpiroQuant MAX

Features:

- Constant temperature mode
- Real flow value
- RS-232 communication
- 10bit A/D converter
- Auto-zero function
- Wire cleaning of heat-wire flow sensor
- Development kit with evaluation software (Windows 7/8/10)
- High product quality
- Technical support



„We keep your devices operating at their best.“

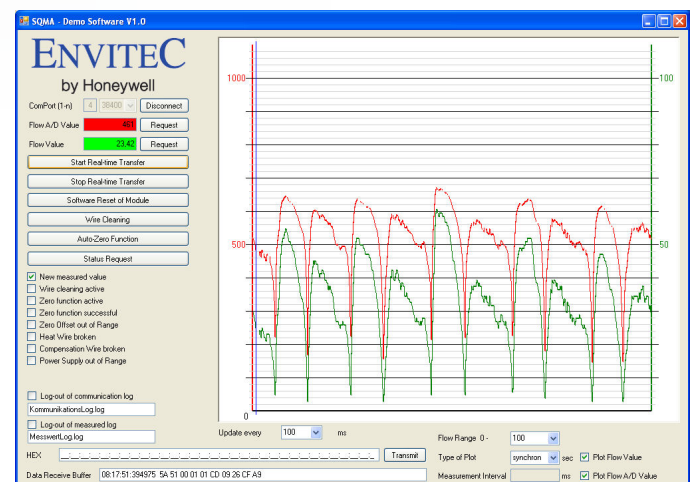
EnviteC has been developing and manufacturing highly specialized products for medical applications. EnviteC’s research and development activities are consistently aligned to customer and market needs – identification and optimization of sustainable product solutions are the main concerns of the company.

The company trusts in the quality of advanced production methods and processes. The result are flow measurement solutions for medical applications, which share the same extraordinary quality, excellent signal stability and reliable response for accurate readings. The OEM flow module SpiroQuant MAX is designed for flow measurement using a hot-wire flow sensor SpiroQuant A+.

From standard sensors to customized sensors

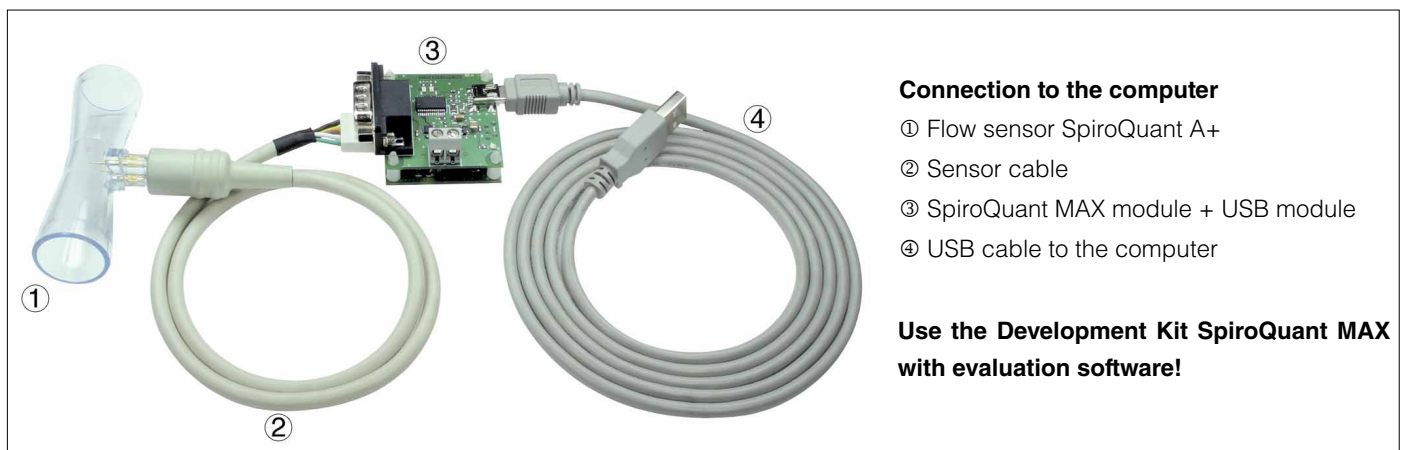
Experienced EnviteC engineers analyze customer requirements. This input is used for different standard and OEM applications, and ongoing support is provided right up to the final integration in the solution. EnviteC designs customized sensors characterized by a maximum possible degree of precision.

Demo Software



For more information please contact us!

We look forward to assisting you either on the phone or in a personal talk.



Connection to the computer

- ① Flow sensor SpiroQuant A+
- ② Sensor cable
- ③ SpiroQuant MAX module + USB module
- ④ USB cable to the computer

Use the Development Kit SpiroQuant MAX with evaluation software!

Technical Specifications SpiroQuant MAX

Measuring principle	Constant temperature mode
Cross reference	SpiroQuant MAX is designed to work with EnviteC's hot-wire flow sensor SpiroQuant A+.
Measurement range	0 ... 160 slpm (standard liter per minute)
Accuracy	± 7% from measured value between 0 ... 10 l/min with flow sensor SpiroQuant A+; ± 5% from measured value between 10 ... 160 l/min with flow sensor SpiroQuant A+
Supply voltage	5 V DC ± 4 % (for 5 V version min. 4.8 V is required)
Current consumption	70 ... 250 mA (depending on gas flow)
Interface	RS-232 with level converter (EIA/TIA-232 compatible)
Data rate	38400 Baud, Data bit 8, Stop bit 1, Parity none, Handshake none
External wire cleaning	TTL compatible H level (approx. 250 ms pulse length)
Digital I/O (optional)	TTL compatible signal, user specific level
AD conversion	Resolution: 10 bit
Conversion time	Approx. 5 ms
Maximal data rate	200 samples per second
Dimensions	38 x 41 mm (L x W)
Height	Max. 12 mm
Weight	Approx. 10 g
Attachment holes	4 x Ø 3.2 mm
Connection	Board supply & communication: MicroMatch 6-pole; Flow sensor: Molex 5-pole
Part number	1001487: OEM-Module SpiroQuant MAX; 1001475: Cable flow sensor; 1000470: Box flow sensors SpiroQuant A+; 1001488: Development Kit SpiroQuant MAX (incl. module, sensor cable, flow sensor, USB interface, USB cable and evaluation software)

All specifications are applicable at standard conditions:
1013 hPa, 25 °C dry ambient air



Certified Quality Management

EnviteC is maintaining a quality management system, which meets the requirements of EN ISO 13485 for medical devices.

EnviteC-Wismar GmbH a Honeywell Company

Alter Holzhafen 18, 23966 Wismar, Germany

Phone: +49 (0)3841-360-1

Phone: +49 (0)3841-360-200

Fax: +49 (0)3841-360-222

Internet: www.envitec.com

Email: info@envitec.com

Doc. No. 064-05-SpiroQuant_MAX_Spec-0

December 2017

Technical information is subject
to change without notice!

© 2017 Honeywell International Inc.

EnviteC by Honeywell reserves the
right to make changes in product
specifications and adjust its production
at any time and without notice.

ENVITEC
by Honeywell