

HF561Fixed Wide-angle 2D Image Scanner

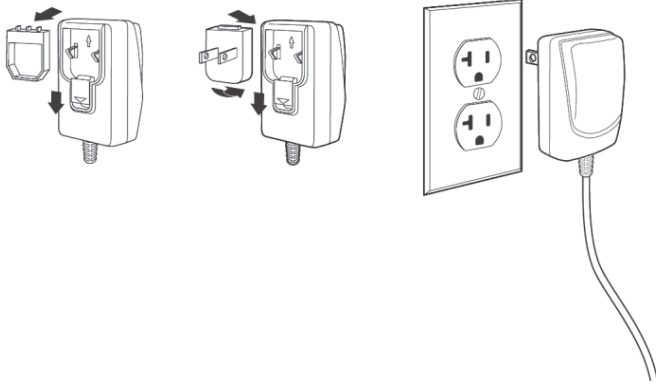
Quick Start Guide



Quick Start Guide

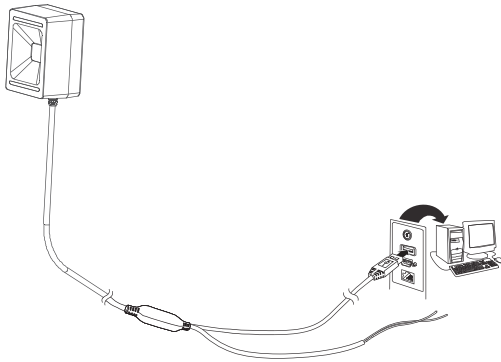
Please power off the computer before connecting the scanner, and then power on the computer after the scanner is fully connected.

Power Adapter (if included)

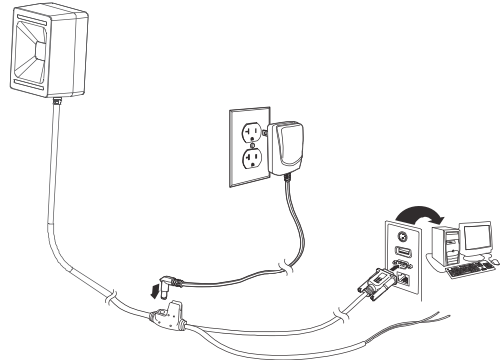


Note: Please refer to the user guide for the information on the cleaning equipment.

USB Connection



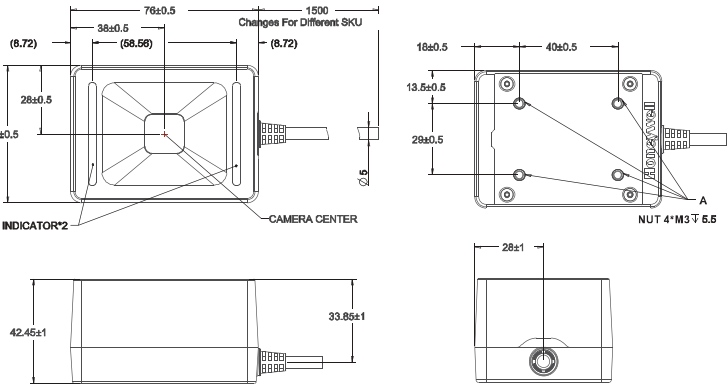
RS232 Connection



Notes: The separated blue and yellow wires can connect to an external beeper or LED indicator if needed. Please find the detailed information in the User Guide.

Mounting Information

M3 screws shall be used and the maximum length is 5.5mm/0.22in. Maximum torque is 4.5kg/lbf and the maximum drawing force is 750N.



Reading Skills

- To acquire a good reading effect, the scanner center shall be aligned to the barcode, but the alignment can be made at any direction to facilitate reading.
- When the scanner aligns to the barcode, the scanner shall be close to the barcode if the barcode is too small; if the barcode is large, the scanner shall be slightly away from the barcode, so that the scanner can more easily read the barcode.
- If the reflectance on the surface of barcode is high (e.g., film coating), you may need to incline the scanner at an angle, so that the scanner can more easily read the barcode.

Factory Default Recovery

Scan the barcode below to fully recover the scanner to the factory default state.



Factory Default

USB Version Interface Setting

USB version supports USB HID and USB virtual serial port. The user may scan the following barcode to switch.

(1) USB keyboard interface



(2) USB keyboard interface



Indicator Setting

(1) Indicator ON



(2) Indicator OFF



Enter/ Tab Setting

(1) Add Enter



(2) Add Tab



(3) Cancel Enter/ Tab



Technical Support

For contact information on technical support, after-sales service and maintenance, please visit <https://sensing.honeywell.com/contact-support-form>

User Documentation

For a localized version of this document and to download the “User Guide”, please visit <https://sensing.honeywell.com/>

Valid Warranty

For warranty information, please visit www.honeywellaidc.com, and click **Resources > Warranty**

Patent

For patent information, please visit www.hsmpats.com

Declaration

- Honeywell reserves the rights to revise the specifications and other information in this document without prior notice. Regardless of whether there are any revisions, the reader is advised to refer to the final explanation by Honeywell. The information in this document does not represent Honeywell’s pledge.
- Honeywell is not accountable for any technical or editorial mistakes or omissions in this document, and is not responsible for accidents or indirect harm caused by equipment, demonstration or use of this material. Honeywell disclaims all liability for the results of the choice and/ or use of this hardware/ software for specific purposes.
- Proprietary information contained in this document is protected by copyright, all rights reserved. Without prior written consent from Honeywell, no part of this document can be copied or reproduced in any form, or translated to other languages.



Names and Content of Hazardous Substances in the Product

Parts Name	Hazardous Substances					
	Pb	Hg	Cd	Cr6+	PBB	PBDE
2DImager	o	o	o	o	o	o
PCB	o	o	o	o	o	o
Housing	x	o	o	o	o	o
Cables	o	o	o	o	o	o

The table is created by **SJ/T11364** requirement.

o: Indicates that this hazardous substance contained in all of the homogeneous materials for this part is below the limit requirement in China's GB/T26572.

x: Indicates that this hazardous substance contained in at least one of the homogeneous materials for this part is above the limit requirement in China's GB/T26572.