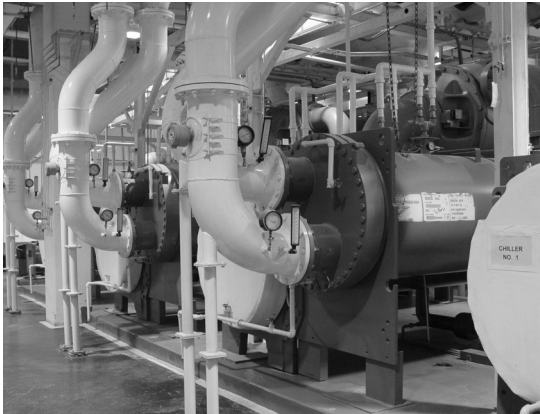


Monitoring Inlet and Outlet Compressor Pressures on a Chiller

Application Note



BACKGROUND:

Chillers are used to provide cooling for chemical, food and pharmaceutical manufacturing processes, cold storage rooms, air conditioning for large buildings and mobile refrigeration for trucks, trains, and marine vehicles.

PROBLEM:

To accurately monitor the refrigerant pressures at various locations and stages of the compression equipment.

SOLUTION:

Pressure measurements of the refrigerant are typically made at the compressor inlet (low-pressure gas) and the outlet (high-pressure gas), and at other locations throughout the system. Measurements may also be made on the lubricating oil for the compressor or media being cooled (gas or liquid). The pressures involved generally range from approximately 100 psi to 500 psi. The MLH Series has all wetted materials that are equivalent to or better than 300 series stainless steel with a wide choice of pressures, ports and connectors which makes the MLH an ideal choice for these types of applications.

⚠ WARNING

PERSONAL INJURY

DO NOT USE these products as safety or emergency stop devices or in any other application where failure of the product could result in personal injury.

Failure to comply with these instructions could result in death or serious injury.

Monitoring Inlet and Outlet Compressor Pressures on a Chiller

Application Note

ENVIRONMENT:

Chillers are found in a variety of environments some of which contain oil and dust, and can be subject to relatively large changes in ambient temperature and humidity. The MLH Series sensors are protected from adverse environmental conditions by a housing designed to meet IP65 standards.

SUMMARY:

The rugged and highly dependable Honeywell MLH Series pressure sensors are a perfect choice for this type of application. The thru-wall mounting capability, broad range of pressures, along with a variety of pressure ports and connector styles to choose from make this a very versatile product that can be readily adapted to a variety of applications.

WARRANTY/REMEDY

Honeywell warrants goods of its manufacture as being free of defective materials and faulty workmanship. Contact your local sales office for warranty information. If warranted goods are returned to Honeywell during the period of coverage, Honeywell will repair or replace without charge those items it finds defective. **The foregoing is Buyer's sole remedy and is in lieu of all other warranties, expressed or implied, including those of merchantability and fitness for a particular purpose.**

Specifications may change without notice. The information we supply is believed to be accurate and reliable as of this printing. However, we assume no responsibility for its use.

While we provide application assistance personally, through our literature and the Honeywell web site, it is up to the customer to determine the suitability of the product in the application.

For application assistance, current specifications, or name of the nearest Authorized Distributor, contact a nearby sales office. Or call:

1-800-537-6945 USA/Canada

1-815-235-6847 International

FAX

1-815-235-6545 USA

INTERNET

www.honeywell.com/sensing

info.sc@honeywell.com

Honeywell

Sensing and Control

www.honeywell.com/sensing

Honeywell

11 West Spring Street

Freeport, Illinois 61032