

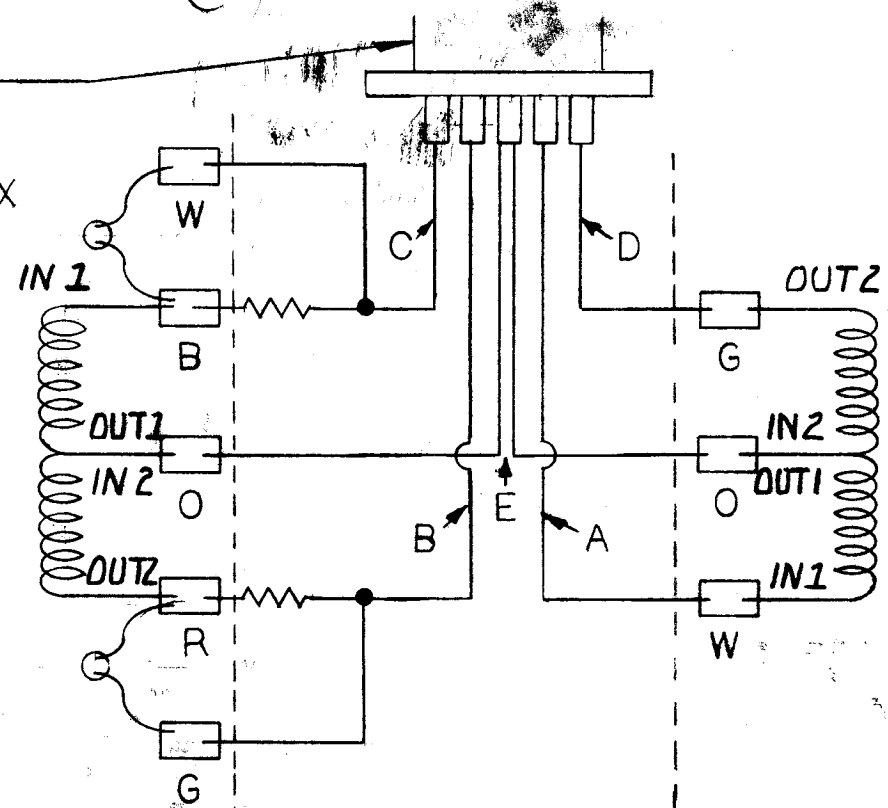
R-150

RECEPTACLE
MS-3102E-14S-5P

MATING CABLE IS 7200-81-XXX

SCANNED
 APR 29 1996

(B) RESISTORS ARE
 BONDED ON P.C. BOARD **(A)**
 WHICH WILL BE SOLDERED
 TO RECEPTACLE PINS



"NOTICE TO PERSONS RECEIVING THIS
DRAWING AND/OR TECHNICAL INFORMATION:"

Eaton Corporation claims proprietary rights to the material disclosed
 herein. This drawing and/or technical information is issued in
 confidence for engineering information only and may not be repro-
 duced or used to manufacture anything shown or referred to herein
 without direct written permission from Eaton Corporation to the
 user. This drawing and/or technical information is the property of
 Eaton Corporation and is loaned for mutual assistance, to be returned
 when its purpose has been served.

EXC. STATOR | RECEPTACLE | SIG. STATOR

DET. NO.	PART NO.	DESCRIPTION	REQ'D.
		EATON Lebow Products Eaton Corporation Electronic Instrumentation Division Troy, Michigan	
UNLESS OTHERWISE SPECIFIED LINEAR DIMENSIONS ARE IN INCHES ANGULAR DIMENSIONS ARE IN DEGREES DIMENSION LIMITS HELD AFTER PLATING REMOVE ALL BURRS & SHARP EDGES SURFACE FINISH 125 ✓			
TOLERANCES			DR. BY: <i>CPH</i> ENGR. BY: <i>CPH</i>
DRILLED HOLES SPEC. MG-101	TWO PLACE DECIMALS ±.010	THREE PLACE DECIMALS ±.005	ANGLES ±0° 30'
SCALE: <i>1/16"</i>	REF. DWG D-25263	JOB NO. R12-0011	MAT'L: <i>1/16"</i>
TITLE CIRCUIT SCHEMATIC			MODEL: 1800, 1641-P02 DRAWING NO. R-150 REV.

DESCRIPTION	DATE	APPV'D.	CHG'D.	ECN NO.	SYM.
A-27045 WAS SPEC'D FOR R.C. BOARD MODE # "1800" IN TITLE BOX, R-110021 RESISTOR NOTE SPEC'D "USE 2.56 OHM RESIST." MATING CABLE W/MS 7260-57-XXX	<i>6/7/83</i>	<i>[Signature]</i>	<i>[Signature]</i>	<i>[Signature]</i>	<i>CPH/A</i>