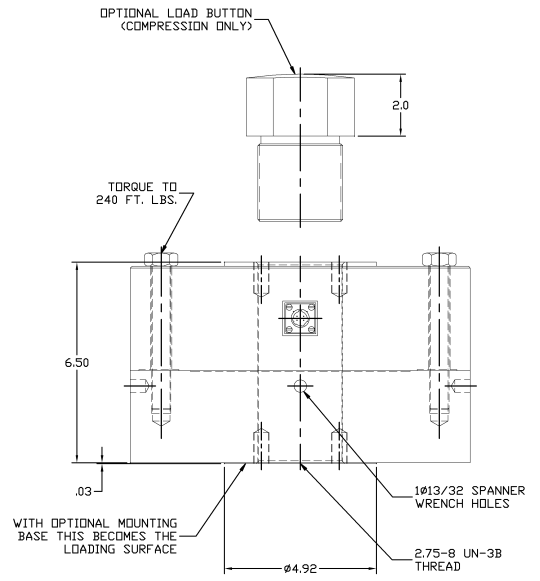
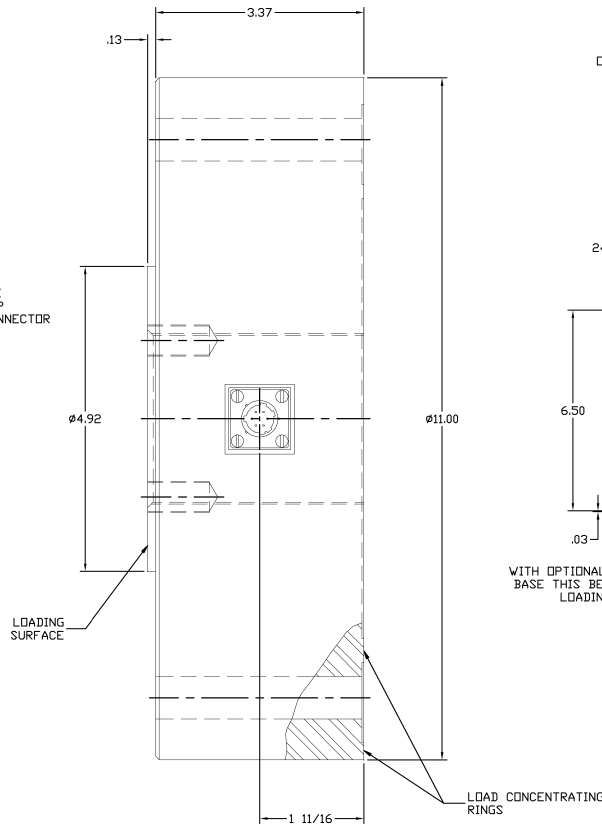
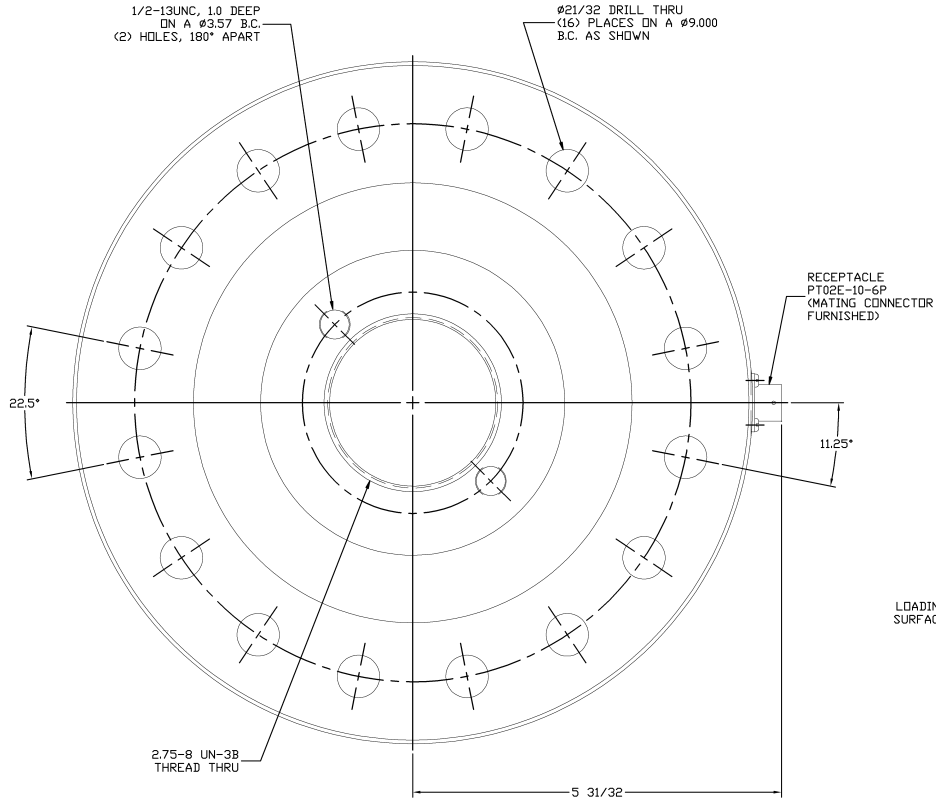


NOTICE TO PERSONS RECEIVING THIS DRAWING AND/OR TECHNICAL INFORMATION: Lebow Products claims proprietary rights in the material disclosed herein. The drawing and/or technical information is hereby confirmed for engineering information only and may not be reproduced or used in manufacture, marketing or otherwise in whole or in part without the written consent of Lebow Products. In the event the drawing and/or technical information is the property of Lebow Products, it is loaned for your assistance, to be returned when no purpose has been served.

DO NOT SCALE DRAWING	D-31501
ALL DIMENSIONS IN INCHES UNLESS OTHERWISE SPECIFIED	THIRD ANGLE PROJECTION



1/2 SCALE

UNIT IS SHOWN WITH OPTIONAL LOAD BUTTON AND MOUNTING BASE. WHEN BASE IS ORDERED UNIT IS SHIPPED FACTORY ASSEMBLED WITH (16) 5/8-18 GRADE 8 HEX HEAD BOLTS.

FOR ADDITIONAL INFORMATION SEE LEBOW SPECIFICATION SHEET S-3175

USE OF TENSION BASE IS RECOMMENDED FOR ALL APPLICATIONS. WHEN MOUNTING LOAD CELL WITHOUT TENSION BASE ATTENTION MUST BE GIVEN TO THE MATING SURFACE WITH REGARD TO FLATNESS, HARDNESS, AND STIFFNESS

3177	200 LBS	200K LBS
3176	100K LBS	150K LBS
MODEL NO.	CAPACITY	OVERLOAD CAPACITY

REV.	PART NO.	DESCRIPTION	REV.
Lebow Products		Lebow Products Troy, Michigan	
UNLESS OTHERWISE SPECIFIED LINEAR DIMENSIONS ARE IN INCHES REMOVE ALL BURRS & SHARP EDGES SURFACE FINISH L25 ✓ ANGULAR DIMENSIONS ARE IN DEGREES DIMENSION LIMITS: WELD AFTER PLATING			
TOLERANCES		DR BY: TMW	DATE: 12/16/87
DRILLED HOLES ±.005	TWO PLACE DECIMALS ±.005	THREE PLACE DECIMALS ±.001	ANGLES ± 0.25°
SCALE: NONE	REF: DIM: D-31498	FRACTIONAL DECIMALS ±.001	DATE: 3176/3177
DATE: 12/16/87	APPV: M.J.M.	FR: 3176/3177	DATE: 3176/3177
CHK: M.J.M.	EDN NO.	TITLE: D.D. LOAD CELL	DRAWING NO: D-31501
REV. 1	SYM.		REV.