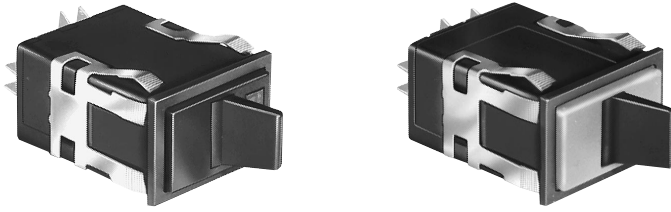


# Manual Switches

## Power Duty Paddle

### INCANDESCENT, NEON, OR NON-LIGHTED DISPLAY



Colored housing covers ordered separately.

Electrical Data	page 19
Paddle Covers	page 47
Lamps	page 58
Mounting Dimensions	page 60

#### FEATURES

- Toggle type paddle operators permanently installed in rectangular housings.
- 2-position maintained action.
- AML33 lamp circuit independent of switch circuit.
- UL recognized, CSA certified.



\*AML33 Series: 2-pole only.  
\*AML35 Series: 1-pole and 2-pole.

#### CONTACT ARRANGEMENT

1 or 2 poles: Form A



#### AML33 ORDER GUIDE

AML33 accepts one incandescent lamp which can be furnished installed or ordered separately.

AML33 E	B	A	4	AA	01
<b>Housing Type</b>	<b>Operator/Bezel Color</b>	<b>Incandescent Lamp Type</b>	<b>Terminal Type</b>	<b>Circuitry Codes</b>	<b>Operating Action</b>
<b>AML33 E</b> Rectangular Non-Lighted  <b>AML33 F</b> Rectangular 1 Lamp Ckt.	<b>B</b> Black/Black  	<b>A</b> No Lamp Installed  <b>B</b> 6 V Lamp*  <b>C</b> 14 V Lamp*  <b>E</b> 28 V Lamp*	<b>4</b> .187 × .020 (Solder or Quick-Connect)	<b>Silver Contacts:</b> <b>AA</b> 1-Pole (One Form A Single-throw, Normally-Open)  <b>AC</b> 2-Pole (Two Form A)	 <b>01</b> Maint. ON    Maint. OFF

\* Lamps will be installed per each lamp circuit specified in the Housing Type.

#### AML35 ORDER GUIDE

AML35 has neon lamp wired to 125 or 250 VAC resistor.

AML35 F	B	B	4	AA	01
<b>Housing Type</b>	<b>Operator/Bezel Color</b>	<b>Neon Lamp Voltage</b>	<b>Terminal Type/Lamp Circuit †</b>	<b>Circuitry Codes</b>	<b>Operating Action</b>
<b>AML35 F</b> Rectangular 1 Neon Lamp	<b>B</b> Black/Black  	<b>Red B</b> 125 VAC  <b>C</b> 250 VAC  <b>Green M</b> 125 VAC  <b>P</b> 250 VAC	<b>4</b> .187 × .020 (Solder or Quick-Connect) With Isolated Lamp Circuit  <b>7</b> .187 × .020 With Integral Lamp Circuit (Available with 2-Pole devices only)	<b>Silver Contacts:</b> <b>AA</b> (One Form A Single-Throw) Available only with isolated lamp circuit, term. type 4.  <b>AC</b> 2-Pole (Two Form A)	 <b>01</b> Maint. ON    Maint. OFF

† The "MICRO SWITCH" identification is shown on this side of the switch housing.

Example: **AML35FBB4AA01**

Rectangular paddle switch housing; black paddle and bezel; 125 VAC neon lamp; .187 × .020 terminals with isolated

lamp circuit; 1-Pole Form A Single-Throw; with circuit ON in one extreme position and OFF in the other (maintained).