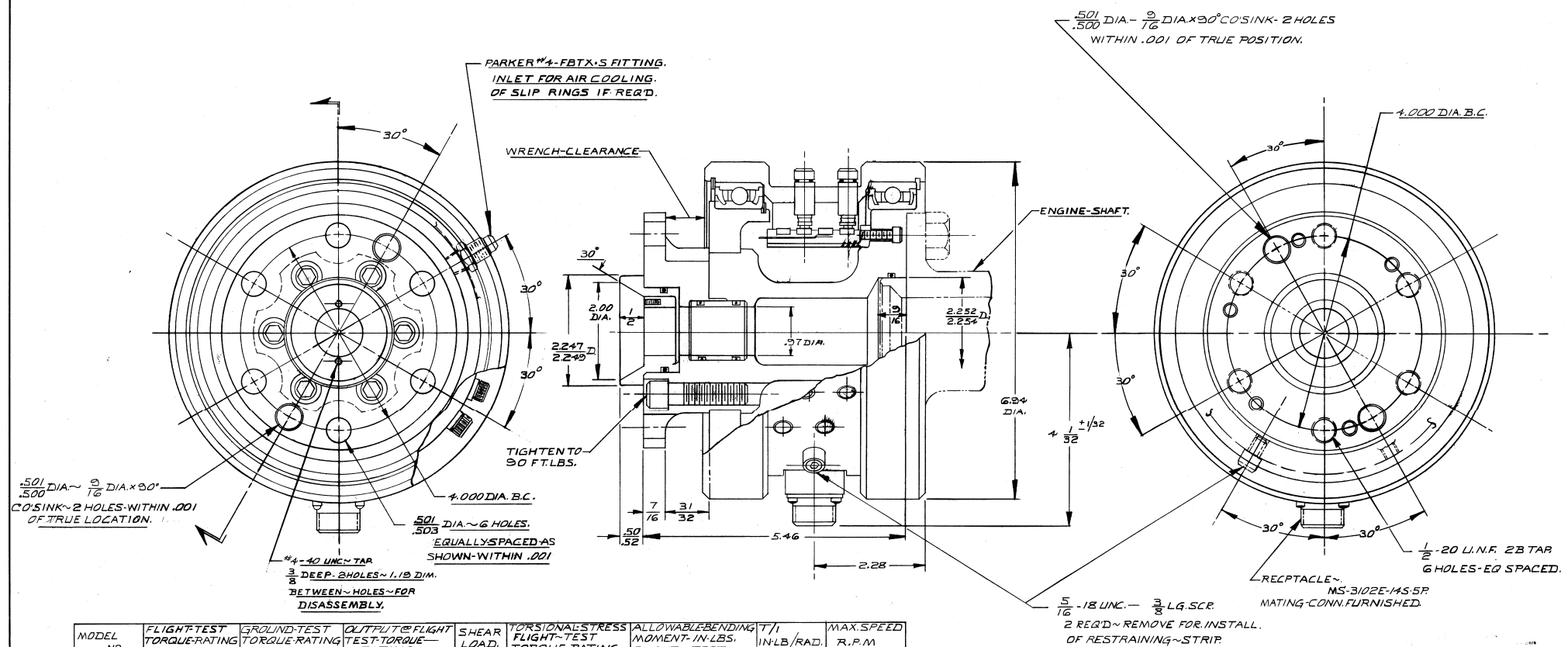


SCHEMATIC
JUN 21 1950



$\frac{.501}{.500}$ DIA. $\sim \frac{3}{16}$ DIA. $\times 90^\circ$
CO. SINK \sim 2 HOLES WITHIN $.001$
OF TRUE LOCATION.

$\frac{3}{8}$ DEEP. 2 HOLES ~ 1.19 DIM.
BETWEEN HOLES \sim FOR
DISASSEMBLY.

$\frac{.501}{.503}$ DIA. \sim 6 HOLES
EQUALLY SPACED AS
SHOWN WITHIN $.001$

$\frac{.501}{.500}$ DIA. $\sim \frac{3}{16}$ DIA. $\times 90^\circ$ CO. SINK - 2 HOLES
WITHIN $.001$ OF TRUE POSITION.

$\frac{5}{16}$ \sim 18 UNC. $\sim \frac{3}{8}$ LG. SCR.
2 REQ. \sim REMOVE FOR INSTALL.
OF RESTRAINING \sim STRIP.

MODEL NO	FLIGHT TEST TORQUE-RATING IN. LBS.	GROUND TEST TORQUE-RATING IN. LBS.	OUTPUT @ FLIGHT TEST-TORQUE-RATING	SHEAR LOAD.	TORSIONAL STRESS FLIGHT-TEST TORQUE-RATING	ALLOWABLE BENDING MOMENT IN. LBS. FLIGHT-TEST	T/TI IN. LB./RAD.	MAX. SPEED R.P.M.
1308-10K	10,000	15,000	1.0 MV/V	3,000	12,000	11,500	3.54×10^6	3500
1308-13K	13,000	20,000	1.0 MV/V	4,000	12,000	14,500	4.10×10^6	3500
1308-16K	16,000	24,000	1.0 MV/V	4,500	12,000	16,000	4.43×10^6	3500
1308-20K	20,000	30,000	1.0 MV/V	5,000	12,000	18,000	4.74×10^6	3500

© FLIGHT TESTED

DET. NO	PART NO	DESCRIPTION	REQ'D
<p>CLIPSIDE-DIMENSIONS OF PROP. SHAFT-TORQUE PICK UP. FULL DICK 270000</p>			
DATE	CHK'D BY	NO.	REV.
5/13/50		1308	
<p>UNLESS OTHERWISE SPECIFIED:</p>		<p>TOLERANCE ON DRILLED HOLES $\pm .005$</p>	
<p>TOLERANCE ON FRACTIONS $\pm .184$</p>		<p>REMOVE ALL BURRS & SHARP EDGES</p>	
<p>TWO PLACE DECIMALS 1.000</p>		<p>DIMENSION LIMITS HELD AFTER PLATING</p>	
<p>THREE PLACE DECIMALS 1.000</p>		<p>ANGLER 1.000</p>	
<p>SYN. REDRAYN HAS 7/1/50</p>		<p>LEBOW ASSOCIATES, INC. TROY, MICHIGAN</p>	
REV.	REVISION	DATE	DRAWING NO.
			D-1308-D